

Description: 0605 2.4G&5GHz Coupler

PART NUMBER: CPL0605AT13R2455A

Features:

- Compact size : 0.65x0.5x0.38mm
- RoHS compliant

Applications:

- WLAN,802.11a/b/g
- Dual Band 2.4/5 GHz

ELECTRICAL SPECIFICATIONS

DESCRIPTION	Value	
Pass Band	2400-2500 MHz	4900-5950 MHz
Impedance	50Ω	
Insertion Loss (dB)	0.55 dB (Max.) at 25°C	0.55 dB (Max.) at 25°C
V.S.W.R	1.5 (Max)	1.5 (Max)
Coupling (dB)	17 ~ 21	10.5 ~ 14.5
Directivity (dB)	13 (Min)	13 (Min)
Operating Temperature	-40 ~ +85°C	

In the effort to improve our products, we reserve the right to make changes judged to be necessary.

CONFIDENTIAL AND PROPRIETARY INFORMATION

This document contains confidential and proprietary information of Pulse Electronics, Inc. (Pulse) and is protected by copyright, trade secret and other state and federal laws. Its receipt or possession does not convey any rights to reproduce, disclose its contents, or to manufacture, use or sell anything it may describe. Reproduction, disclosure or use without specific written authorization of Pulse is strictly forbidden.

For more information:



Pulse Worldwide Headquarters
15255 Innovation Drive #100
San Diego, CA 92128
USA
Tel:1-858-674-8100

Pulse/Larsen Antennas
18110 SE 34th St Bldg 2 Suite 250
Vancouver, WA 98683
USA
Tel: 1-360-944-7551

Europe Headquarters
Pulse GmbH & Do, KG
Zeppelinstrasse 15
Herrenberg, Germany

Pulse (Suzhou) Wireless Products Co, Inc.
99 Huo Ju Road(#29 Bldg,4th Phase
Suzhou New District
Jiangsu Province, Suzhou 215009 PR China
Tel: 86 512 6807 9998

Description: 0605 2.4G&5GHz Coupler

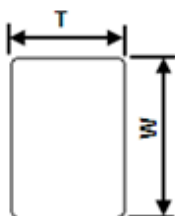
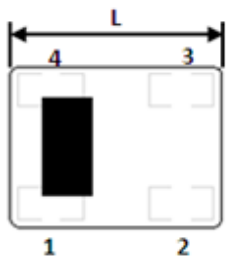
PART NUMBER: CPL0605AT13R2455A

MECHANICAL DIMENSION

Outline

Termination

Mechanical



Terminal name

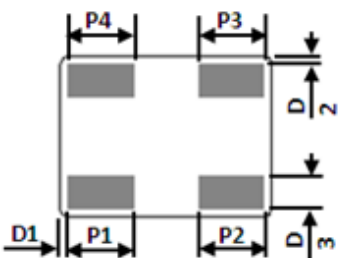
function

Dimension

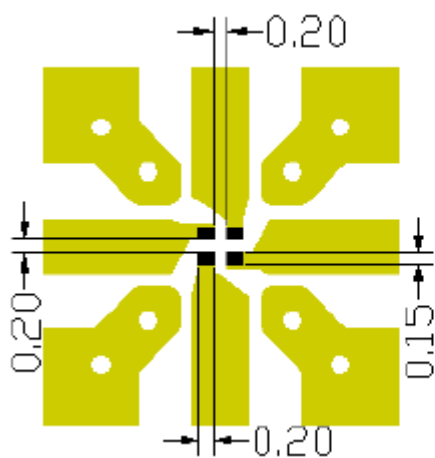
- (1)
- (2)
- (3)
- (4)

- Coupling
- 50 ohm terminal
- Output
- Input

Dimension	Value
L (mm)	0.65±0.05
W (mm)	0.50±0.05
T (mm)	0.38±0.05
P1 (mm)	0.20±0.05
P2 (mm)	0.20±0.05
P3 (mm)	0.20±0.05
P4 (mm)	0.20±0.05
D1 (mm)	0.025±0.025
D2 (mm)	0.025±0.025
D3 (mm)	0.10±0.05



Reference design of EVB



Solder Resist

Land

Via Diameter=0.3
(unit mm)

Line width should be designed to match 50Ω characteristic impedance, depending on PCB material and thickness.

In the effort to improve our products, we reserve the right to make changes judged to be necessary.

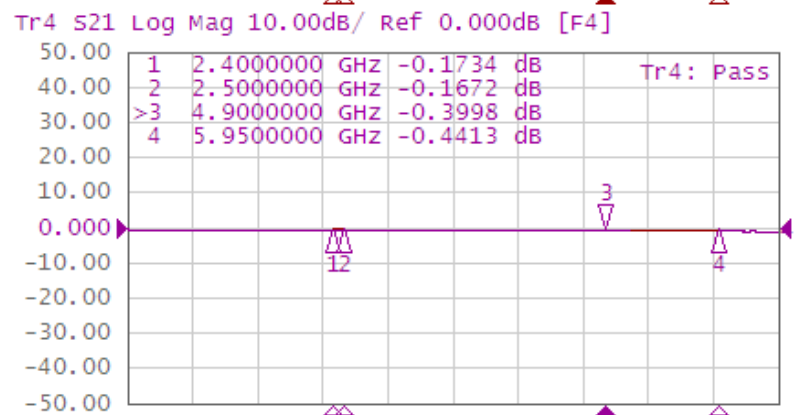
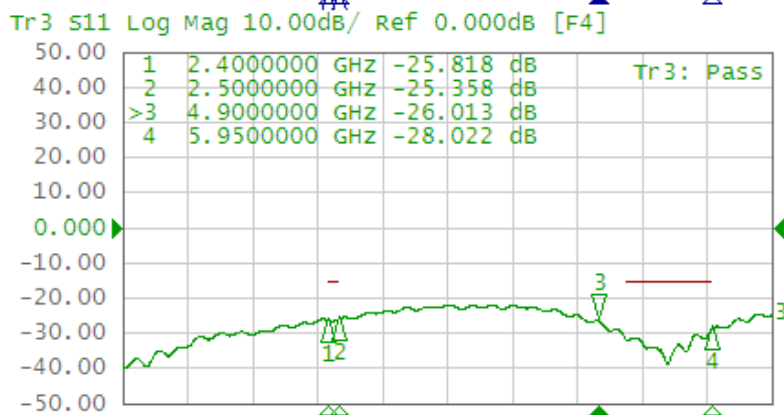
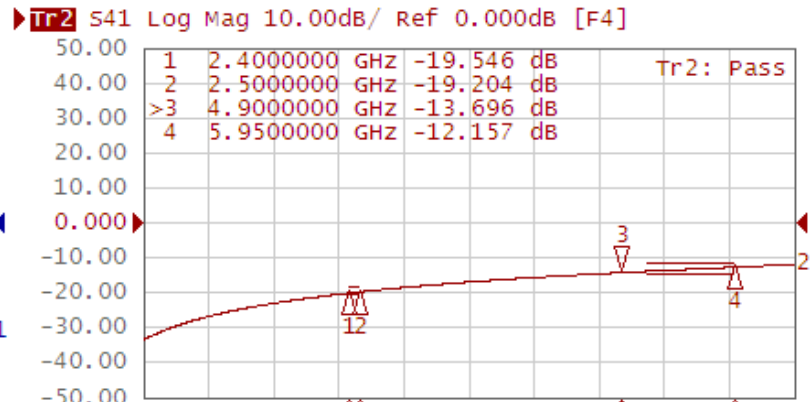
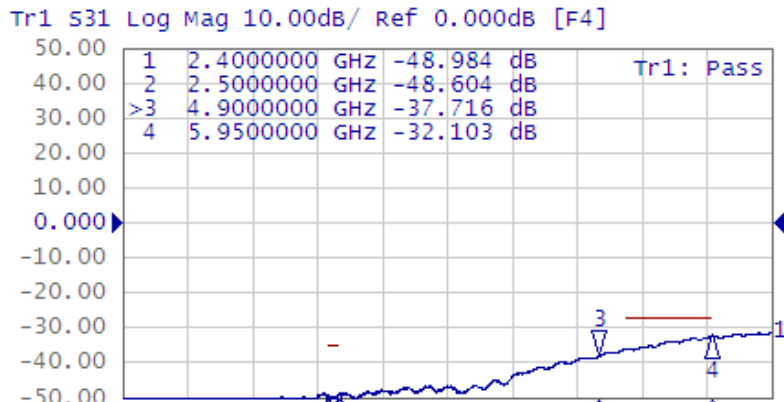
CONFIDENTIAL AND PROPRIETARY INFORMATION

This document contains confidential and proprietary information of Pulse Electronics, Inc. (Pulse) and is protected by copyright, trade secret and other state and federal laws. Its receipt or possession does not convey any rights to reproduce, disclose its contents, or to manufacture, use or sell anything it may describe. Reproduction, disclosure or use without specific written authorization of Pulse is strictly forbidden.

Description: 0605 2.4G&5GHz Coupler

PART NUMBER: CPL0605AT13R2455A

ELECTRICAL PERFORMANCES



- Measured on Agilent E5071C Network Analyzer
- Input port: Port 1 (Return loss: S11)
- Output port: Port 2 (Insertion loss: S21)
- Coupling port: Port 4 (Coupling: S41)
- 50 ohm terminal port: Port 3 (Isolation: S31)

Frequency Characteristics

Description: 0605 2.4G&5GHz Coupler

PART NUMBER: CPL0605AT13R2455A

REVISION HISTORY

Revision	Date	Description
Version 1	Oct. 30, 2020	- New issue

单击下面可查看定价，库存，交付和生命周期等信息

[>>Pulse\(普思\)](#)