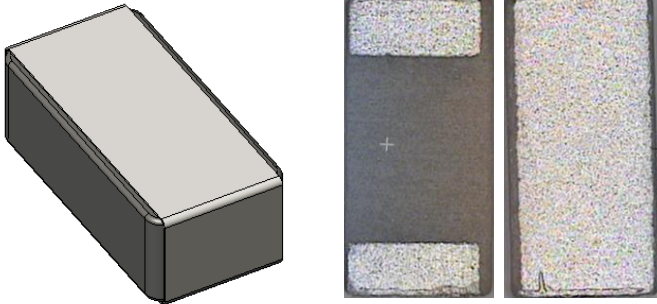


## Description: Ceramic Dual Band WLAN

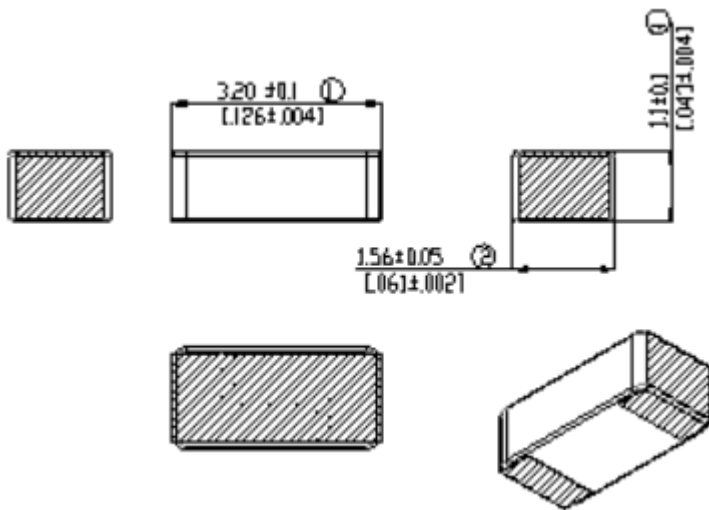
Series: Antenna

PART NUMBER: W3079



### Features:

- High efficiency and high peak gain
- Low Profile
- Compact size (3.2x1.56x1.1mm)
- SMD compatible



### Applications:

- IEEE 802.11 a/b/g
- Bluetooth, Zigbee
- 2.4GHz and 5GHz WLAN
- 2.4GHz and 5GHz ISM band

All dimensions are in mm / inches

Issue: 2049

In the effort to improve our products, we reserve the right to make changes judged to be necessary.

CONFIDENTIAL AND PROPRIETARY INFORMATION

This document contains confidential and proprietary information of Pulse Electronics, Inc. (Pulse) and is protected by copyright, trade secret and other state and federal laws. Its receipt or possession does not convey any rights to reproduce, disclose its contents, or to manufacture, use or sell anything it may describe. Reproduction, disclosure or use without specific written authorization of Pulse is strictly forbidden.

For more information:

Pulse Worldwide Headquarters  
12220 World Trade Drive  
San Diego, CA 92128  
USA  
Tel: 1-858-674-8100

Pulse/Larsen Antennas  
3611 NE 112<sup>th</sup> Ave  
Vancouver, WA 98682  
USA  
Tel: 1-360-944-7551

Europe Headquarters  
Pulse GmbH & Do, KG  
Zeppelinstrasse 15  
Herrenberg, Germany

Pulse (Suzhou) Wireless Products Co, Inc.  
99 Huo Ju Road(#29 Bldg,4<sup>th</sup> Phase  
Suzhou New District  
Jiangsu Province, Suzhou 215009 PR China  
Tel: 86 512 6807 9998

Description: Ceramic Dual Band WLAN

Series: Antenna

PART NUMBER: W3079

## ELECTRICAL SPECIFICATIONS

Frequency	2.4–2.4835 / 5.15–5.85 GHz
Nominal Impedance	50 Ω
VSWR	< 1.9 / < 2.5
Gain (peak)	2.4 / 5.7 dBi +/- 1 dB
Total efficiency (peak)	70 / 77 %
Ground clearance area under antenna	6.0 x 11.00mm

## MECHANICAL SPECIFICATIONS

Weight	0,033 g
Overall Dimensions (L*W*H)	3.2*1.56*1.1 mm

## ENVIRONMENTAL SPECIFICATIONS

Operating temperature	-40-+85 ° C
MSL	Level 1

Issue: 2049

In the effort to improve our products, we reserve the right to make changes judged to be necessary.

CONFIDENTIAL AND PROPRIETARY INFORMATION

This document contains confidential and proprietary information of Pulse Electronics, Inc. (Pulse) and is protected by copyright, trade secret and other state and federal laws. Its receipt or possession does not convey any rights to reproduce, disclose its contents, or to manufacture, use or sell anything it may describe. Reproduction, disclosure or use without specific written authorization of Pulse is strictly forbidden.

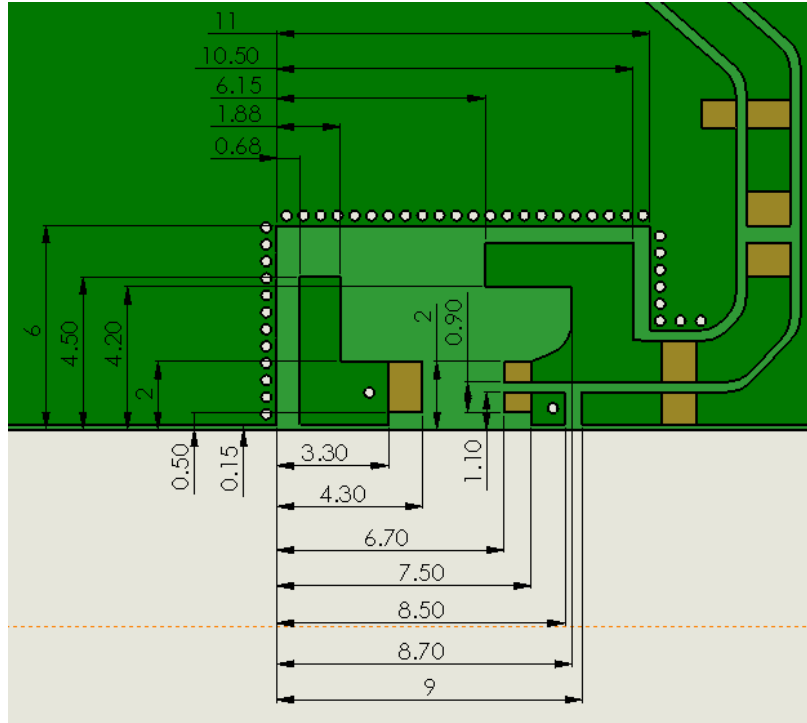
Downloaded From [Oneyac.com](https://www.oneyac.com)



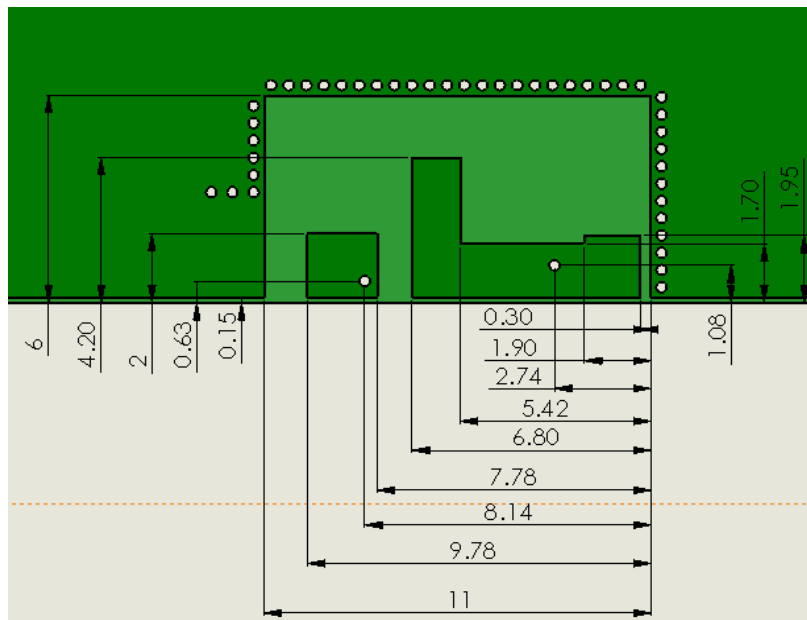


OTHER SPECIFICATIONS

Top side



Bottom side



Issue: 2049

In the effort to improve our products, we reserve the right to make changes judged to be necessary.

CONFIDENTIAL AND PROPRIETARY INFORMATION

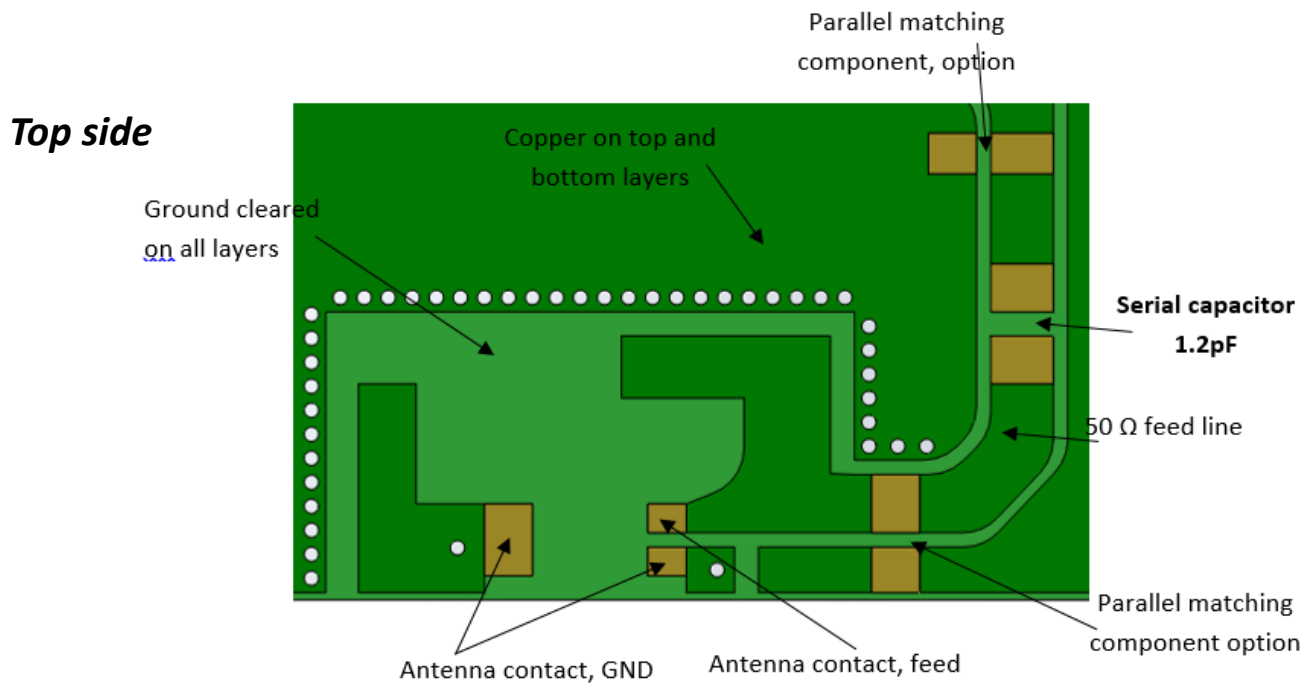
This document contains confidential and proprietary information of Pulse Electronics, Inc. (Pulse) and is protected by copyright, trade secret and other state and federal laws. Its receipt or possession does not convey any rights to reproduce, disclose its contents, or to manufacture, use or sell anything it may describe. Reproduction, disclosure or use without specific written authorization of Pulse is strictly forbidden.

## Description: Ceramic Dual Band WLAN

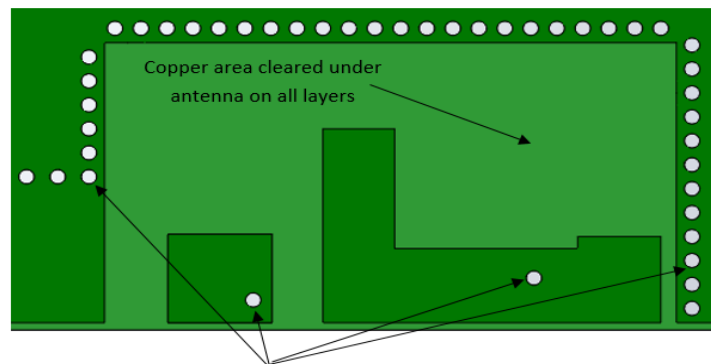
Series: Antenna

PART NUMBER: W3079

### OTHER SPECIFICATIONS



**Bottom side**



Via holes connecting top and bottom layer copper

Issue: 2049

In the effort to improve our products, we reserve the right to make changes judged to be necessary.

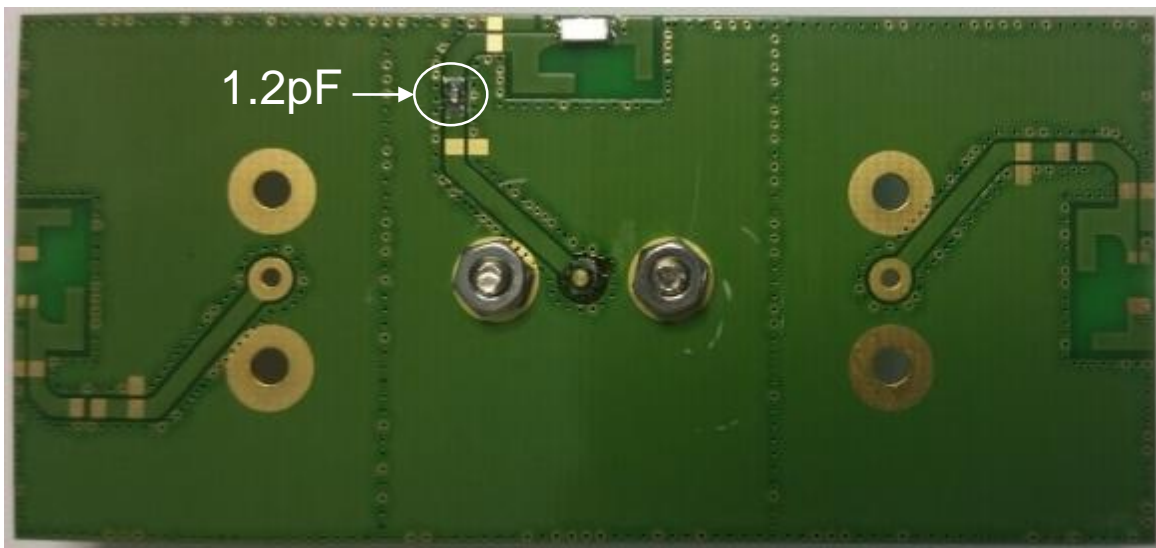
CONFIDENTIAL AND PROPRIETARY INFORMATION

This document contains confidential and proprietary information of Pulse Electronics, Inc. (Pulse) and is protected by copyright, trade secret and other state and federal laws. Its receipt or possession does not convey any rights to reproduce, disclose its contents, or to manufacture, use or sell anything it may describe. Reproduction, disclosure or use without specific written authorization of Pulse is strictly forbidden.

Downloaded From [Oneyac.com](http://Oneyac.com)

**Description: Ceramic Dual Band WLAN****Series: Antenna****PART NUMBER: W3079****Recommended Antenna Position on PCB**

- The recommended antenna location is the center edge of the longer PCB side.
- All measurement results of W3079 are measured on the 37x80mm evaluation board with matching circuit (series 1.2pF capacitor).
- To construct a fine matching on customer PCB design, proper impedance matching values should be obtained with a final customer PCB dimension, surrounded metallic components, and a package condition (with final assembly condition).
- The recommended minimum PCB size is around 35x35mm to obtain similar RF performances of datasheet. For more discussion, please contact to Pulse electronics.



Issue: 2049

In the effort to improve our products, we reserve the right to make changes judged to be necessary.

CONFIDENTIAL AND PROPRIETARY INFORMATION

This document contains confidential and proprietary information of Pulse Electronics, Inc. (Pulse) and is protected by copyright, trade secret and other state and federal laws. Its receipt or possession does not convey any rights to reproduce, disclose its contents, or to manufacture, use or sell anything it may describe. Reproduction, disclosure or use without specific written authorization of Pulse is strictly forbidden.

Downloaded From [Oneyac.com](https://www.oneyac.com)

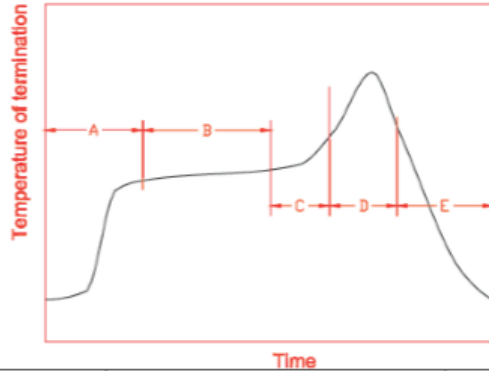
Description: Ceramic Dual Band WLAN

Series: Antenna

PART NUMBER: W3079

OTHER SPECIFICATIONS

Recommended reflow soldering



A	1 <sup>st</sup> rising temperature	The normal to Preheating temperature	30s to 60s
B	Preheating	140°C to 160°C	60s to 120s
C	2 <sup>nd</sup> rising temperature	Preheating to 200°C	20s to 40s
D	Main heating	if 220°C	50s~60s
		if 230°C	40s~50s
		if 240°C	30s~40s
		if 250°C	20s~40s
E	Regular cooling	if 260°C	20s~40s
		200°C to 100°C	1°C/s ~ 4°C/s

\*reference: J-STD-020C

(1) Soldering gun procedure

Note the follows, in case of using solder gun for replacement.

(a) The tip temperature must be less than 350°C for the period within 3 seconds by using soldering gun under 30 W.

(b) The soldering gun tip shall not touch this product directly.

(2) Soldering volume

Note that excess of soldering volume will easily get crack the body of this product.



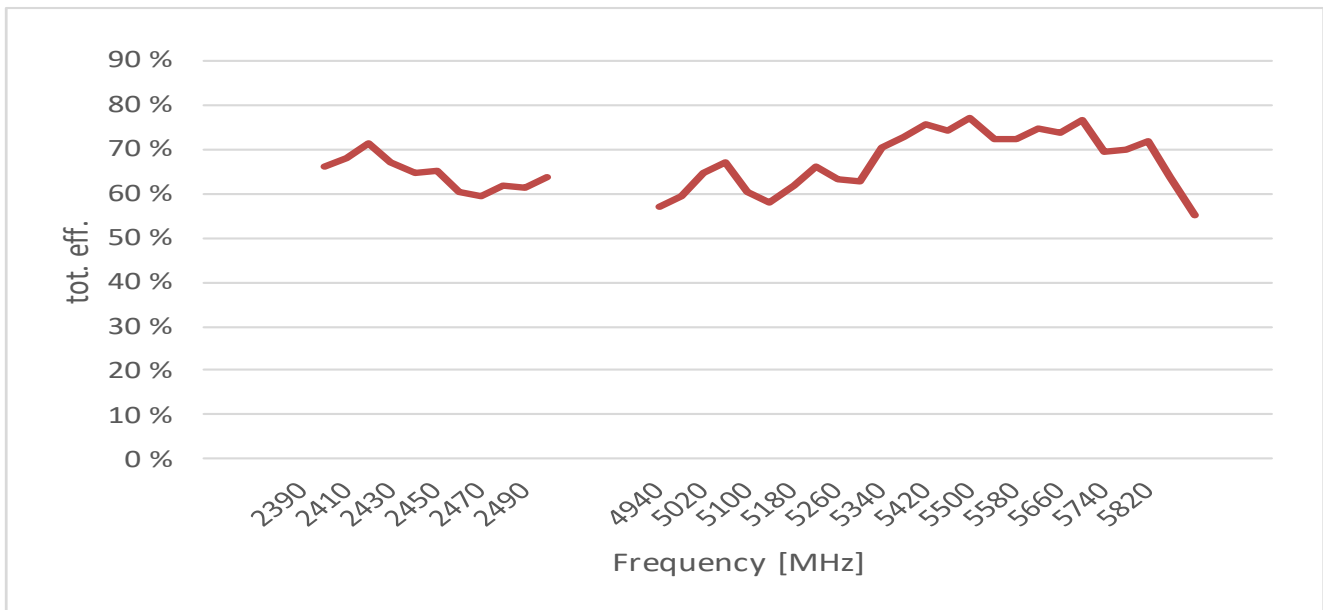
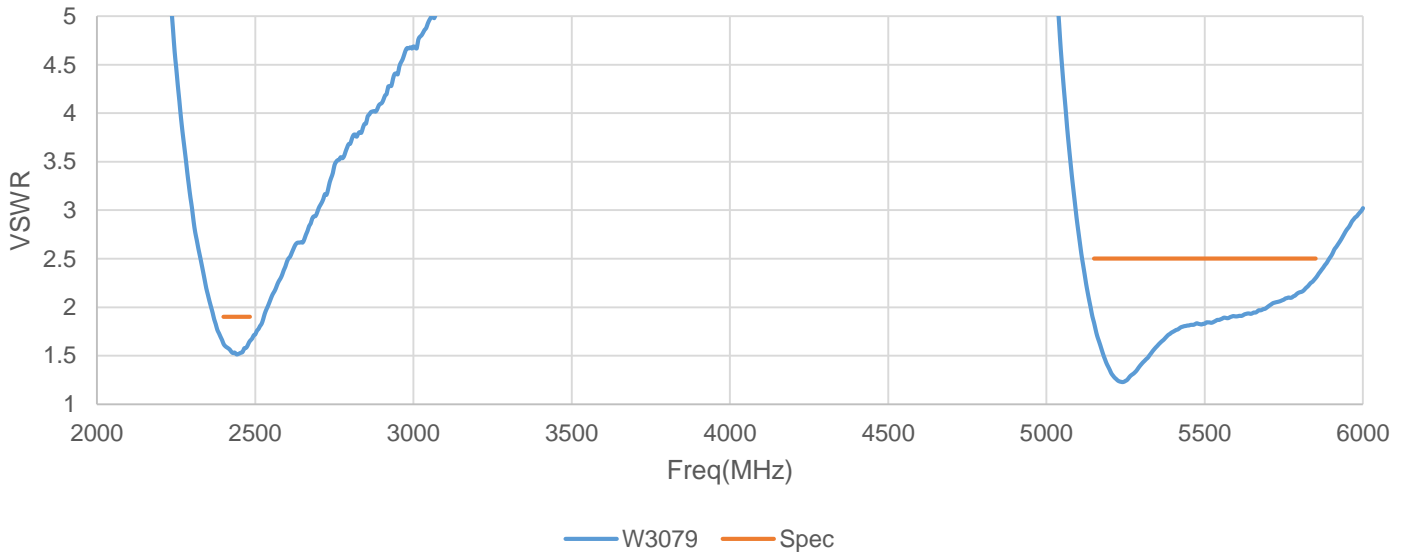
## Description: Ceramic Dual Band WLAN

Series: Antenna

PART NUMBER: W3079

### CHARTS

W3079\*



\* Free space measurements on Pulse reference test PCB

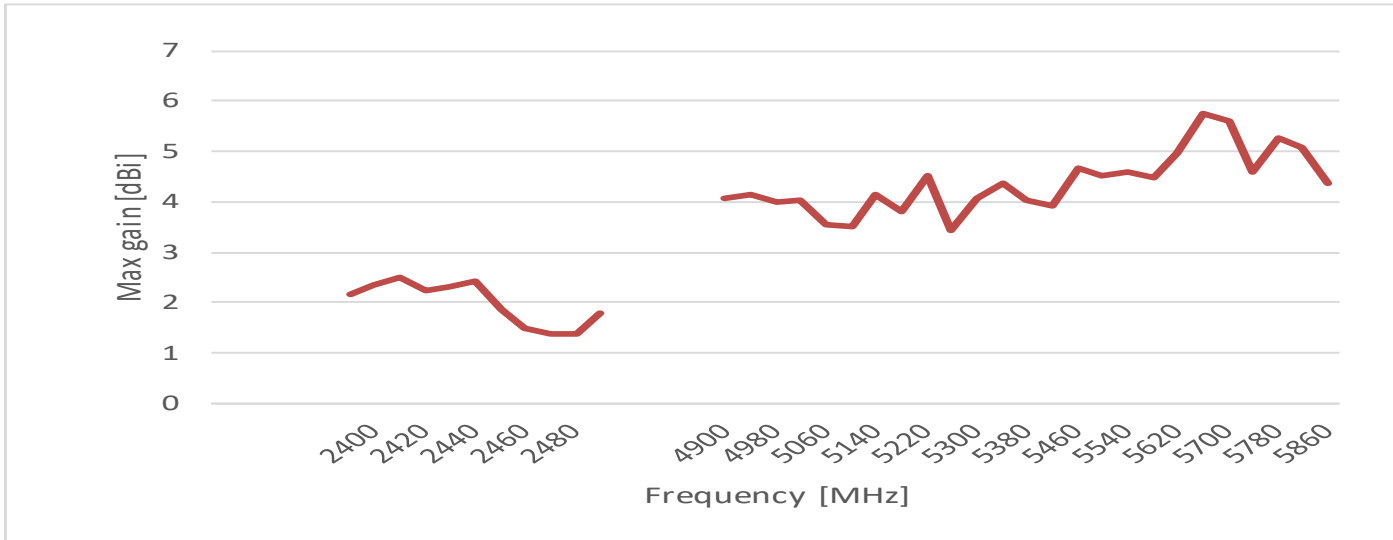
Issue: 2049

In the effort to improve our products, we reserve the right to make changes judged to be necessary.

CONFIDENTIAL AND PROPRIETARY INFORMATION

This document contains confidential and proprietary information of Pulse Electronics, Inc. (Pulse) and is protected by copyright, trade secret and other state and federal laws. Its receipt or possession does not convey any rights to reproduce, disclose its contents, or to manufacture, use or sell anything it may describe. Reproduction, disclosure or use without specific written authorization of Pulse is strictly forbidden.



**Description: Ceramic Dual Band WLAN****Series: Antenna****PART NUMBER: W3079****CHARTS****\* Free space measurements on Pulse reference test PCB**

Issue: 2049

In the effort to improve our products, we reserve the right to make changes judged to be necessary.

CONFIDENTIAL AND PROPRIETARY INFORMATION

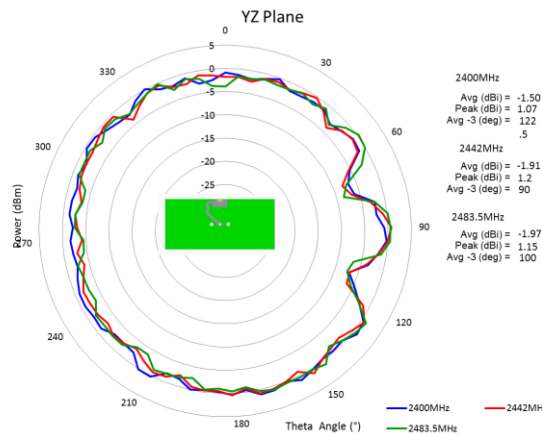
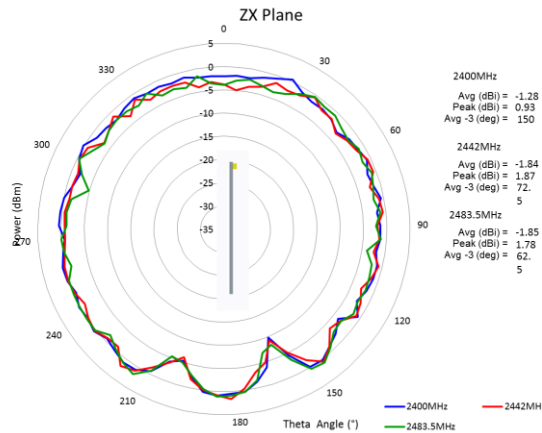
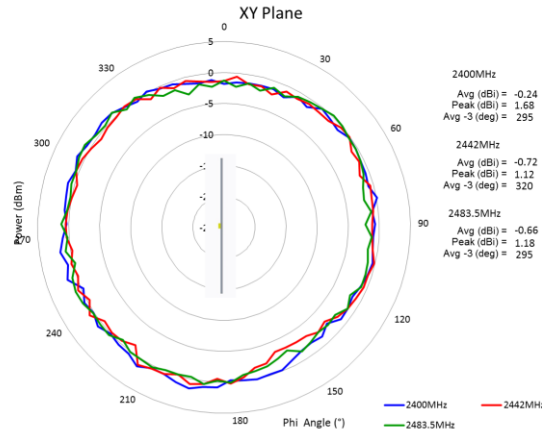
This document contains confidential and proprietary information of Pulse Electronics, Inc. (Pulse) and is protected by copyright, trade secret and other state and federal laws. Its receipt or possession does not convey any rights to reproduce, disclose its contents, or to manufacture, use or sell anything it may describe. Reproduction, disclosure or use without specific written authorization of Pulse is strictly forbidden.

## Description: Ceramic Dual Band WLAN

Series: Antenna

PART NUMBER: W3079

### CHARTS



\* Free space measurements on Pulse reference test PCB

Issue: 2049

In the effort to improve our products, we reserve the right to make changes judged to be necessary.

CONFIDENTIAL AND PROPRIETARY INFORMATION

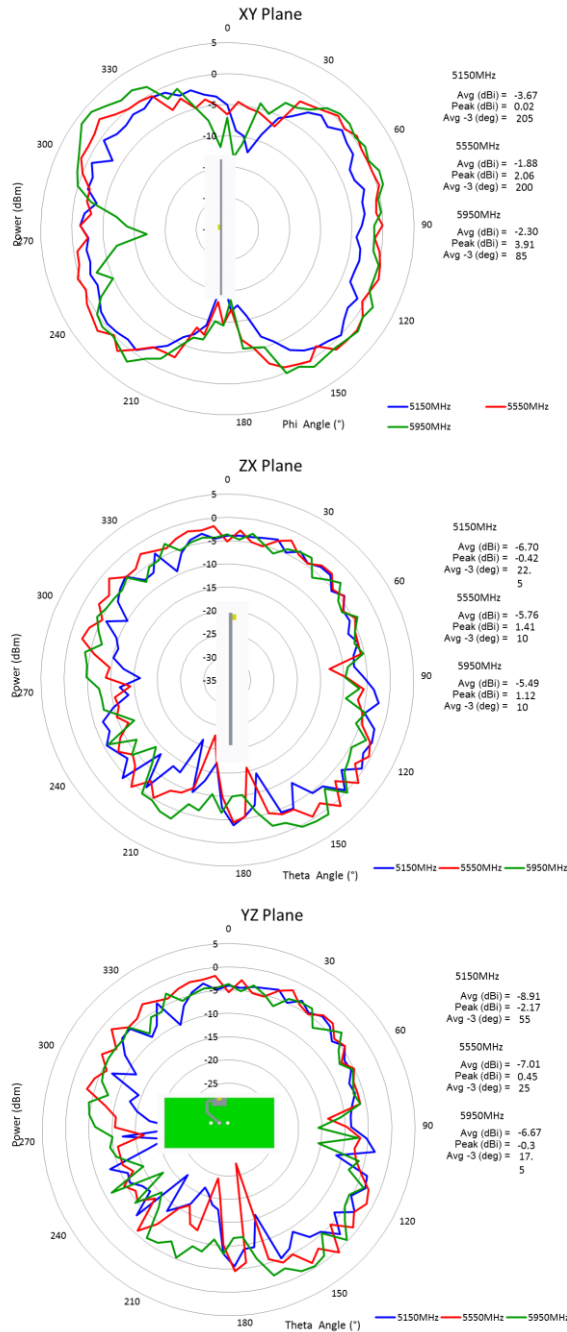
This document contains confidential and proprietary information of Pulse Electronics, Inc. (Pulse) and is protected by copyright, trade secret and other state and federal laws. Its receipt or possession does not convey any rights to reproduce, disclose its contents, or to manufacture, use or sell anything it may describe. Reproduction, disclosure or use without specific written authorization of Pulse is strictly forbidden.

## Description: Ceramic Dual Band WLAN

Series: Antenna

PART NUMBER: W3079

### CHARTS



\* Free space measurements on Pulse reference test PCB

Issue: 2049

In the effort to improve our products, we reserve the right to make changes judged to be necessary.

CONFIDENTIAL AND PROPRIETARY INFORMATION

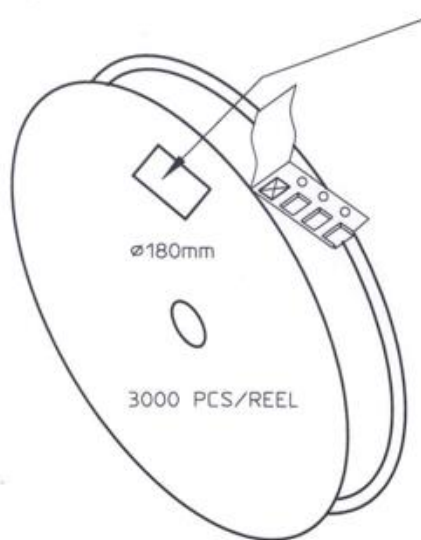
This document contains confidential and proprietary information of Pulse Electronics, Inc. (Pulse) and is protected by copyright, trade secret and other state and federal laws. Its receipt or possession does not convey any rights to reproduce, disclose its contents, or to manufacture, use or sell anything it may describe. Reproduction, disclosure or use without specific written authorization of Pulse is strictly forbidden.

## Description: Ceramic Dual Band WLAN

Series: Antenna

**PART NUMBER: W3079**

### PACKAGING



**REEL LABEL INFORMATION:**

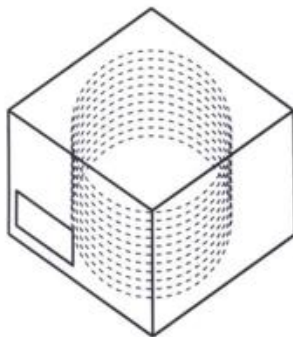
- TRACEABILITY
- QUANTITY
- PRODUCT CODE

CARRIER TAPE H85-00125  
width=8,00 depth=1,22  
COVER TAPE H85-00126  
width=5,60

**LENGTH OF TAPE:**

- Leader section: min 350 mm before component section
- Trailer section: min 40 mm after component section.

Empty part cavities at leader and trailer section of the tape must be sealed with top cover tape.



BOX H85-00128 (182x182x132)	1 pcs
- LABEL	1 pcs/BOX
REEL H85-00127 (D180, W12)	10 pcs
- REEL LABEL	1 pcs/REEL

### ASSEMBLY

Issue: 2049

In the effort to improve our products, we reserve the right to make changes judged to be necessary.

CONFIDENTIAL AND PROPRIETARY INFORMATION

This document contains confidential and proprietary information of Pulse Electronics, Inc. (Pulse) and is protected by copyright, trade secret and other state and federal laws. Its receipt or possession does not convey any rights to reproduce, disclose its contents, or to manufacture, use or sell anything it may describe. Reproduction, disclosure or use without specific written authorization of Pulse is strictly forbidden.

单击下面可查看定价，库存，交付和生命周期等信息

[>>Pulse\(普思\)](#)