

# DATA SHEET

WIRELESS COMPONENTS

Ceramic Chip Antenna

ANT5320LL24R2455A

2.4 AND 5 GHZ

5320 Series



FEATURES

- Compact size
- Omni-directional radiation
- Dual-band design
- Tape & reel automatic mounting
- Reflow process compatible
- RoHS compliant

APPLICATIONS

- 2.4 & 5 GHz WiFi device
- ISM band equipment

ORDERING INFORMATION

All part numbers are identified by the series, packing type, material, size, antenna type, working frequency and packing quantity.

**PART NUMBER**

**ANT 5320 L L24 R 2455A**  
 (1) (2) (3) (4) (5) (6)

---

**(1) PRODUCT**

ANT = Antenna

---

**(2) SIZE**

5320 = 5.3 × 2.0

---

**(3) ANTENNA TYPE**

L,F,A = Chip Antenna

---

**(4) SERIAL NO.**

L24

---

**(5) PACKING STYLE**

R = Tape and Reel

---

**(6) WORKING FREQUENCY**

2455 = 2.45/ 5 GHz

---

**PHYCOMP CTC**

CAN431175324252K

---

**I2NC**

431175324252

---

**SPECIFICATION**

Table 1

| DESCRIPTION                   | VALUE                                  |
|-------------------------------|--|
| Centre Frequency              | 2.45/ 5 GHz                            |
| Bandwidth                     | 120M / 900 MHz (min)                   |
| Return Loss                   | 10 dB min                              |
| Polarization                  | Linear                                 |
| Azimuth Beamwidth             | Omni-directional                       |
| Peak Gain                     | 2.17 / 3.51 dBi ( Typ. )               |
| Impedance                     | 50 Ω                                   |
| Operating Temperature         | -40~105 degree                         |
| Maximum Power                 | 1 W                                    |
| Termination                   | Ag (Environmentally-Friendly Leadless) |
| Resistance to Soldering Heats | 260°C , 10sec.                         |

**NOTE**

1. The specification is defined on Yageo evaluation board

**DIMENSIONS**

Table 2 Machinical Dimension

|        | DIMENSION   |
|--------|-------------|
| L (mm) | 5.30 ± 0.10 |
| W (mm) | 2.00 ± 0.10 |
| T (mm) | 1.15 ± 0.10 |
| A (mm) | 0.80 ± 0.10 |
| B (mm) | 0.80 ± 0.10 |
| C (mm) | 0.50 ± 0.10 |
| D (mm) | 2.40 ± 0.10 |

**OUTLINES**

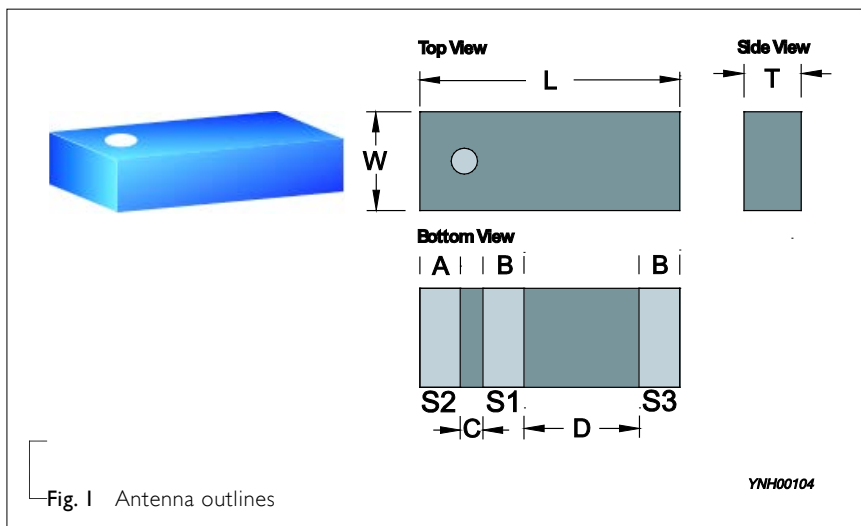


Fig. 1 Antenna outlines

YNH00104

Table 3 Termination configuration

| TERMINAL NAME | FUNCTION        |
|---------------|-----------------|
| S1            | Feeding Point   |
| S2            | Soldering Point |
| S3            | GND             |

REFERENCE DESIGN OF EVALUATION BOARD

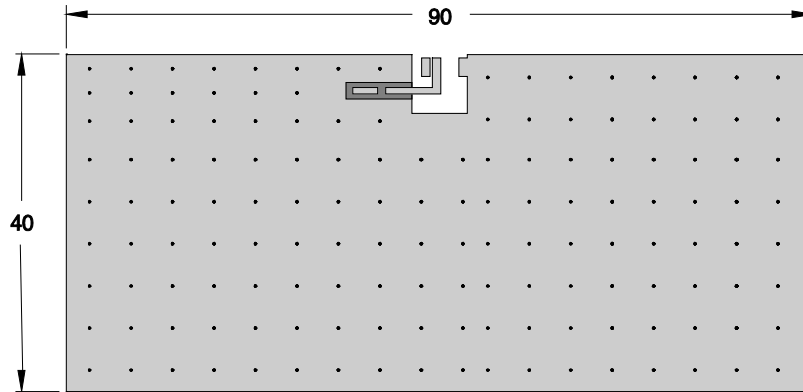
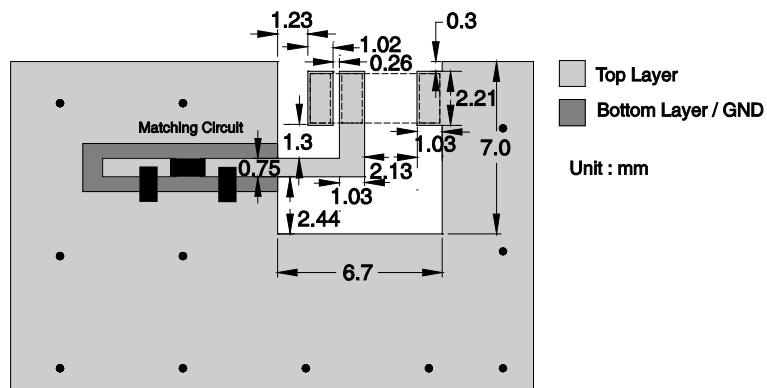


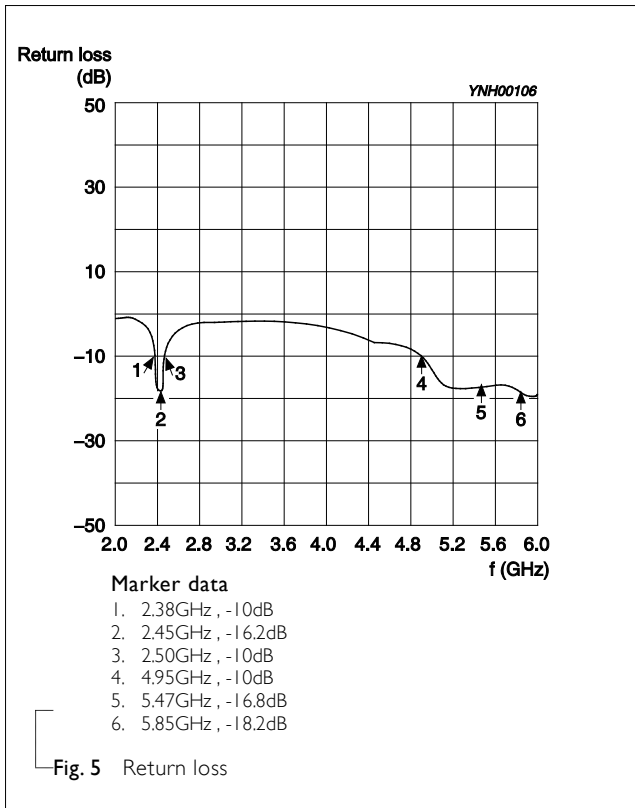
Fig. 3 Outlook and dimension of evaluation board

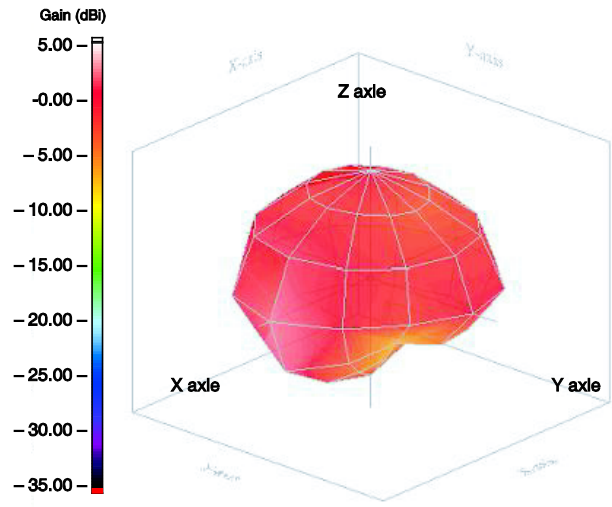
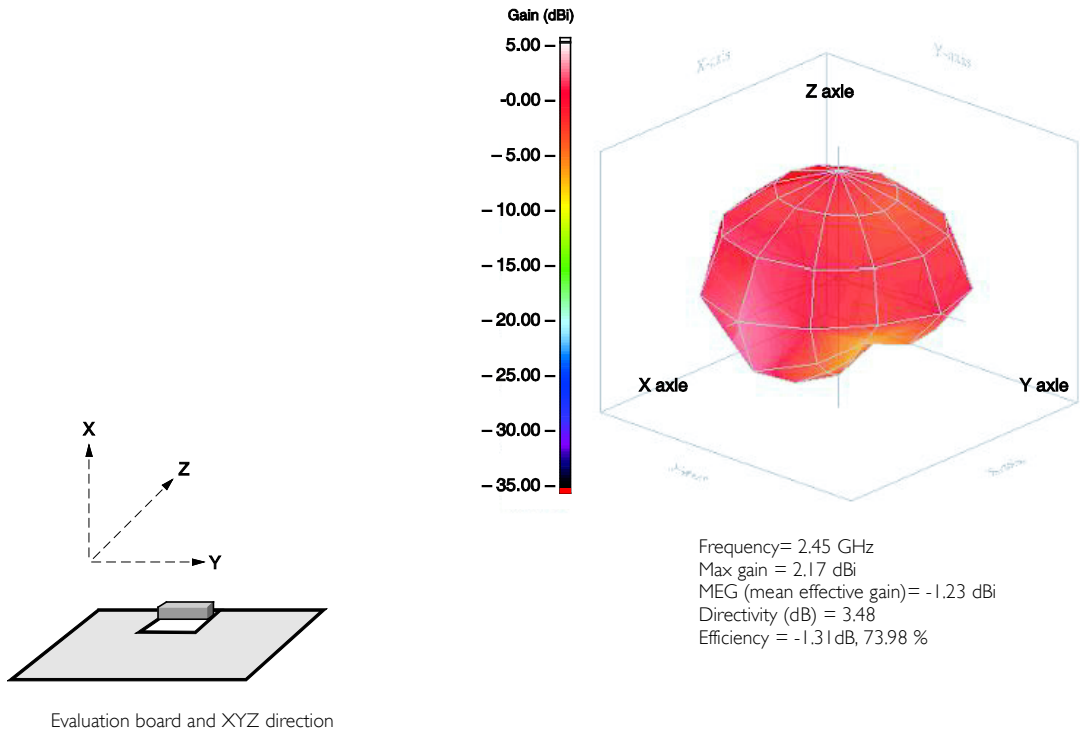


YNH00105

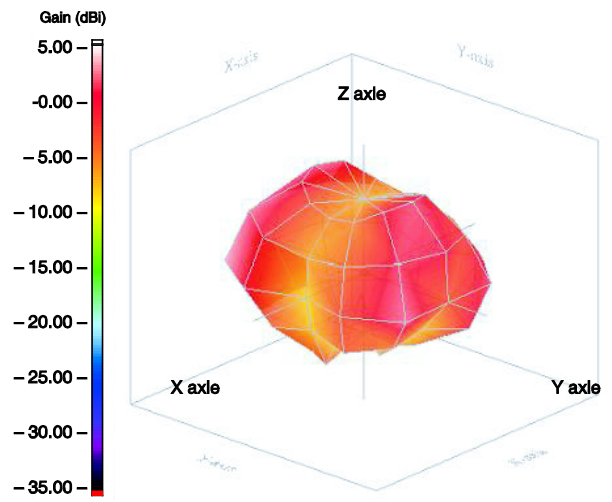
Fig. 4 Details of soldering pad

**ELECTRICAL PERFORMANCES**





Frequency= 2.45 GHz  
 Max gain = 2.17 dBi  
 MEG (mean effective gain)= -1.23 dBi  
 Directivity (dB) = 3.48  
 Efficiency = -1.31dB, 73.98 %



Frequency= 5.47 GHz  
 Max gain = 3.51 dBi  
 MEG (mean effective gain)= -2.68 dBi  
 Directivity (dB) = 4.95  
 Efficiency = -1.44dB, 71.82 %

YNH00107

Fig. 6 Radiation pattern

REVISION HISTORY

| REVISION  | DATE          | CHANGE NOTIFICATION | DESCRIPTION  |
|-----------|---------------|---------------------|--|
| Version 0 | Jan. 30, 2013 | -                   | - New data sheet for SMD type antenna, 2.4 / 5GHz application, 5320 series PIFA mode |

单击下面可查看定价，库存，交付和生命周期等信息

[>>Pulse\(普思\)](#)