



CX2041ANL

- BALUN TRANSFORMER
- IMPEDANCE = 75 OHMS
- 1:1CT TURN TATIO
- SURFACE MOUNT PACKAGE

ELECTRICAL SPECIFICATIONS: @ 25°C

INSERTION LOSS:

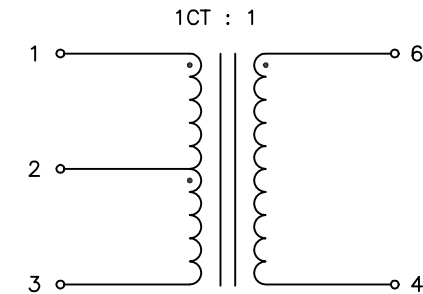
FREQUENCY	ATTENUATION(S21)
50 KHz	3.0 dB MAX
100 KHz	1.5 dB MAX
1 MHz	0.8 dB MAX
5 MHz	0.8 dB MAX
120 MHz	0.8 dB MAX
160 MHz	1.3 dB MAX
200 MHz	2.0 dB MAX
300 MHz	2.5 dB MAX
450 MHz	3.4 dB MAX

RETURN LOSS:

FREQUENCY	ATTENUATION(S11)
100 KHz	8.0 dB MIN
400 KHz	18.0 dB MIN
1 MHz	24.0 dB MIN
5 MHz	28.0 dB MIN
10 MHz	25.0 dB MIN
30 MHz	22.0 dB MIN
80 MHz	14.5 dB MIN
120 MHz	11.5 dB MIN
180 MHz	8.5 dB MIN
200 MHz	8.0 dB MIN

NOTES: UNLESS OTHERWISE SPECIFIED

- OPERATING TEMPERATURE: -40°C TO +85°C
- STORAGE TEMPERATURE: -50°C TO +125°C
- COMPLIANCE TO J-STD:
 - J-STD-002: SOLDERABILITY AT REFLOW PEAK TEMPERATURE OF 245°C
 - J-STD-020: MSL 1, NO MOISTURE SENSITIVE
 - J-STD-075: R6, 250°C MAXIMUM THROUGH REFLOW SOLDER
- DIMENSIONS ARE IN INCHES.
 - TOLERANCE:
 - .XX= ±.01
 - .XXX= ±.005
- OPTIONAL TAPE & REEL PACKAGING CAN BE ORDERED BY ADDING A "T" SUFFIX TO THE PART NUMBER. ie: CX2041ANLT



SCHEMATIC

© Copyright, 2014. Pulse Electronics Corp. All rights reserved. Pulse confidential & proprietary. (06/19/2014)

PRODUCT DESCRIPTION:

XFMR, RF, SGL, RAC, 1:1CT, .05-450M, CAP

SHEET:

1 OF 2

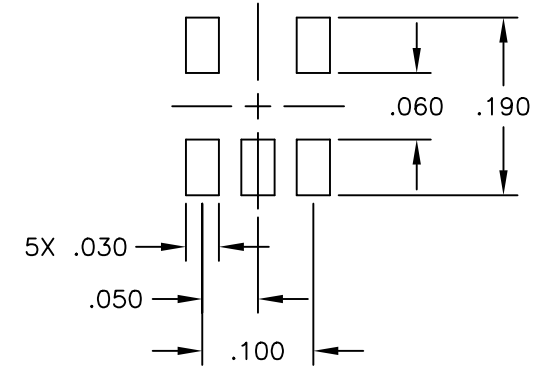
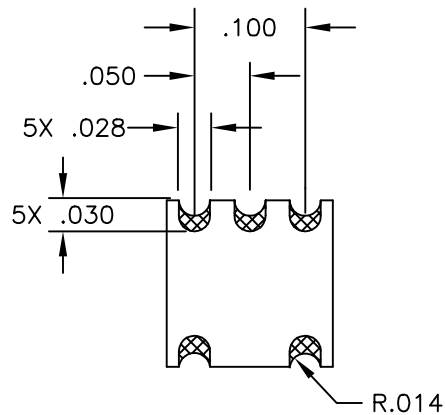
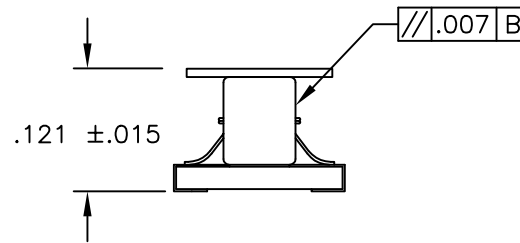
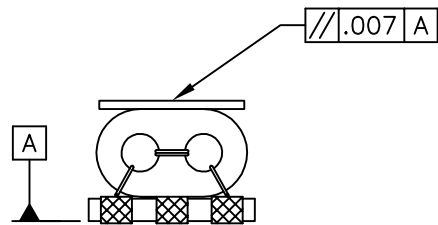
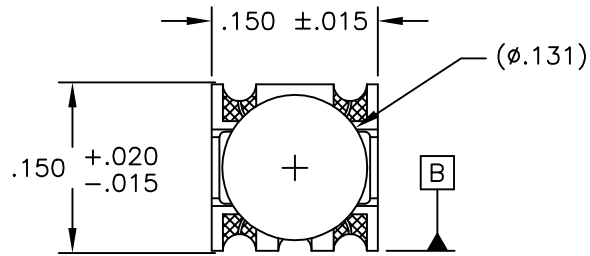
PART NO.

CX2041ANL

DATASHEET REV.

A

MECHANICAL SPECIFICATIONS:



SUGGESTED LAND PATTERN

© Copyright, 2014. Pulse Electronics Corp. All rights reserved. Pulse confidential & proprietary. (06/19/2014)

PRODUCT DESCRIPTION:

XFMR, RF, SGL, RAC, 1:1CT, .05-450M, CAP

SHEET:

2 OF 2

PART NO.

CX2041ANL

DATASHEET REV.

A

单击下面可查看定价，库存，交付和生命周期等信息

[>>Pulse\(普思\)](#)