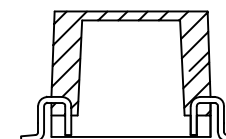
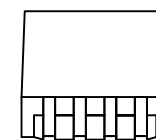


NOTES:

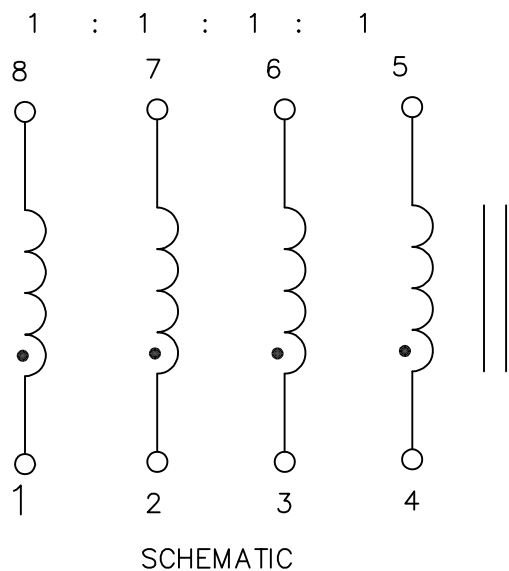
1. ROHS COMPLIANT
2. PLASTIC: THERMOSET PLASTIC MATERIAL WITH FLAMMABILITY RATING UL 94V-0 OR BETTER.
3. STORAGE TEMPERATURE: -20°C TO +125°C
4. COMPLIANCE TO J-STD:
 - A. J-STD-002: SOLDERABILITY AT 245°C REFLOW PROFILE
 - B. J-STD-020: LEVEL 1, NO MOISTURE SENSITIVE
 - C. J-STD-075: R7, 245°C MAXIMUM THROUGH REFLOW SOLDER
5. TO ORDER TAPE & REEL PACKAGING ADD A "T" SUFFIX TO THE PART NUMBER(i.e 23Z104SMNL BECOMES 23Z104SMNLT).



FINAL OUTLINE

© Copyright, 2017. Pulse Electronics Corp. All rights reserved. Pulse confidential & proprietary. (03/03/17)

PRODUCT DESCRIPTION	TLA DRAWING	PS DRAWING	SHEET	PART NO.	DATASHEET REV.
CHK,SIN,10D,1:1,SM,TU	23Z104SMNL-13	PS-2420.001-A	1 OF 3	23Z104SMNL	A

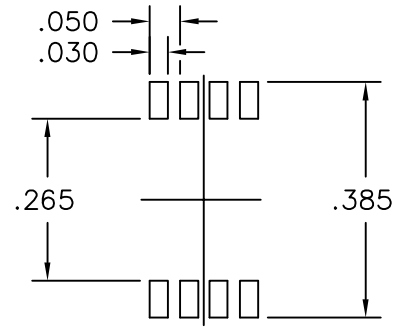
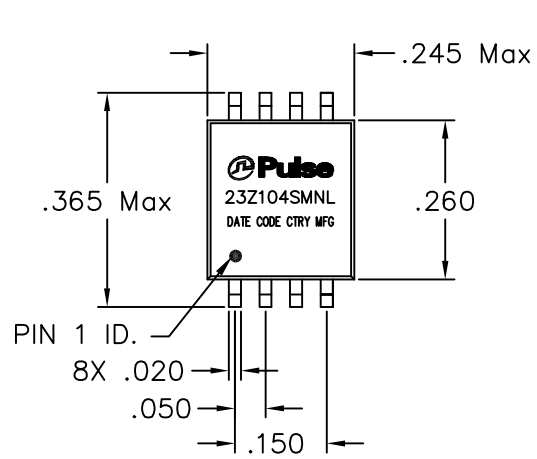


ELECTRICAL CHARACTERISTICS AT +25°C UNLESS OTHERWISE SPECIFIED
(FOR REFERENCE ONLY. USED FOR CUSTOMER INFORMATION.)

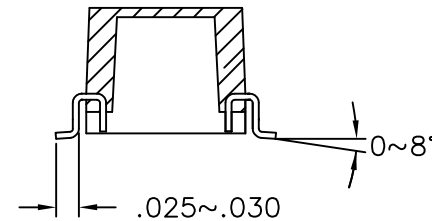
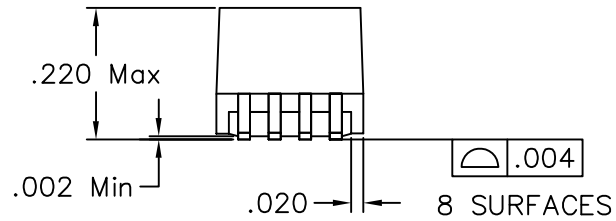
PARAMETER	SPECIFICATIONS			
OPERATING TEMP	0°C TO +70°C			
POLARITY	PER SCHEMATIC			
URNS RATIO	(1-8):(2-7):(3-6):(4-5)=1 : 1 : 1 : 1 ±5%			
ISOLATION RESISTANCE (IR AT 500 VDC)	10G OHMS MIN.			
DC RESISTANCE	0.2 OHMS MAX			
INDUCTANCE (OCL)	68 uH MIN (MEASURED AT 100 KHZ, 20 mVRMS)			
BETWEEN CHANNEL ISOLATION	500 VAC MIN @ 60 SECONDS			
IMPENDANCE	10,20 MHZ	30 MHZ	70 MHZ	100 MHZ
	700 OHMS MIN	600 OHMS MIN	200 OHMS MIN	200 OHMS MIN

© Copyright, 2017. Pulse Electronics Corp. All rights reserved. Pulse confidential & proprietary. (03/03/17)

PRODUCT DESCRIPTION	TLA DRAWING	PS DRAWING	SHEET	PART NO.	DATASHEET REV.
CHK,SIN,10D,1:1,SM,TU	23Z104SMNL-13	PS-2420.001-A	2 OF 3	23Z104SMNL	A



SUGGESTED LAND PATTERN



DIMENSIONS ARE IN INCHES WITH THE FOLLOWING
TOLERANCES:
.XX= ±.01
.XXX= ±.005

© Copyright, 2017. Pulse Electronics Corp. All rights reserved. Pulse confidential & proprietary. (03/03/17)

PRODUCT DESCRIPTION	TLA DRAWING	PS DRAWING	SHEET	PART NO.	DATASHEET REV.
CHK,SIN,10D,1:1,SM,TU	23Z104SMNL-13	PS-2420.001-A	3 OF 3	23Z104SMNL	A

单击下面可查看定价，库存，交付和生命周期等信息

[>>Pulse\(普思\)](#)