

Description: 2012 1.57G&2.4G&5GHz Triplexer

PART NUMBER: TPX2012LL95R1525A

Features:

- Compact size : 2.0x1.2x0.9mm
- RoHS compliant

Applications:

- WLAN, 802.11a/b/g/n
- ISM Band
- GPS

ELECTRICAL SPECIFICATIONS

DESCRIPTION	VALUE		
Pass Band	Low Band	Middle Band	High Band
	1570~1610MHz	2400~2500MHz	4900~5950MHz
Insertion loss	0.8dB (Max) at 25°C	0.7dB (Max) at 25°C	0.8dB (Max) at 25°C
V.S.W.R /Return-Loss	2.0(Max)/10.0dB(Min)	2.0(Max) /10.0dB(Min)	1.6(Max) /13.0dB(Min)
Attenuation	20dB(Min).@2.4~2.5GHz 20dB(Min).@4.8~6.0GHz	17.5dB(Min).@4.8~5.0GHz 10dB(Min).@7.2~7.5GHz 10dB(Min).@9.6~10.0GHz	27dB(Min).@0.86~0.96GHz 25dB(Min).@1.545~1.605GHz 25dB(Min).@1.71~1.99GHz 30dB(Min).@2.17GHz 8dB(Min).@8.1GHz 15dB(Min).@8.82~9.8GHz 27dB(Min).@9.8~10.76GHz 25dB(Min).@10.76~11.8GHz
Isolation	Middle Band to High Band: 17dB(Min). @4.8~5.0GHz Middle Band to Low Band: 20dB(Min).@1.559~1.606GHz High Band to Low Band: 25dB(Min). @1.559~1.606GHz		
Operating Temperature	-40 ~ 85°C		
Dimension	2.0 x 1.2 x 0.9mm		

In the effort to improve our products, we reserve the right to make changes judged to be necessary.

CONFIDENTIAL AND PROPRIETARY INFORMATION

This document contains confidential and proprietary information of Pulse Electronics, Inc. (Pulse) and is protected by copyright, trade secret and other state and federal laws. Its receipt or possession does not convey any rights to reproduce, disclose its contents, or to manufacture, use or sell anything it may describe. Reproduction, disclosure or use without specific written authorization of Pulse is strictly forbidden.

For more information:



Pulse Worldwide Headquarters  
15255 Innovation Drive #100  
San Diego, CA 92128  
USA  
Tel:1-858-674-8100

Pulse/Larsen Antennas  
18110 SE 34<sup>th</sup> St Bldg 2 Suite 250  
Vancouver, WA 98683  
USA  
Tel: 1-360-944-7551

Europe Headquarters  
Pulse GmbH & Do, KG  
Zeppelinstrasse 15  
Herrenberg, Germany

Pulse (Suzhou) Wireless Products Co, Inc.  
99 Huo Ju Road(#29 Bldg,4<sup>th</sup> Phase  
Suzhou New District  
Jiangsu Province, Suzhou 215009 PR China  
Tel: 86 512 6807 9998

Description: 2012 1.57G&2.4G&5GHz Triplexer

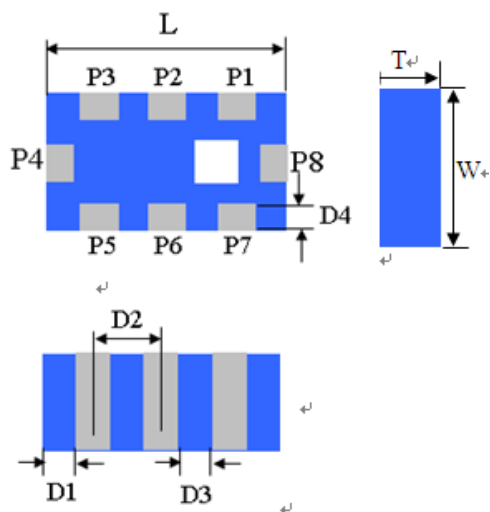
PART NUMBER: TPX2012LL95R1525A

**MECHANICAL DIMENSION**

Outline

Termination

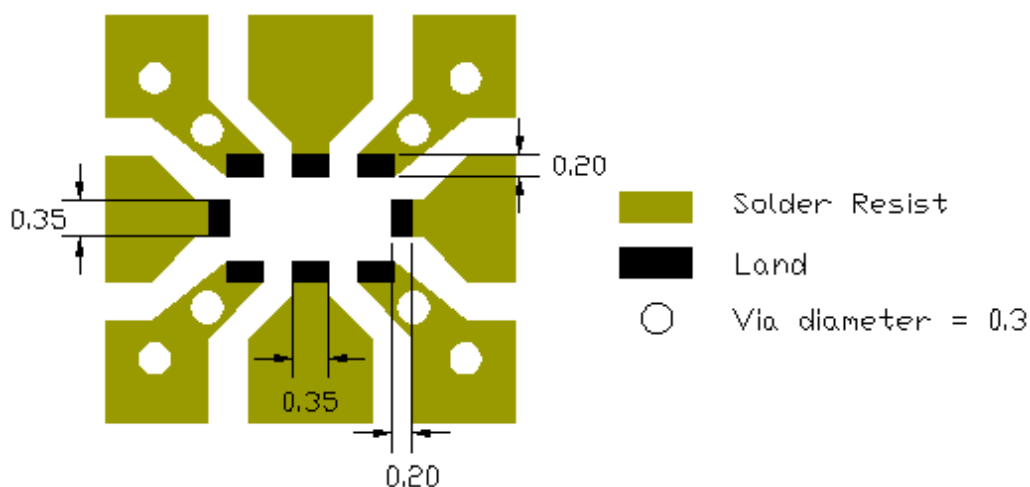
Mechanical



Terminal name	Dimension
P1	GND
P2	Common
P3	GND
P4	Low band
P5	GND
P6	High band
P7	GND
P8	Middle band

	Dimension
L (mm)	2.00±0.15
W (mm)	1.25±0.15
T (mm)	0.90±0.15
P1 (mm)	0.40±0.15
P2 (mm)	0.40±0.15
P3 (mm)	0.40±0.15
P4 (mm)	0.50±0.15
P5 (mm)	0.40±0.15
P6 (mm)	0.40±0.15
P7 (mm)	0.40±0.15
P8 (mm)	0.50±0.15
D1 (mm)	0.2±0.15
D2 (mm)	0.65±0.15
D3 (mm)	0.35±0.15
D4 (mm)	0.3±0.15

**Reference design of EVB**



Line width should be designed to match 50Ω characteristic impedance, depending on PCB material and thickness.

In the effort to improve our products, we reserve the right to make changes judged to be necessary.

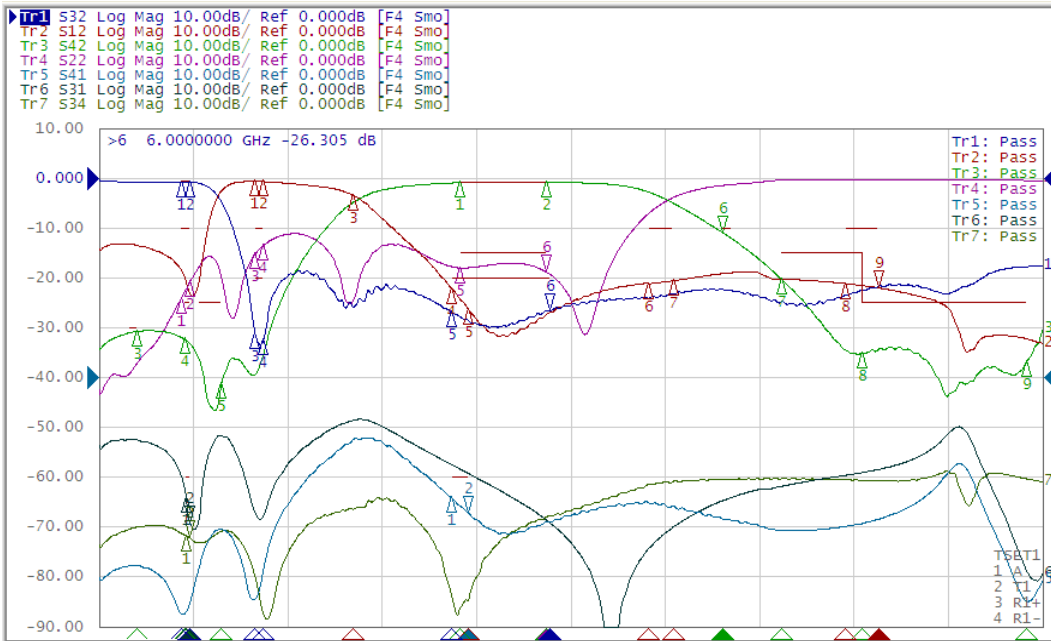
CONFIDENTIAL AND PROPRIETARY INFORMATION

This document contains confidential and proprietary information of Pulse Electronics, Inc. (Pulse) and is protected by copyright, trade secret and other state and federal laws. Its receipt or possession does not convey any rights to reproduce, disclose its contents, or to manufacture, use or sell anything it may describe. Reproduction, disclosure or use without specific written authorization of Pulse is strictly forbidden.

Description: 2012 1.57G&2.4G&5GHz Triplexer

PART NUMBER: TPX2012LL95R1525A

ELECTRICAL PERFORMANCES



- Measured on Agilent E5071C Network Analyzer
- Common port: Port 2 (Return loss S22)
- Low band port: Port 3 (Low band insertion loss S32)
- Middle band port Port1 (Middle band insertion loss S12)
- High band port: Port 4 (High band insertion loss S42)

Ch1	Tr1	S32	1	1.5000000	GHZ	-0.5586	dB	Ch1	Tr4	S22	1	1.5000000	GHZ	-23.867	dB
Ch1	Tr1	S32	2	1.6100000	GHZ	-0.5791	dB	Ch1	Tr4	S22	2	1.6100000	GHZ	-20.476	dB
Ch1	Tr1	S32	3	2.4000000	GHZ	-30.879	dB	Ch1	Tr4	S22	3	2.4000000	GHZ	-14.974	dB
Ch1	Tr1	S32	4	2.5000000	GHZ	-32.204	dB	Ch1	Tr4	S22	4	2.5000000	GHZ	-13.230	dB
Ch1	Tr1	S32	5	4.8000000	GHZ	-26.721	dB	Ch1	Tr4	S22	5	4.9000000	GHZ	-17.736	dB
Ch1	Tr1	S32	>6	6.0000000	GHZ	-26.305	dB	Ch1	Tr4	S22	6	5.9500000	GHZ	-18.567	dB
Ch1	Tr2	S12	1	2.4000000	GHZ	-0.5684	dB	Ch1	Tr5	S41	1	4.8000000	GHZ	-23.936	dB
Ch1	Tr2	S12	2	2.5000000	GHZ	-0.5735	dB	Ch1	Tr5	S41	2	5.0000000	GHZ	-26.923	dB
Ch1	Tr2	S12	3	3.6000000	GHZ	-3.2768	dB	Ch1	Tr6	S31	1	1.5590000	GHZ	-23.813	dB
Ch1	Tr2	S12	4	4.8000000	GHZ	-21.918	dB	Ch1	Tr6	S31	2	1.6060000	GHZ	-28.857	dB
Ch1	Tr2	S12	5	5.0000000	GHZ	-26.187	dB	Ch1	Tr7	S34	1	1.5590000	GHZ	-31.531	dB
Ch1	Tr2	S12	6	7.2000000	GHZ	-20.939	dB	Ch1	Tr7	S34	2	1.6060000	GHZ	-31.979	dB
Ch1	Tr2	S12	7	7.5000000	GHZ	-20.324	dB								
Ch1	Tr2	S12	8	9.6000000	GHZ	-20.905	dB								
Ch1	Tr2	S12	9	10.000000	GHZ	-21.743	dB								
Ch1	Tr3	S42	1	4.9000000	GHZ	-0.6100	dB								
Ch1	Tr3	S42	2	5.9500000	GHZ	-0.6780	dB								
Ch1	Tr3	S42	3	960.00000	MHZ	-30.459	dB								
Ch1	Tr3	S42	4	1.5450000	GHZ	-32.103	dB								
Ch1	Tr3	S42	5	1.9900000	GHZ	-41.089	dB								
Ch1	Tr3	S42	6	8.1000000	GHZ	-10.656	dB								
Ch1	Tr3	S42	7	8.8200000	GHZ	-20.082	dB								
Ch1	Tr3	S42	8	9.8000000	GHZ	-34.917	dB								
Ch1	Tr3	S42	9	11.800000	GHZ	-36.619	dB								

Frequency Characteristics

In the effort to improve our products, we reserve the right to make changes judged to be necessary.

CONFIDENTIAL AND PROPRIETARY INFORMATION

This document contains confidential and proprietary information of Pulse Electronics, Inc. (Pulse) and is protected by copyright, trade secret and other state and federal laws. Its receipt or possession does not convey any rights to reproduce, disclose its contents, or to manufacture, use or sell anything it may describe. Reproduction, disclosure or use without specific written authorization of Pulse is strictly forbidden.

**Description:** 2012 1.57G&2.4G&5GHz Triplexer

**PART NUMBER: TPX2012LL95R1525A**

### REVISION HISTORY

Revision	Date	Description
Version 1	Set. 30, 2020	- New issue

单击下面可查看定价，库存，交付和生命周期等信息

[>>Pulse\(普思\)](#)