

XDSL SPLITTER FILTER MODULE

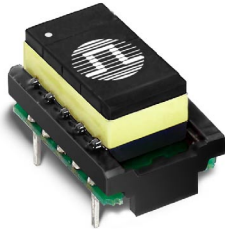
B8845NL







SmartER Series



Pulse

A TECHNITROL COMPANY



- 
 POTS and ISDN CO splitter for standard ADSL / VDSL2 applications
- 
 LPF compliant with ETSI specification TS 101-952-1-4, v1.1.1 matched to DT Complex Impedance ($Z_R = 220 \Omega + 820 \Omega / 115 \text{ nF}$) and ISDN 4B3T
- 
 Part of a standard series with footprint compatibility
- 
 For ADSL, ADSL2+, VDSL, and VDSL2 applications
- 
 Compliant with Broadband Forum TR-127 standard for VDSL2 applications
- 
 Patented technology US7598837, US7598839, CN1667763, EP1644943, TWI316724, CA2531599

Electrical Specifications @ 25°C

PARAMETER	FREQUENCY	
ISDN Impedance	1 kHz to 80 kHz	150 Ω
ISDN Insertion Loss	1 kHz to 60 kHz	1.2 dB MAX
	60 kHz to 80 kHz	2.0 dB MAX
ISDN Return Loss	1 kHz to 60 kHz	16 dB MIN
	60 kHz to 80 kHz	14 dB MIN
POTS Impedance	200 Hz to 4 kHz	($Z_R = 220 \Omega + 820 \Omega / 115 \text{ nF}$)
POTS Insertion Loss	@ 1 kHz	1.0 dB MAX
POTS Insertion Loss Distortion	200 Hz to 4 kHz	1.0 dB MAX
POTS Return Loss	300 Hz to 1.6 kHz	15 dB MIN
	1.6 kHz to 3.4 kHz	12 dB MIN
POTS Group Delay Distortion	200 Hz to 4 kHz	<200 μS
Longitudinal Balance	50 Hz to 30 kHz	40 dB MIN
	30 kHz to 1104 kHz	50 dB MIN
	1104 kHz to 30 MHz	30 dB MIN
xDSL Insertion Loss	138 kHz to 150 kHz	55 dB MIN
	150 kHz to 1.1 MHz	65 dB MIN
	1.1 MHz to 30 MHz	55 dB MIN
ISDN Group Delay Distortion	1 kHz to 80 kHz	<20 μS
Metering Pulses	12 kHz and 16 kHz	3 dB MAX
DC Current		80 mA MAX
Total DC Resistance		5.8 Ω MAX

Mechanical and schematic on following page . . .

XDSL SPLITTER FILTER MODULE

B8845NL

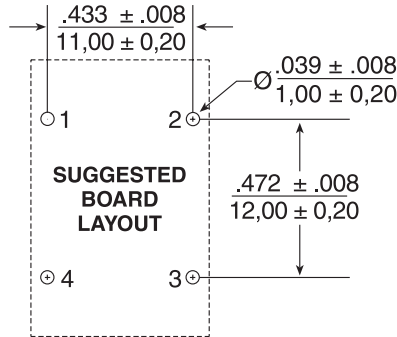
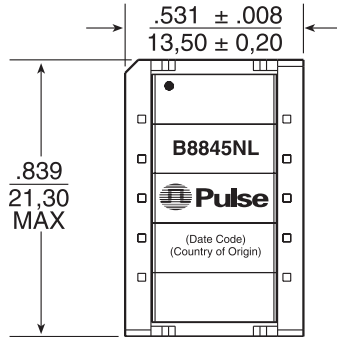
SmartER Series



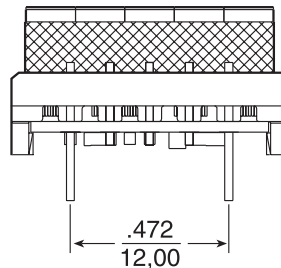
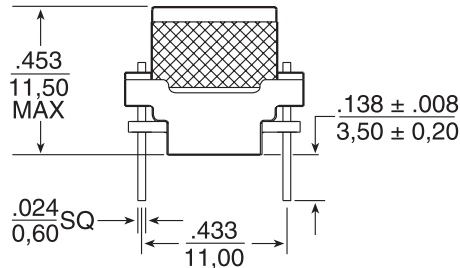
Pulse
A TECHNITROL COMPANY

Mechanical

B8845NL

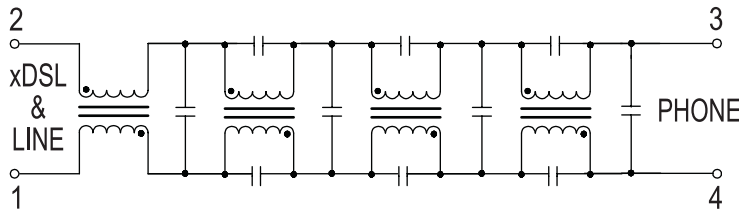


Weight 8.0 grams
 Tray 80/tray
 Dimensions: Inches
 mm
 Unless otherwise specified,
 all tolerances are ± .010
 0,25



Schematic

B8845NL



For More Information:

Pulse Worldwide Headquarters

12220 World Trade Dr.
 San Diego, CA 92128
 U.S.A.

www.pulseeng.com
 Tel: 858 674 8100
 Fax: 858 674 8262

Pulse Europe

Zeppelinstrasse 15
 D-71083 Herrenberg
 Germany

Tel: 49 7032 7806 0
 Fax: 49 7032 7806 135

Pulse China Headquarters

B402, Shenzhen Academy of
 Aerospace Technology Bldg.
 10th Kejinan Rd.
 High-Tech Zone
 Nanshan District
 Shenzhen, PR China 518057

Tel: 86 755 33966678
 Fax: 86 755 33966700

Pulse North China

Room 2704/2705
 Super Ocean Finance Ctr.
 2067 Yan An Rd. West
 Shanghai 200336
 China

Tel: 86 21 62787060
 Fax: 86 2162786973

Pulse South Asia

135 Joo Seng Rd.
 #03-02
 PM Industrial Bldg.
 Singapore 368363

Tel: 65 6287 8998
 Fax: 65 6287 8998

Pulse North Asia

3F, No. 198
 Zhongyuan Rd.
 Zhongli City
 Taoyuan County 320
 Taiwan R. O. C.

Tel: 886 3 4356768
 Fax: 886 3 4356823 (Pulse)
 Fax: 886 3 4356820 (FRE)

Performance warranty of products offered on this data sheet is limited to the parameters specified. Data is subject to change without notice. Other brand and product names mentioned herein may be trademarks or registered trademarks of their respective owners.

© Copyright, 2010. Pulse Engineering, Inc. All rights reserved.

单击下面可查看定价，库存，交付和生命周期等信息

[>>Pulse\(普思\)](#)