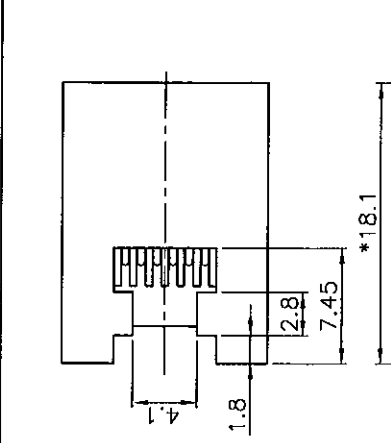
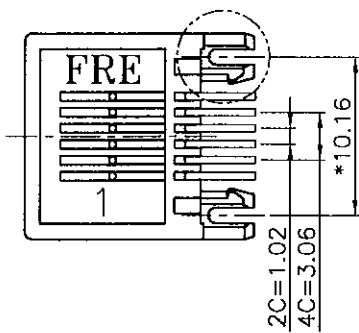
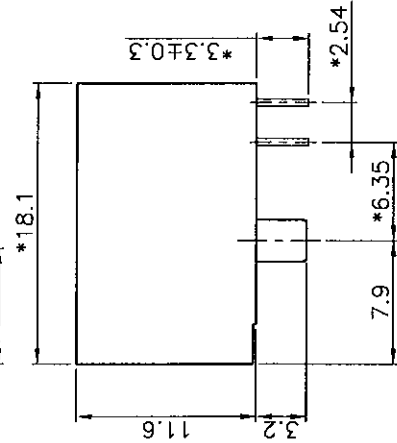
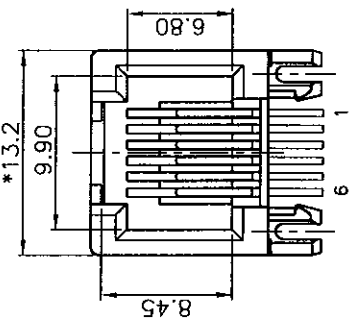


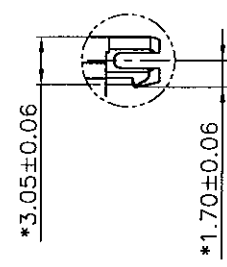
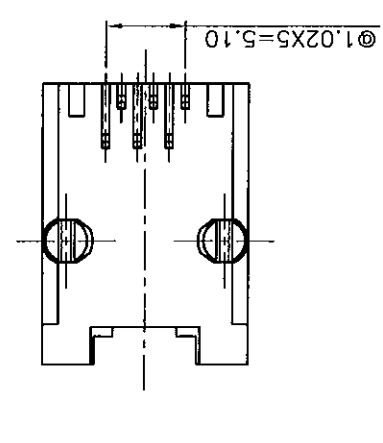
REVISION RECORD				
REV	ECO	DESCRIPTION	DRFT	CHKD
△		ADD P/N	PKM	
△		ADD P/N	10/17/05*	
△		ADD P/N	11/21/05*	
△		ADD P/N	JMAYN	
△		ADD P/N	7/19/08	
△		ADD P/N	ANKUE	
△		ADD P/N	10/26/08	



PC Board Layout t=1.60mm
Component Side Shown



- NOTES:**
- ELECTRICAL:**
- VOLTAGE RATING : 150 VAC RMS.
 - CURRENT RATING : 1.5 AMP.
 - CONTACT RESISTANCE : 30 MILLIOHMS MAX.
 - INSULATION RESISTANCE: 1000 MEGOHMS MIN @ 500 VDC.
 - DIELECTRIC STRENGTH : 1000 VAC RMS 60Hz, 1MIN.
- MECHANICAL:**
- HOUSING MATERIAL : FR50&PBT+30% .G.F UL94V-0.
 - CONTACT MATERIAL : PHOSPHOR BRONZE Ø0.46mm.
 - PLATING : GOLD PLATING OVER NICKEL.
 - OPERATING LIFE : 750 CYCLES MIN.
 - PCB RETENTION PRE-SOLDER : 1 LB MIN.
 - PCB RETENTION POST-SOLDER: 10 LBS MIN.
- ENVIRONMENTAL:**
- STORAGE : -40°C TO +85°C.
 - OPERATION: -40°C TO +85°C.
 - WAVE SOLDERING TEMPERATURE: 230~250°C (5~10 SECONDS)
- MATES WITH MODULAR PLUG CONFORMING TO FCC PART 68, SUBPART F.
CUL FILE NO. E163191
ROHS PART NUMBER:E536X-300XX-L



- ENVIRONMENTAL:**
- STORAGE : -40°C TO +85°C.
 - OPERATION: -40°C TO +85°C.
 - WAVE SOLDERING TEMPERATURE: 230~250°C (5~10 SECONDS)
- MATES WITH MODULAR PLUG CONFORMING TO FCC PART 68, SUBPART F.
CUL FILE NO. E163191
ROHS PART NUMBER:E536X-300XX-L
- 1- 3u" 2- 6u" 3-15u"
2- 2C
4- 4C
6- 6C
- MATERIAL OF HS'G :
0G-PBT BK.
4G-FR50 BK
A AG-PBT+30% G.F. WHITE (PBT NATURAL COLOR)
AG-PBT+30% G.F. PANTON RED 186C
AG-PBT+30% G.F. PANTON GREEN 7479C
AG-PBT+30% G.F. PANTON YELLOW 114C

DFTO	CNO	DATE	DR	DATE	DR	DATE	DR	DATE

TOLERANCES	EXCEPT AS NOTED
MM	
.0 ±0.12	±
.00 ±0.15	±
.000 ±0.075	±

ANGLES	± 0.5

QTY :	FINISH :	SCALE :
		3 : 1

DETAILED LISTS	
THIRD ANGLE PROJECTION	

DO NOT SCALE DRAWING	
SHEET 1	OF 1

FULL RISE ELECTRONIC CO., LTD	
TITLE	
11.5mm SIDE PCB JACK 6P	
DRAWING NO. GE53022-LC	REV 4
/PART NO.	SEE NOTE
SIZE A3	

单击下面可查看定价，库存，交付和生命周期等信息

[>>Pulse\(普思\)](#)