







# XDSL SPLITTER FILTER MODULE

## B8859NL

SmartER series



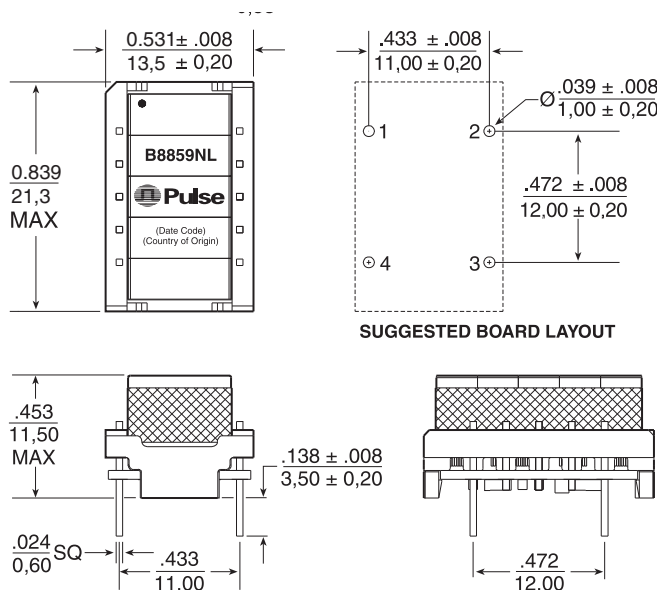
-  POTS CO splitter for standard ADSL / VDSL2 applications
-  LPF compliant with ETSI complex impedance ( $Z_L = 270 \Omega + 750 \Omega / 150 \text{ nF}$ ), and option A of ETSI specification TS 101-952-1 v1.1.1, and with the optional requirement, relative to metering pulse at 12 kHz (Clause 6.7)
-  Part of a standard series which has footprint compatibility
-  For ADSL, ADSL2+, VDSL and VDSL2 applications
-  Compliant with Broadband Forum TR-127 standard for VDSL2 applications
-  Patented technology US7598837, US7598839, CN1667763, EP1644943, TWI316724, CA2531599

### Electrical Specifications @ 25°C

PARAMETER	FREQUENCY	
POTS Impedance	100 Hz to 4 kHz	$270 \Omega + 750 \Omega / 150 \text{ nF}$
POTS Insertion Loss	1 kHz	1 dB MAX
POTS Insertion Loss Distortion relative to 1 kHz	200 Hz to 4 kHz	1 dB MAX
POTS Return Loss	200 Hz to 3.4k Hz	12 dB MIN
	3.4k Hz to 4 kHz	8 dB MIN
POTS Group Delay	200 Hz to 4 kHz	200 $\mu\text{s}$ MAX
Longitudinal Balance	50 Hz to 600 Hz	40 dB MIN
	600 Hz to 3.4 kHz	46 dB MIN
	3.4 kHz to 4 kHz	40 dB MIN
xDSL Insertion Loss	32 kHz to 30 MHz	55 dB MIN
DC Current		80 mA MAX
Metering Pulse	12 kHz	3 dB MAX
Total DC Resistance		50 $\Omega$ MAX

### Mechanical

#### B8859NL



Weight . . . . . 5.0 grams  
 Tray . . . . . .80/tray  
 Dimensions:  $\frac{\text{Inches}}{\text{mm}}$   
 Unless otherwise specified, all tolerances are  $\pm \frac{.010}{.25}$

# XDSL SPLITTER FILTER MODULE

## B8859NL

SmartER series

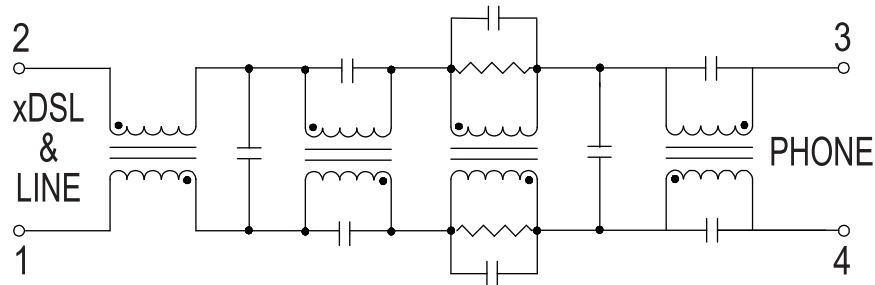


# Pulse

A TECHNITROL COMPANY

### Schematic

**B8859NL**



### For More Information:

#### Pulse Worldwide Headquarters

12220 World Trade Dr.  
San Diego, CA 92128  
U.S.A.

[www.pulseeng.com](http://www.pulseeng.com)

Tel: 858 674 8100  
Fax: 858 674 8262

#### Pulse Europe

Zeppelinstrasse 15  
D-71083 Herrenberg  
Germany

Tel: 49 7032 7806 0  
Fax: 49 7032 7806 135

#### Pulse China Headquarters

B402, Shenzhen Academy of  
Aerospace Technology Bldg.  
10th Kejinan Rd.  
High-Tech Zone  
Nanshan District  
Shenzhen, PR China 518057

Tel: 86 755 33966678  
Fax: 86 755 33966700

#### Pulse North China

Room 2704/2705  
Super Ocean Finance Ctr.  
2067 Yan An Rd. West  
Shanghai 200336  
China

Tel: 86 21 62787060  
Fax: 86 2162786973

#### Pulse South Asia

135 Joo Seng Rd.  
#03-02  
PM Industrial Bldg.  
Singapore 368363

Tel: 65 6287 8998  
Fax: 65 6287 8998

#### Pulse North Asia

3F, No. 198  
Zhongyuan Rd.  
Zhongli City  
Taoyuan County 320  
Taiwan R. O. C.

Tel: 886 3 4356768  
Fax: 886 3 4356823 (Pulse)  
Fax: 886 3 4356820 (FRE)

Performance warranty of products offered on this data sheet is limited to the parameters specified. Data is subject to change without notice. Other brand and product names mentioned herein may be trademarks or registered trademarks of their respective owners.

© Copyright, 2010. Pulse Engineering, Inc. All rights reserved.

[www.pulseeng.com](http://www.pulseeng.com)

单击下面可查看定价，库存，交付和生命周期等信息

[>>Pulse\(普思\)](#)