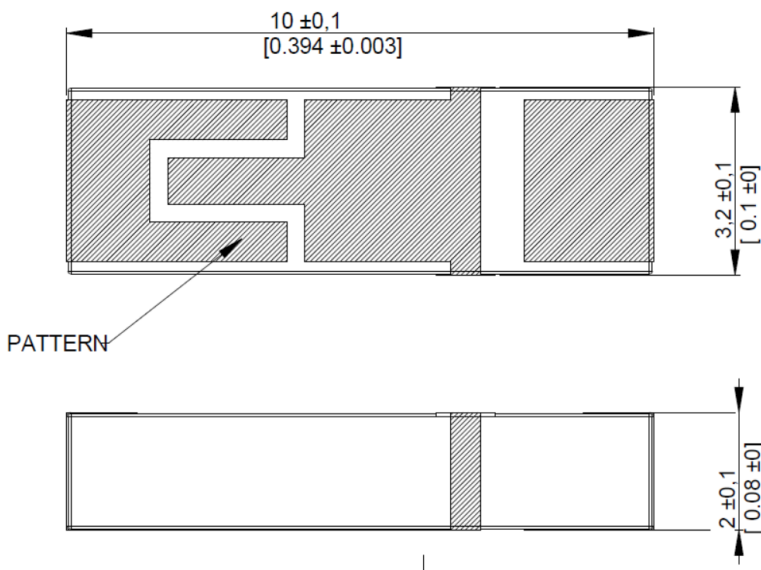


**Features:**

- 3 in1 –combo antenna
 - Port 1: 868/915MHz
 - Port 2: 2.4GHz
- Compact size 3.2x10x2mm
- SMT mounting on PCB
- Tape & Reel packing
- High isolation between ports >20dB

Applications:

- ISM band radios
- 868MHz, 915MHz, 2.4GHz
- IoT, M2M, set top boxes, devices requiring small embedded multiband ISM antenna



All dimensions are in mm / inches

Issue: 2049

In the effort to improve our products, we reserve the right to make changes judged to be necessary.

CONFIDENTIAL AND PROPRIETARY INFORMATION

This document contains confidential and proprietary information of Pulse Electronics, Inc. (Pulse) and is protected by copyright, trade secret and other state and federal laws. Its receipt or possession does not convey any rights to reproduce, disclose its contents, or to manufacture, use or sell anything it may describe. Reproduction, disclosure or use without specific written authorization of Pulse is strictly forbidden.

For more information:

Pulse Worldwide Headquarters
12220 World Trade Drive
San Diego, CA 92128
USA
Tel: 1-858-674-8100

Pulse/Larsen Antennas
18110 SE 34th St Bldg 2 Suite 250
Vancouver, WA 98683
USA
Tel: 1-360-944-7551

Europe Headquarters
Pulse GmbH & Do, KG
Zeppelinstrasse 15
Herrenberg, Germany

Pulse (Suzhou) Wireless Products Co, Inc.
99 Huo Ju Road(#29 Bldg,4th Phase
Suzhou New District
Jiangsu Province, Suzhou 215009 PR China
Tel: 86 512 6807 9998

Series: Ceramic antenna**PART NUMBER:** W3320**ELECTRICAL SPECIFICATIONS**

Frequency	ISM868/915MHz, ISM2.4GHz
Nominal Impedance	50Ω
Return Loss	<-7dB @868/915MHz <-5dB@2.4
Gain	1dBi +/- 1 dB@868/915MHz 3dBi +/- 1 dB@2.4GHz
Radiation Pattern	Omni
Polarization:	Vertical
Power withstanding	2W

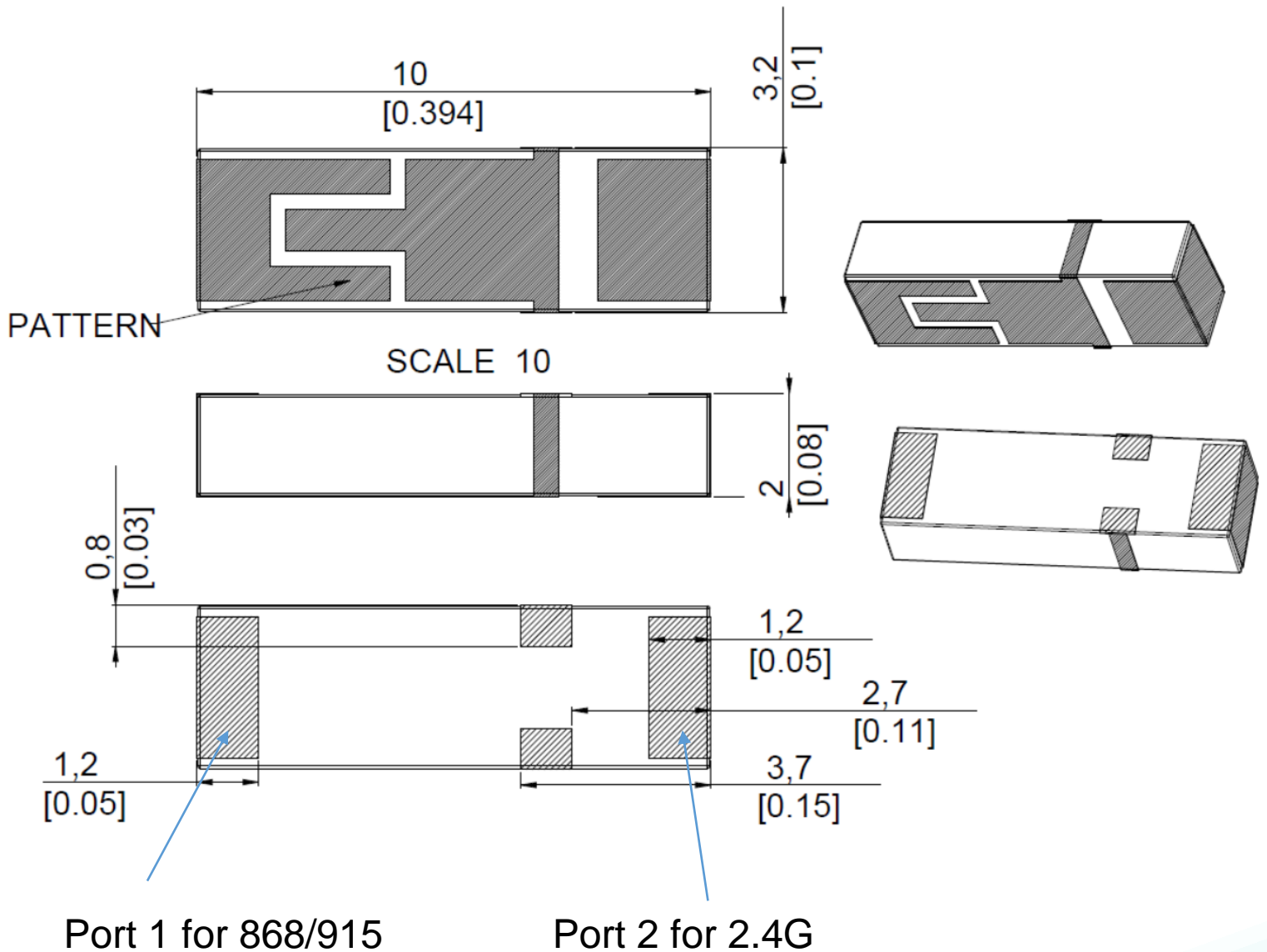
Series: Ceramic antenna**PART NUMBER:** W3320**MECHANICAL SPECIFICATIONS**

Weight	0.3 g
Overall Length	10[0.39] MM[INCHES]
Over all width	3.2[0.12] MM[INCHES]
Over all thickness	2[0.08] MM[INCHES]
MSL Level	1

ENVIRONMENTAL SPECIFICATIONS

Operating temperature	-40/+85° C
-----------------------	------------

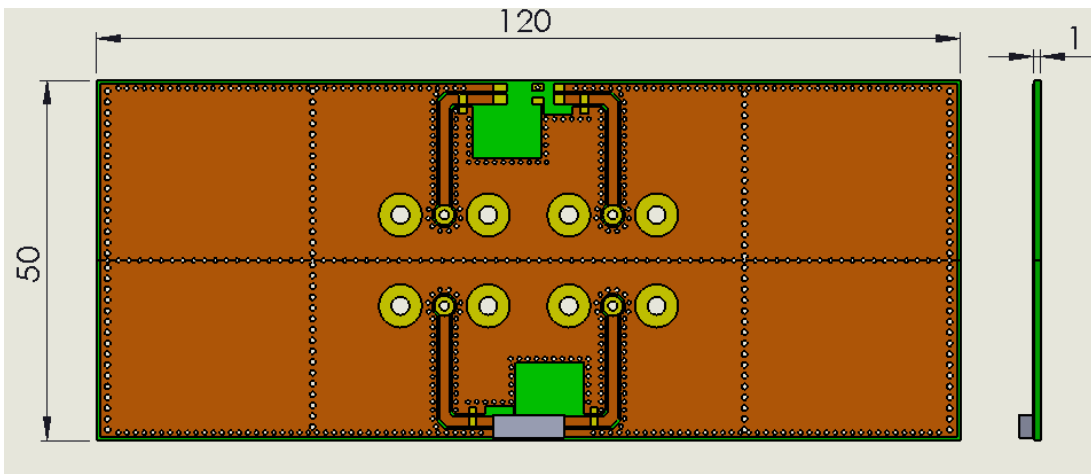
MECHANICAL DRAWING



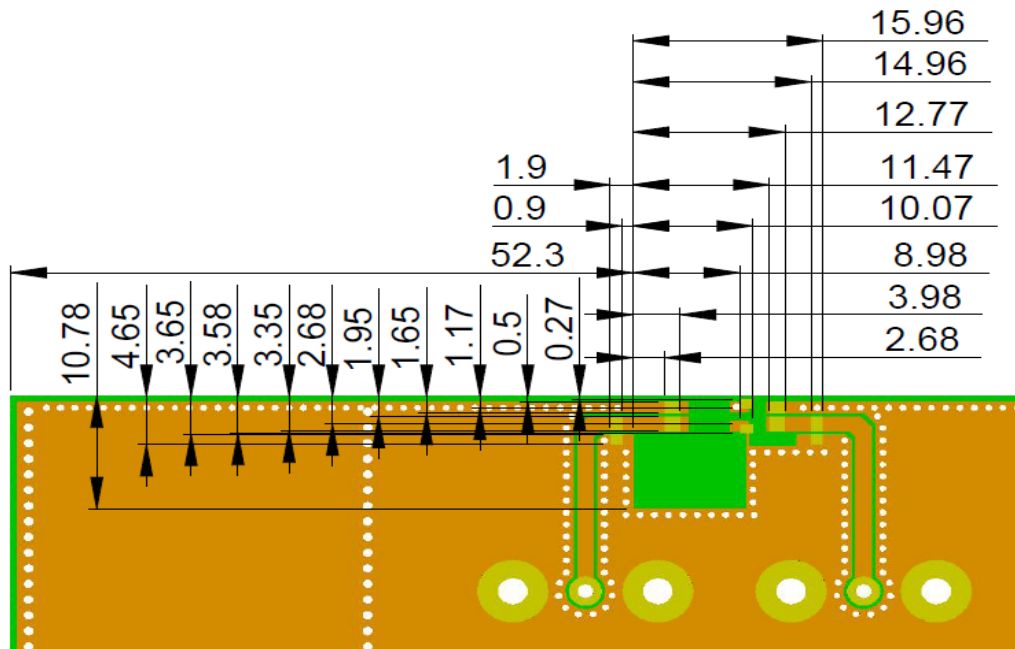
OTHER SPECIFICATIONS

PCB LAYOUT

1, PCB material, FR4, size, 120X50X1mm



2, Clearance area (Top)



Issue: 2049

In the effort to improve our products, we reserve the right to make changes judged to be necessary.

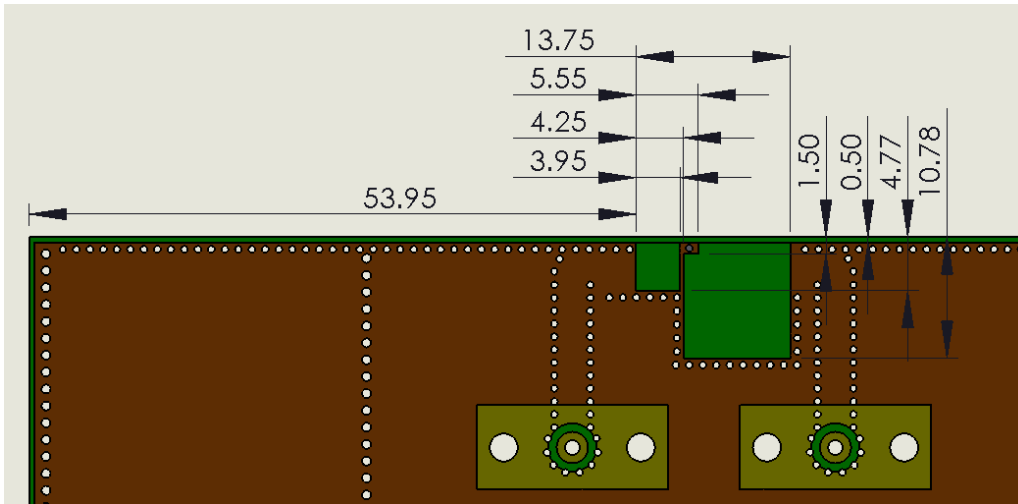
CONFIDENTIAL AND PROPRIETARY INFORMATION

This document contains confidential and proprietary information of Pulse Electronics, Inc. (Pulse) and is protected by copyright, trade secret and other state and federal laws. Its receipt or possession does not convey any rights to reproduce, disclose its contents, or to manufacture, use or sell anything it may describe. Reproduction, disclosure or use without specific written authorization of Pulse is strictly forbidden.

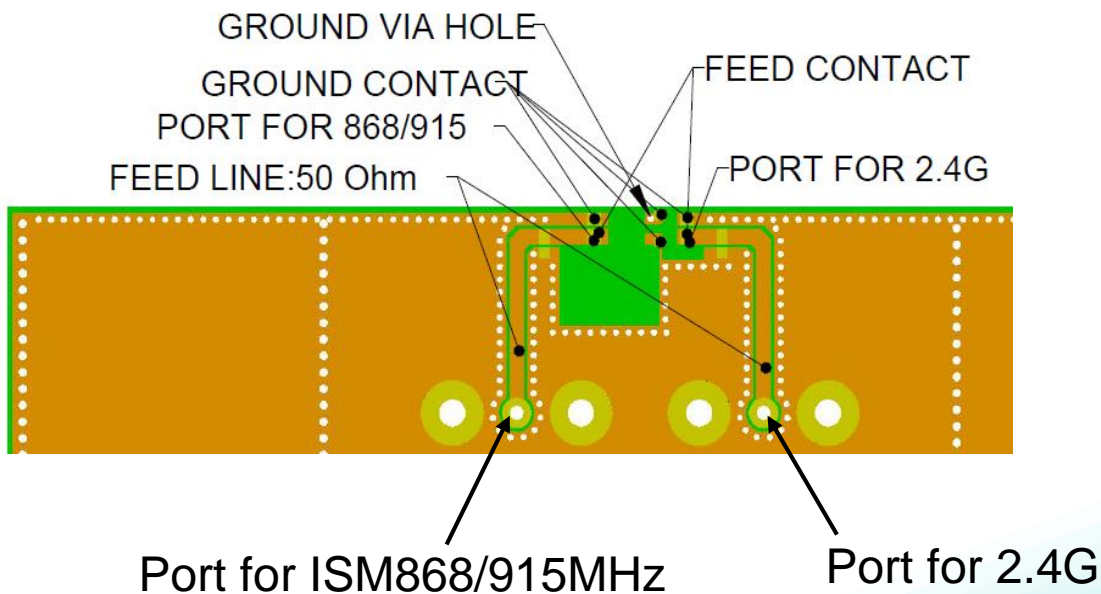
OTHER SPECIFICATIONS

PCB LAYOUT

3, Clearance area (Bottom)



4, PCB Features

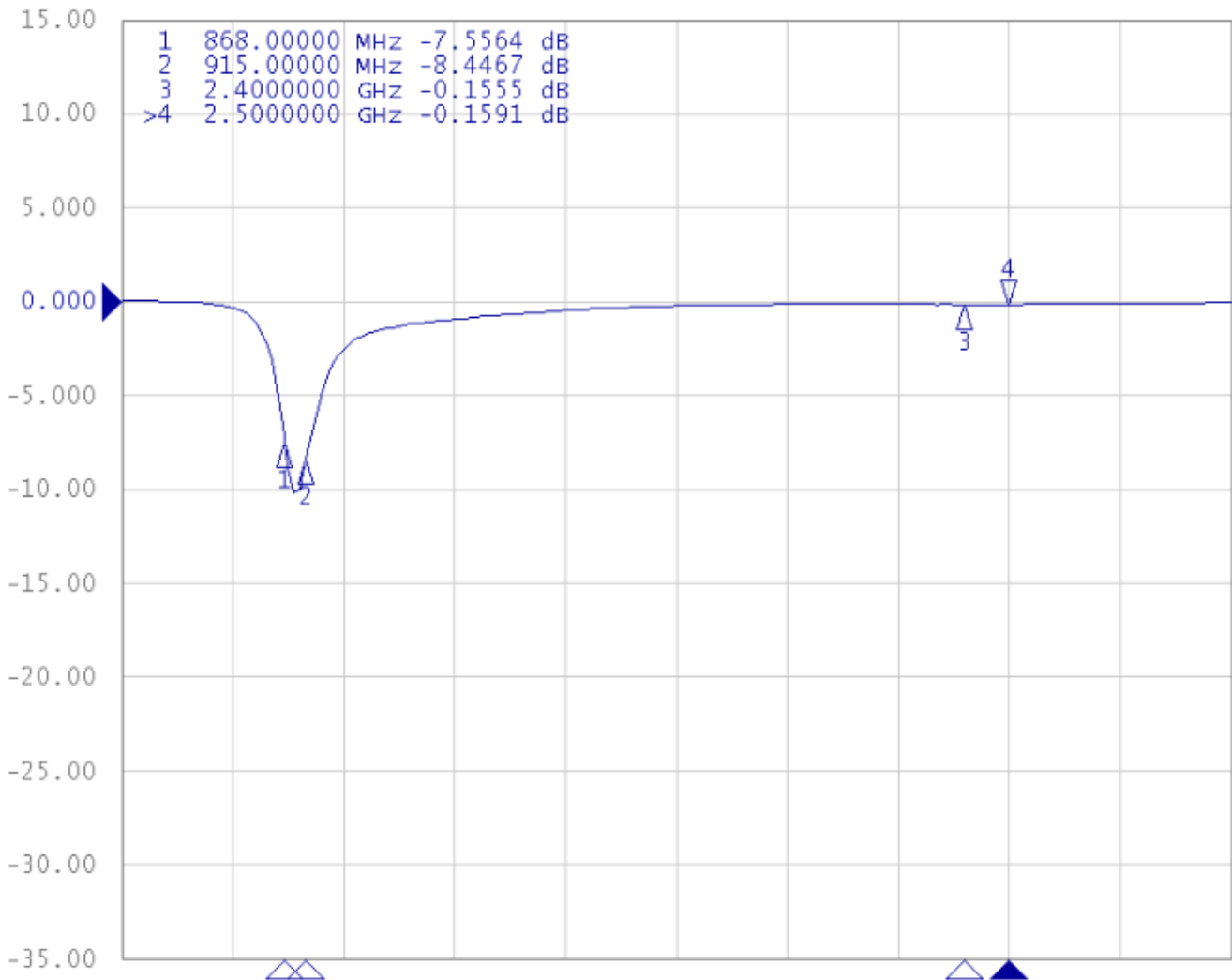


CHARTS

Return Loss

ISM868/915MHz

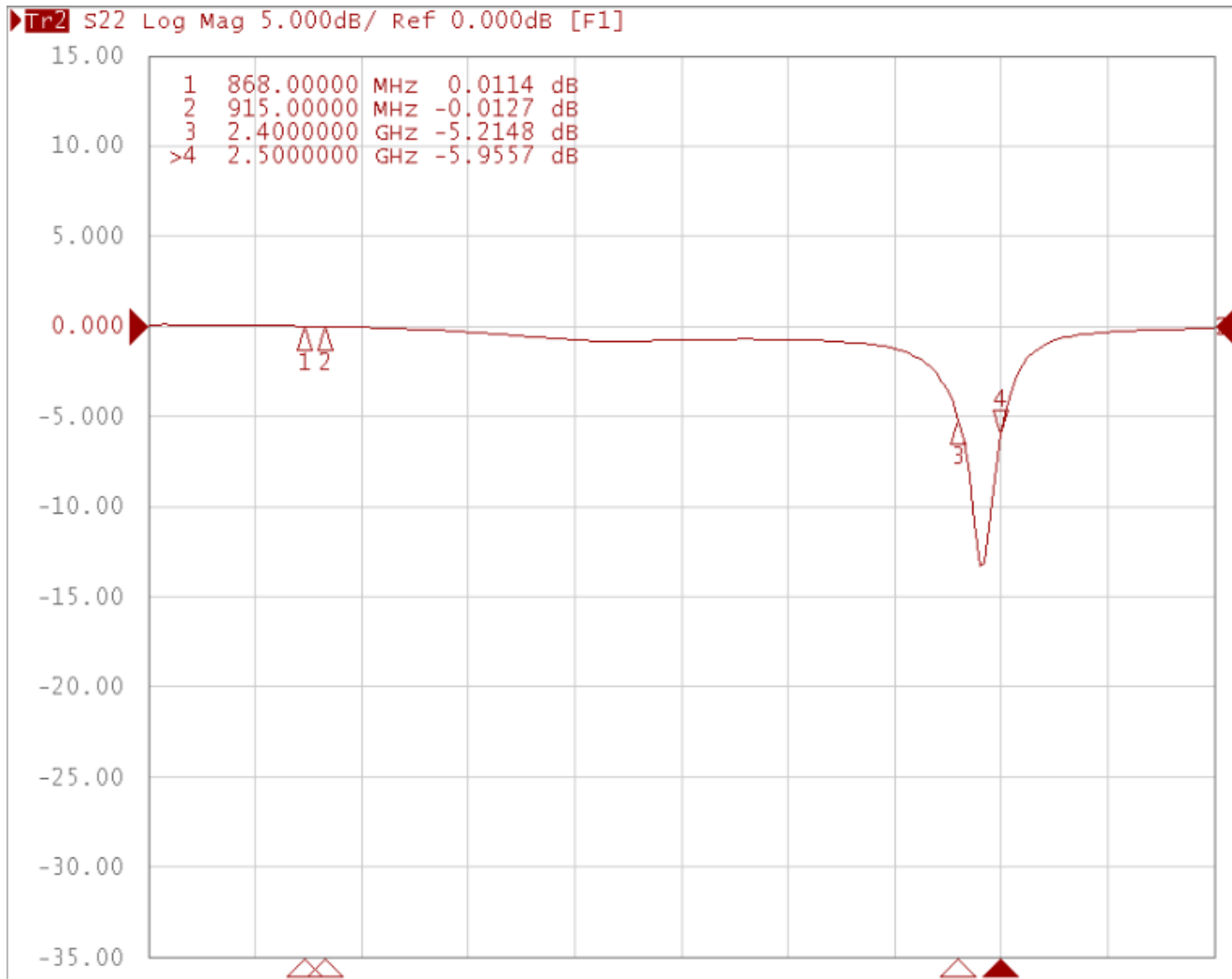
▶ Tr1 S11 Log Mag 5.000dB/ Ref 0.000dB [F1 Smo]



CHARTS

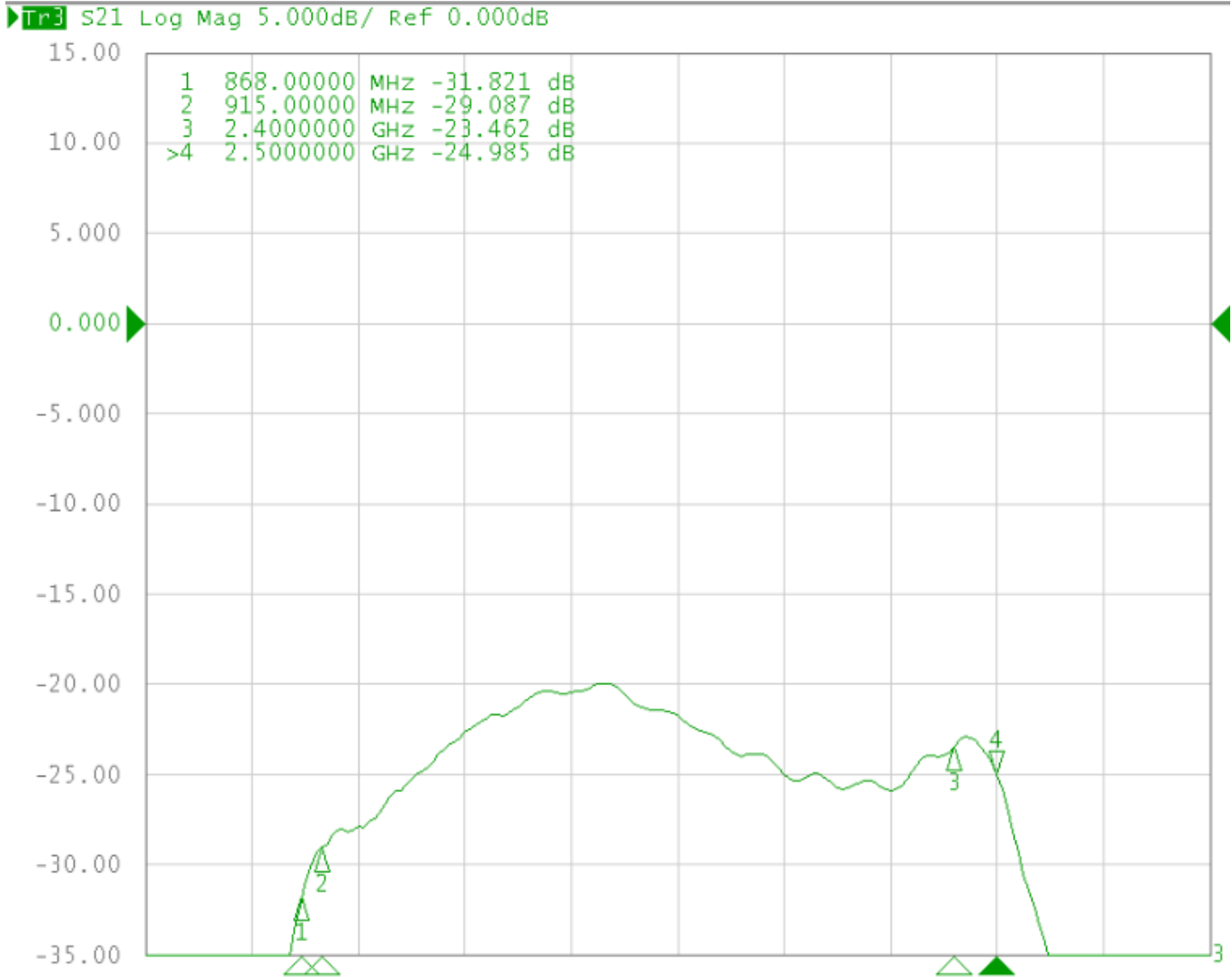
Return Loss

ISM2.4G



CHARTS

Isolation



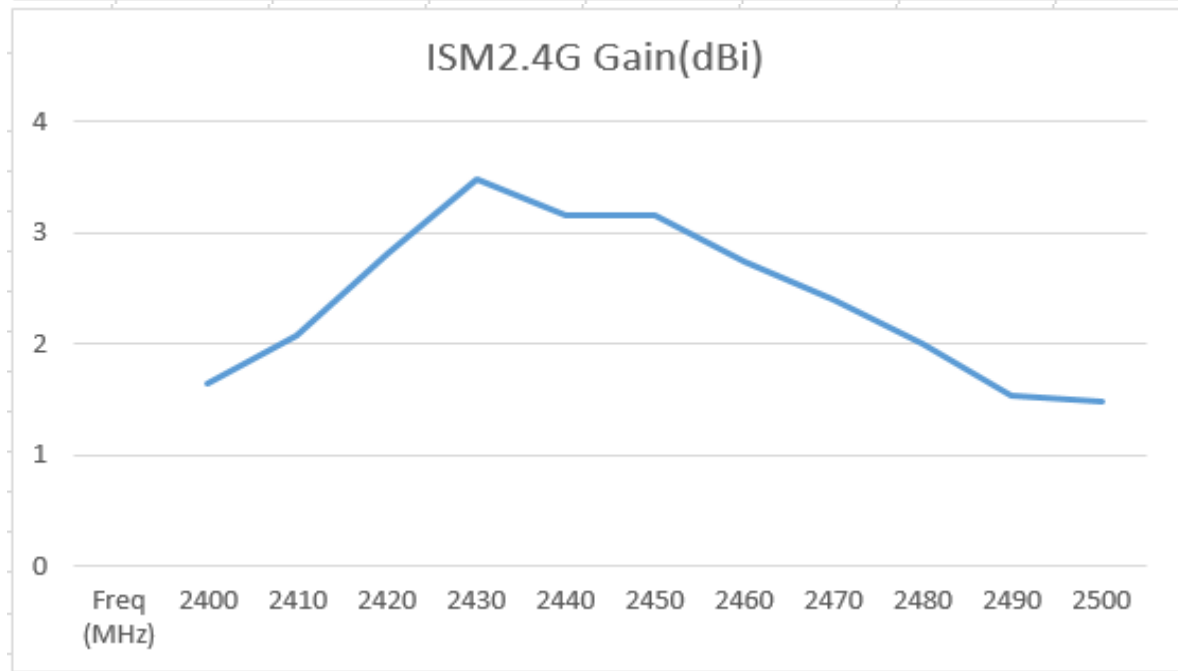
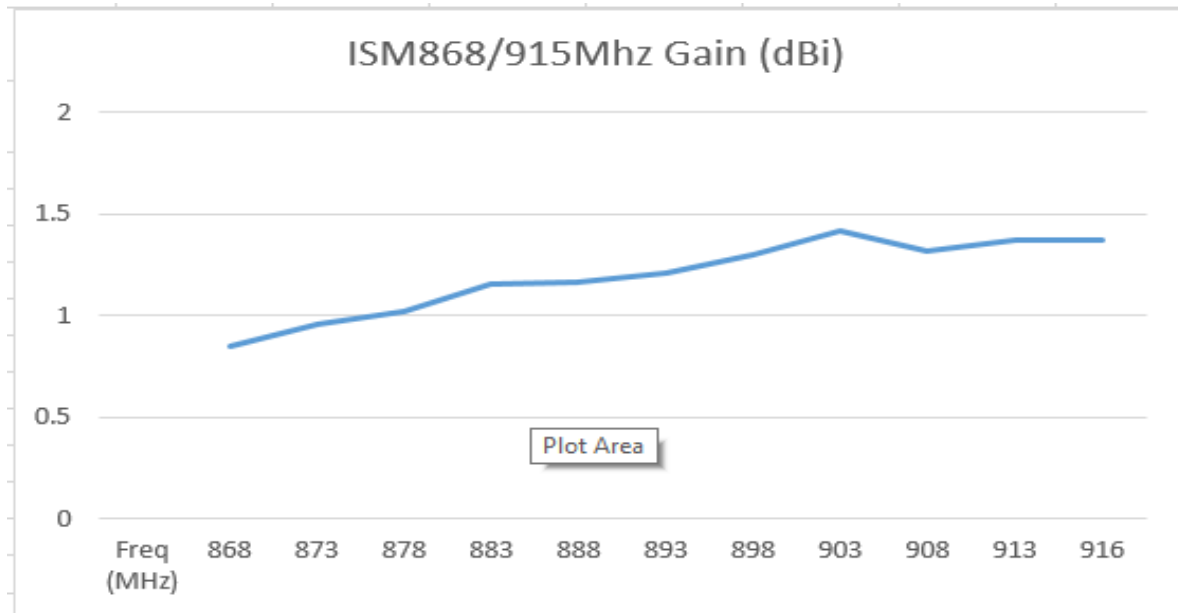
CHARTS

Efficiency(%)



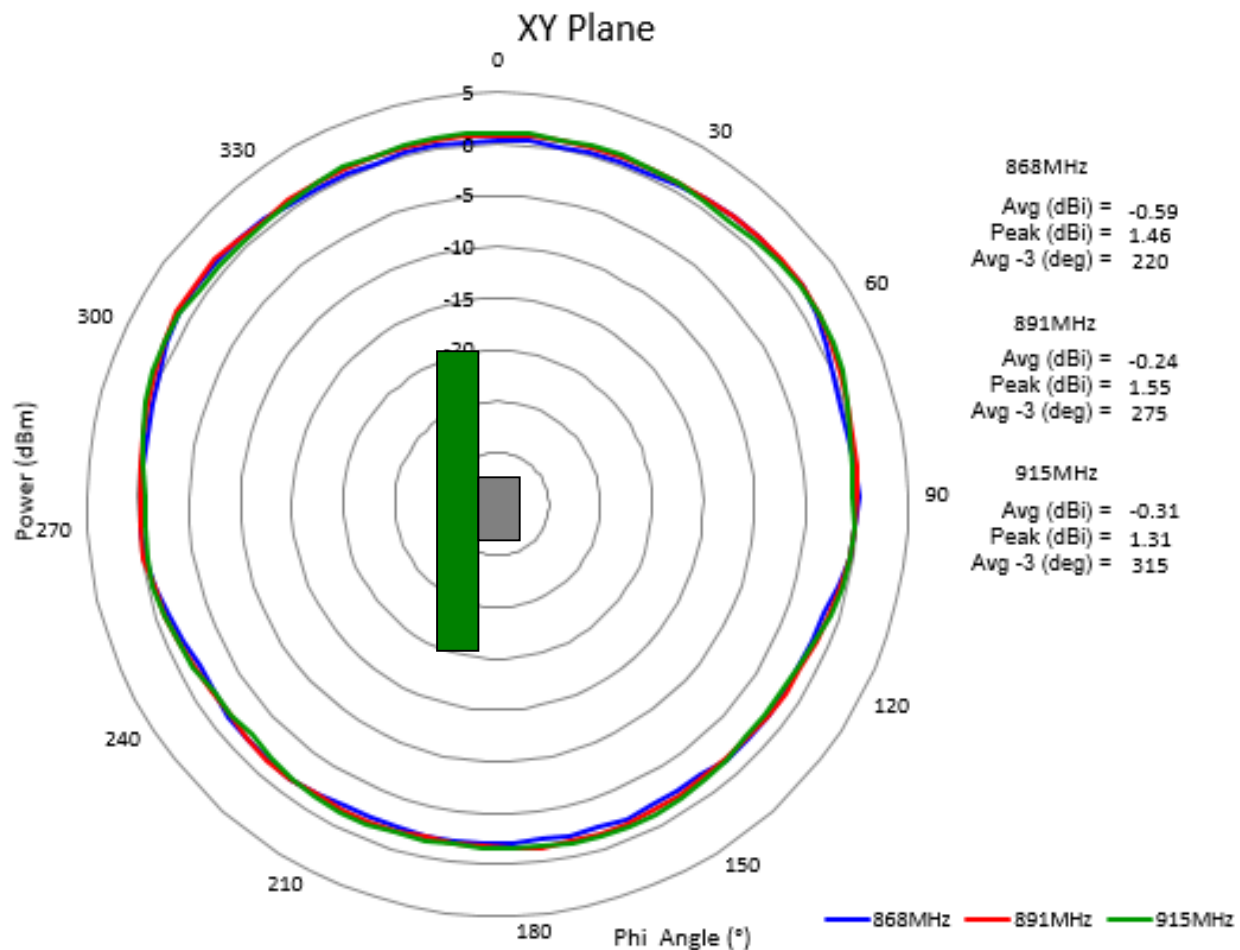
CHARTS

Gain (dBi)



CHARTS

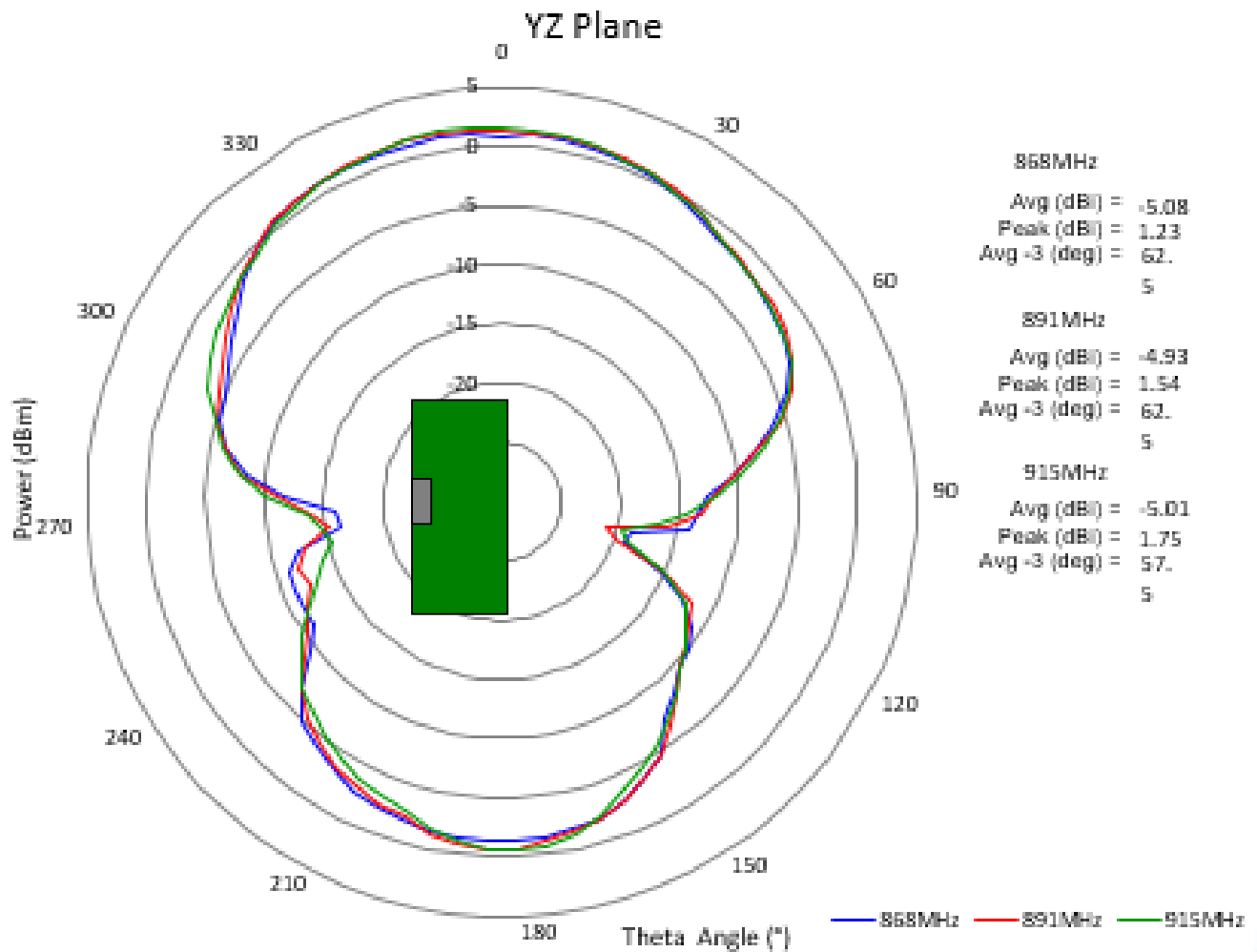
Typical free space radiation pattern ISM868/915MHz X-Y plane



CHARTS

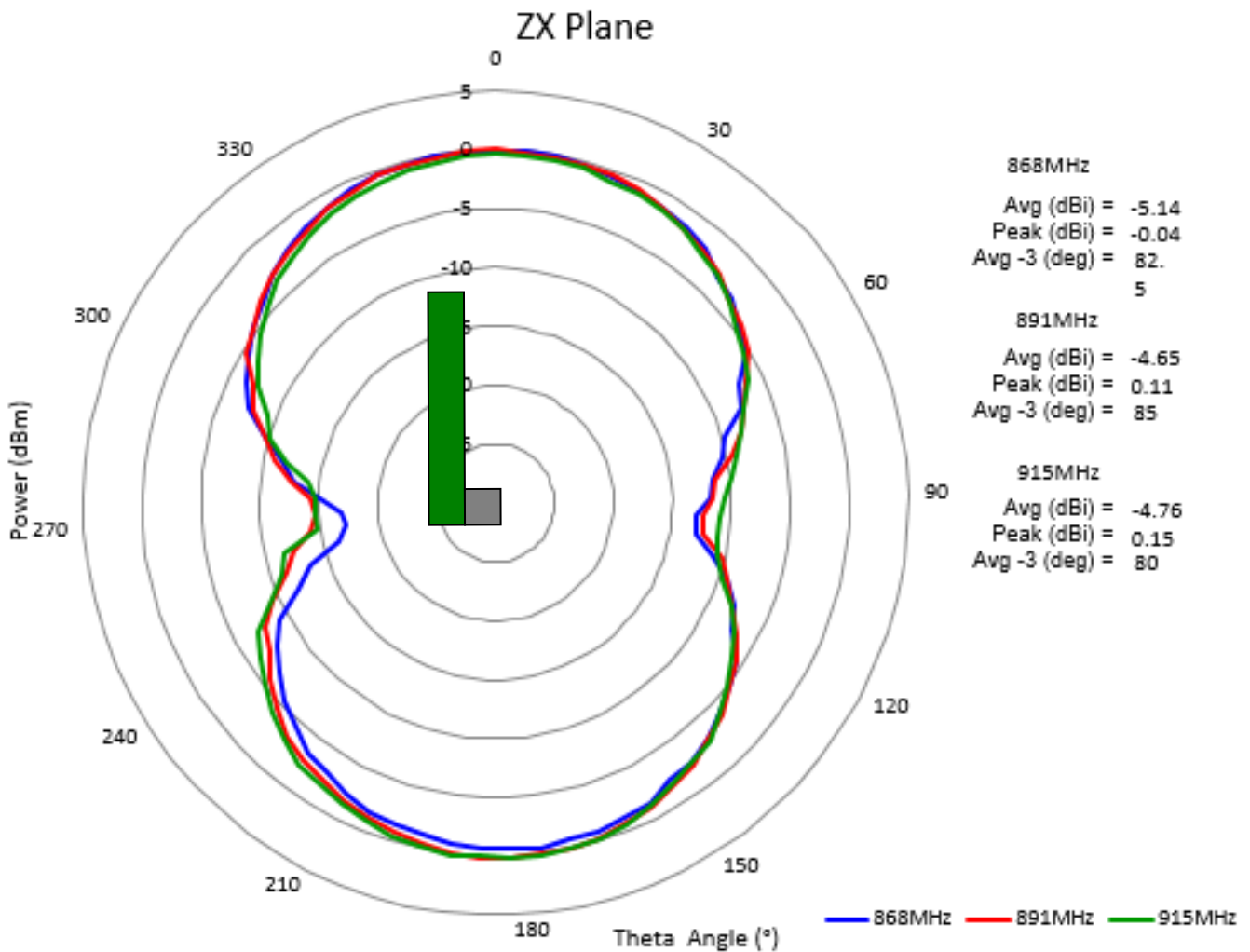
ISM868/915MHz

Y-Z plane



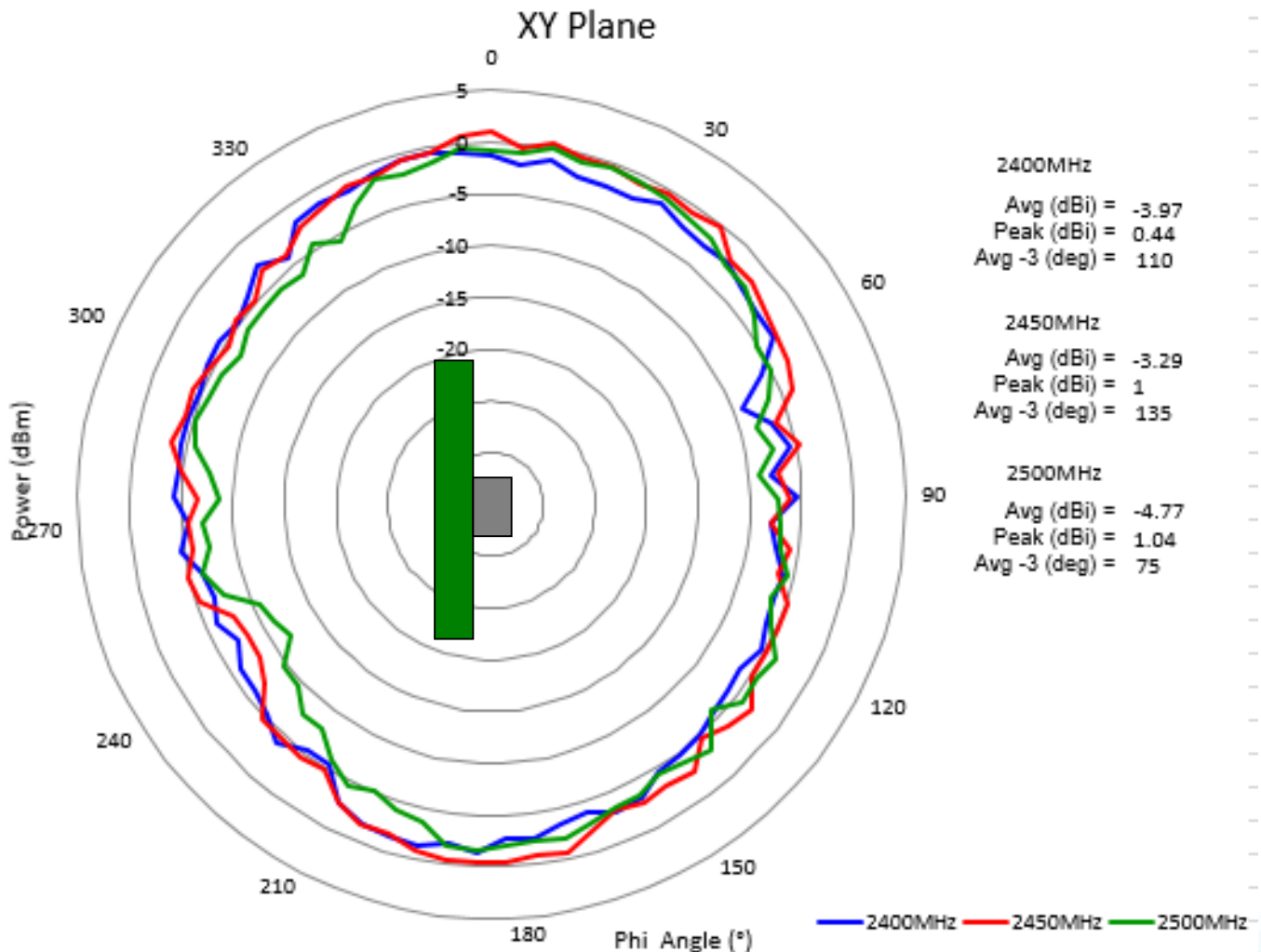
CHARTS

ISM868/915MHz X-Z plane



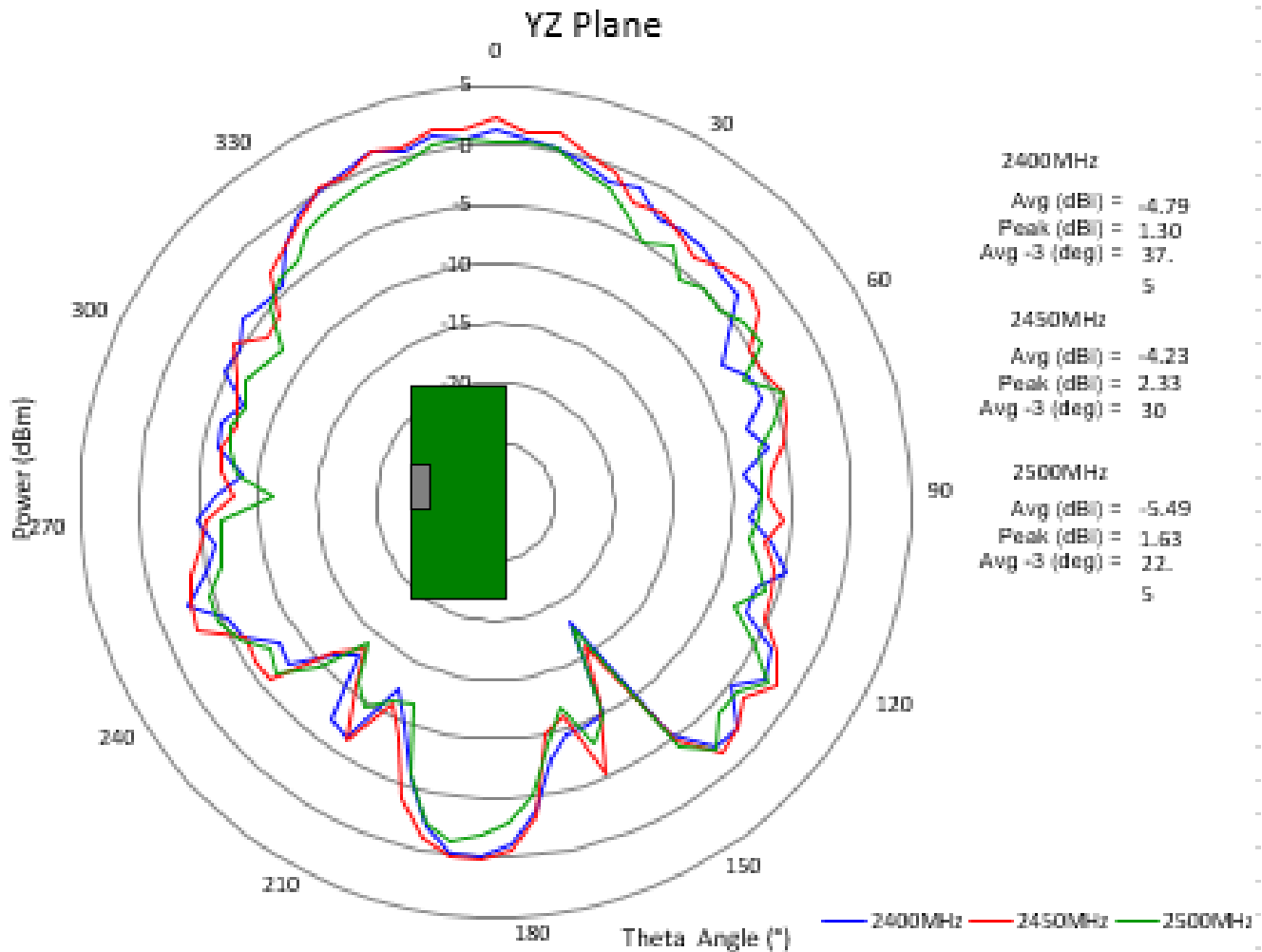
CHARTS

Typical free space radiation pattern
ISM2.4GHz
X-Y plane



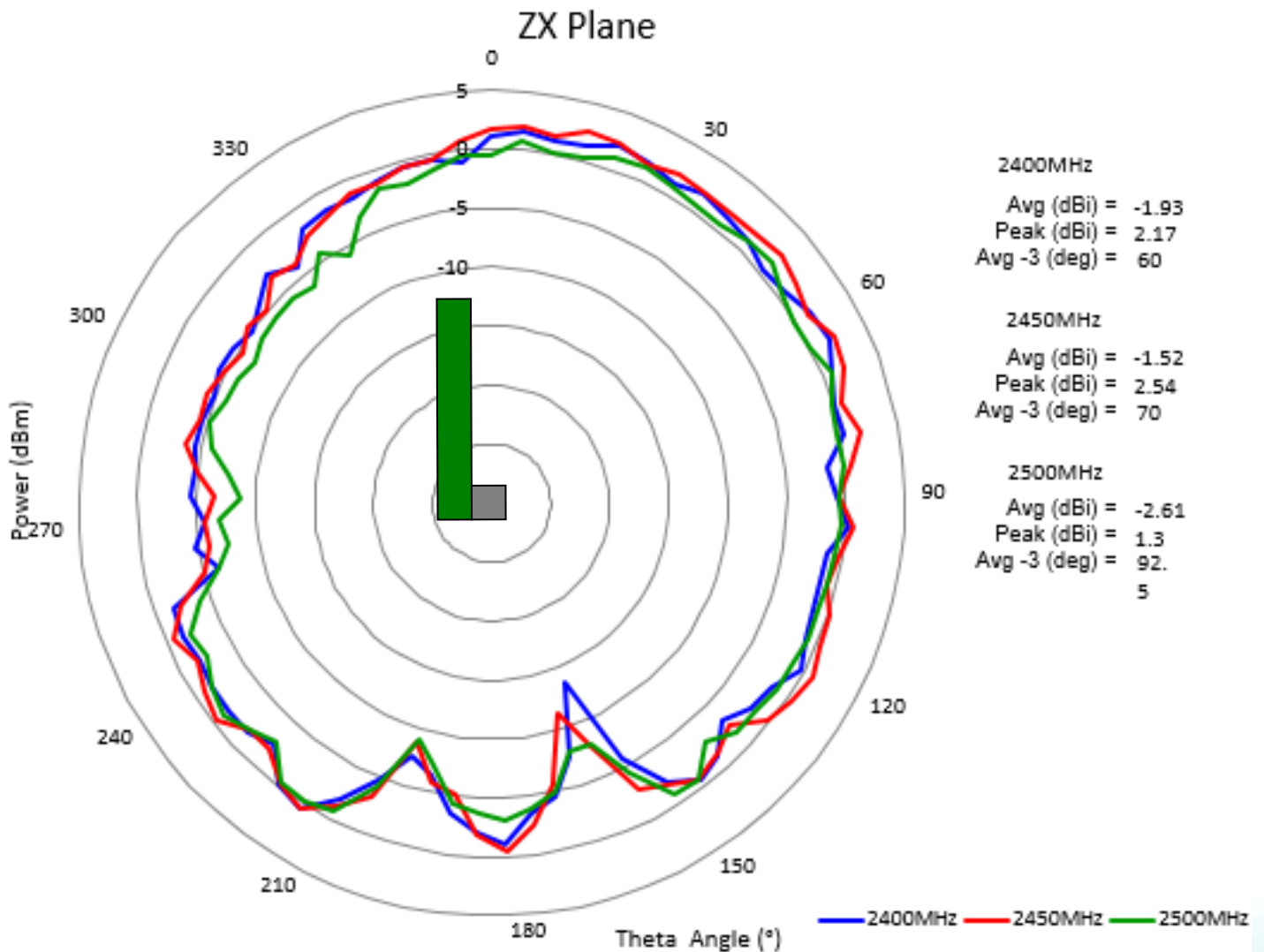
CHARTS

ISM 2.4GHz Y-Z Plane



CHARTS

ISM 2.4GHz X-Z Plane



PACKAGING

Taping package
1000PCS/Reel
3000PCS/Small box
6000PCS/Carton box



单击下面可查看定价，库存，交付和生命周期等信息

[>>Pulse\(普思\)](#)