

## CX4024NL

- RF SPLITTER, 2-WAY
- 5–1000MHz
- IMPEDANCE = 75 OHMS
- SURFACE MOUNT

### NOTES: UNLESS OTHERWISE SPECIFIED

1. OPERATING TEMPERATURE:  $-40^{\circ}\text{C}$  TO  $+85^{\circ}\text{C}$
2. STORAGE TEMPERATURE:  $-50^{\circ}\text{C}$  TO  $+125^{\circ}\text{C}$
3. COMPLIANCE TO J-STD:
  - J-STD-002: SOLDERABILITY AT REFLOW PEAK TEMPERATURE OF  $245^{\circ}\text{C}$
  - J-STD-020: MSL 1, NO MOISTURE SENSITIVE
  - J-STD-075: R6,  $250^{\circ}\text{C}$  MAXIMUM THROUGH REFLOW SOLDER
4. DIMENSIONS ARE IN INCHES.
  - TOLERANCE:
    - .XX  $\pm 0.01$
    - .XXX  $\pm 0.005$
5. OPTIONAL TAPE & REEL PACKAGING CAN BE ORDERED BY ADDING A "T" SUFFIX TO THE PART NUMBER. ie: CX4024NLT

### ELECTRICAL SPECIFICATIONS: $\odot 25^{\circ}\text{C}$

#### INSERTION:

FREQUENCY	
5–500 MHz	–20 dB MIN
501–870 MHz	–18 dB MIN
871–1000 MHz	–15 dB MIN

#### RETURN LOSS:

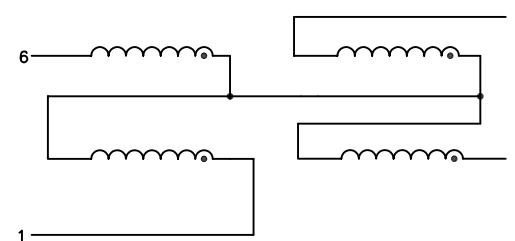
FREQUENCY	
5–500 MHz	–25 dB MIN
501–870 MHz	–20 dB MIN
871–1000 MHz	–15 dB MIN

#### INSERTION LOSS:

FREQUENCY	
5–500 MHz	–3.8 dB MAX
501–870 MHz	–4.0 dB MAX
871–1000 MHz	–4.3 dB MAX

#### AMPLITUDE UNBALANCE:

FREQUENCY	
5–500 MHz	–0.1 dB MAX
501–870 MHz	–0.2 dB MAX
871–1000 MHz	–0.3 dB MAX



SCHEMATIC

© Copyright, 2014. Pulse Electronics Corp. All rights reserved. Pulse confidential & proprietary. (04/14/2014)

PRODUCT DESCRIPTION:

SPLTR, RF, 2-WAY, 0-DEG; 5–1000MHz

SHEET:

1 OF 2

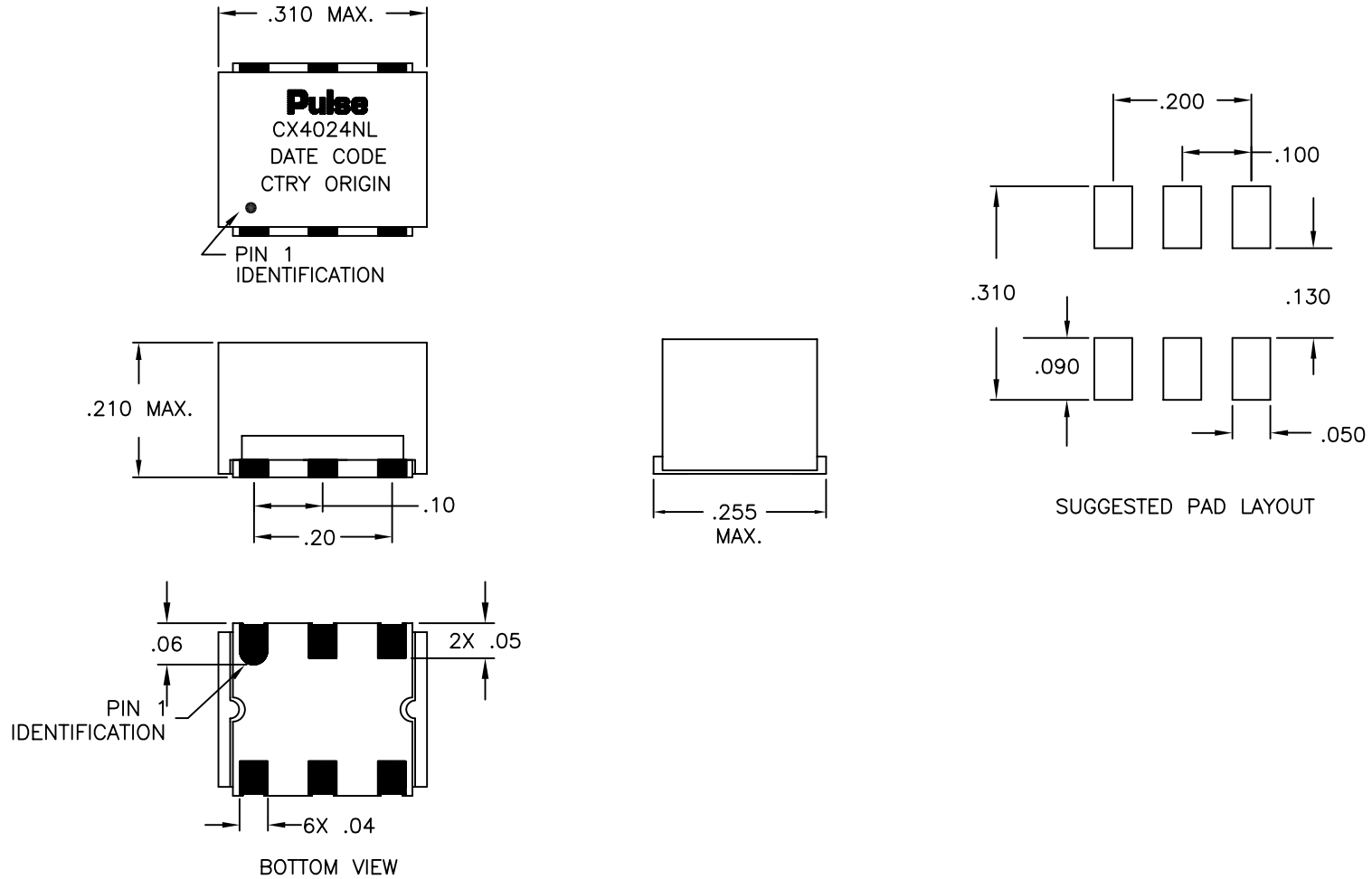
PART NO.

CX4024NL

DATASHEET REV.

M16

**MECHANICAL SPECIFICATIONS:**



© Copyright, 2014. Pulse Electronics Corp. All rights reserved. Pulse confidential & proprietary. (04/14/2014)

PRODUCT DESCRIPTION:		SHEET:	PART NO.	DATASHEET REV.
SPLTR, RF, 2-WAY, 0-DEG; 5-1000MHz		2 OF 2	CX4024NL	M16

单击下面可查看定价，库存，交付和生命周期等信息

[>>Pulse\(普思\)](#)