

Description: 1608 2.4G&5GHz Diplexer

PART NUMBER: DPX1608LL85R2455A

Features:

- Compact size : 1.6x0.8x0.6mm
- RoHS compliant

Applications:

- WLAN, 802.11a/b/g/n
- ISM Band

ELECTRICAL SPECIFICATIONS

DESCRIPTION	VALUE	
Pass Band	Low Band	High Band
	2400~2500MHz	4900~6000MHz
Insertion loss	0.7dB (Max) at 25°C	0.8dB (Max) at 25°C
Return-Loss	10.0dB(Min)	12.0dB(Min)
Attenuation	20dB(Min).@4.8~5GHz 20dB(Min).@7.2~7.5GHz	28dB(Min).@860~960MHz
		23dB(Min).@1545~1605MHz
		23dB(Min).@1710~1990GHz
		28dB(Min).@2.17GHz
		8dB(Min).@8.1GHz
		15dB(Min).@8.82~9.8GHz
		27dB(Min).@9.8~11.8GHz
Isolation	Middle Band to High Band: 20dB (Min). @4.9~5.95GHz	
Operating Temperature	-40 ~ 85°C	
Dimension	1.6 x 0.8 x0.6mm	

In the effort to improve our products, we reserve the right to make changes judged to be necessary.

CONFIDENTIAL AND PROPRIETARY INFORMATION

This document contains confidential and proprietary information of Pulse Electronics, Inc. (Pulse) and is protected by copyright, trade secret and other state and federal laws. Its receipt or possession does not convey any rights to reproduce, disclose its contents, or to manufacture, use or sell anything it may describe. Reproduction, disclosure or use without specific written authorization of Pulse is strictly forbidden.

For more information:



Pulse Worldwide Headquarters
15255 Innovation Drive #100
San Diego, CA 92128
USA
Tel:1-858-674-8100

Pulse/Larsen Antennas
18110 SE 34th St Bldg 2 Suite 250
Vancouver, WA 98683
USA
Tel: 1-360-944-7551

Europe Headquarters
Pulse GmbH & Do, KG
Zeppelinstrasse 15
Herrenberg, Germany

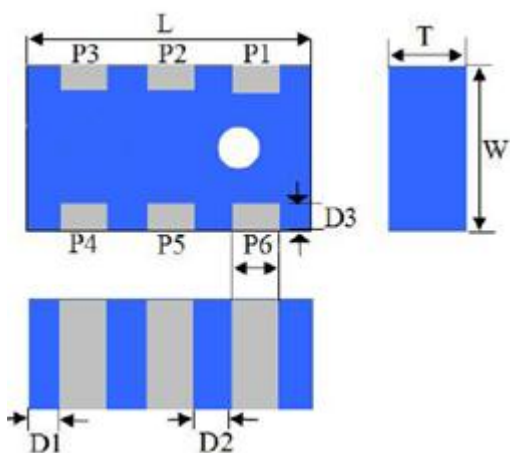
Pulse (Suzhou) Wireless Products Co, Inc.
99 Huo Ju Road(#29 Bldg,4th Phase
Suzhou New District
Jiangsu Province, Suzhou 215009 PR China
Tel: 86 512 6807 9998

Description: 1608 2.4G&5GHz Diplexer

PART NUMBER: DPX1608LL85R2455A

MECHANICAL DIMENSION

Outline



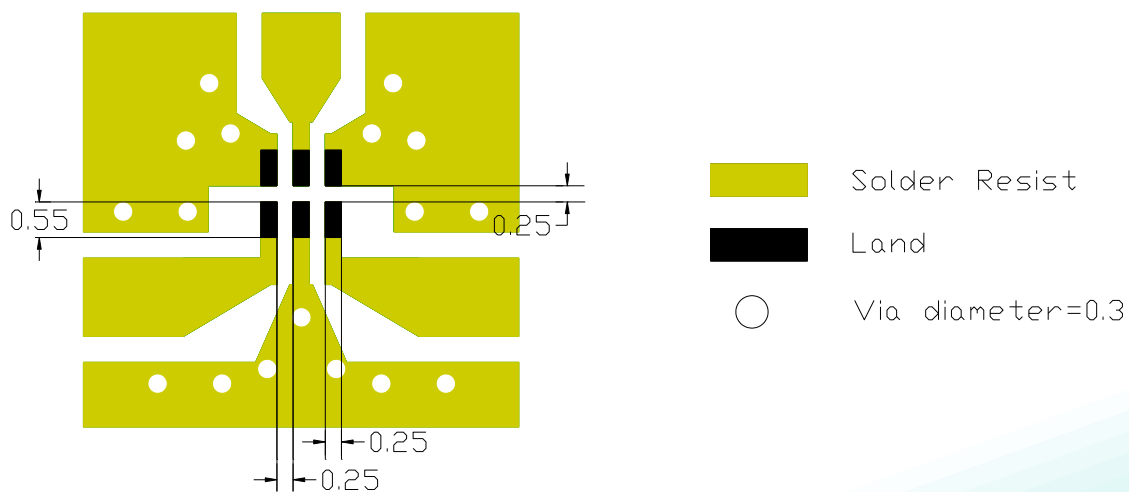
Termination

Terminal name	Function
P1	High band
P2	GND
P3	Low band
P4	GND
P5	Common
P6	GND

Mechanical

	Dimension
L (mm)	1.60±0.15
W (mm)	0.80±0.15
T (mm)	0.60±0.15
P1 (mm)	0.20±0.15
P2 (mm)	0.20±0.15
P3 (mm)	0.20±0.15
P4 (mm)	0.20±0.15
P5 (mm)	0.20±0.15
P6 (mm)	0.20±0.15
D1 (mm)	0.20±0.15
D2 (mm)	0.30±0.10
D3 (mm)	0.15±0.10

Reference design of EVB



Line width should be designed to match 50Ω characteristic impedance, depending on PCB material and thickness.

In the effort to improve our products, we reserve the right to make changes judged to be necessary.

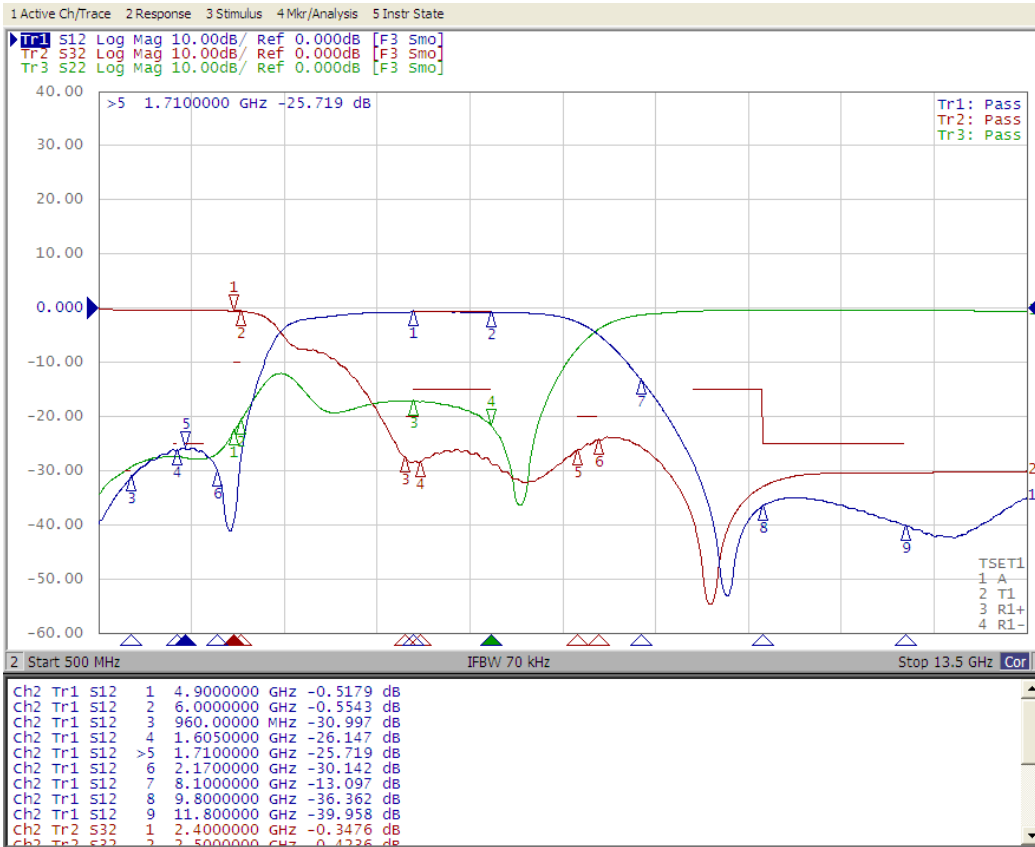
CONFIDENTIAL AND PROPRIETARY INFORMATION

This document contains confidential and proprietary information of Pulse Electronics, Inc. (Pulse) and is protected by copyright, trade secret and other state and federal laws. Its receipt or possession does not convey any rights to reproduce, disclose its contents, or to manufacture, use or sell anything it may describe. Reproduction, disclosure or use without specific written authorization of Pulse is strictly forbidden.

Description: 1608 2.4G&5GHz Diplexer

PART NUMBER: DPX1608LL85R2455A

ELECTRICAL PERFORMANCES



- Measured on Agilent E5071C Network Analyzer
- Common port: Port 2 (Return loss S22)
- Low band port: Port 3 (Low band insertion loss S32, and attenuation at high band)
- High band port: Port 1 (High band insertion loss S12, and attenuation at low band)

Frequency Characteristics

In the effort to improve our products, we reserve the right to make changes judged to be necessary.

CONFIDENTIAL AND PROPRIETARY INFORMATION

This document contains confidential and proprietary information of Pulse Electronics, Inc. (Pulse) and is protected by copyright, trade secret and other state and federal laws. Its receipt or possession does not convey any rights to reproduce, disclose its contents, or to manufacture, use or sell anything it may describe. Reproduction, disclosure or use without specific written authorization of Pulse is strictly forbidden.

Description: 1608 2.4G&5GHz Diplexer

PART NUMBER: DPX1608LL85R2455A

REVISION HISTORY

Revision	Date	Description
Version 1	Set. 30, 2020	- New issue

单击下面可查看定价，库存，交付和生命周期等信息

[>>Pulse\(普思\)](#)