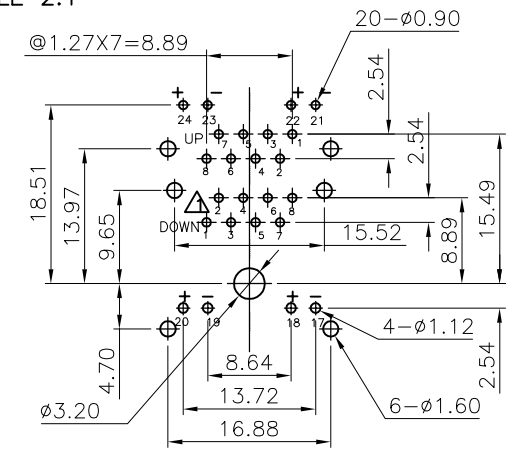
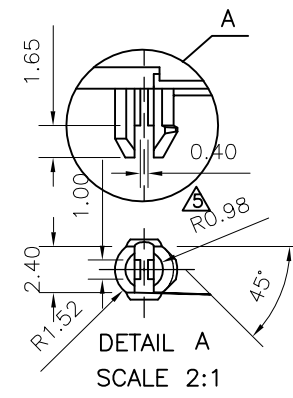


REVISION RECORD				
REV	ECO	DESCRIPTION	DRFT	CHKD
△		DRAWING MODIFY	IRONDR	
		ADD NEW P/N	11/28/02	
△		DRAWING MODIFY	JAKE	
		ADD NEW P/N	08/07/03	
△		DRAWING MODIFY	JAKE	
		ADD NEW P/N	08/23/03	
△		DRAWING MODIFY	JAKE	
		ADD NEW P/N	10/22/03	
△		DRAWING MODIFY	PETERS	
		ADD NEW P/N	10/28/04	
△		DRAWING MODIFY	PETERS	
		ADD NEW P/N	02/28/05	
△		ERASE P/N	YANGLAN	
			05/26/05	



**NOTES:**

**ELECTRICAL:**

- VOLTAGE RATING : 125 VAC RMS.
- CURRENT RATING : 1.5 AMP.
- CONTACT RESISTANCE : 50 MILLIOHMS MAX.
- INSULATION RESISTANCE: 1000 MEGOHMS MIN @ 500 VDC.
- DIELECTRIC STRENGTH : 1000 VAC RMS 60Hz, 1MIN.

**MECHANICAL:**

- HOUSING MATERIAL : GLASS FILLED POLYESTER UL94V-0.
- CONTACT MATERIAL : PHOSPHOR BRONZE Ø0.46mm.
- PLATING : 1: CONTACT AREA- SELECTIVE GOLD PLATING.  
2: TAILS- 150u" TIN-LEAD MIN OVER 50u" NICKEL.
- OPERATING LIFE : 750 CYCLES MIN.
- PCB RETENTION PRE-SOLDER : 1 LB MIN.
- PCB RETENTION POST-SOLDER: 10 LBS MIN.
- LED COLOR : GREEN

**ENVIRONMENTAL:**

- STORAGE : -40°C TO +85°C.
- OPERATION: 0°C TO 70°C.

MATES WITH MODULAR PLUG CONFORMING TO FCC PART 68, SUBPART F.

W/ TIN NUMBER: E5J88-XXLXFX

- A-LED1:GREEN, LED2:GREEN
  - B-LED1:GREEN, LED2:ORANGE
  - C-LED1:GREEN, LED2:YELLOW
  - L-LED1:YELLOW, LED2:GREEN
  - △D-LED1:G+R, LED2:G+R
  - △F-LED1:ORANGE, LED2:GREEN
- 1- 3u" 2- 6u" 3-15u"
  - 4-30u" 5-50u"
  - 0- W/O "FRE" LOGO
  - 2- W/ "FRE" LOGO
  - △3- W/ "FRE" LOGO A05-0130
  - 1- NO TAB △
  - 4- TOP TABS & SIDE TABS

DETACHED LISTS	← MM (INCH) →	DFTO LUSHENG DATE 12/13/01	FULL RISE ELECTRONIC CO., LTD	
	TOLERANCES EXCEPT AS NOTED	CHKD JAKE DATE 2005/5/28		
	MM	MFO DATE	TITLE RJ45(LED) STACKED GANGED JACK, 2X1	
	.0 ±0.20 ±	APPVILLUSHENG DATE 2005/5/28		
.00 ±0.15 ±	MATERIAL :	DRAWING NO. GE5J3021		
.000 ±0.075 ±	ANGLES ±	/PART NO. SEE NOTE		
THIRD ANGLE PROJECTION	FINISH :	SCALE : 5:3	DO NOT SCALE DRAWING	SHEET 1 OF 1
	QT*Y :			SIZE REV A3 7 05/26/05

单击下面可查看定价，库存，交付和生命周期等信息

[>>Pulse\(普思\)](#)