

Description: 1608 LTE Coupler

PART NUMBER: CPL1608LL12RWHEXA

Features:

- Compact size : 1.60x0.80x0.60mm
- RoHS compliant

Applications:

- WWAN Hexa-band
- LTE (0.6-2.7GHz)

ELECTRICAL SPECIFICATIONS

DESCRIPTION	Value		
Pass Band	698-960 MHz	1425-2170 MHz	2300-2700 MHz
Insertion Loss (dB)	0.15 (Max.) at 25°C	0.25 (Max.) at 25°C	0.3 (Max.) at 25°C
V.S.W.R	1.5 (Max)		
Coupling (dB)	23 ~ 28	21.5 ~ 26.5	22.5 ~ 27.5
Isolation (dB)	42 min.	38 min.	35 min.
Operating Temperature	-40 ~ +85°C		

In the effort to improve our products, we reserve the right to make changes judged to be necessary.

CONFIDENTIAL AND PROPRIETARY INFORMATION

This document contains confidential and proprietary information of Pulse Electronics, Inc. (Pulse) and is protected by copyright, trade secret and other state and federal laws. Its receipt or possession does not convey any rights to reproduce, disclose its contents, or to manufacture, use or sell anything it may describe. Reproduction, disclosure or use without specific written authorization of Pulse is strictly forbidden.

For more information:



Pulse Worldwide Headquarters
15255 Innovation Drive #100
San Diego, CA 92128
USA
Tel:1-858-674-8100

Pulse/Larsen Antennas
18110 SE 34th St Bldg 2 Suite 250
Vancouver, WA 98683
USA
Tel: 1-360-944-7551

Europe Headquarters
Pulse GmbH & Do, KG
Zeppelinstrasse 15
Herrenberg, Germany

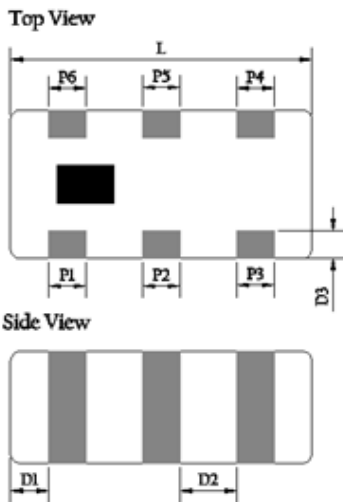
Pulse (Suzhou) Wireless Products Co, Inc.
99 Huo Ju Road(#29 Bldg,4th Phase
Suzhou New District
Jiangsu Province, Suzhou 215009 PR China
Tel: 86 512 6807 9998

Description: 1608 LTE Coupler

PART NUMBER: CPL1608LL12RWHEXA

MECHANICAL DIMENSION

Outline



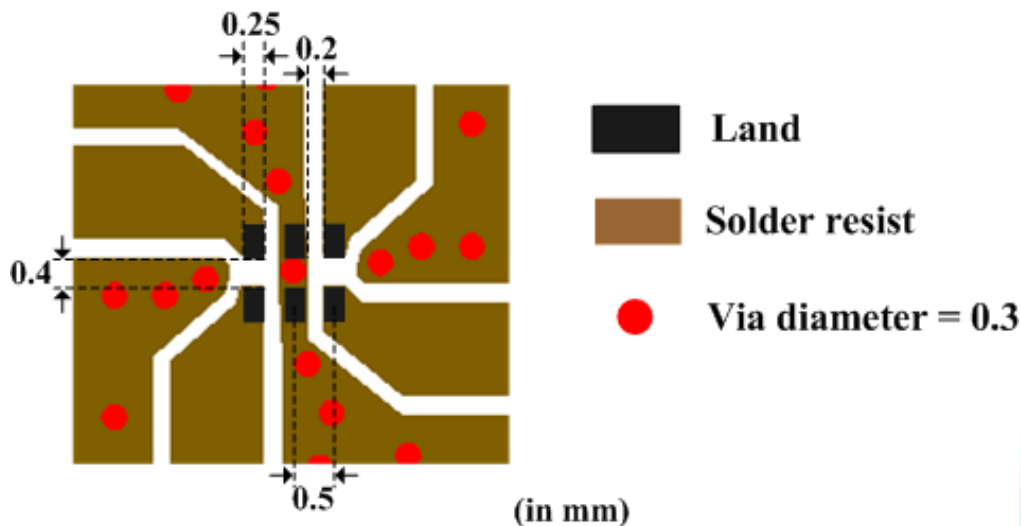
Termination

Terminal name	function
P1	Input
P2	GND
P3	Output
P4	50-Ω Term
P5	GND
P6	Coupling

Mechanical

	Dimension
L (mm)	1.60±0.15
W (mm)	0.80±0.15
T (mm)	0.60±0.15
P1 (mm)	0.20±0.15
P2 (mm)	0.20±0.15
P3 (mm)	0.20±0.15
P4 (mm)	0.20±0.15
P5 (mm)	0.20±0.15
P6 (mm)	0.20±0.15
D1 (mm)	0.20±0.15
D2 (mm)	0.30±0.10
D3 (mm)	0.15±0.10

Reference design of EVB

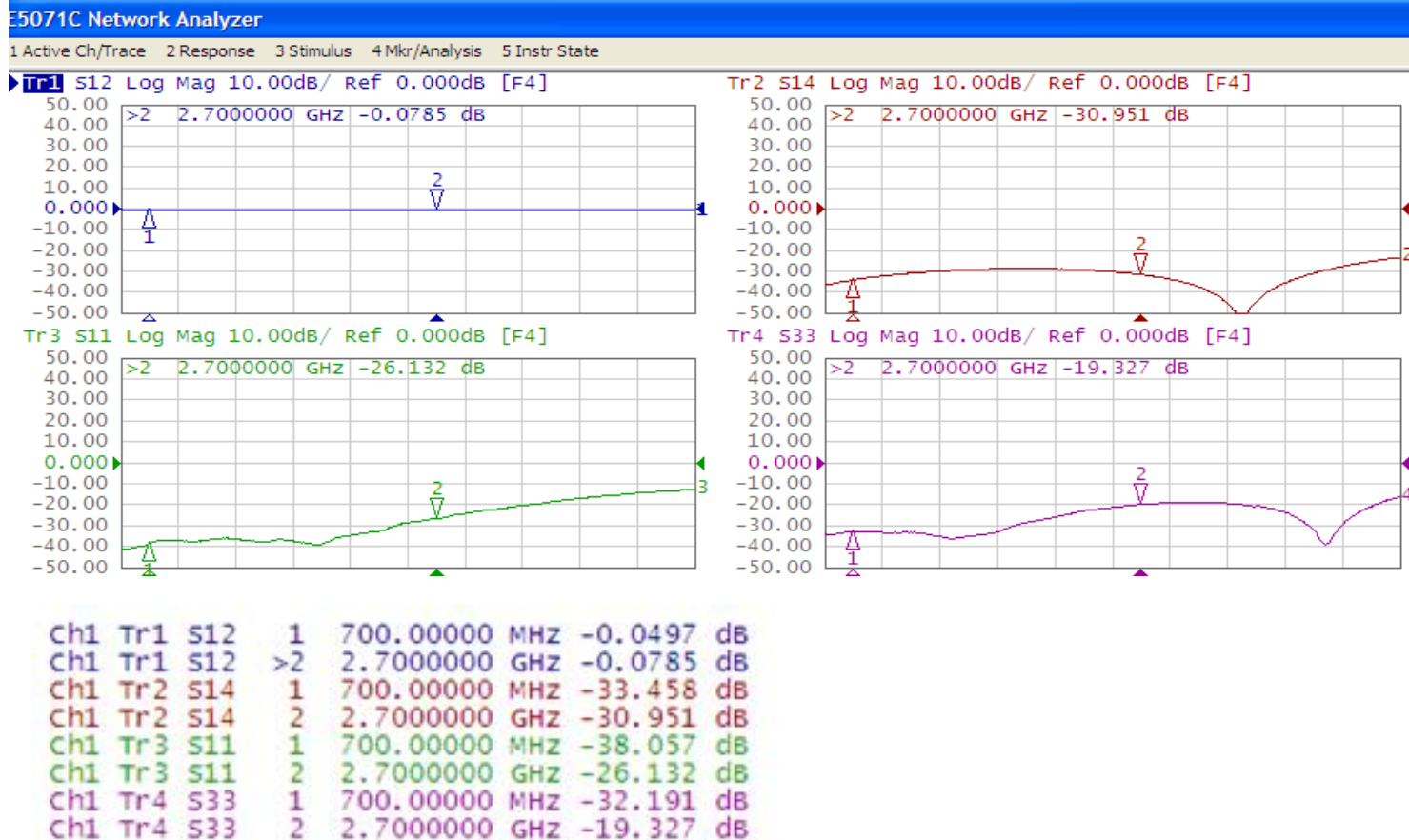


•Line width should be designed to match 50Ω characteristic impedance, depending on PCB

Description: 1608 LTE Coupler

PART NUMBER: CPL1608LL12RWHEXA

ELECTRICAL PERFORMANCES



- Measured on Agilent E5071C Network Analyzer
- Input port: Port 1 (Return loss: S11)
- Output port: Port 2 (Insertion loss: S21)
- Coupling port: Port 4 (Coupling: S41)
- 50 ohm terminal port: Port 3 (Isolation: S31)

Frequency Characteristics

In the effort to improve our products, we reserve the right to make changes judged to be necessary.

CONFIDENTIAL AND PROPRIETARY INFORMATION

This document contains confidential and proprietary information of Pulse Electronics, Inc. (Pulse) and is protected by copyright, trade secret and other state and federal laws. Its receipt or possession does not convey any rights to reproduce, disclose its contents, or to manufacture, use or sell anything it may describe. Reproduction, disclosure or use without specific written authorization of Pulse is strictly forbidden.

Description: 1608 LTE Coupler

PART NUMBER: CPL1608LL12RWHEXA

REVISION HISTORY

Revision	Date	Description
Version 1	Nov. 18, 2020	- New issue

单击下面可查看定价，库存，交付和生命周期等信息

[>>Pulse\(普思\)](#)