


NOTES: UNLESS OTHERWISE SPECIFIED

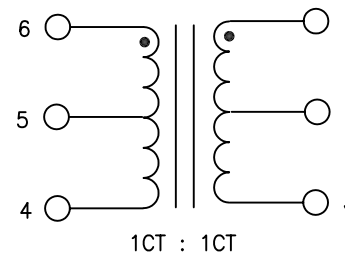
1.

NOTICE:	THIS IS A RoHS COMPLIANT COMPONENT/PRODUCT. ALL ENGINEERING CHANGES MUST HAVE PRIOR APPROVAL BY THE DESIGN CENTER.
RoHS 	

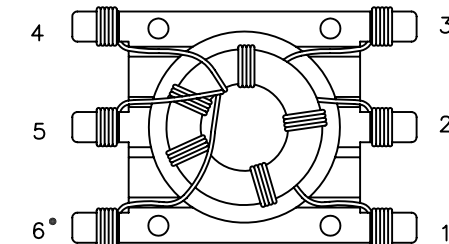
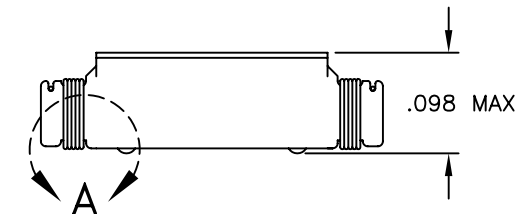
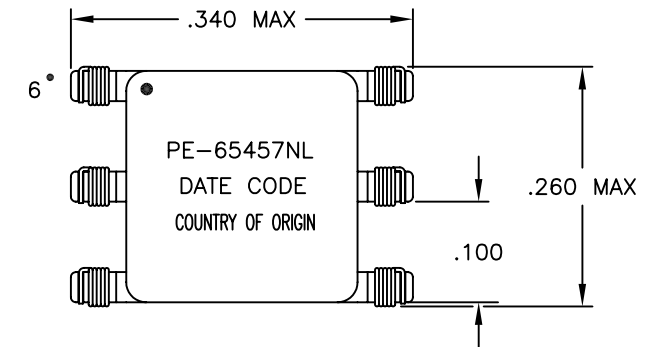
2. PLASTIC: THERMAL PLASTIC MATERIAL WITH FLAMMABILITY RATING UL 94V-0 OR BETTER.
3. SOLDERABILITY: CONFORMS TO ANSI/J-STD-002, 245°C REFLOW PEAK TEMPERATURE PER IPC/EIA J-STD-003A.
4. OPERATING TEMPERATURE: 0°C TO +70°C
5. STORAGE TEMPERATURE: -20°C TO +125°C
6. JEDEC MOISTURE: LEVEL 1.
7. DIMENSIONS ARE IN INCHES, TOLERANCES:  
.XX = ±.01 .XXX = ±.005

ELECTRICAL CHARACTERISTICS AT +25°C UNLESS OTHERWISE SPECIFIED  
(FOR REFERENCE ONLY. USED FOR CUSTOMER INFORMATION.)

PARAMETER	SPECIFICATIONS
OPERATING TEMP	0°C - 70°C
URNS RATIO	1 : 1 ±2%
POLARITY	PER SCHEMATIC
COUPLING CAPACITANCE (1-3) TO (6-4)	15 pF MAX ( AT 100 KHz 20 mVRMS)
LEAKAGE INDUCTANCE (6-4) WITH (1-3) SHORTED	.18 uH MAX (AT 100KHz 20mVRMS)
PRIMARY INDUCTANCE (1-3), (6-4)	80 uH MIN (AT 100KHz 20mVRMS 25°C)
DC RESISTANCE (1-3), (6-4)	.2 OHM MAX
BETWEEN CHANNEL ISOLATION	700 VRMS MIN @ 60 SECONDS



SCHEMATIC



单击下面可查看定价，库存，交付和生命周期等信息

[>>Pulse\(普思\)](#)