



CONNECTING PEOPLE NOW AND IN THE FUTURE

Automotive Communications

Pulse Electronics 100Base-T1 Automotive Ethernet Common Mode Choke

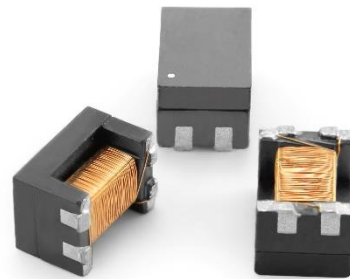
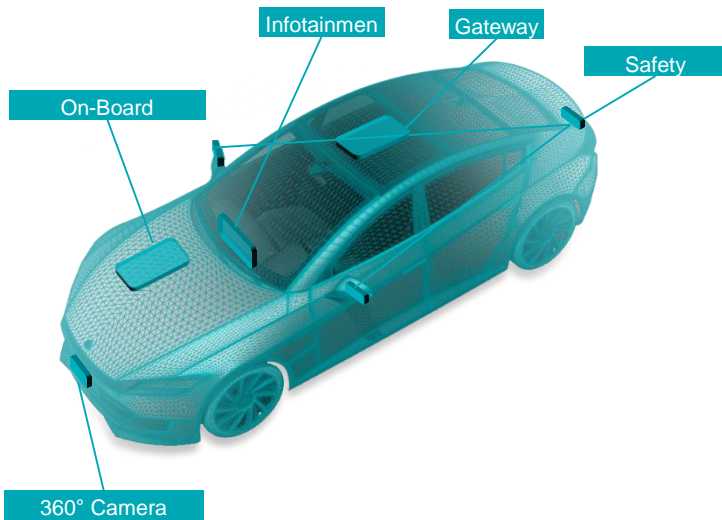
Pulse releases the AE2002 100Base-T1 common mode choke for automotive Ethernet applications. In addition to the 100Base-T1 Pulse is in process of releasing to production the 1000Base-T1 AE5002 and the 100Base-T1 Power over Data Lines (PoDL) AE3003. Pulse's parts are designed to operate from -40C up to +125C, have high reliability, high volume manufacturing, long term manufacturing support, and meet AEC-Q200 requirements.

Features and Benefits:

- Designed to meet IEEE 802.3bw
- Qualified at Marvell, Broadcom, Intel
- Meets AEC-Q200 requirements
- IATF 16949:2016 certification for 100Base-T1, 1000Base-T1, and PoDL parts in-process
- Operating Temp. from -40C to +125C
- PPAP Documentation Available

SINGLE TWISTED PAIR TECHNOLOGY:

- AE2002 100BASE-T1 CMC
- AE3003 100BASE-T1 PoDL CMC (Launching in Q2 2018)
- AE5002 1000Base-T1 CMC (Launching in Q1 2018)



AE2002 – 100Base-T1

Applications:

Infotainment, Advanced Driver Assist Systems (ADAS)
Body Control, Camera/Radar, Gateways, Backbone
Diagnostics

[Datasheets](#)

[Order Samples](#)

[BUY NOW](#) [Buy Now](#)



单击下面可查看定价，库存，交付和生命周期等信息

[>>Pulse\(普思\)](#)