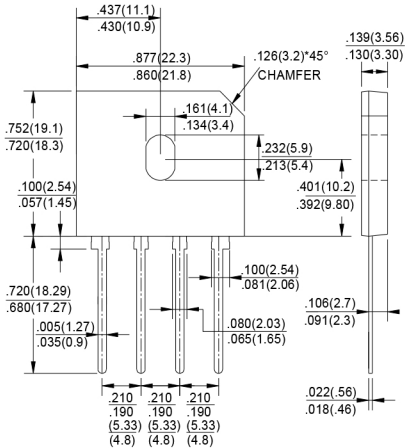


## GBU



Dimensions in inches and (millimeters)

## FEATURES

Ideal for printed circuit boards  
 Reliable low cost construction technique  
 results in inexpensive product  
 High temperature soldering guaranteed:  
 260°C/10 seconds/0.375" (9.5mm) lead length  
 at 5 lbs.,(2.3kg) tension

## MECHANICAL DATA

**Case:** Moulded plastic  
**Lead:** Solder plated  
**Mounting position:** Any

## MAXIMUM RATINGS AND ELECTRICAL CHARACTERISTICS

Rating at 25 °C ambient temperature unless otherwise specified.

Single phase, half wave, 60Hz, resistive or inductive load.

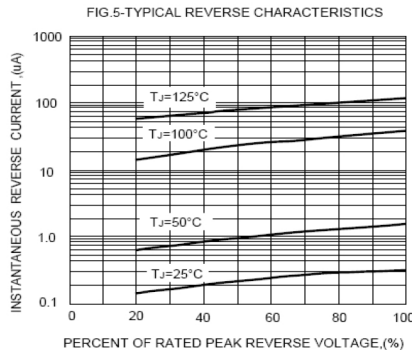
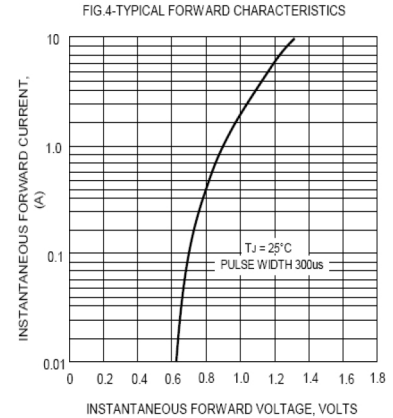
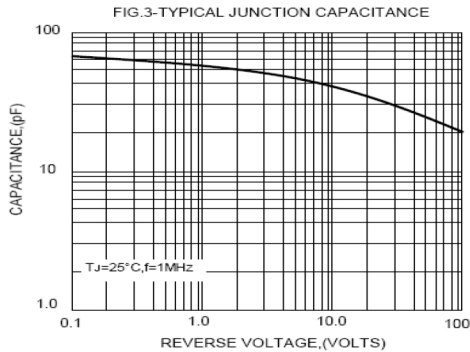
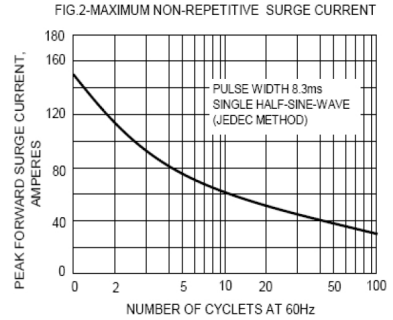
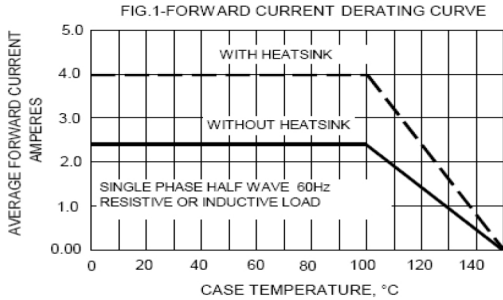
For capacitive load, derate current by 20%

| CHARACTERISTICS  | SYMBOL            | GBU4005 | GBU401 | GBU402 | GBU404 | GBU406      | GBU408 | GBU410 | UNIT |                  |
|--|-------------------|---------|--------|--------|--------|-------------|--------|--------|------|------------------|
| Maximum Recurrent Peak Reverse Voltage   | V <sub>RRM</sub>  | 50      | 100    | 200    | 400    | 600         | 800    | 1000   | V    |                  |
| Maximum RMS Voltage  | V <sub>RMS</sub>  | 30      | 70     | 140    | 280    | 420         | 560    | 700    | V    |                  |
| Maximum DC Blocking Voltage  | V <sub>Dc</sub>   | 50      | 100    | 200    | 400    | 600         | 800    | 1000   | V    |                  |
| Maximum Average Forward Rectified Current (with heatsink Note 2)<br>@ T <sub>c</sub> =100 (without heatsink) | I <sub>(AV)</sub> |         |        |        |        | 4.0         |        |        |      | A                |
| Peak Forward Surge Current<br>8.3ms Single Half Sine-Wave<br>Super Imposed on Rated Load (JEDEC Method)      | I <sub>FSM</sub>  |         |        |        |        | 150         |        |        |      | A                |
| Maximum Forward Voltage at 4.0A DC   | V <sub>F</sub>    |         |        |        |        | 1.1         |        |        |      | V                |
| Maximum DC Reverse Current at Rated DC Blocking Voltage @ T <sub>J</sub> =25<br>@ T <sub>J</sub> =125        | I <sub>R</sub>    |         |        |        |        | 10.0        |        |        |      | µA               |
| I <sup>2</sup> t Rating for Fusing (t<8.3ms)   | I <sup>2</sup> t  |         |        |        |        | 93          |        |        |      | A <sup>2</sup> s |
| Typical Junction Capacitance Per Element (Note1)   | C <sub>J</sub>    |         |        |        |        | 45          |        |        |      | pF               |
| Typical Thermal Resistance (Note2)   | R <sub>JC</sub>   |         |        |        |        | 2.2         |        |        |      | /W               |
| Operating Temperature Range  | T <sub>J</sub>    |         |        |        |        | -55 to +150 |        |        |      |                  |
| Storage Temperature Range  | T <sub>STG</sub>  |         |        |        |        | -55 to +150 |        |        |      |                  |

NOTES: 1.Measured at 1.0MHz and applied reverse voltage of 4.0V DC.

2.Device mounted on 50mm\*50mm\*1.6mm cu plate heatsink.

# RATINGS AND CHARACTERISTIC CURVES GBU4005 THRU GBU410



单击下面可查看定价，库存，交付和生命周期等信息

[>>RCD\(达标电子\)](#)