



SAW filters for infrastructure systems

Series/Type: B3824

The following products presented in this data sheet are being withdrawn.

Ordering Code	Substitute Product	Date of Withdrawal	Deadline Last Orders	Last Shipments
B39192B3824U810	B39192B5148U410	2013-03-08	2013-12-31	2014-03-31

For further information please contact your nearest EPCOS sales office, which will also support you in selecting a suitable substitute. The addresses of our worldwide sales network are presented at www.epcos.com/sales.

© EPCOS AG 2015. Reproduction, publication and dissemination of this publication, enclosures hereto and the information contained therein without EPCOS' prior express consent is prohibited.

EPCOS AG is a TDK Group Company.

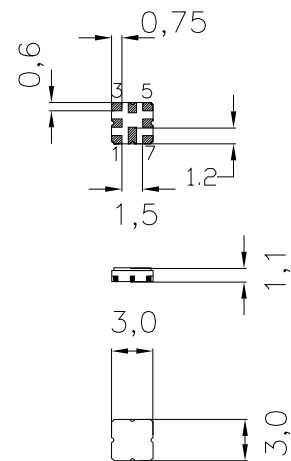
Data Sheet

 SMD ceramic package **QCC8D**
Features

- Very low loss RF filter
- Unbalanced to unbalanced or unbalanced to balanced operation
- Package for **Surface Mounted Technology (SMT)**

Terminals

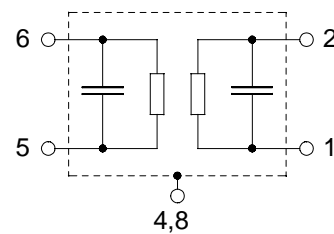
- Ni, gold-plated



Dimensions in mm, approx. weight 0,037 g

Pin configuration

- | | |
|------|------------------|
| 6 | Input |
| 5 | Input ground |
| 2 | Output, balanced |
| 1 | Output, balanced |
| 3, 7 | To be grounded |
| 4, 8 | Case - ground |



Type	Ordering code	Marking and Package according to	Packing according to
B3824	B39192-B3824-U810	C61157-A7-A72-5	F61074-V8168-Z000

Electrostatic Sensitive Device (ESD)
Maximum ratings

Operable temperature range	T	- 40/+ 85	°C
Storage temperature range	T_{stg}	- 40/+ 85	°C
DC voltage	V_{DC}	0	V
Source power	P_s	3	dBm

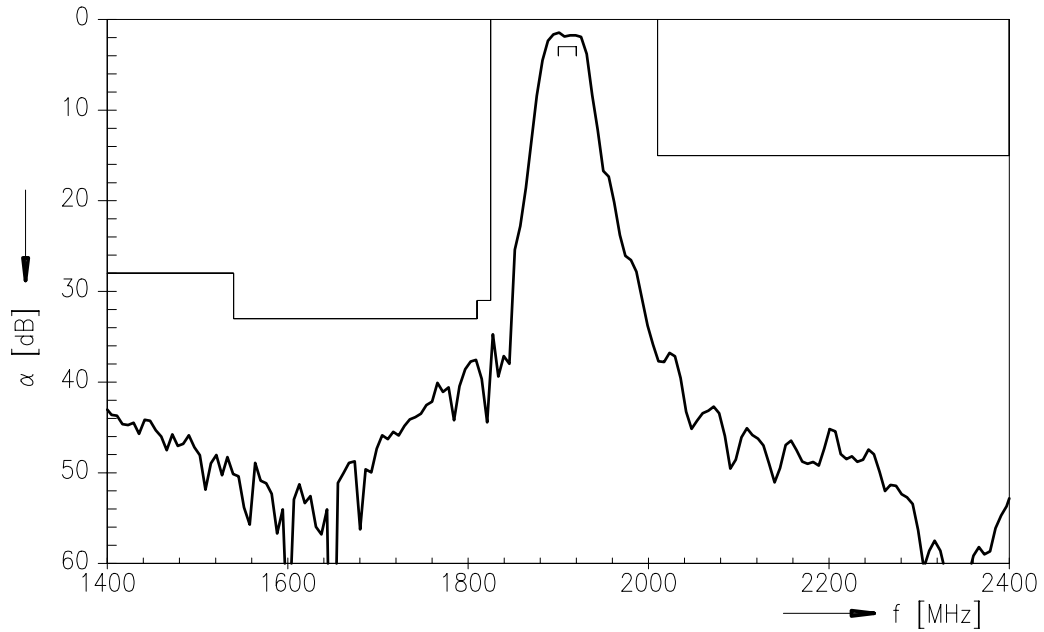
Data Sheet
Characteristics

Operating temperature range:	T_A =	-5 ... +85 °C
Terminating source impedance:	Z_S =	50 Ω unbalanced
Terminating load impedance:	Z_L =	50 Ω balanced

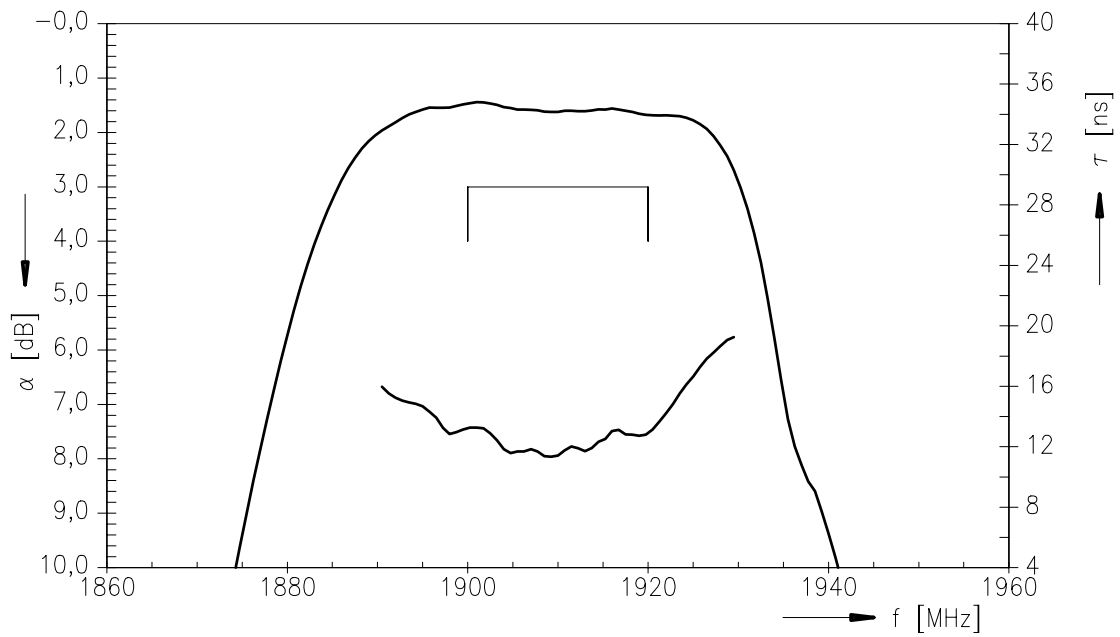
		min.	typ.	max.	
Nominal frequency	f_N	—	1910	—	MHz
Maximum insertion attenuation 1900 MHz ... 1920 MHz	α_{\max}	—	2,0	3,0	dB
Amplitude ripple in passband (p-p) over any 4 MHz within 1900 MHz ... 1920 MHz	$\Delta\alpha$	—	0,5	0,7	dB
Group delay ripple in passband (p-p) over any 4 MHz within 1900 MHz ... 1920 MHz	$\Delta\alpha$	—	2,5	4,0	ns
Attenuation	α_{abs}				
100,0 MHz ... 1540 MHz		28	33	—	dB
1540 MHz ... 1810 MHz		33	37	—	dB
1810 MHz ... 1825 MHz		31	34	—	dB
2020 MHz ... 5000 MHz		15	20	—	dB
VSWR 1900 MHz ... 1920 MHz		—	1,8:1	2,4:1	
Deviation from linear phase (p-p) over any 4 MHz within 1900 MHz ... 1920 MHz		—	0,8	1,3	°

Data Sheet

Transfer function



Transfer function (pass band)



Published by EPCOS AG**Surface Acoustic Wave Components Division, SAW MC IS****P.O. Box 80 17 09, 81617 Munich, GERMANY**

© EPCOS AG 2002. Reproduction, publication and dissemination of this brochure and the information contained therein without EPCOS' prior express consent is prohibited.

Purchase orders are subject to the General Conditions for the Supply of Products and Services of the Electrical and Electronics Industry recommended by the ZVEI (German Electrical and Electronic Manufacturers' Association), unless otherwise agreed.

This brochure replaces the previous edition.

For questions on technology, prices and delivery please contact the Sales Offices of EPCOS AG or the international Representatives.

Due to technical requirements components may contain dangerous substances. For information on the type in question please also contact one of our Sales Offices.

单击下面可查看定价，库存，交付和生命周期等信息

[>>Qualcomm-RF360](#)