



SGM6607

1.1A High Voltage Boost Converter in Small Packages

GENERAL DESCRIPTION

The SGM6607 is a high voltage switching regulator. It integrates a 40V low-side MOSFET to offer an output voltage up to 38V. It also accepts a wide input voltage range of 3V to 20V from multi-cell batteries or regulated 5V/12V power rails. A 1.2MHz switching frequency makes the use of low-profile inductors and low-value ceramic input and output capacitors available.

The device supports boost, SEPIC and some other standard switching-regulator topologies. The device regulates the output with PWM (pulse width modulation) control. This device also includes the built-in functions of output over-voltage protection, over-current limit, soft-start and thermal shutdown.

The SGM6607 is available in Green TDFN-2×2-6L and TSOT-23-6 packages and is rated over the -40°C to +85°C temperature range.

FEATURES

- **Input Voltage Range: 3V to 20V**
- **38V (MAX) High Output Voltage**
- **Integrated Switch of 1.1A**
- **Fixed Switching Frequency of 1.2MHz**
- **41V Over-Voltage Protection**
- **At 5V Input (TYP):**
 - 12V at 300mA**
 - 24V at 150mA**
- **93% Peak Efficiency**
- **500kΩ Pull-Down Resistor on EN Pin**
- **Light Load Skip-Switching**
- **Soft-Start and Thermal Shutdown Built-in Functions**
- **-40°C to +85°C Operating Temperature Range**
- **Available in Green TDFN-2×2-6L and TSOT-23-6 Packages**

APPLICATIONS

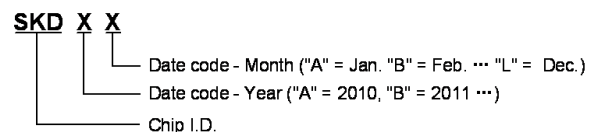
Mobile Phones
Portable Equipment

PACKAGE/ORDERING INFORMATION

MODEL	PACKAGE DESCRIPTION	SPECIFIED TEMPERATURE RANGE	ORDERING NUMBER	PACKAGE MARKING	PACKING OPTION
SGM6607	TDFN-2x2-6L	-40°C to +85°C	SGM6607YTDI6G/TR	6607 XXXX	Tape and Reel, 3000
	TSOT-23-6	-40°C to +85°C	SGM6607YTN6G/TR	SKDXX	Tape and Reel, 3000

MARKING INFORMATION

NOTE: XX = Date Code. XXXX = Date Code.



For example: SKDCD (2012, April)

Green (RoHS & HSF): SG Micro Corp defines "Green" to mean Pb-Free (RoHS compatible) and free of halogen substances. If you have additional comments or questions, please contact your SGMICRO representative directly.

ABSOLUTE MAXIMUM RATINGS

- Supply Voltage on VIN..... -0.3V to 22V
- Voltage on EN..... -0.3V to 5V
- Voltages on FB and COMP..... -0.3V to 3V
- Voltage on SW..... -0.3V to 40V
- Junction Temperature..... +150°C
- Package Thermal Resistance
- TDFN-2x2-6L, θ_{JA} 120°C/W
- TSOT-23-6, θ_{JA} 190°C/W
- Storage Temperature Range..... -65°C to +150°C
- Lead Temperature (Soldering, 10s)..... +260°C
- ESD Susceptibility
- HBM..... 4000V
- MM..... 300V

RECOMMENDED OPERATING CONDITIONS

- Operating Temperature Range..... -40°C to +85°C

OVERSTRESS CAUTION

Stresses beyond those listed may cause permanent damage to the device. Functional operation of the device at these or any other conditions beyond those indicated in the operational section of the specification is not implied. Exposure to absolute maximum rating conditions for extended periods may affect reliability.

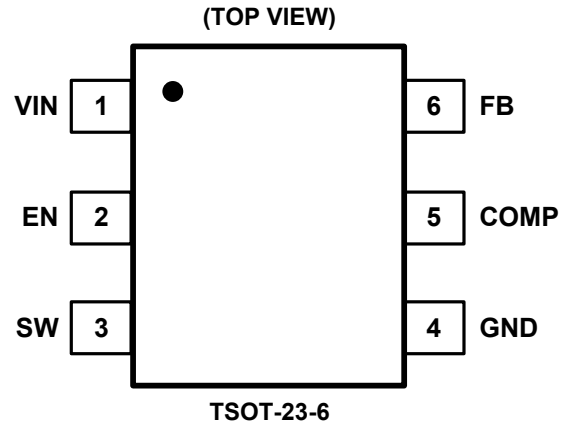
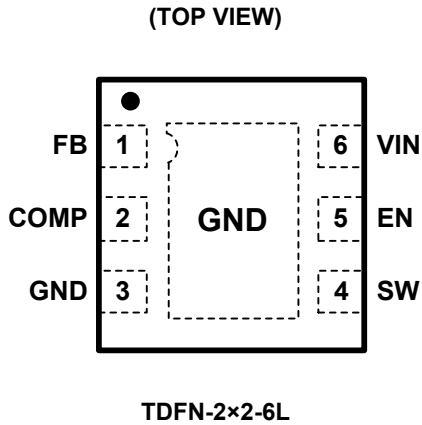
ESD SENSITIVITY CAUTION

This integrated circuit can be damaged by ESD if you don't pay attention to ESD protection. SGMICRO recommends that all integrated circuits be handled with appropriate precautions. Failure to observe proper handling and installation procedures can cause damage. ESD damage can range from subtle performance degradation to complete device failure. Precision integrated circuits may be more susceptible to damage because very small parametric changes could cause the device not to meet its published specifications.

DISCLAIMER

SG Micro Corp reserves the right to make any change in circuit design, specification or other related things if necessary without notice at any time.

PIN CONFIGURATIONS



PIN DESCRIPTION

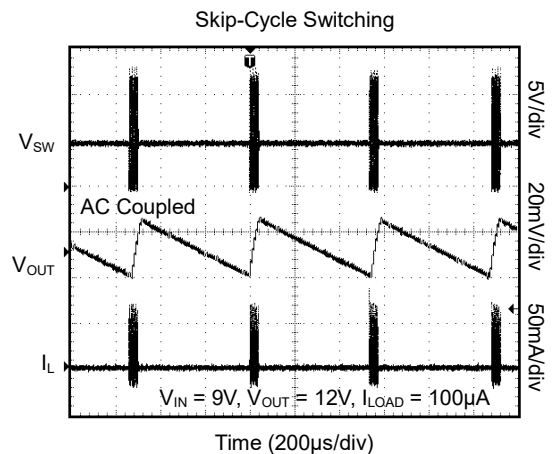
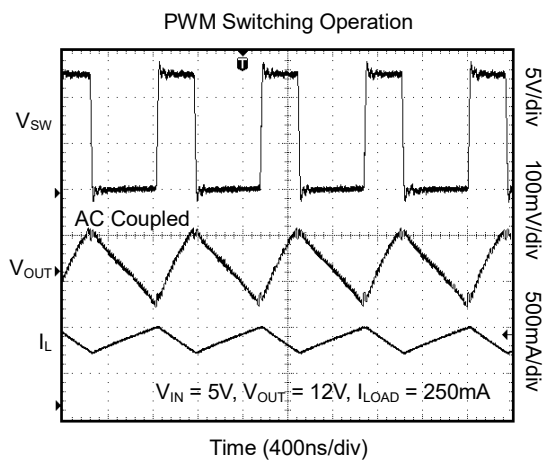
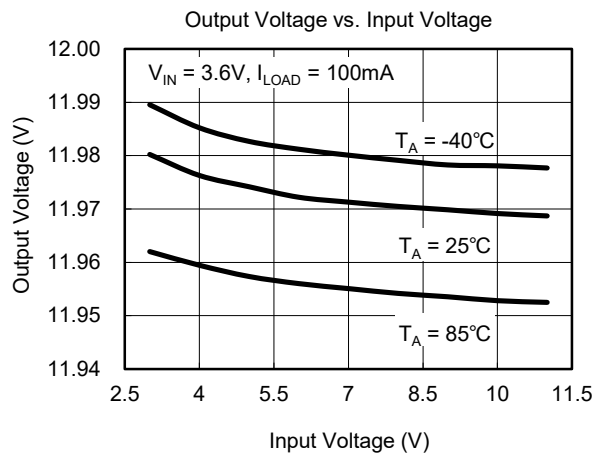
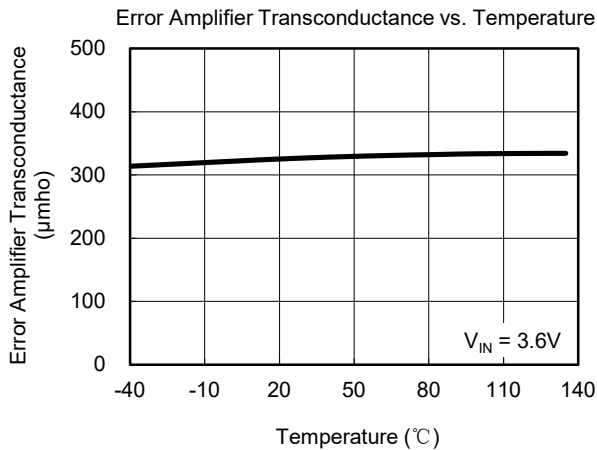
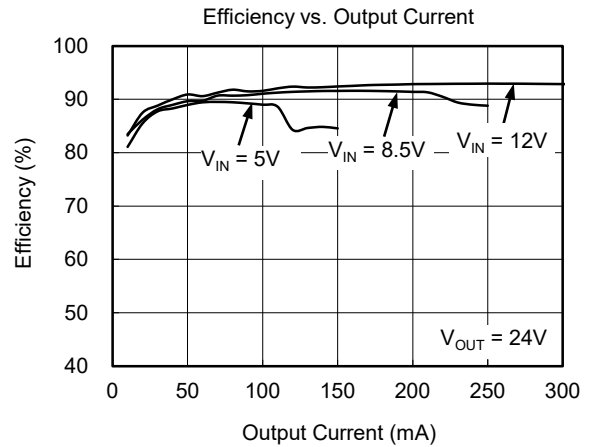
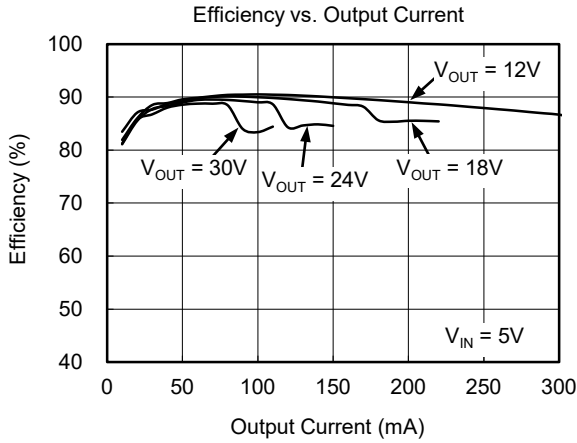
PIN		NAME	I/O	FUNCTION
TDFN-2x2-6L	TSOT-23-6			
6	1	VIN	I	The Input Supply Pin.
5	2	EN	I	Enable Pin of the Boost Regulator. Logic low makes the device disabled. Logic high makes the device enabled.
4	3	SW	I	Switching Node. Connect SW to the switched side of the inductor.
3	4	GND	O	Ground.
2	5	COMP	O	Output of the Transconductance Error Amplifier. Connect an external RC network to this pin to compensate the regulator.
1	6	FB	I	Feedback Pin. Connect to the center tap of a resistor divider to program the output voltage.
Thermal Pad	—	GND	—	Solder the thermal pad to the analog ground plane and recommend to connect thermal vias to the ground plane when available.

ELECTRICAL CHARACTERISTICS(V_{IN} = 3.6V, V_{EN} = V_{IN}, Full = -40°C to +85°C, typical values are at T_A = +25°C, unless otherwise noted.)

PARAMETER	SYMBOL	CONDITIONS	TEMP	MIN	TYP	MAX	UNITS
SUPPLY CURRENT							
Input Voltage Range	V _{IN}		+25°C	3		20	V
Operating Quiescent Current into VIN	I _Q	Device PWM switching no load	+25°C		400	600	μA
Shutdown Current	I _{SHDN}	V _{EN} = GND, V _{IN} = 4.2V	+25°C			1	μA
Under-Voltage Lockout Threshold	UVLO	V _{IN} falling	+25°C		2.2	2.5	V
Under-Voltage Lockout Hysteresis	V _{HYS}		+25°C		70		mV
ENABLE AND REFERENCE CONTROL							
EN Logic High Voltage	V _{IH}	V _{IN} = 3V to 20V	Full	1.5			V
EN Logic Low Voltage	V _{IL}	V _{IN} = 3V to 20V	Full			0.4	V
EN Pull-Down Resistor	R _{EN}		+25°C	300	500	700	kΩ
VOLTAGE AND CURRENT CONTROL							
Voltage Feedback Regulation Voltage	V _{REF}		Full	1.186	1.211	1.236	V
Voltage Feedback Input Bias Current	I _{FB}	V _{FB} = 1.3V	Full			200	nA
Oscillator Frequency	f _{OSC}		Full	0.96	1.2	1.44	MHz
Maximum Duty Cycle	D	V _{FB} = 1.1V	+25°C	90	94		%
Minimum ON Pulse Width	t _{MIN_ON}		+25°C		80		ns
COMP Pin Sink Current	I _{SINK}		+25°C		55		μA
COMP Pin Source Current	I _{SOURCE}		+25°C		55		μA
Error Amplifier Transconductance	G _{EA}		Full	220	300	440	μmho
POWER SWITCH							
N-Channel MOSFET On-Resistance	R _{DS(ON)}	V _{IN} = 3.6V	+25°C		0.36	0.55	Ω
		V _{IN} = 3.0V	+25°C			0.6	
N-Channel Leakage Current	I _{LN_NFET}	V _{SW} = 35V, V _{EN} = 0V	+25°C			1	μA
OC AND SS							
N-Channel MOSFET Current Limit	I _{LIM}		+25°C	0.8	1.1	1.3	A
V _{REF} Ramp Up Time	t _r		+25°C		2		ms
THERMAL SHUTDOWN							
Thermal Shutdown Threshold	T _{SHDN}				150		°C
Thermal Shutdown Threshold Hysteresis	T _{HYS}				15		°C

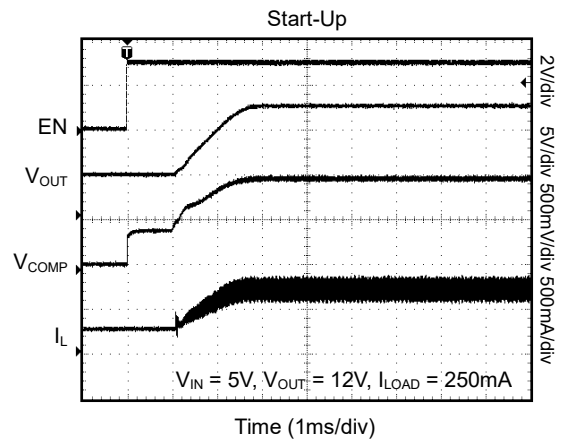
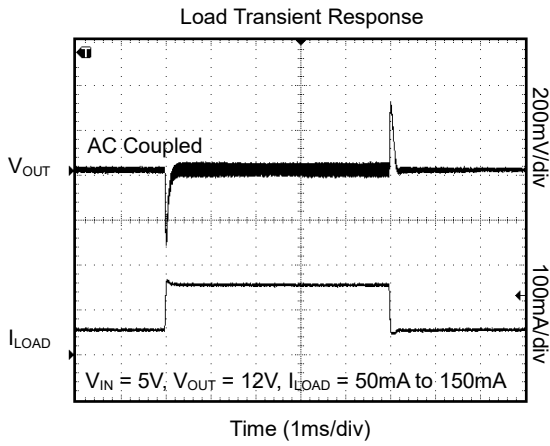
TYPICAL PERFORMANCE CHARACTERISTICS

$T_A = +25^\circ\text{C}$, $L = 10\mu\text{H}$, $D1 = \text{ONsemi MBR0540T1}$, unless otherwise noted.



TYPICAL PERFORMANCE CHARACTERISTICS (continued)

T_A = +25°C, L = 10µH, D1 = ONsemi MBR0540T1, unless otherwise noted.



REVISION HISTORY

NOTE: Page numbers for previous revisions may differ from page numbers in the current version.

FEBRUARY 2018 – REV.A to REV.A.1

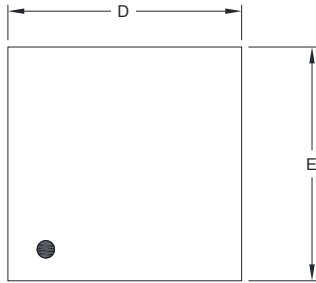
Updated Package Thermal Resistance of TDFN-2x2-6L 2

Changes from Original (FEBRUARY 2014) to REV.A

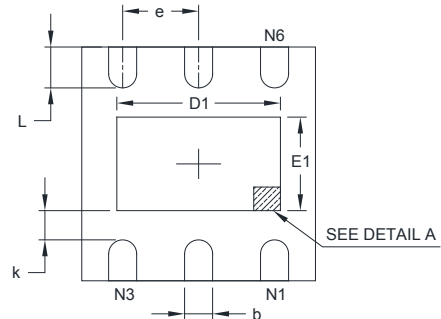
Changed from product preview to production data..... All

PACKAGE OUTLINE DIMENSIONS

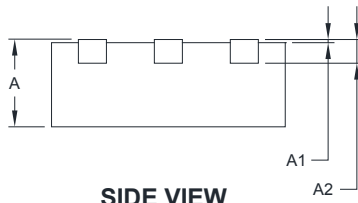
TDFN-2x2-6L



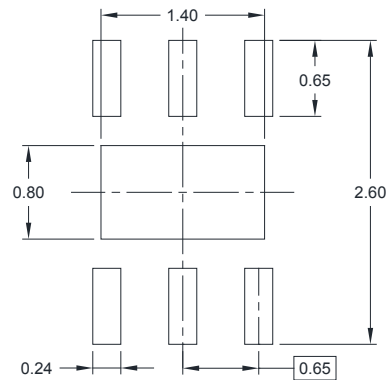
TOP VIEW



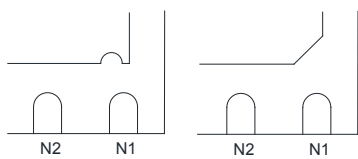
BOTTOM VIEW



SIDE VIEW



RECOMMENDED LAND PATTERN (Unit: mm)



DETAIL A

Pin #1 ID and Tie Bar Mark Options

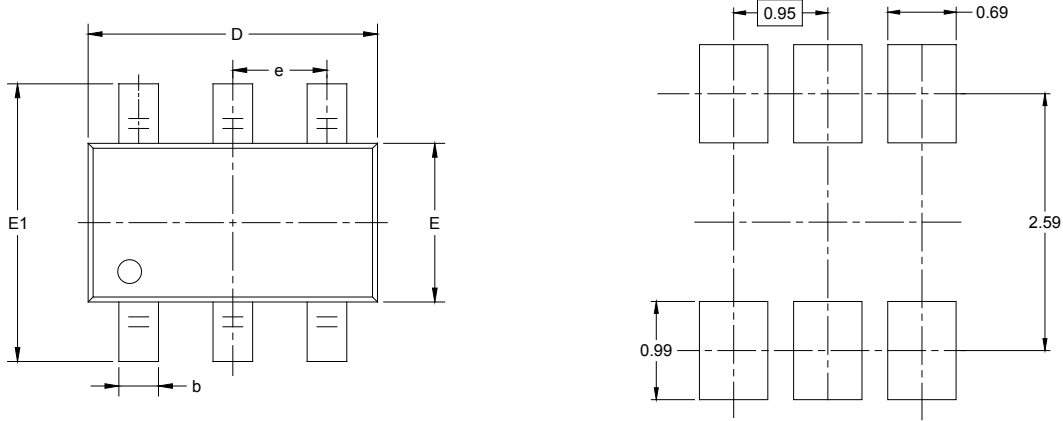
NOTE: The configuration of the Pin #1 identifier is optional, but must be located within the zone indicated.

Symbol	Dimensions In Millimeters		Dimensions In Inches	
	MIN	MAX	MIN	MAX
A	0.700	0.800	0.028	0.031
A1	0.000	0.050	0.000	0.002
A2	0.203 REF		0.008 REF	
D	1.900	2.100	0.075	0.083
D1	1.100	1.450	0.043	0.057
E	1.900	2.100	0.075	0.083
E1	0.600	0.850	0.024	0.034
k	0.200 MIN		0.008 MIN	
b	0.180	0.300	0.007	0.012
e	0.650 TYP		0.026 TYP	
L	0.250	0.450	0.010	0.018

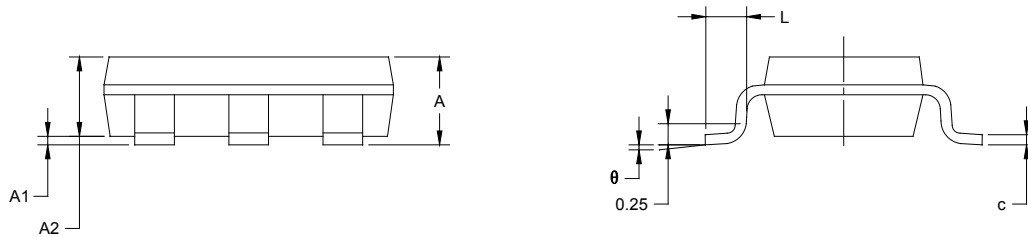
PACKAGE INFORMATION

PACKAGE OUTLINE DIMENSIONS

TSOT-23-6



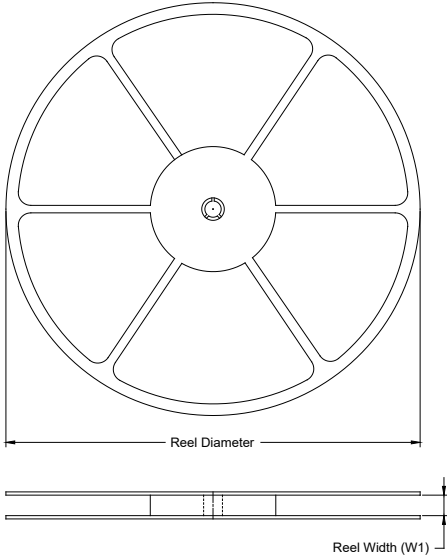
RECOMMENDED LAND PATTERN (Unit: mm)



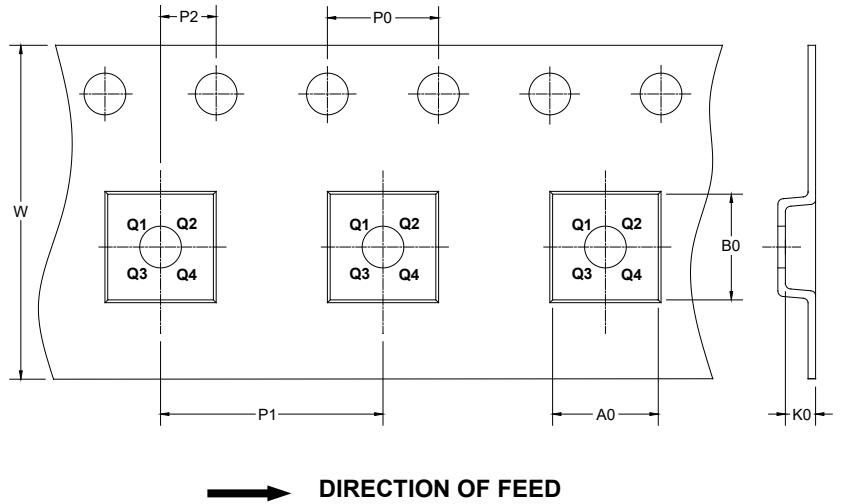
Symbol	Dimensions In Millimeters		Dimensions In Inches	
	MIN	MAX	MIN	MAX
A		1.000		0.043
A1	0.000	0.100	0.000	0.004
A2	0.700	0.900	0.028	0.039
b	0.300	0.500	0.012	0.020
c	0.080	0.200	0.003	0.008
D	2.850	2.950	0.112	0.116
E	1.550	1.650	0.061	0.065
E1	2.650	2.950	0.104	0.116
e	0.950 BSC		0.037 BSC	
L	0.300	0.600	0.012	0.024
θ	0°	8°	0°	8°

TAPE AND REEL INFORMATION

REEL DIMENSIONS



TAPE DIMENSIONS



NOTE: The picture is only for reference. Please make the object as the standard.

KEY PARAMETER LIST OF TAPE AND REEL

Package Type	Reel Diameter	Reel Width W1 (mm)	A0 (mm)	B0 (mm)	K0 (mm)	P0 (mm)	P1 (mm)	P2 (mm)	W (mm)	Pin1 Quadrant
TDFN-2x2-6L	7"	9.5	2.30	2.30	1.10	4.0	4.0	2.0	8.0	Q1
TSOT-23-6	7"	9.5	3.20	3.10	1.10	4.0	4.0	2.0	8.0	Q3

000001

PACKAGE INFORMATION

CARTON BOX DIMENSIONS



NOTE: The picture is only for reference. Please make the object as the standard.

KEY PARAMETER LIST OF CARTON BOX

Reel Type	Length (mm)	Width (mm)	Height (mm)	Pizza/Carton
7" (Option)	368	227	224	8
7"	442	410	224	18

DD0002

单击下面可查看定价，库存，交付和生命周期等信息

[>>SGMICRO\(圣邦微电子\)](#)