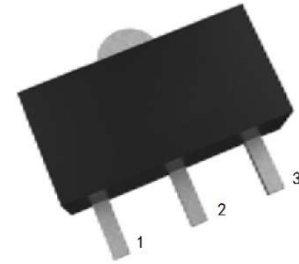


3-Terminal Positive Voltage Regulator

FEATURES

- Maximum Output Current I_o : 0.15 A
- Output Voltage V_o : 5V/6V/8V/9V/10V/12V/15V/18V/20V/24V
- Continuous Total Dissipation
- P_D : 0.5 W ($T_a = 25^\circ\text{C}$)
- Thermal overload protection
- Short circuit current limiting



1: OUT 2: GND 3: IN

SOT-89P PLASTIC PACKAGE

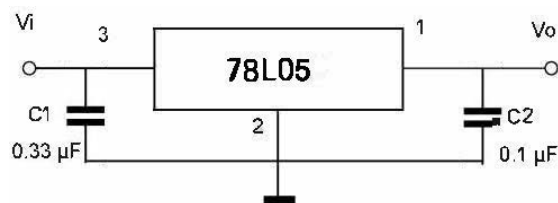
Absolute Maximum Ratings ($T_a = 25^\circ\text{C}$)

Parameter		Symbol	Rating	Unit
Input Voltage	78L05~78L15	V_i	30	V
	78L18~78L24		40	
Output Current	78L05~78L24	I_o	150	mA
Power Dissipation		P_{tot}	500 ¹⁾	mW
Operating Temperature		T_{opr}	- 40 to + 85	$^\circ\text{C}$
Junction Temperature Range		T_j	- 40 to +125	$^\circ\text{C}$
Storage Temperature Range		T_{stg}	- 55 to +150	$^\circ\text{C}$

¹⁾ Device is installed in the heat dissipation good environment

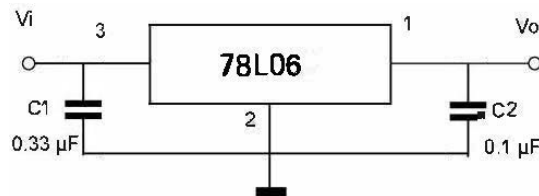
78L05 Electrical Characteristics ($T_a = 25^\circ\text{C}$) (Unless otherwise specified, $V_i = 10\text{ V}$, $I_o = 40\text{ mA}$, $C_1 = 0.33\ \mu\text{F}$, $C_o = 0.1\ \mu\text{F}$)

Parameter	Symbol	Test Condition	Min.	Typ.	Max.	Unit
Output Voltage	V_o	$T_j = 25^\circ\text{C}$	4.75	5	5.25	V
		$7\text{ V} \leq V_i \leq 20\text{ V}$, $1\text{ mA} \leq I_o \leq 40\text{ mA}$	4.65	5	5.35	V
Voltage Regulation	S_v	$7\text{ V} \leq V_i \leq 20\text{ V}$, $T_j = 25^\circ\text{C}$	--	--	150	mV
		$8\text{ V} \leq V_i \leq 20\text{ V}$, $T_j = 25^\circ\text{C}$	--	--	100	
Current Regulation	S_i	$1\text{ mA} \leq I_o \leq 100\text{ mA}$, $T_j = 25^\circ\text{C}$	--	--	60	mV
Quiescent Current	I_Q	$T_j = 25^\circ\text{C}$	--	--	6	mA
Quiescent Current Change	ΔI_Q	$8\text{ V} \leq V_i \leq 20\text{ V}$	--	--	1.5	mA
		$1\text{ mA} \leq I_o \leq 40\text{ mA}$	--	--	0.1	
Ripple Rejection	S_{rip}	$f = 120\text{ Hz}$, $8\text{ V} \leq V_i \leq 18\text{ V}$, $T_j = 25^\circ\text{C}$	--	49	--	dB
Dropout Voltage	V_{Drop}	$T_j = 25^\circ\text{C}$	--	1.7	--	V

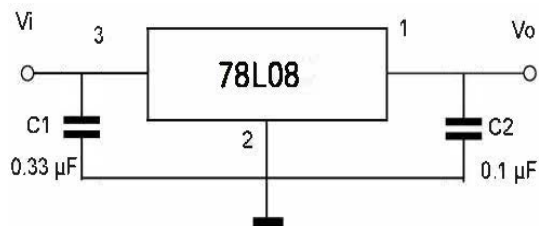


78L06 Electrical Characteristics (T_a = 25°C) (Unless otherwise specified, V_I = 10 V, I_O = 40 mA, C_I = 0.33 μF, C_O = 0.1 μF)

Parameter	Symbol	Test Condition	Min.	Typ.	Max.	Unit
Output Voltage	V _O	T _J = 25°C	5.70	6	6.30	V
		8.1 V ≤ V _I ≤ 21 V, 1 mA ≤ I _O ≤ 40 mA	5.58	6	6.42	V
Voltage Regulation	S _V	8.1 V ≤ V _I ≤ 21 V, T _J = 25°C	--	--	150	mV
		9 V ≤ V _I ≤ 21 V, T _J = 25°C	--	--	110	
Current Regulation	S _I	1 mA ≤ I _O ≤ 100 mA, T _J = 25°C	--	--	70	mV
Quiescent Current	I _Q	T _J = 25°C	--	--	6	mA
Quiescent Current Change	ΔI _Q	9 V ≤ V _I ≤ 21 V	--	--	1.5	mA
		1 mA ≤ I _O ≤ 40 mA	--	--	0.1	
Ripple Rejection	S _{rip}	f = 120 Hz, 9 V ≤ V _I ≤ 19 V, T _J = 25°C	--	47	--	dB
Dropout Voltage	V _{Drop}	T _J = 25°C	--	1.7	--	V

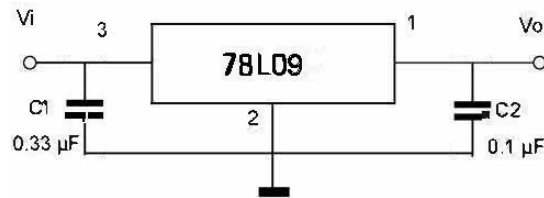

78L08 Electrical Characteristics (T_a = 25°C) (Unless otherwise specified, 0 ≤ T_J ≤ +125°C, V_I = 14V, I_O = 40mA, C_I = 0.33μF, C_O = 0.1μF)

Parameter	Symbol	Test Condition	Min.	Typ.	Max.	Unit
Output Voltage	V _O	T _J = 25°C	7.60	8	8.40	V
		10.5 V ≤ V _I ≤ 23 V, 1 mA ≤ I _O ≤ 40 mA	7.44	8	8.56	V
Voltage Regulation	S _V	10.5 V ≤ V _I ≤ 23 V, T _J = 25°C	--	--	175	mV
		11 V ≤ V _I ≤ 23 V, T _J = 25°C	--	--	125	
Current Regulation	S _I	1 mA ≤ I _O ≤ 100 mA, T _J = 25°C	--	--	80	mV
Quiescent Current	I _Q	T _J = 25°C	--	--	6.5	mA
Quiescent Current Change	ΔI _Q	11 V ≤ V _I ≤ 23 V	--	--	1.5	mA
		1 mA ≤ I _O ≤ 40 mA	--	--	0.1	
Ripple Rejection	S _{rip}	f = 120 Hz, 12 V ≤ V _I ≤ 23 V, T _J = 25°C	--	45	--	dB
Dropout Voltage	V _{Drop}	T _J = 25°C	--	1.7	--	V



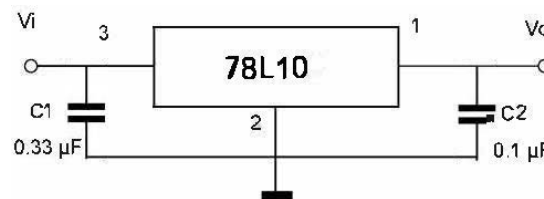
78L09 Electrical Characteristics ($T_a = 25^\circ\text{C}$) (Unless otherwise specified: $0 \leq T_J \leq +125^\circ\text{C}$, $V_I = 15\text{V}$, $I_O = 40\text{mA}$, $C_I = 0.33\mu\text{F}$, $C_O = 0.1\mu\text{F}$)

Parameter	Symbol	Test Condition	Min.	Typ.	Max.	Unit
Output Voltage	V_O	$T_J = 25^\circ\text{C}$	8.55	9	9.45	V
		$11.4\text{V} \leq V_I \leq 24\text{V}$, $1\text{mA} \leq I_O \leq 40\text{mA}$	8.37	9	9.63	V
Voltage Regulation	S_V	$11.4\text{V} \leq V_I \leq 24\text{V}$, $T_J = 25^\circ\text{C}$	--	--	200	mV
		$12\text{V} \leq V_I \leq 24\text{V}$, $T_J = 25^\circ\text{C}$	--	--	160	
Current Regulation	S_I	$1\text{mA} \leq I_O \leq 100\text{mA}$, $T_J = 25^\circ\text{C}$	--	--	90	mV
Quiescent Current	I_Q	$T_J = 25^\circ\text{C}$	--	--	6.5	mA
Quiescent Current Change	ΔI_Q	$12\text{V} \leq V_I \leq 24\text{V}$	--	--	1.5	mA
		$1\text{mA} \leq I_O \leq 40\text{mA}$	--	--	0.1	
Ripple Rejection	S_{rip}	$f = 120\text{Hz}$, $12\text{V} \leq V_I \leq 24\text{V}$, $T_J = 25^\circ\text{C}$	--	44	--	dB
Dropout Voltage	V_{Drop}	$T_J = 25^\circ\text{C}$	--	1.7	--	V



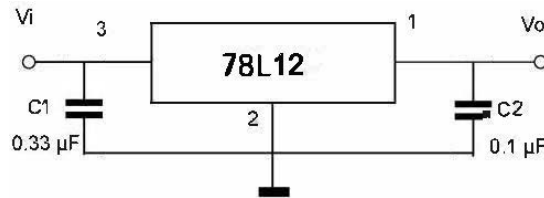
78L10 Electrical Characteristics ($T_a = 25^\circ\text{C}$) (Unless otherwise specified: $0 \leq T_J \leq +125^\circ\text{C}$, $V_I = 16\text{V}$, $I_O = 40\text{mA}$, $C_I = 0.33\mu\text{F}$, $C_O = 0.1\mu\text{F}$)

Parameter	Symbol	Test Condition	Min.	Typ.	Max.	Unit
Output Voltage	V_O	$T_J = 25^\circ\text{C}$	9.50	10	10.50	V
		$12.5\text{V} \leq V_I \leq 25\text{V}$, $1\text{mA} \leq I_O \leq 40\text{mA}$	9.30	10	10.70	V
Voltage Regulation	S_V	$12.5\text{V} \leq V_I \leq 25\text{V}$, $T_J = 25^\circ\text{C}$	--	--	230	mV
		$13\text{V} \leq V_I \leq 25\text{V}$, $T_J = 25^\circ\text{C}$	--	--	170	
Current Regulation	S_I	$1\text{mA} \leq I_O \leq 100\text{mA}$, $T_J = 25^\circ\text{C}$	--	--	90	mV
Quiescent Current	I_Q	$T_J = 25^\circ\text{C}$	--	--	6.5	mA
Quiescent Current Change	ΔI_Q	$13\text{V} \leq V_I \leq 25$	--	--	1.5	mA
		$1\text{mA} \leq I_O \leq 40\text{mA}$	--	--	0.1	
Ripple Rejection	S_{rip}	$f = 120\text{Hz}$, $13\text{V} \leq V_I \leq 24\text{V}$, $T_J = 25^\circ\text{C}$	--	43	--	dB
Dropout Voltage	V_{Drop}	$T_J = 25^\circ\text{C}$	--	1.7	--	V



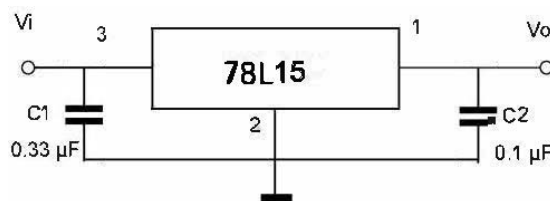
78L12 Electrical Characteristics ($T_a = 25^\circ\text{C}$) (Unless otherwise specified: $0 \leq T_J \leq +125^\circ\text{C}$, $V_I = 19\text{V}$, $I_O = 40\text{mA}$, $C_I = 0.33\mu\text{F}$, $C_O = 0.1\mu\text{F}$)

Parameter	Symbol	Test Condition	Min.	Typ.	Max.	Unit
Output Voltage	V_O	$T_j = 25^\circ\text{C}$	11.40	12	12.60	V
		$14.5\text{V} \leq V_I \leq 27\text{V}$, $1\text{mA} \leq I_O \leq 40\text{mA}$	11.16	12	12.84	V
Voltage Regulation	S_v	$14.5\text{V} \leq V_I \leq 27\text{V}$, $T_j = 25^\circ\text{C}$	--	--	250	mV
		$16\text{V} \leq V_I \leq 27\text{V}$, $T_j = 25^\circ\text{C}$	--	--	200	
Current Regulation	S_I	$1\text{mA} \leq I_O \leq 100\text{mA}$, $T_j = 25^\circ\text{C}$	--	--	100	mV
Quiescent Current	I_Q	$T_j = 25^\circ\text{C}$	--	--	6.5	mA
Quiescent Current Change	ΔI_Q	$16\text{V} \leq V_I \leq 27\text{V}$	--	--	1.5	mA
		$1\text{mA} \leq I_O \leq 40\text{mA}$	--	--	0.1	
Ripple Rejection	S_{rip}	$f = 120\text{Hz}$, $15\text{V} \leq V_I \leq 25\text{V}$, $T_j = 25^\circ\text{C}$	--	43	--	dB
Dropout Voltage	V_{Drop}	$T_j = 25^\circ\text{C}$	--	1.7	--	V



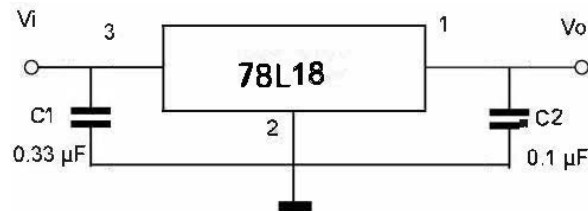
78L15 Electrical Characteristics ($T_a = 25^\circ\text{C}$) (Unless otherwise specified: $0 \leq T_J \leq +125^\circ\text{C}$, $V_I = 23\text{V}$, $I_O = 40\text{mA}$, $C_I = 0.33\mu\text{F}$, $C_O = 0.1\mu\text{F}$)

Parameter	Symbol	Test Condition	Min.	Typ.	Max.	Unit
Output Voltage	V_O	$T_j = 25^\circ\text{C}$	14.25	15	15.75	V
		$17.5\text{V} \leq V_I \leq 30\text{V}$, $1\text{mA} \leq I_O \leq 40\text{mA}$	13.95	15	16.05	V
Voltage Regulation	S_v	$17.5\text{V} \leq V_I \leq 30\text{V}$, $T_j = 25^\circ\text{C}$	--	--	200	mV
		$20\text{V} \leq V_I \leq 30\text{V}$, $T_j = 25^\circ\text{C}$	--	--	250	
Current Regulation	S_I	$1\text{mA} \leq I_O \leq 100\text{mA}$, $T_j = 25^\circ\text{C}$	--	--	150	mV
Quiescent Current	I_Q	$T_j = 25^\circ\text{C}$	--	--	6.5	mA
Quiescent Current Change	ΔI_Q	$20\text{V} \leq V_I \leq 30\text{V}$	--	--	1.5	mA
		$1\text{mA} \leq I_O \leq 40\text{mA}$	--	--	0.1	
Ripple Rejection	S_{rip}	$f = 120\text{Hz}$, $18.5\text{V} \leq V_I \leq 28.5\text{V}$, $T_j = 25^\circ\text{C}$	--	40	--	dB
Dropout Voltage	V_{Drop}	$T_j = 25^\circ\text{C}$	--	1.7	--	V



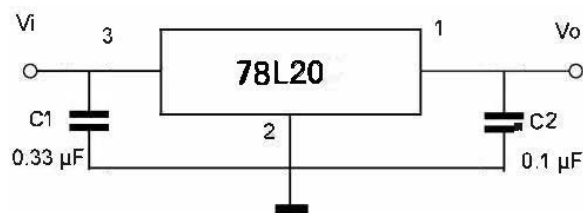
78L18 Electrical Characteristics ($T_a = 25^\circ\text{C}$) (Unless otherwise specified: $0 \leq T_J \leq +125^\circ\text{C}$, $V_I = 27\text{V}$, $I_O = 40\text{mA}$, $C_I = 0.33\mu\text{F}$, $C_O = 0.1\mu\text{F}$)

Parameter	Symbol	Test Condition	Min.	Typ.	Max.	Unit
Output Voltage	V_O	$T_j = 25^\circ\text{C}$	17.10	18	18.90	V
		$21.4\text{V} \leq V_I \leq 33\text{V}$, $1\text{mA} \leq I_O \leq 40\text{mA}$	16.74	18	19.26	V
Voltage Regulation	S_V	$21.4\text{V} \leq V_I \leq 33\text{V}$, $T_j = 25^\circ\text{C}$	--	--	325	mV
		$22\text{V} \leq V_I \leq 33\text{V}$, $T_j = 25^\circ\text{C}$	--	--	275	
Current Regulation	S_I	$1\text{mA} \leq I_O \leq 100\text{mA}$, $T_j = 25^\circ\text{C}$	--	--	170	mV
Quiescent Current	I_Q	$T_j = 25^\circ\text{C}$	--	--	6.5	mA
Quiescent Current Change	ΔI_Q	$22\text{V} \leq V_I \leq 33\text{V}$	--	--	1.5	mA
		$1\text{mA} \leq I_O \leq 40\text{mA}$	--	--	0.1	
Ripple Rejection	S_{rip}	$f = 120\text{Hz}$, $23\text{V} \leq V_I \leq 33\text{V}$, $T_j = 25^\circ\text{C}$	--	38	--	dB
Dropout Voltage	V_{Drop}	$T_j = 25^\circ\text{C}$	--	1.7	--	V



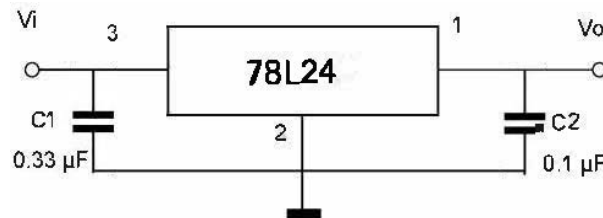
78L20 Electrical Characteristics ($T_a = 25^\circ\text{C}$) (Unless otherwise specified: $0 \leq T_J \leq +125^\circ\text{C}$, $V_I = 29\text{V}$, $I_O = 40\text{mA}$, $C_I = 0.33\mu\text{F}$, $C_O = 0.1\mu\text{F}$)

Parameter	Symbol	Test Condition	Min.	Typ.	Max.	Unit
Output Voltage	V_O	$T_j = 25^\circ\text{C}$	19.0	20	21.0	V
		$23.5\text{V} \leq V_I \leq 35\text{V}$, $1\text{mA} \leq I_O \leq 40\text{mA}$	18.60	20	21.40	V
Voltage Regulation	S_V	$23.5\text{V} \leq V_I \leq 35\text{V}$, $T_j = 25^\circ\text{C}$	--	--	330	mV
		$24\text{V} \leq V_I \leq 35\text{V}$, $T_j = 25^\circ\text{C}$	--	--	285	
Current Regulation	S_I	$1\text{mA} \leq I_O \leq 100\text{mA}$, $T_j = 25^\circ\text{C}$	--	--	180	mV
Quiescent Current	I_Q	$T_j = 25^\circ\text{C}$	--	--	6.5	mA
Quiescent Current Change	ΔI_Q	$24\text{V} \leq V_I \leq 35\text{V}$	--	--	1.5	mA
		$1\text{mA} \leq I_O \leq 40\text{mA}$	--	--	0.1	
Ripple Rejection	S_{rip}	$f = 120\text{Hz}$, $25\text{V} \leq V_I \leq 35\text{V}$, $T_j = 25^\circ\text{C}$	--	37	--	dB
Dropout Voltage	V_{Drop}	$T_j = 25^\circ\text{C}$	--	1.7	--	V



78L24 Electrical Characteristics ($T_a = 25^\circ\text{C}$) (Unless otherwise specified: $0 \leq T_J \leq +125^\circ\text{C}$, $V_I = 33\text{V}$, $I_O = 40\text{mA}$, $C_I = 0.33\mu\text{F}$, $C_O = 0.1\mu\text{F}$)

Parameter	Symbol	Test Condition	Min.	Typ.	Max.	Unit
Output Voltage	V_O	$T_J = 25^\circ\text{C}$	22.80	24	25.20	V
		$27.5\text{V} \leq V_I \leq 38\text{V}$, $1\text{mA} \leq I_O \leq 40\text{mA}$	22.32	24	25.68	V
Voltage Regulation	S_V	$27.5\text{V} \leq V_I \leq 38\text{V}$, $T_J = 25^\circ\text{C}$	--	--	350	mV
		$28\text{V} \leq V_I \leq 38\text{V}$, $T_J = 25^\circ\text{C}$	--	--	300	
Current Regulation	S_I	$1\text{mA} \leq I_O \leq 100\text{mA}$, $T_J = 25^\circ\text{C}$	--	--	200	mV
Quiescent Current	I_Q	$T_J = 25^\circ\text{C}$	--	--	6.5	mA
Quiescent Current Change	ΔI_Q	$28\text{V} \leq V_I \leq 38\text{V}$	--	--	1.5	mA
		$1\text{mA} \leq I_O \leq 40\text{mA}$	--	--	0.1	
Ripple Rejection	S_{rip}	$f = 120\text{Hz}$, $29\text{V} \leq V_I \leq 39\text{V}$, $T_J = 25^\circ\text{C}$	--	35	--	dB
Dropout Voltage	V_{Drop}	$T_J = 25^\circ\text{C}$	--	1.7	--	V



Electrical characteristic curve

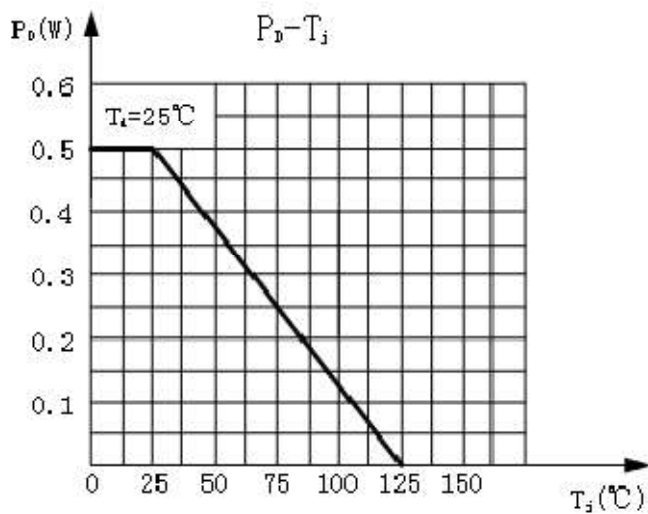


Figure 1: dissipation power relationship with the temperature curve

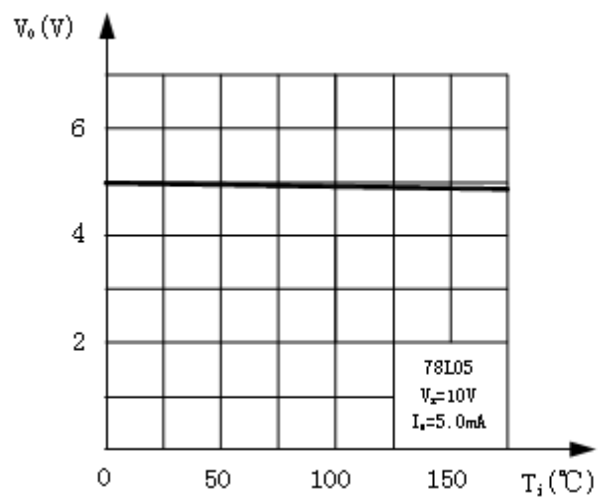
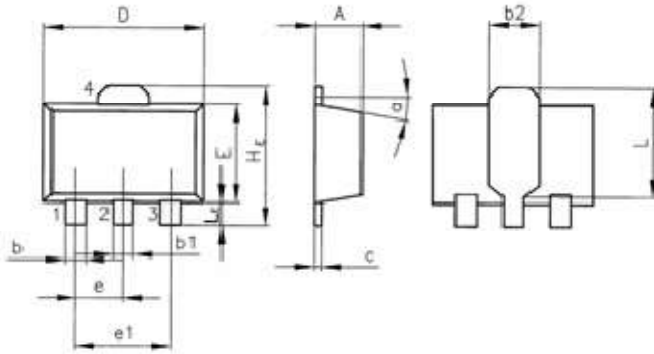


Figure 2 output voltage and junction temperature curve

Outline Dimension

Unit: mm



SOT-89P			
Symbol	min	typ	max
A	1.4	---	1.6
b	0.35	---	0.55
b1	0.4	---	0.65
b2	---	1.6	---
c	0.35	---	0.45
D	4.4	---	4.6
E	2.35	---	2.55
e	---	1.5	---
e1	---	3	---
HE	---	4.15	---
L	---	2.7	---
LE	---	1.0	---
α	---	5°	---

单击下面可查看定价，库存，交付和生命周期等信息

[>>SHIKUES\(时科\)](#)