

Three-terminal positive voltage regulator

FEATURES

Maximum Output current I_O : 0.1 A

Output voltage V_O : -6 V

Continuous total dissipation P_D : 0.35 W ($T_a=25^\circ\text{C}$)

ABSOLUTE MAXIMUM RATINGS (Operating temperature range applies)

Parameter	Symbol	Value	Unit
Input Voltage	V_I	-30	V
Operating Junction Temperature Range	T_{OPR}	0-150	$^\circ\text{C}$
Storage Temperature Range	T_{STG}	-65-150	$^\circ\text{C}$

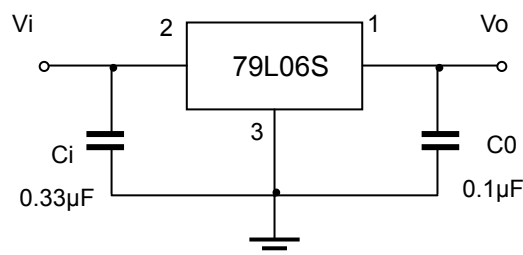


ELECTRICAL CHARACTERISTICS AT SPECIFIED VIRTUAL JUNCTION TEMPERATURE ($V_i=-11\text{V}, I_o=40\text{mA}, C_i=0.33\mu\text{F}, C_o=0.1\mu\text{F}$, unless otherwise specified)

Parameter	Symbol	Test conditions	Min	Typ	Max	Unit	
Output voltage	V_o	25°C	-5.75	-6.0	-6.25	V	
		-8V V_i -20V, $I_o=1\text{mA}\sim 40\text{mA}$	0-125 $^\circ\text{C}$	-5.7	-6.0	-6.3	V
		$I_o=1\text{mA}\sim 70\text{mA}$		-5.7	-6.0	-6.3	V
Load Regulation	V_o	$I_o=1\text{mA}\sim 100\text{mA}$	25°C		21	80	mV
		$I_o=1\text{mA}\sim 40\text{mA}$	25°C		11	40	mV
Line regulation	V_o	-8V V_i -20V	25°C		20	175	mV
		-9V V_i -20V	25°C		15	125	mV
Quiescent Current	I_q		25°C		3.9	6	mA
Quiescent Current Change	I_q	-9V V_i -20V	0-125 $^\circ\text{C}$			1.5	mA
		1mA I_o 40mA	0-125 $^\circ\text{C}$			0.1	mA
Output Noise Voltage	V_N	10Hz f 100KHz	25°C		44		μV
Ripple Rejection	RR	-9V V_i -19V, $f=120\text{Hz}$	0-125 $^\circ\text{C}$	40	48		dB
Dropout Voltage	V_d		25°C		1.7		V

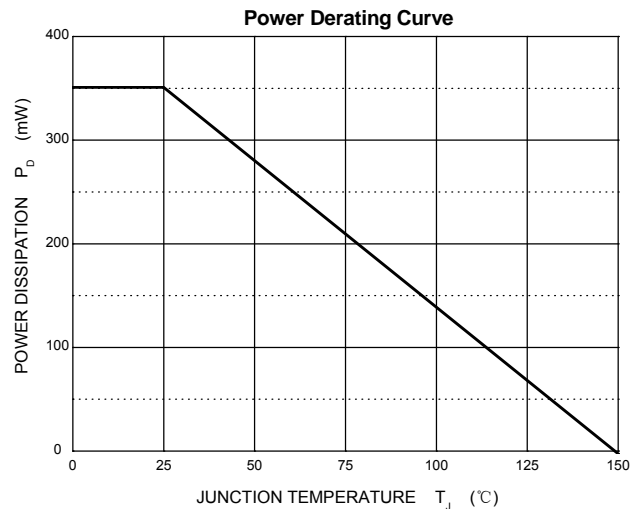
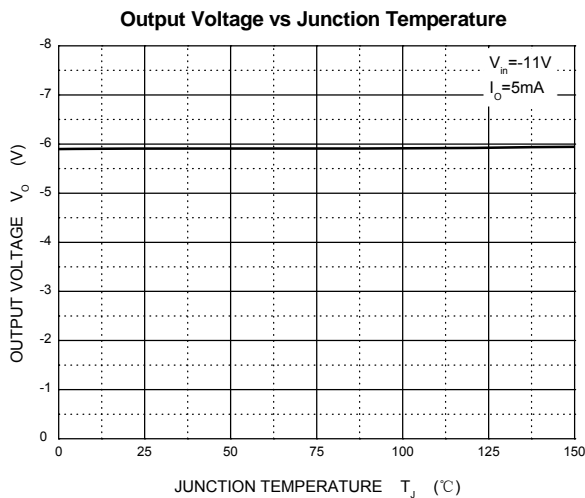
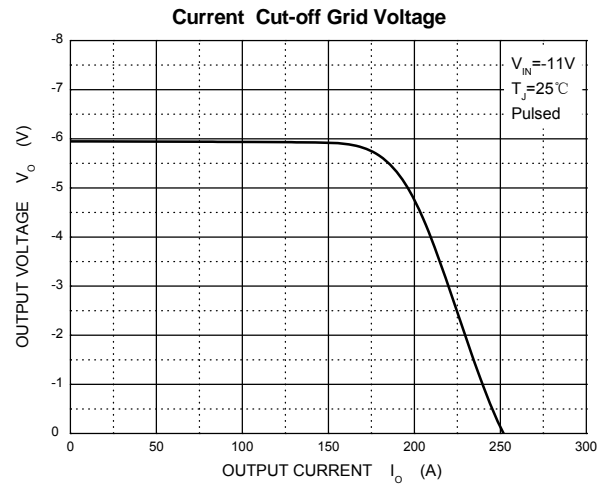
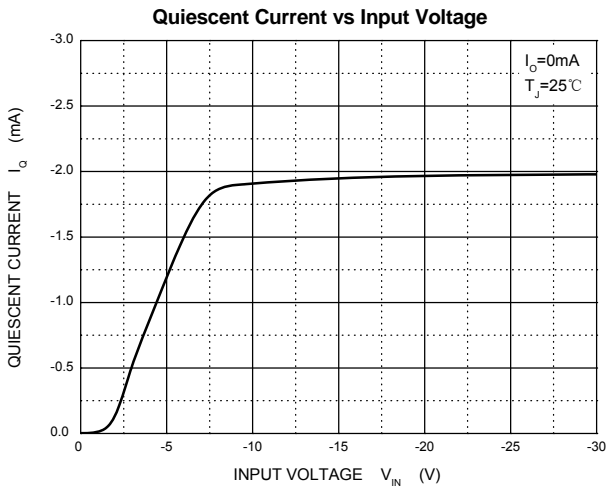
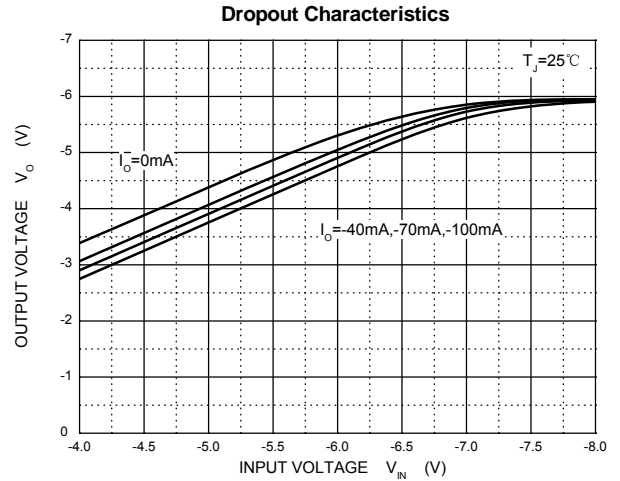
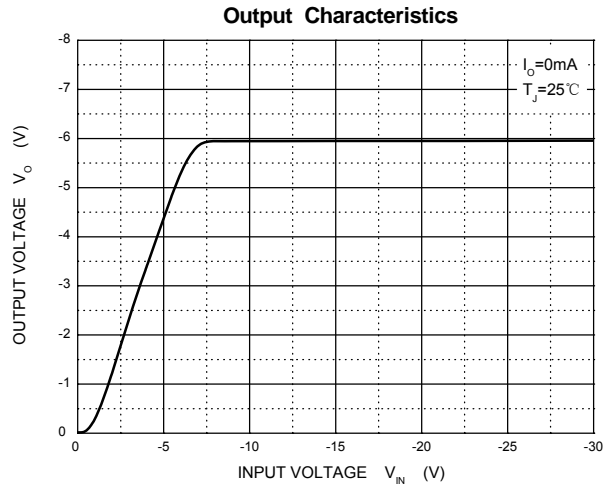
* Pulse test.

TYPICAL APPLICATION



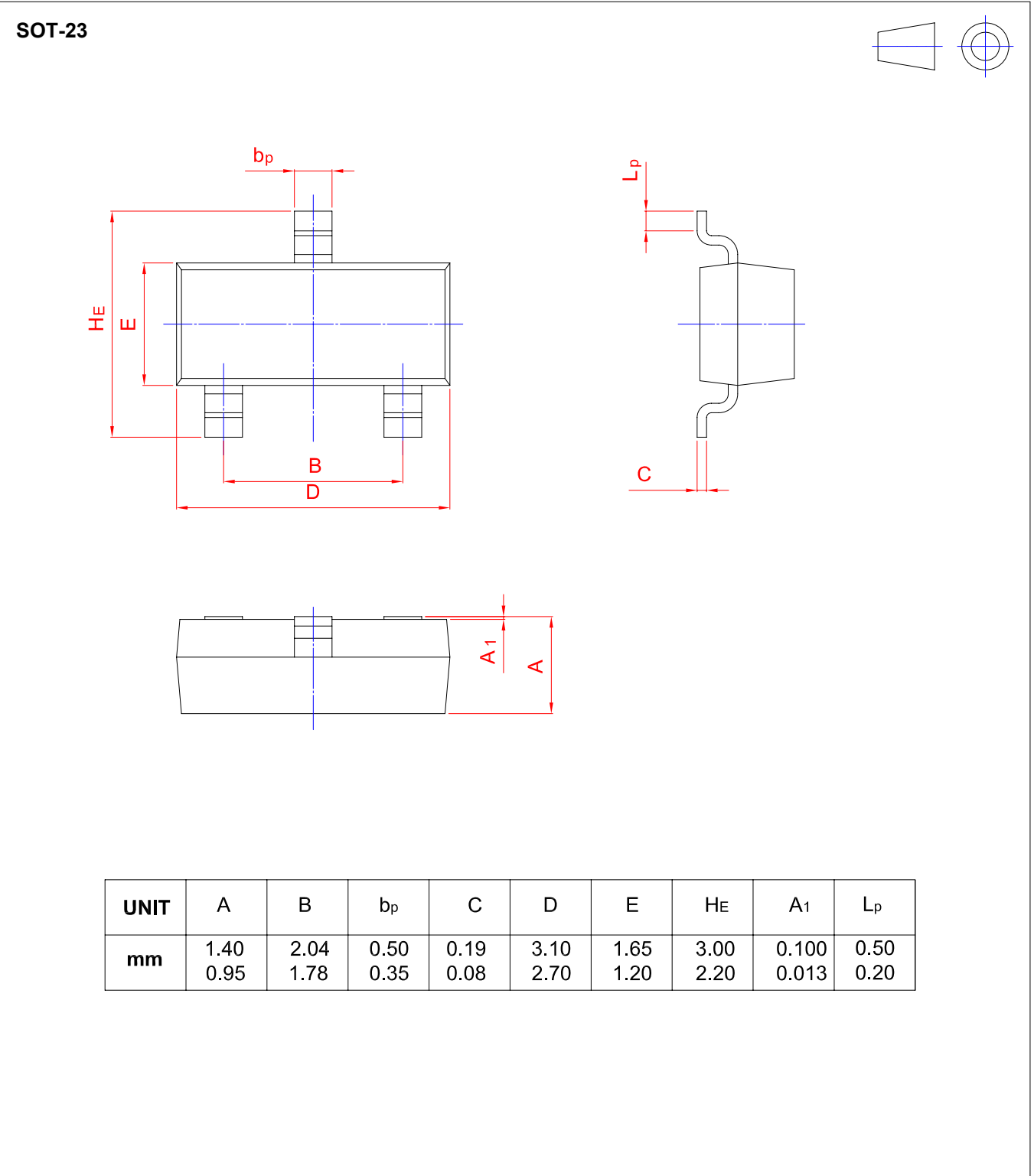
Note: Bypass capacitors are recommended for optimum stability and transient response and should be located as close as Possible to the regulators.

Typical Characteristics



PACKAGE OUTLINE

Plastic surface mounted package; 3 leads



单击下面可查看定价，库存，交付和生命周期等信息

[>>SHIKUES\(时科\)](#)