

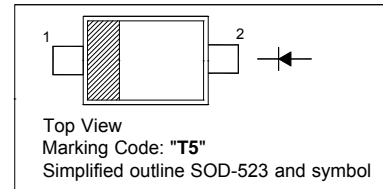
## 1N4448WT

### Silicon Epitaxial Planar Switching Diode

Fast Switching Diode

#### PINNING

| PIN | DESCRIPTION |
|-----|-------------|
| 1   | Cathode     |
| 2   | Anode       |



#### Absolute Maximum Ratings ( $T_a = 25\text{ }^\circ\text{C}$ )

| Parameter  | Symbol      | Value         | Unit             |
|--|-------------|---------------|------------------|
| Peak Reverse Voltage   | $V_{RM}$    | 100           | V                |
| Reverse Voltage  | $V_R$       | 80            | V                |
| Average Rectified Forward Current  | $I_{F(AV)}$ | 125           | mA               |
| Forward Continuous Current   | $I_{FM}$    | 250           | mA               |
| Non-Repetitive Peak Forward Surge Current (at $t = 1\text{ }\mu\text{s}$ ) | $I_{FSM}$   | 0.5           | A                |
| Power Dissipation  | $P_d$       | 150           | mW               |
| Junction Temperature   | $T_j$       | 150           | $^\circ\text{C}$ |
| Storage Temperature Range  | $T_{stg}$   | - 65 to + 150 | $^\circ\text{C}$ |

#### Characteristics at $T_a = 25\text{ }^\circ\text{C}$

| Parameter   | Symbol      | Min.                | Max.                       | Unit                                       |
|---|-------------|---------------------|----------------------------|--|
| Forward Voltage<br>at $I_F = 5\text{ mA}$<br>at $I_F = 10\text{ mA}$<br>at $I_F = 100\text{ mA}$<br>at $I_F = 150\text{ mA}$  | $V_F$       | 0.62<br>-<br>-<br>- | 0.72<br>0.855<br>1<br>1.25 | V  |
| Reverse Leakage Current<br>at $V_R = 80\text{ V}$<br>at $V_R = 20\text{ V}$<br>at $V_R = 75\text{ V}$ , $T_J = 150\text{ }^\circ\text{C}$<br>at $V_R = 25\text{ V}$ , $T_J = 150\text{ }^\circ\text{C}$ | $I_R$       | -<br>-<br>-<br>-    | 100<br>25<br>50<br>30      | nA<br>nA<br>$\mu\text{A}$<br>$\mu\text{A}$ |
| Reverse Breakdown Voltage<br>at $I_R = 100\text{ }\mu\text{A}$  | $V_{(BR)R}$ | 80                  | -                          | V  |
| Capacitance<br>at $V_R = 0.5\text{ V}$ , $f = 1\text{ MHz}$   | $C_{tot}$   | -                   | 4                          | pF   |
| Reverse Recovery Time<br>at $I_F = I_R = 10\text{ mA}$ , $I_{rr} = 0.1 \times I_R$ , $R_L = 100\text{ }\Omega$  | $t_{rr}$    | -                   | 4                          | ns   |

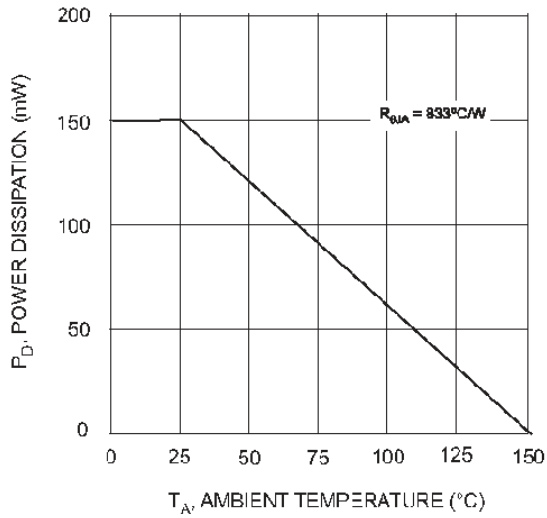


Fig. 1 Derating Curve

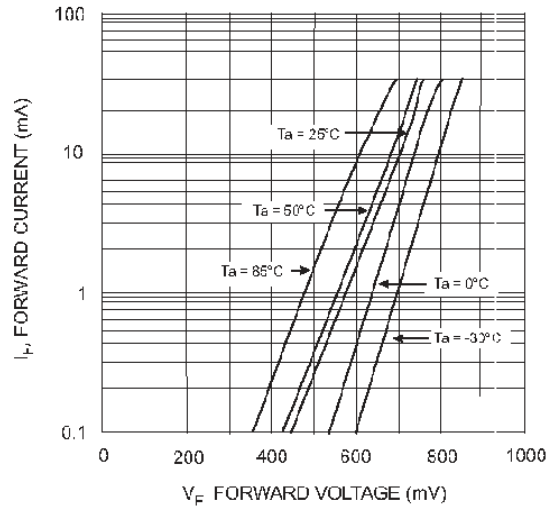


Fig. 2 Typical Forward Characteristics

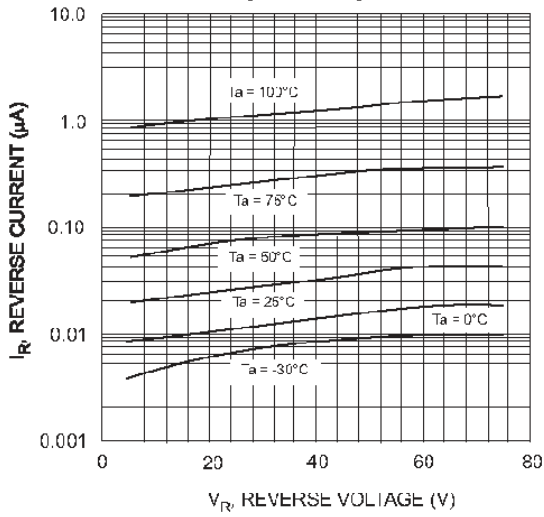


Fig. 3 Typical Reverse Characteristics

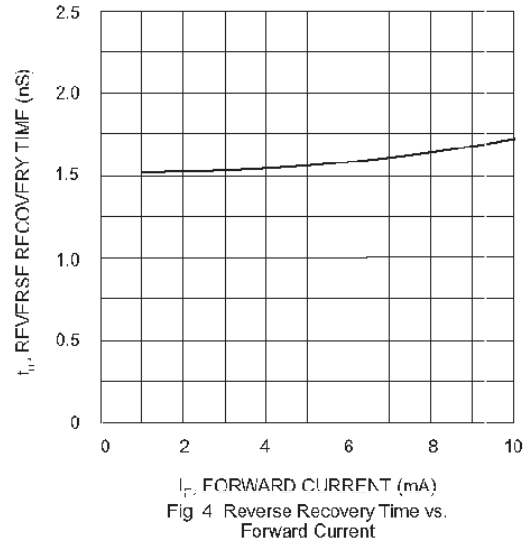
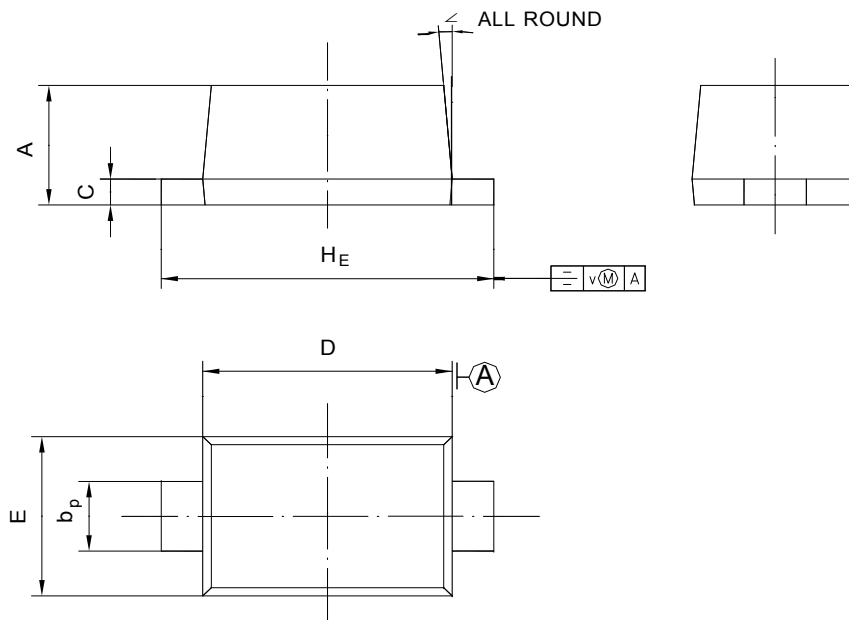


Fig. 4 Reverse Recovery Time vs. Forward Current

## PACKAGE OUTLINE

SOD-523

Plastic surface mounted package; 2 leads



| UNIT | A            | b <sub>p</sub> | C              | D            | E            | H <sub>E</sub> | V   | ∠  |
|------|--------------|----------------|----------------|--------------|--------------|----------------|-----|----|
| mm   | 0.70<br>0.60 | 0.4<br>0.3     | 0.135<br>0.100 | 1.25<br>1.15 | 0.85<br>0.75 | 1.7<br>1.5     | 0.1 | 5° |

单击下面可查看定价，库存，交付和生命周期等信息

[>>SHIKUES\(时科\)](#)