

# SiT8208

## Ultra Performance Oscillator



### Features

- Any frequency between 1 and 80 MHz accurate to 6 decimal places
- 100% pin-to-pin drop-in replacement to quartz-based oscillators
- Ultra low phase jitter: 0.5 ps (12 kHz to 20 MHz)
- Frequency stability as low as  $\pm 10$  PPM
- Industrial or extended commercial temperature range
- LVC MOS/LVTTL compatible output
- Standard 4-pin packages: 2.5 x 2.0, 3.2 x 2.5, 5.0 x 3.2, 7.0 x 5.0 mm x mm
- Instant samples with [Time Machine II](#) and [field programmable oscillators](#)
- Outstanding silicon reliability of 2 FIT or 500 million hour MTBF
- Pb-free, RoHS and REACH compliant
- Ultra short lead time

### Applications

- SATA, SAS, Ethernet, PCI Express, video, WiFi
- Computing, storage, networking, telecom, industrial control



### Electrical Characteristics<sup>[1]</sup>

| Parameter                                     | Symbol  | Min. | Typ. | Max. | Unit | Condition                                                                                                               |
|-----------------------------------------------|---------|------|------|------|------|-------------------------------------------------------------------------------------------------------------------------|
| <b>Frequency Range</b>                        |         |      |      |      |      |                                                                                                                         |
| Output Frequency Range                        | f       | 1    | –    | 80   | MHz  |                                                                                                                         |
| <b>Frequency Stability and Aging</b>          |         |      |      |      |      |                                                                                                                         |
| Frequency Stability                           | F_stab  | -10  | –    | +10  | PPM  | Inclusive of Initial tolerance at 25 °C, and variations over operating temperature, rated power supply voltage and load |
|                                               |         | -20  | –    | +20  | PPM  |                                                                                                                         |
|                                               |         | -25  | –    | +25  | PPM  |                                                                                                                         |
|                                               |         | -50  | –    | +50  | PPM  |                                                                                                                         |
| First year Aging                              | F_aging | -1.5 | –    | +1.5 | PPM  | 25°C                                                                                                                    |
| 10-year Aging                                 |         | -5   | –    | +5   | PPM  | 25°C                                                                                                                    |
| <b>Operating Temperature Range</b>            |         |      |      |      |      |                                                                                                                         |
| Operating Temperature Range                   | T_use   | -20  | –    | +70  | °C   | Extended Commercial                                                                                                     |
|                                               |         | -40  | –    | +85  | °C   | Industrial                                                                                                              |
| <b>Supply Voltage and Current Consumption</b> |         |      |      |      |      |                                                                                                                         |
| Supply Voltage                                | Vdd     | 1.71 | 1.8  | 1.89 | V    | Supply voltages between 2.5V and 3.3V can be supported. Contact <a href="#">SiTime</a> for additional information.      |
|                                               |         | 2.25 | 2.5  | 2.75 | V    |                                                                                                                         |
|                                               |         | 2.52 | 2.8  | 3.08 | V    |                                                                                                                         |
|                                               |         | 2.97 | 3.3  | 3.63 | V    |                                                                                                                         |
| Current Consumption                           | Idd     | –    | 31   | 33   | mA   | No load condition, f = 20 MHz, Vdd = 2.5V, 2.8V or 3.3V                                                                 |
|                                               |         | –    | 29   | 31   | mA   | No load condition, f = 20 MHz, Vdd = 1.8V                                                                               |
| OE Disable Current                            | I_OD    | –    | –    | 31   | mA   | Vdd = 2.5V, 2.8V or 3.3V, OE = GND, output is Weakly Pulled Down                                                        |
|                                               |         | –    | –    | 30   | mA   | Vdd = 1.8 V. OE = GND, output is Weakly Pulled Down                                                                     |
| Standby Current                               | I_std   | –    | –    | 70   | μA   | Vdd = 2.5V, 2.8V or 3.3V, $\overline{ST}$ = GND, output is Weakly Pulled Down                                           |
|                                               |         | –    | –    | 10   | μA   | Vdd = 1.8 V. $\overline{ST}$ = GND, output is Weakly Pulled Down                                                        |
| <b>LVC MOS Output Characteristics</b>         |         |      |      |      |      |                                                                                                                         |
| Duty Cycle                                    | DC      | 45   | –    | 55   | %    |                                                                                                                         |
| Rise/Fall Time                                | Tr, Tf  | –    | 1.2  | 2    | ns   | 15 pF load, 10% - 90% Vdd                                                                                               |
| Output Voltage High                           | VOH     | 90%  | –    | –    | Vdd  | IOH = -6 mA, IOL = 6 mA, (Vdd = 3.3V, 2.8V, 2.5V)                                                                       |
| Output Voltage Low                            | VOL     | –    | –    | 10%  | Vdd  | IOH = -3 mA, IOL = 3 mA, (Vdd = 1.8V)                                                                                   |
| <b>Input Characteristics</b>                  |         |      |      |      |      |                                                                                                                         |
| Input Voltage High                            | VIH     | 70%  | –    | –    | Vdd  | Pin 1, OE or $\overline{ST}$                                                                                            |
| Input Voltage Low                             | VIL     | –    | –    | 30%  | Vdd  | Pin 1, OE or $\overline{ST}$                                                                                            |
| Input Pull-up Impedance                       | Z_in    | –    | 100  | 250  | kΩ   | Pin 1, OE logic high or logic low, or $\overline{ST}$ logic high                                                        |
|                                               |         | 2    | –    | –    | MΩ   | Pin 1, $\overline{ST}$ logic low                                                                                        |

**Note:**

1. All electrical specifications in the above table are specified with 15 pF output load and for all Vdd(s) unless otherwise stated.

### Electrical Characteristics<sup>[1]</sup> (Continued)

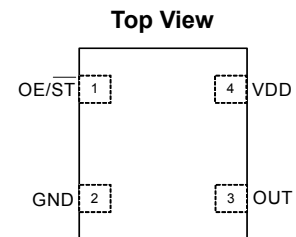
| Parameter                        | Symbol   | Min. | Typ. | Max. | Unit | Condition                                                                                             |
|----------------------------------|----------|------|------|------|------|-------------------------------------------------------------------------------------------------------|
| <b>Startup and Resume Timing</b> |          |      |      |      |      |                                                                                                       |
| Startup Time                     | T_start  | –    | 7    | 10   | ms   | Measured from the time Vdd reaches its rated minimum value                                            |
| OE Enable/Disable Time           | T_oe     | –    | –    | 150  | ns   | f = 80 MHz, For other frequencies, T_oe = 100 ns + 3 cycles                                           |
| Resume Time                      | T_resume | –    | 6    | 10   | ms   | In standby mode, measured from the time $\overline{ST}$ pin crosses 50% threshold. Refer to Figure 5. |
| <b>Jitter</b>                    |          |      |      |      |      |                                                                                                       |
| RMS Period Jitter                | T_jitt   | –    | 1.5  | 2    | ps   |                                                                                                       |
|                                  |          | –    | 2    | 3    | ps   | f = 75 MHz, Vdd = 1.8V                                                                                |
| RMS Phase Jitter (random)        | T_phj    | –    | 0.5  | 1    | ps   | f = 10 MHz, Integration bandwidth = 12 kHz to 20 MHz                                                  |

**Note:**

1. All electrical specifications in the above table are specified with 15 pF output load and for all Vdd(s) unless otherwise stated.

### Pin Configuration

| Pin | Symbol              | Functionality                                                                                                                                           |
|-----|---------------------|---------------------------------------------------------------------------------------------------------------------------------------------------------|
| 1   | OE/ $\overline{ST}$ | Output Enable<br>H or Open <sup>[2]</sup> : specified frequency output<br>L: output is high impedance. Only output driver is disabled.                  |
|     | Standby             | H or Open <sup>[2]</sup> : specified frequency output<br>L: output is low (weak pull down). Device goes to sleep mode. Supply current reduces to I_std. |
| 2   | GND                 | Power<br>Electrical ground <sup>[3]</sup>                                                                                                               |
| 3   | OUT                 | Output<br>Oscillator output                                                                                                                             |
| 4   | VDD                 | Power<br>Power supply voltage <sup>[3]</sup>                                                                                                            |



**Notes:**

2. A pull-up resistor of <10 k $\Omega$  between OE/ $\overline{ST}$  pin and Vdd is recommended in high noise environment.
3. A capacitor of value 0.1  $\mu$ F between Vdd and GND is recommended.

### Absolute Maximum

Attempted operation outside the absolute maximum ratings of the part may cause permanent damage to the part. Actual performance of the IC is only guaranteed within the operational specifications, not at absolute maximum ratings.

| Parameter                                                            | Min. | Max. | Unit |
|----------------------------------------------------------------------|------|------|------|
| Storage Temperature                                                  | -65  | 150  | °C   |
| VDD                                                                  | -0.5 | 4    | V    |
| Electrostatic Discharge                                              | –    | 2000 | V    |
| Soldering Temperature (follow standard Pb free soldering guidelines) | –    | 260  | °C   |
| Junction Temperature                                                 | –    | 150  | °C   |

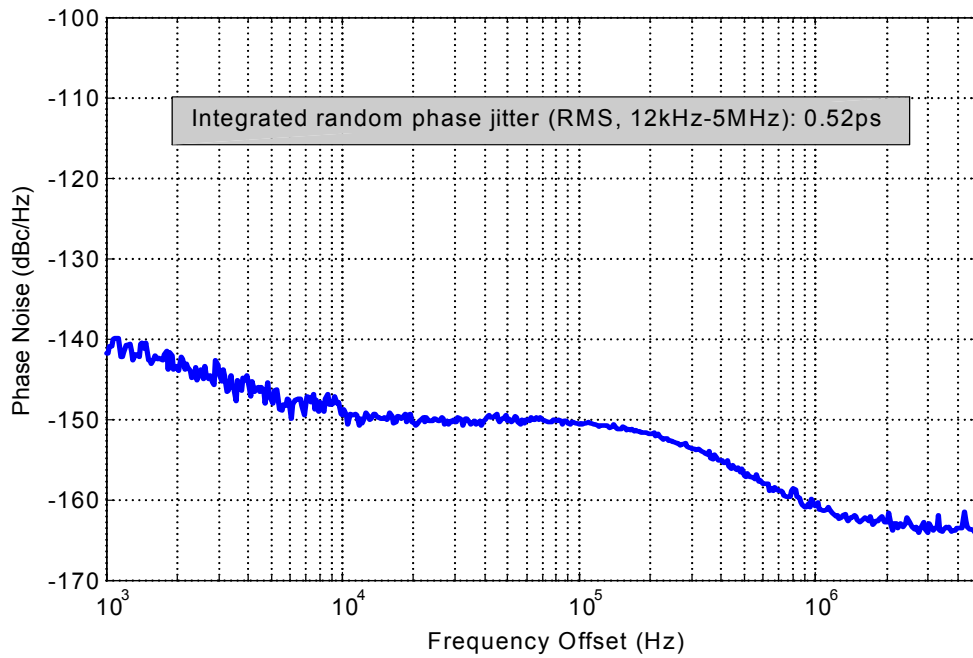
### Thermal Consideration

| Package | $\theta$ JA, 4 Layer Board (°C/W) | $\theta$ JA, 2 Layer Board (°C/W) | $\theta$ JC, Bottom (°C/W) |
|---------|-----------------------------------|-----------------------------------|----------------------------|
| 7050    | 191                               | 263                               | 30                         |
| 5032    | 97                                | 199                               | 24                         |
| 3225    | 109                               | 212                               | 27                         |
| 2520    | 117                               | 222                               | 26                         |

### Environmental Compliance

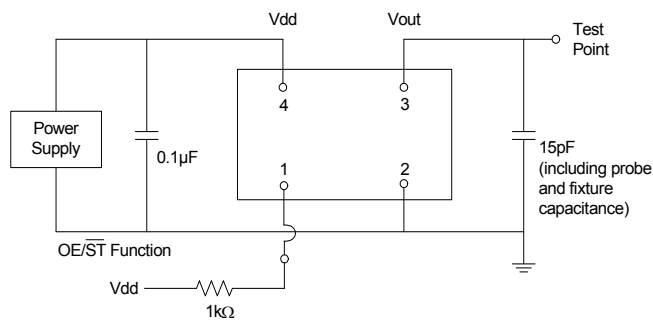
| Parameter                  | Condition/Test Method     |
|----------------------------|---------------------------|
| Mechanical Shock           | MIL-STD-883F, Method 2002 |
| Mechanical Vibration       | MIL-STD-883F, Method 2007 |
| Temperature Cycle          | JESD22, Method A104       |
| Solderability              | MIL-STD-883F, Method 2003 |
| Moisture Sensitivity Level | MSL1 @ 260°C              |

**Phase Noise Plot**

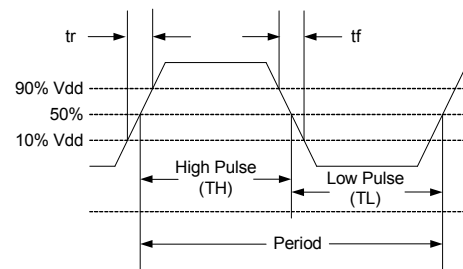


**Figure 1. Phase Noise, 10 MHz, 3.3V, LVCMOS Output**

**Test Circuit and Waveform**



**Figure 2. Test Circuit**



**Figure 3. Waveform**

**Notes:**

- 4. Duty Cycle is computed as Duty Cycle = TH/Period.
- 5. SiT8208 supports the configurable duty cycle feature. For custom duty cycle at any given frequency, contact [SiTime](http://www.sitime.com).

### Timing Diagram

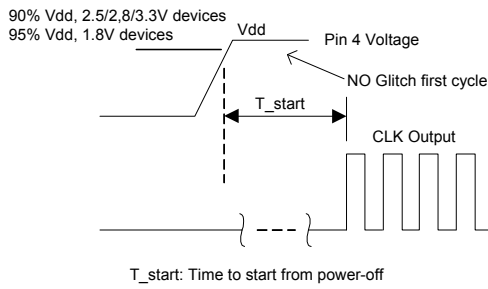


Figure 4. Startup Timing (OE/ST Mode)

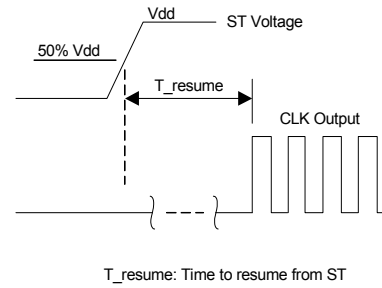


Figure 5. Standby Resume Timing (ST Mode Only)

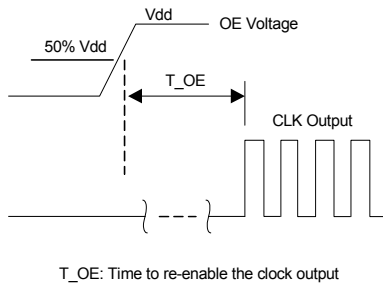


Figure 6. OE Enable Timing (OE Mode Only)

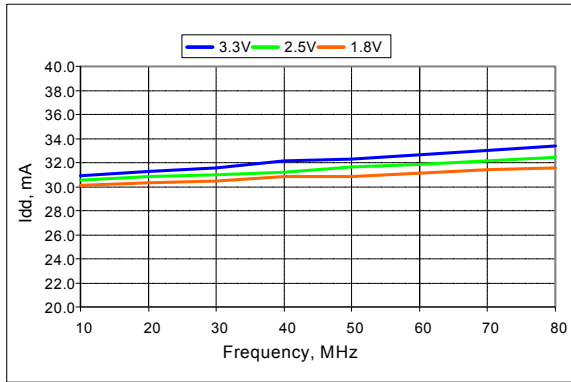


Figure 7. OE Disable Timing (OE Mode Only)

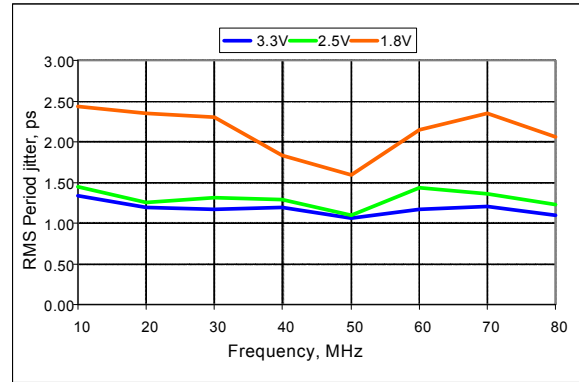
**Notes:**

- 6. SiT8208 supports NO RUNT pulses and No glitches during startup or resume.
- 7. SiT8208 supports gated output which is accurate within rated frequency stability from the first cycle.

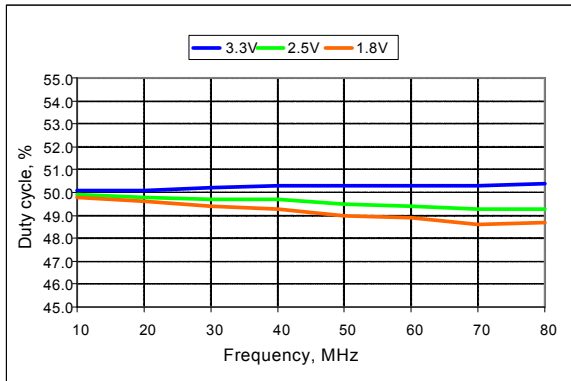
**Performance Plots**



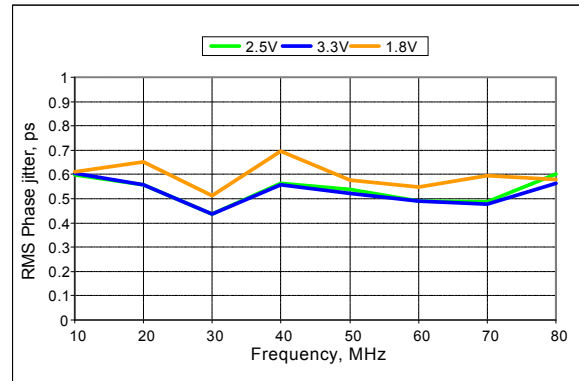
**Figure 8. Idd vs Frequency**



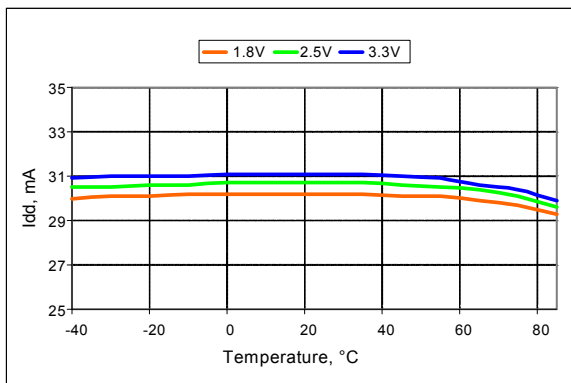
**Figure 9. RMS Period Jitter vs Frequency**



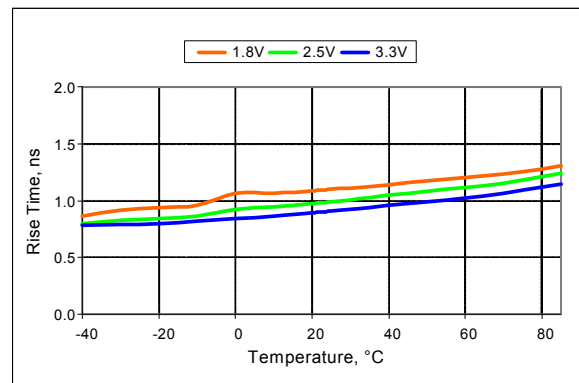
**Figure 10. Duty Cycle vs Frequency**



**Figure 11. RMS Phase Jitter vs Frequency**



**Figure 12. Idd vs Temperature, 10 MHz Output**



**Figure 13. Rise Time vs Temperature, 75 MHz Output**

**Note:**

8. All plots are measured with 15 pF load at room temperature, unless otherwise stated.

### Programmable Drive Strength

The SiT8208 includes a programmable drive strength feature to provide a simple, flexible tool to optimize the clock rise/fall time for specific applications. Benefits from the programmable drive strength feature are:

- Improves system radiated electromagnetic interference (EMI) by slowing down the clock rise/fall time
- Improves the downstream clock receiver's (RX) jitter by decreasing (speeding up) the clock rise/fall time.
- Ability to drive large capacitive loads while maintaining full swing with sharp edge rates.

For more detailed information about rise/fall time control and drive strength selection, see the SiTime Applications Note section; <http://www.sitime.com/support/application-notes>.

### EMI Reduction by Slowing Rise/Fall Time

Figure 14 shows the harmonic power reduction as the rise/fall times are increased (slowed down). The rise/fall times are expressed as a ratio of the clock period. For the ratio of 0.05, the signal is very close to a square wave. For the ratio of 0.45, the rise/fall times are very close to near-triangular waveform. These results, for example, show that the 11th clock harmonic can be reduced by 35 dB if the rise/fall edge is increased from 5% of the period to 45% of the period.

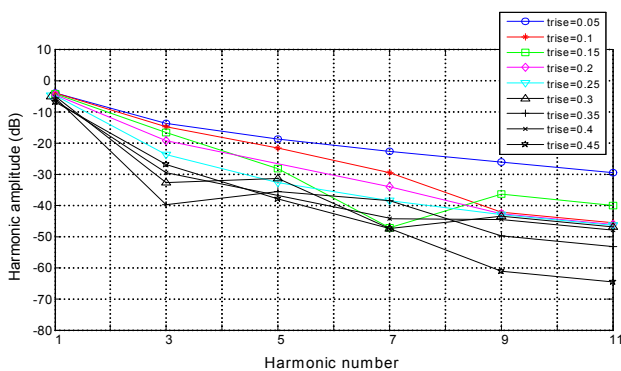


Figure 14. Harmonic EMI reduction as a Function of Slower Rise/Fall Time

### Jitter Reduction with Faster Rise/Fall Time

Power supply noise can be a source of jitter for the downstream chipset. One way to reduce this jitter is to increase rise/fall time (edge rate) of the input clock. Some chipsets would require faster rise/fall time in order to reduce their sensitivity to this type of jitter. The SiT8208 provides up to 3 additional high drive strength settings for very fast rise/fall time. Refer to the Rise/Fall Time Tables to determine the proper drive strength.

### High Output Load Capability

The rise/fall time of the input clock varies as a function of the actual capacitive load the clock drives. At any given drive strength, the rise/fall time becomes slower as the output load increases. As an example, for a 3.3V SiT8208 device with default drive strength setting, the typical rise/fall time is 1.15ns for 15 pF output load. The typical rise/fall time slows down to 2.72ns when the output load increases to 45 pF. One can

choose to speed up the rise/fall time to 1.41ns by then increasing the drive strength setting on the SiT8208.

The SiT8208 can support up to 60 pF or higher in maximum capacitive loads with up to 3 additional drive strength settings. Refer to the Rise/Fall Time Tables to determine the proper drive strength for the desired combination of output load vs. rise/fall time

### SiT8208 Drive Strength Selection

Tables 1 through 5 define the rise/fall time for a given capacitive load and supply voltage.

1. Select the table that matches the SiT8208 nominal supply voltage (1.8V, 2.5V, 2.8V, 3.0V, 3.3V).
2. Select the capacitive load column that matches the application requirement (5 pF to 60 pF)
3. Under the capacitive load column, select the desired rise/fall times.
4. The left-most column represents the part number code for the corresponding drive strength.
5. Add the drive strength code to the part number for ordering purposes.

### Calculating Maximum Frequency

Based on the rise and fall time data given in Tables 1 through 4, the maximum frequency the oscillator can operate with guaranteed full swing of the output voltage over temperature as follows:

$$\text{Max Frequency} = \frac{1}{6 \times (\text{Trise})}$$

### Example 1

Calculate  $f_{\text{MAX}}$  for the following condition:

- Vdd = 1.8V (Table 1)
- Capacitive Load: 30 pF
- Desired Tr/f time = 3 ns (rise/fall time part number code = G)

Part number for the above example:

SiT8208AIGG2-18E-55.500000



Drive strength code is inserted here. Default setting is “-”

**Rise/Fall Time (10% to 90%) vs C<sub>LOAD</sub> Tables**

| Rise/Fall Time Typ (ns)            |       |       |       |       |       |
|------------------------------------|-------|-------|-------|-------|-------|
| Drive Strength \ C <sub>LOAD</sub> | 5 pF  | 15 pF | 30 pF | 45 pF | 60 pF |
| L                                  | 12.45 | 17.68 | 19.48 | 46.21 | 57.82 |
| A                                  | 6.50  | 10.27 | 16.21 | 23.92 | 30.73 |
| R                                  | 4.38  | 7.05  | 11.61 | 16.17 | 20.83 |
| B                                  | 3.27  | 5.30  | 8.89  | 12.18 | 15.75 |
| S                                  | 2.62  | 4.25  | 7.20  | 9.81  | 12.65 |
| D                                  | 2.19  | 3.52  | 6.00  | 8.31  | 10.59 |
| T                                  | 1.76  | 3.01  | 5.14  | 7.10  | 9.15  |
| E                                  | 1.59  | 2.59  | 4.49  | 6.25  | 7.98  |
| U                                  | 1.49  | 2.28  | 3.96  | 5.55  | 7.15  |
| F                                  | 1.22  | 2.10  | 3.57  | 5.00  | 6.46  |
| W                                  | 1.07  | 1.88  | 3.23  | 4.50  | 5.87  |
| G                                  | 1.01  | 1.64  | 2.95  | 4.12  | 5.40  |
| X                                  | 0.96  | 1.50  | 2.74  | 3.80  | 4.98  |
| K                                  | 0.92  | 1.41  | 2.56  | 3.52  | 4.64  |
| Y                                  | 0.88  | 1.34  | 2.39  | 3.25  | 4.32  |
| Q                                  | 0.86  | 1.29  | 2.24  | 3.04  | 4.06  |
| Z or "-": Default                  | 0.82  | 1.24  | 2.07  | 2.89  | 3.82  |
| M                                  | 0.77  | 1.20  | 1.94  | 2.72  | 3.61  |
| N                                  | 0.66  | 1.15  | 1.84  | 2.58  | 3.41  |
| P                                  | 0.51  | 1.09  | 1.76  | 2.45  | 3.24  |

**Table 1. V<sub>dd</sub> = 1.8V Rise/Fall Times for Specific C<sub>LOAD</sub>**

| Rise/Fall Time Typ (ns)            |      |       |       |       |       |
|------------------------------------|------|-------|-------|-------|-------|
| Drive Strength \ C <sub>LOAD</sub> | 5 pF | 15 pF | 30 pF | 45 pF | 60 pF |
| L                                  | 8.68 | 13.59 | 18.36 | 32.70 | 42.06 |
| A                                  | 4.42 | 7.18  | 11.93 | 16.60 | 21.38 |
| R                                  | 2.93 | 4.78  | 8.15  | 11.19 | 14.59 |
| B                                  | 2.21 | 3.57  | 6.19  | 8.55  | 11.04 |
| S                                  | 1.67 | 2.87  | 4.94  | 6.85  | 8.80  |
| D                                  | 1.50 | 2.33  | 4.11  | 5.68  | 7.33  |
| T                                  | 1.06 | 2.04  | 3.50  | 4.84  | 6.26  |
| E                                  | 0.98 | 1.69  | 3.03  | 4.20  | 5.51  |
| U                                  | 0.93 | 1.48  | 2.69  | 3.73  | 4.92  |
| F                                  | 0.90 | 1.37  | 2.44  | 3.34  | 4.42  |
| W                                  | 0.87 | 1.29  | 2.21  | 3.04  | 4.02  |
| G or "-": Default                  | 0.67 | 1.20  | 2.00  | 2.79  | 3.69  |
| X                                  | 0.44 | 1.10  | 1.86  | 2.56  | 3.43  |
| K                                  | 0.38 | 0.99  | 1.76  | 2.37  | 3.18  |
| Y                                  | 0.36 | 0.83  | 1.66  | 2.20  | 2.98  |
| Q                                  | 0.34 | 0.71  | 1.58  | 2.07  | 2.80  |
| Z                                  | 0.33 | 0.65  | 1.51  | 1.95  | 2.65  |
| M                                  | 0.32 | 0.62  | 1.44  | 1.85  | 2.50  |
| N                                  | 0.31 | 0.59  | 1.37  | 1.77  | 2.39  |
| P                                  | 0.30 | 0.57  | 1.29  | 1.70  | 2.28  |

**Table 2. V<sub>dd</sub> = 2.5V Rise/Fall Times for Specific C<sub>LOAD</sub>**

| Rise/Fall Time Typ (ns)            |      |       |       |       |       |
|------------------------------------|------|-------|-------|-------|-------|
| Drive Strength \ C <sub>LOAD</sub> | 5 pF | 15 pF | 30 pF | 45 pF | 60 pF |
| L                                  | 7.93 | 12.69 | 17.94 | 30.10 | 38.89 |
| A                                  | 4.06 | 6.66  | 11.04 | 15.31 | 19.80 |
| R                                  | 2.68 | 4.40  | 7.53  | 10.29 | 13.37 |
| B                                  | 2.00 | 3.25  | 5.66  | 7.84  | 10.11 |
| S                                  | 1.59 | 2.57  | 4.54  | 6.27  | 8.07  |
| D                                  | 1.19 | 2.14  | 3.76  | 5.21  | 6.72  |
| T                                  | 1.00 | 1.79  | 3.20  | 4.43  | 5.77  |
| E                                  | 0.94 | 1.51  | 2.78  | 3.84  | 5.06  |
| U                                  | 0.90 | 1.38  | 2.48  | 3.40  | 4.50  |
| F                                  | 0.87 | 1.29  | 2.21  | 3.03  | 4.05  |
| W                                  | 0.62 | 1.19  | 1.99  | 2.76  | 3.68  |
| G or "-": Default                  | 0.41 | 1.08  | 1.84  | 2.52  | 3.36  |
| X                                  | 0.37 | 0.96  | 1.72  | 2.33  | 3.15  |
| K                                  | 0.35 | 0.78  | 1.63  | 2.15  | 2.92  |
| Y                                  | 0.33 | 0.67  | 1.54  | 2.00  | 2.75  |
| Q                                  | 0.32 | 0.63  | 1.46  | 1.89  | 2.57  |
| Z                                  | 0.31 | 0.60  | 1.39  | 1.80  | 2.43  |
| M                                  | 0.30 | 0.57  | 1.31  | 1.72  | 2.30  |
| N                                  | 0.30 | 0.56  | 1.22  | 1.63  | 2.22  |
| P                                  | 0.29 | 0.54  | 1.13  | 1.55  | 2.13  |

**Table 3. V<sub>dd</sub> = 2.8V Rise/Fall Times for Specific C<sub>LOAD</sub>**

| Rise/Fall Time Typ (ns)            |      |       |       |       |       |
|------------------------------------|------|-------|-------|-------|-------|
| Drive Strength \ C <sub>LOAD</sub> | 5 pF | 15 pF | 30 pF | 45 pF | 60 pF |
| L                                  | 7.18 | 11.59 | 17.24 | 27.57 | 35.57 |
| A                                  | 3.61 | 6.02  | 10.19 | 13.98 | 18.10 |
| R                                  | 2.31 | 3.95  | 6.88  | 9.42  | 12.24 |
| B                                  | 1.65 | 2.92  | 5.12  | 7.10  | 9.17  |
| S                                  | 1.43 | 2.26  | 4.09  | 5.66  | 7.34  |
| D                                  | 1.01 | 1.91  | 3.38  | 4.69  | 6.14  |
| T                                  | 0.94 | 1.51  | 2.86  | 3.97  | 5.25  |
| E                                  | 0.90 | 1.36  | 2.50  | 3.46  | 4.58  |
| U                                  | 0.86 | 1.25  | 2.21  | 3.03  | 4.07  |
| F or "-": Default                  | 0.48 | 1.15  | 1.95  | 2.72  | 3.65  |
| W                                  | 0.38 | 1.04  | 1.77  | 2.47  | 3.31  |
| G                                  | 0.36 | 0.87  | 1.66  | 2.23  | 3.03  |
| X                                  | 0.34 | 0.70  | 1.56  | 2.04  | 2.80  |
| K                                  | 0.33 | 0.63  | 1.48  | 1.89  | 2.61  |
| Y                                  | 0.32 | 0.60  | 1.40  | 1.79  | 2.43  |
| Q                                  | 0.32 | 0.58  | 1.31  | 1.69  | 2.28  |
| Z                                  | 0.30 | 0.56  | 1.22  | 1.62  | 2.17  |
| M                                  | 0.30 | 0.55  | 1.12  | 1.54  | 2.07  |
| N                                  | 0.30 | 0.54  | 1.02  | 1.47  | 1.97  |
| P                                  | 0.29 | 0.52  | 0.95  | 1.41  | 1.90  |

**Table 4. V<sub>dd</sub> = 3.3V Rise/Fall Times for Specific C<sub>LOAD</sub>**

### Instant Samples with Time Machine and Field Programmable Oscillators

SiTime supports a field programmable version of the SiT8208 low power oscillator for fast prototyping and real time customization of features. The [field programmable devices](#) (FP devices) are available for all five standard SiT8208 package sizes and can be configured to one's exact specification using the [Time Machine II](#), an USB powered MEMS oscillator programmer.

#### Customizable Features of the SiT8208 FP Devices Include

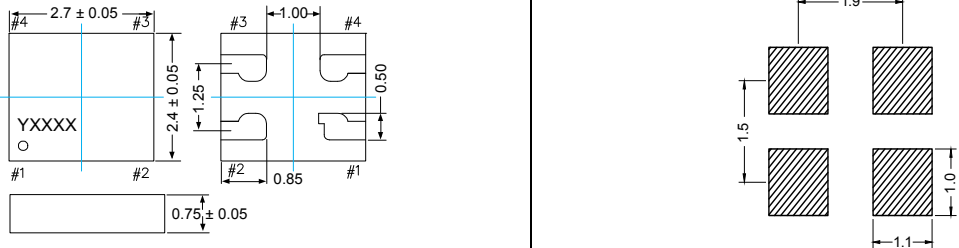
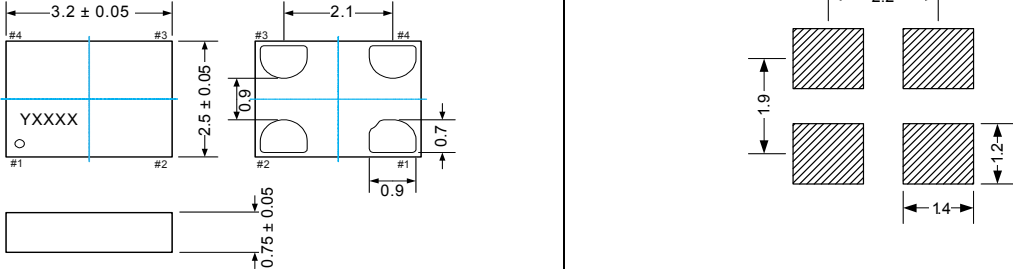
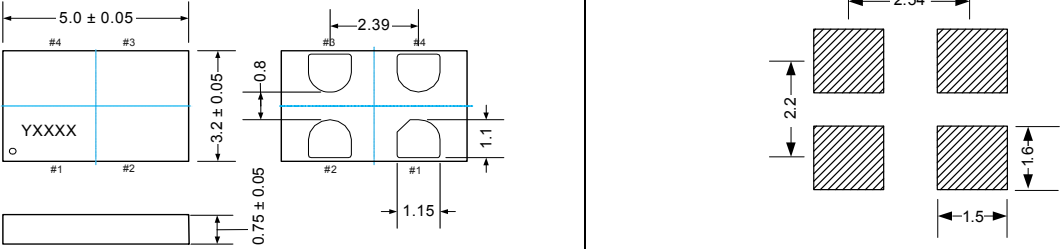
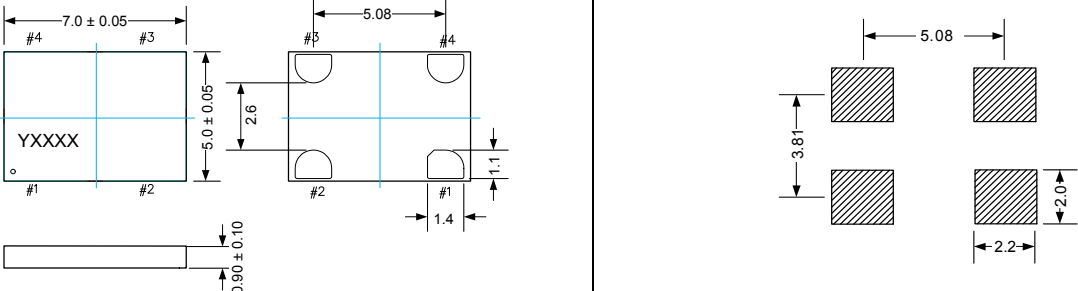
- Any frequency between 1 – 110 MHz
- Three frequency stability options,  $\pm 20$  PPM,  $\pm 25$  PPM,  $\pm 50$  PPM
- Two operating temperatures, -20 to 70°C or -40 to 85°C
- Five supply voltage options, 1.8V, 2.5V, 2.8V, 3.0V, and 3.3V
- Output drive strength

For more information regarding SiTime's field programmable solutions, visit <http://www.sitime.com/time-machine> and <http://www.sitime.com/fp-devices>.

SiT8208 is typically factory-programmed per customer ordering codes for volume delivery.



### Dimensions and Patterns

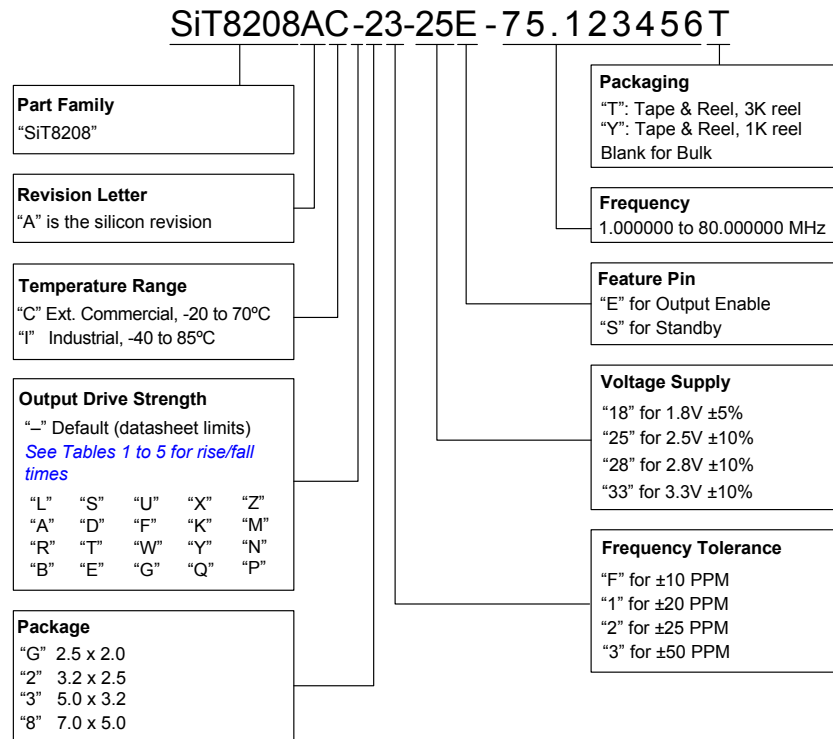
| Package Size – Dimensions (Unit: mm) <sup>[9]</sup>                                                                                                                                                                                                                                                                                                                                  | Recommended Land Pattern (Unit: mm) <sup>[10]</sup> |
|--------------------------------------------------------------------------------------------------------------------------------------------------------------------------------------------------------------------------------------------------------------------------------------------------------------------------------------------------------------------------------------|-----------------------------------------------------|
| <p><b>2.7 x 2.4 x 0.75 mm (100% compatible with 2.5 x 2.0 mm footprint)</b></p>  <p>Top view dimensions: 2.7 ± 0.05 mm (width), 2.4 ± 0.05 mm (height). Pin #1 to #4 locations are marked. Land pattern shows a 1.9 mm pitch between pads, with individual pad dimensions of 1.5 mm by 1.1 mm.</p> |                                                     |
| <p><b>3.2 x 2.5 x 0.75 mm</b></p>  <p>Top view dimensions: 3.2 ± 0.05 mm (width), 2.5 ± 0.05 mm (height). Pin #1 to #4 locations are marked. Land pattern shows a 2.2 mm pitch between pads, with individual pad dimensions of 1.9 mm by 1.2 mm.</p>                                              |                                                     |
| <p><b>5.0 x 3.2 x 0.75 mm</b></p>  <p>Top view dimensions: 5.0 ± 0.05 mm (width), 3.2 ± 0.05 mm (height). Pin #1 to #4 locations are marked. Land pattern shows a 2.54 mm pitch between pads, with individual pad dimensions of 2.2 mm by 1.6 mm.</p>                                            |                                                     |
| <p><b>7.0 x 5.0 x 0.90 mm</b></p>  <p>Top view dimensions: 7.0 ± 0.05 mm (width), 5.0 ± 0.05 mm (height). Pin #1 to #4 locations are marked. Land pattern shows a 5.08 mm pitch between pads, with individual pad dimensions of 3.81 mm by 2.0 mm.</p>                                           |                                                     |

**Notes:**

9. Top marking: Y denotes manufacturing origin and XXXX denotes manufacturing lot number. The value of “Y” will depend on the assembly location of the device.  
 10. A capacitor of value 0.1 μF between Vdd and GND is recommended.

### Ordering Information

The Part No. Guide is for reference only. To customize and build an exact part number, use the SiTime [Part Number Generator](#).



### Additional Information

| Document                              | Description                                                                                              | Download Link                                                                                                                                                                                                     |
|---------------------------------------|----------------------------------------------------------------------------------------------------------|-------------------------------------------------------------------------------------------------------------------------------------------------------------------------------------------------------------------|
| <b>Time Machine II</b>                | MEMS oscillator programmer                                                                               | <a href="http://www.sitime.com/support/time-machine-oscillator-programmer">http://www.sitime.com/support/time-machine-oscillator-programmer</a>                                                                   |
| <b>Field Programmable Oscillators</b> | Devices that can be programmable in the field by Time Machine II                                         | <a href="http://www.sitime.com/products/field-programmable-oscillators">http://www.sitime.com/products/field-programmable-oscillators</a>                                                                         |
| <b>Manufacturing Notes</b>            | Tape & Reel dimension, reflow profile and other manufacturing related info                               | <a href="http://www.sitime.com/component/docman/doc_download/85-manufacturing-notes-for-sitime-oscillators">http://www.sitime.com/component/docman/doc_download/85-manufacturing-notes-for-sitime-oscillators</a> |
| <b>Qualification Reports</b>          | RoHS report, reliability reports, composition reports                                                    | <a href="http://www.sitime.com/support/quality-and-reliability">http://www.sitime.com/support/quality-and-reliability</a>                                                                                         |
| <b>Performance Reports</b>            | Additional performance data such as phase noise, current consumption and jitter for selected frequencies | <a href="http://www.sitime.com/support/performance-measurement-report">http://www.sitime.com/support/performance-measurement-report</a>                                                                           |
| <b>Termination Techniques</b>         | Termination design recommendations                                                                       | <a href="http://www.sitime.com/support/application-notes">http://www.sitime.com/support/application-notes</a>                                                                                                     |
| <b>Layout Techniques</b>              | Layout recommendations                                                                                   | <a href="http://www.sitime.com/support/application-notes">http://www.sitime.com/support/application-notes</a>                                                                                                     |

© SiTime Corporation 2013. The information contained herein is subject to change at any time without notice. SiTime assumes no responsibility or liability for any loss, damage or defect of a Product which is caused in whole or in part by (i) use of any circuitry other than circuitry embodied in a SiTime product, (ii) misuse or abuse including static discharge, neglect or accident, (iii) unauthorized modification or repairs which have been soldered or altered during assembly and are not capable of being tested by SiTime under its normal test conditions, or (iv) improper installation, storage, handling, warehousing or transportation, or (v) being subjected to unusual physical, thermal, or electrical stress.

**Disclaimer:** SiTime makes no warranty of any kind, express or implied, with regard to this material, and specifically disclaims any and all express or implied warranties, either in fact or by operation of law, statutory or otherwise, including the implied warranties of merchantability and fitness for use or a particular purpose, and any implied warranty arising from course of dealing or usage of trade, as well as any common-law duties relating to accuracy or lack of negligence, with respect to this material, any SiTime product and any product documentation. Products sold by SiTime are not suitable or intended to be used in a life support application or component, to operate nuclear facilities, or in other mission critical applications where human life may be involved or at stake. All sales are made conditioned upon compliance with the critical uses policy set forth below.

**CRITICAL USE EXCLUSION POLICY**  
BUYER AGREES NOT TO USE SITIME'S PRODUCTS FOR ANY APPLICATION OR IN ANY COMPONENTS USED IN LIFE SUPPORT DEVICES OR TO OPERATE NUCLEAR FACILITIES OR FOR USE IN OTHER MISSION-CRITICAL APPLICATIONS OR COMPONENTS WHERE HUMAN LIFE OR PROPERTY MAY BE AT STAKE.

SiTime owns all rights, title and interest to the intellectual property related to SiTime's products, including any software, firmware, copyright, patent, or trademark. The sale of SiTime products does not convey or imply any license under patent or other rights. SiTime retains the copyright and trademark rights in all documents, catalogs and plans supplied pursuant to or ancillary to the sale of products or services by SiTime. Unless otherwise agreed to in writing by SiTime, any reproduction, modification, translation, compilation, or representation of this material shall be strictly prohibited.

单击下面可查看定价，库存，交付和生命周期等信息

[>>SiTime\(赛特时脉\)](#)

[>>点击查看相关商品](#)