

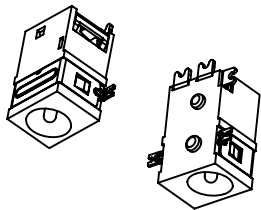
# CONNECTORS

**Operation:** 卧式/SMT 阻燃 3.6⊙大电流 DC 电源连接器 (Type-A)



**LTEM NO.:** DC-045B-\*\* (Series)

(L9.0×W6.0×H4.8 DC-CONNECTORS)



表面贴装 SMT

側向操作

精密部品 NICETY

可靠 STABILIZE

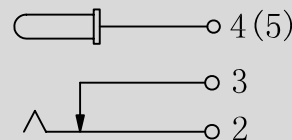
適合環保 RoHS

## Technical parameter

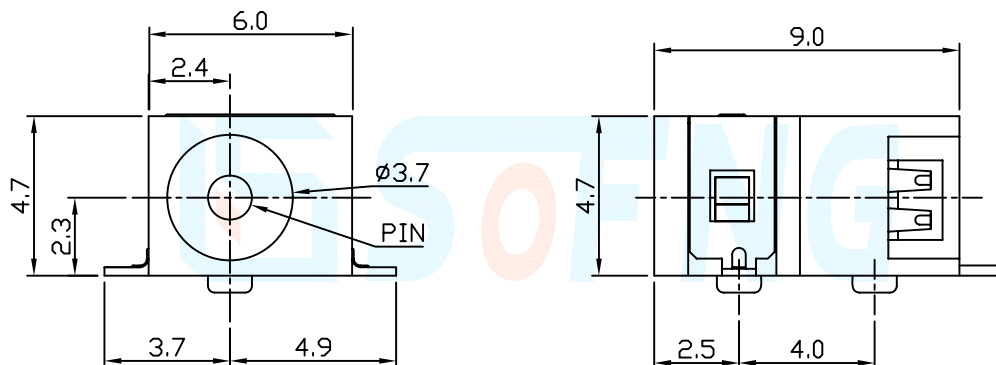
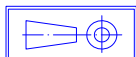
LEVEL		A[better product]	B[average product]
PROJECT			
	Contact Rating	0.5A, 30V DC	
Electrical	Initial Contact Resistance	50mΩ max.	
Properties	Insulation Resistance	100MΩ min.500V DC	Skey/PD: 100MΩ min.300V DC
	Withstand Voltage	500V AC for 1 minute	350 V AC for 1 minut
Durable Performance	There No Load	6,000 Cycles	5,000 Cycles
	Rated Load	5,000 Cycles	4,000 Cycles
	Storage temp.	-35℃~+75℃(Operating Temp: )	
	Operating Force	IF:35N MAX. (EF:10.0N MIN.)	
	Heat Rrsistance	IR Reflow:235℃, 5sec. Manual:350℃, 3sec.	

Material declaration		
No.	NAME	Description
① A	基座	PPA 热塑性塑胶 [黑色]
② B	动态端子	磷铜 C5191 [镀银] t=0.3
③ C	连接片	黄铜 C2680 [镀银/锡基 50u" min]
④ D	静态端子	黄铜 C2680 [镀银/锡基 50u" min]
⑤ E	内芯针	H62 黄铜 Φ 1.0/1.3 [镀银]
⑥ F	前盖外壳	磷铜 C5191 [镀镍] t=0.15

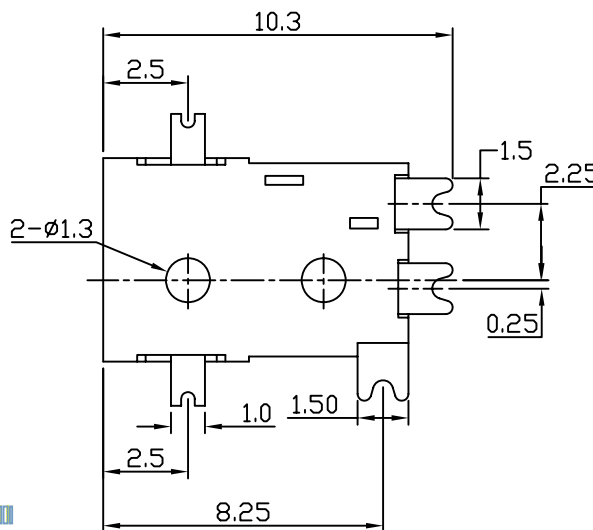
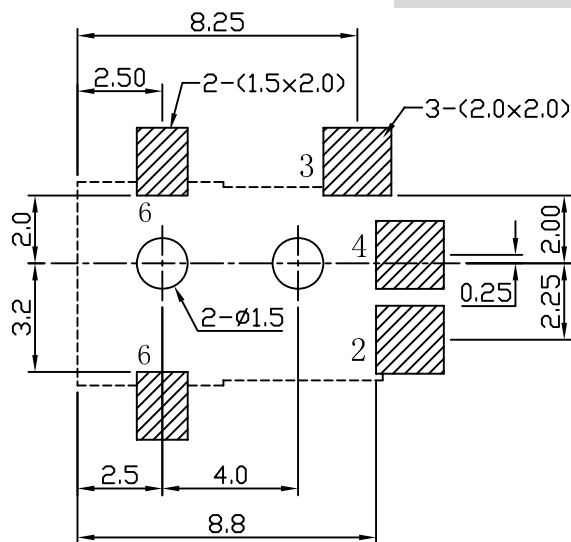
## CIRCUIT DIAGRAM



Unit:mm



## P.C.B LAYOUT



单击下面可查看定价，库存，交付和生命周期等信息

[>>SOFENG\(硕方\)](#)