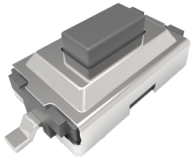


Operation: SMT/贴片式 中小型 轻触开关 [材质/力度可定制]



LTEM NO.: TS-1107S-** (Series)

(L6.0mm × W3.0mm × H2.6mm TACT-SWITCH)



Technical parameter

PROJECT	LEVEL	A[better product]	B[average product]
Electrical Properties	Contact Rating	25mA, 24V DC	
	Initial Contact Resistance	50mΩ max.	
Durable Performance	Insulation Resistance	100MΩ min.500V DC	Skey/PD: 100MΩ min.300V DC
	Withstand Voltage	500V AC for 1 minute	350 V AC for 1 minut
	There No Load	100,000 Cycles	65,000 Cycles
	Rated Load	85,000 Cycles	50,000 Cycles
	Storage temp.	-40℃~+85℃(Operating Temp:)	
	Operating Force	1.6 / 2.6N. (1N.=100gram-force)	
	Heat Rrsistance	IR Reflow:255℃, 5sec. Manual:350℃, 3sec.	

表面贴装 SMT

正向操作 DOWN

精密部品 NICETY

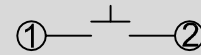
可靠 STABILIZE

適合環保 RoHS

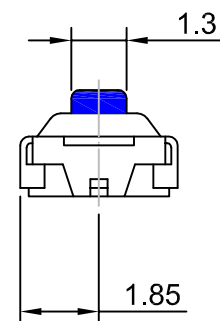
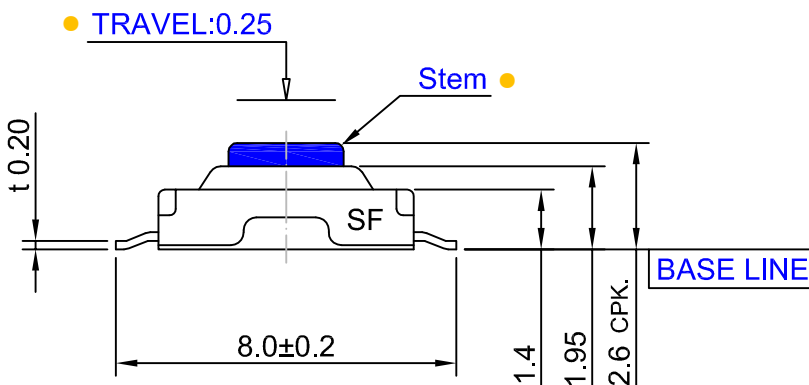
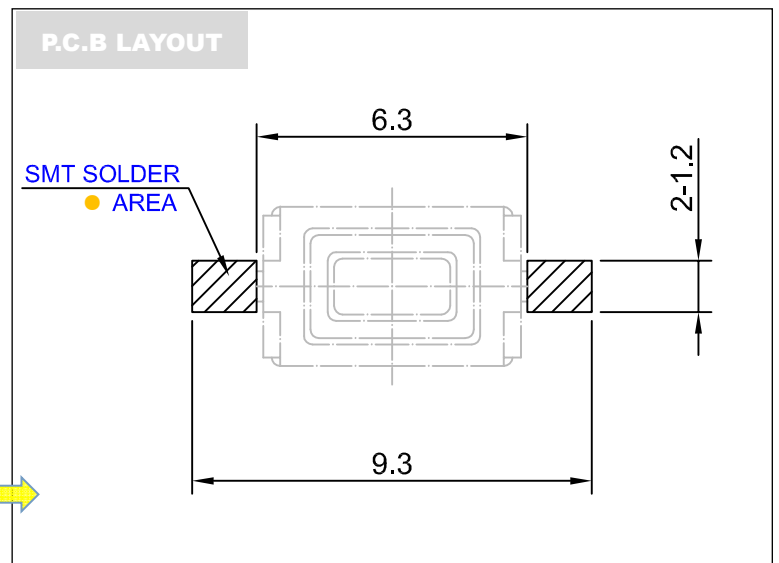
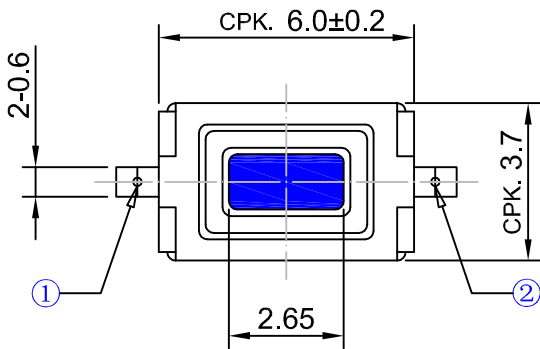
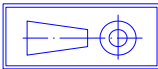
Material declaration

No.	NAME	Description
① A	拨柄	LCP 30%耐高温塑胶 UL94V-0
② B	基座	LCP 30%(Gray)耐高温塑胶 UL94V-0
③ C	盖板	不锈钢 Q235-A t=0.15mm
④ D	簧片	单面覆银&/不锈钢 SUS304
⑤ E	嵌件	镀银&C5191R-H 磷青铜[镀锡]
⑥ F	覆膜	PTFE 特氟龙

CIRCUIT DIAGRAM



Unit:mm



单击下面可查看定价，库存，交付和生命周期等信息

[>>SOFNG\(硕方\)](#)