

Specification

TO:STE

Model Name: Crystal Unit

PART NO: S3225-26.000M-20-20-20

CUSTOMER PART NO.:

APPROVAL SHEET 样品承认书

Approved?	Yes
	No.
Customer's comments are welcomed here.	
Pls return this copy as a certificate of your approval by email.	
Approved By	Date: _____

STRONG ELECTRONICS&TECHNOLOGY LIMITED

深圳市思硕电子科技有限公司

Tel:86-755-84528985 Fax: 86-755-84528986

Email:info@strongelectronics.net

www.sawfilter.cn

History Record

Date	Part No.	SPEC No.	Description.	Remarks.
<div style="background-color: #90EE90; padding: 2px; border: 1px solid black;"> RoHS Compliant Lead free Lead-free soldering </div>	ISO9001:2000 ISO14001:2004	Approved by	Check by	Design by
		May-15-2007	May-10-2005	Jan-16-1999
Reversions CU-002SDIP	Total Page	<i>Xu gang dong</i>	<i>Liu jun</i>	<i>Wang hon</i>

1.Range:

This specification shall cover the characteristics of Crystal Unit with Strong's P/N: S3225-26.000M-20-20-20

- ROHS Compliant (Pb Free)
- Small Seam sealed crystal units
- Surface Mount Package
- High precision characteristic covering up to high frequency range
- Higher frequency stability and reliability
- Tape and Reel packing available

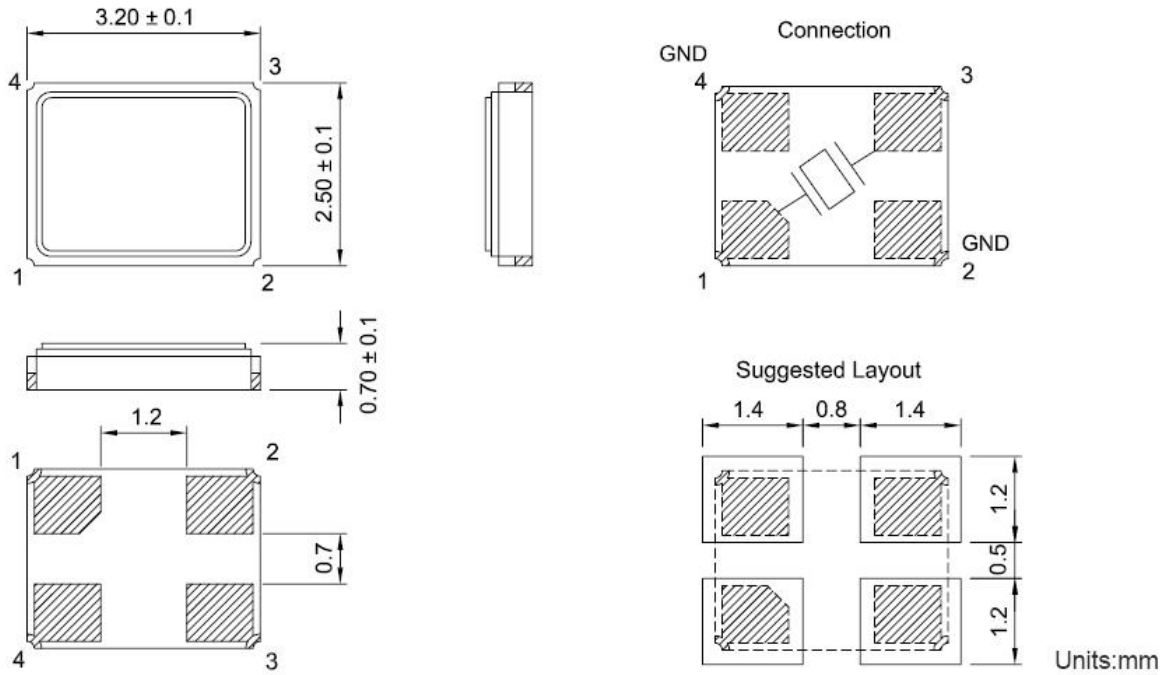
2.Specification

Item	Specification
Frequency Range	26.000MHz
Frequency Tolerance (at 25 °C)	±20ppm
Frquency Stability Over Operating Temperature Range	±20ppm
Operating Temperature Range	-20 ~ +70°C standard,
Shunt Capacitance	3.0pf Max
Load Capacitance	20pF
Drive Level	0.01μW ~ 300μW, 100μW typical
Storage Temperature Range	-40 ~ +85°C
Aging	± 3ppm / year Max

ESR

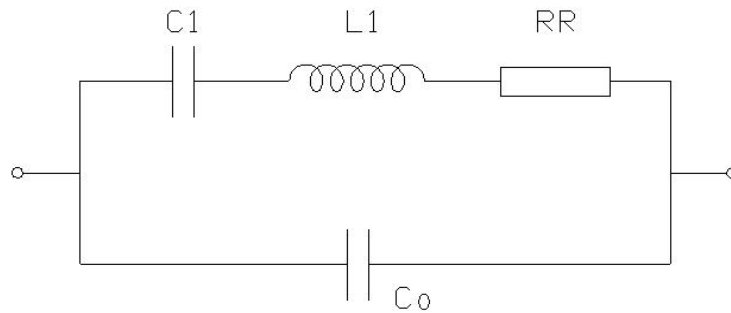
Frequency	Mode	ESR
10.0MHz	Fundamental	150 ohms max
11.0~11.9MHz	Fundamental	120 ohms max
12.0~12.9MHz	Fundamental	100 ohms max.
13.0~15.9MHz	Fundamental	80 ohms max.
16.0~20.9MHz	Fundamental	70 ohms max.
21.0~29.9MHz	Fundamental	60 ohms max.
30.0~60.0MHz	Fundamental	50 ohms max.
72.0~156.25MHz	3rd	100 ohms max.

3.Dimension (mm)



S3225-4 type 3.2mm*2.5mm

Equivalent Circuit:



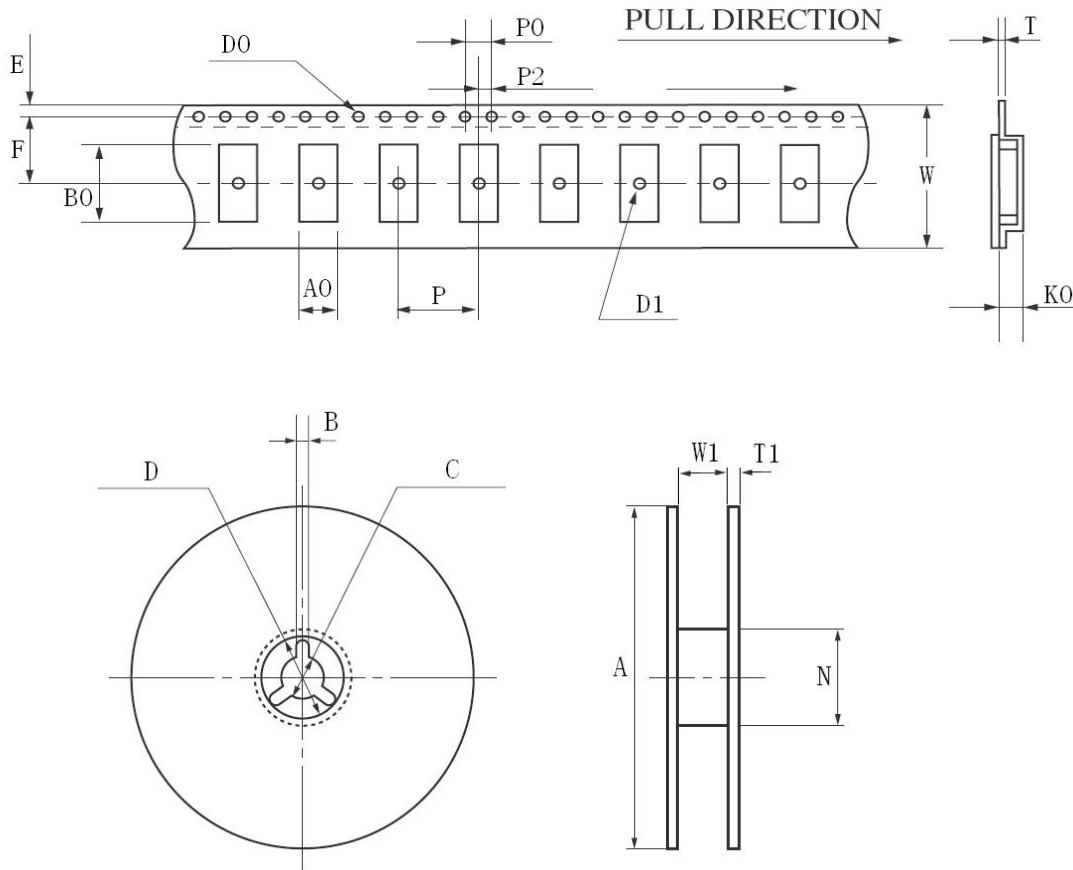
4. Marking

26.000Mhz

5. Reliability Specification

	Item	Condition	Standard
1.	Drop characteristics	Free drop from 75cm height on a hard wooden board for 3 times. (Board is thickness more than 30 mm.)	Frequency change: ≤±5ppm
2.	Mechanical shock	Device are shocked to half sine wave (1000g) three mutually perpendicular axes each 3 times	Frequency change: ≤±5ppm
3.	Shake characteristics	Shake frequency 10~55Hz, cyc1~2 minutes, swing 1.5mm, direction x/y/z, all 30 minutes, test after 1 hours.	Frequency change: ≤±5ppm
4.	Humidity characteristics	+40±2°C & 90%~95% R.H. 250 hours	Frequency change: ≤±5ppm
5.	Low temperature characteristics	-40±2°C, 250 hours, put in room temperature, test after 1 hours.	Frequency change: ≤±5ppm
6.	High temperature characteristics	+85±2°C, 250 hours, put in room temperature, test after 1 hours.	Frequency change: ≤±5ppm
7.	Temperature cycling	-30±3°C/30±3 min~+85±2°C/30±3min, 5 cycles	Frequency change: ≤±5ppm
8.	Refluence examination	<p>1- Max 180 sec 2- Max 10 sec 3- Max 80 sec 4- Max 90 sec</p>	Frequency change: ≤±5ppm

6. Packing Specification



	49S-SMD	S8045	S7050	S6035	S5032	S4025	S3225
W	24.00±0.30	16.00±0.05	16.00±0.05	12.00±0.05	12.00±0.05	12.00±0.05	12.00±0.05
E	1.75±0.10	1.75±0.10	1.75±0.10	1.75±0.10	1.75±0.10	1.75±0.10	1.75±0.10
F	11.5±0.10	7.5±0.10	7.5±0.10	5.5±0.10	5.5±0.10	5.5±0.10	5.5±0.10
T	0.40±0.05	0.35±0.05	0.35±0.05	0.35±0.05	0.35±0.05	0.35±0.05	0.30±0.05
P	12.00±0.10	8.00±0.10	8.00±0.10	8.00±0.10	8.00±0.10	8.00±0.10	8.00±0.10
P0	4.00±0.10	4.00±0.10	4.00±0.10	4.00±0.10	4.00±0.10	4.00±0.10	4.00±0.10
P2	2.00±0.10	2.00±0.10	2.00±0.10	2.00±0.10	2.00±0.10	2.00±0.10	2.00±0.10
D0	φ1.50+0.10	φ1.50+0.10	φ1.50+0.10	φ1.50+0.10	φ1.50+0.10	φ1.50+0.10	φ1.50+0.10
D1	φ1.50MIN	φ1.50MIN	φ1.50MIN	φ1.50MIN	φ1.50MIN	φ1.50MIN	φ1.50MIN
A0	4.60±0.10	4.85±0.10	5.40±0.10	3.90±0.10	3.60±0.10	2.80±0.10	2.85±0.10
K0	4.40±0.10	1.90±0.10	1.80±0.10	1.50±0.10	1.10±0.10	0.90±0.10	0.85±0.10
B0	14.20±0.15	8.60±0.15	7.40±0.10	6.40±0.10	5.40±0.10	4.30±0.10	3.55±0.10
A	φ330±1.0	φ178±2.0	φ178±2.0	φ178±2.0	φ178±2.0	φ178±2.0	φ178±2.0
B	2.30±0.20	2.00±0.50	2.00±0.50	2.00±0.50	2.00±0.50	2.00±0.50	2.00±0.50
C	φ13.5±0.20	φ13.2±0.20	φ13.2±0.20	φ13.2±0.20	φ13.2±0.20	φ13.2±0.20	φ13.2±0.20
D	φ21.5±0.20	φ20.0±0.50	φ20.0±0.50	φ20.0±0.50	φ20.0±0.50	φ20.0±0.50	φ20.0±0.50
N	φ100.0±0.5	φ60.5±1.0	φ60.5±1.0	φ60.5±1.0	φ60.5±1.0	φ60.5±1.0	φ60.5±1.0
W1	24.5±0.20	16.5±0.20	16.5±0.20	12.5±0.20	12.5±0.20	12.5±0.20	12.5±0.20
T1	2.30±0.20	1.80±0.20	1.80±0.20	1.80±0.20	1.80±0.20	1.80±0.20	1.80±0.20

© 2009 STRONG. All Rights Reserved.

单击下面可查看定价，库存，交付和生命周期等信息

[>>StrongFirst\(思硕\)](#)