

## SPECIFICATION

TO:STE

Model Name: SAW Resonator

**PART NO: SSR315N01F11**

CUSTOMER PART NO.:

### Approval sheet 样品承认书:

Approved?	Yes
	No.
Customer's comments are welcomed here.	
Pls return this copy as a certificate of your approval by email.	
Approved By	Date: _____

**STRONG ELECTRONICS&TECHNOLOGY LIMITED**

深圳市思硕电子科技有限公司

Service Hotline:86 755 84528985 Fax: 86 755 84528986

Email:info@strongelectronics.net

www.sawfilter.cn

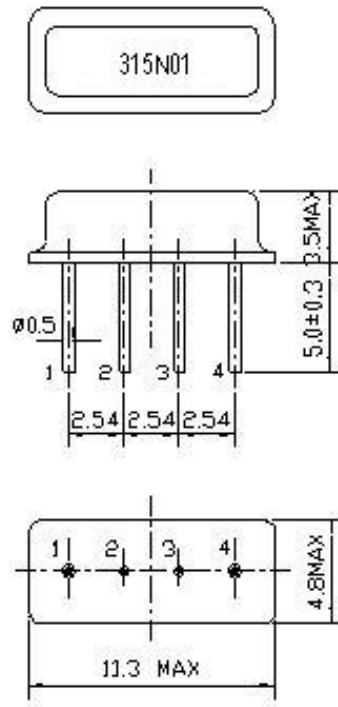
# History Record

Date	Part No.	SPEC No.	Description.	Remarks.
2012-3-28	SSR315N01F11		Initial issue	STE788
	ISO9001:2000 ISO14001:2004	<b>Approved by</b>	<b>Check by</b>	<b>Design by</b>
		May-15-2007	May-10-2005	Jan-16-1999
<b>Reversions</b>	<b>Total Page</b>	<i>Xu gang dong</i>	<i>Ai wei</i>	<i>Wang hong</i>
SRD-002L				

## 1. Package Dimension


(F11)

Unit: mm



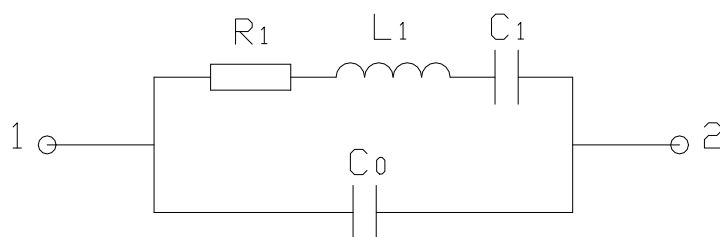
Pin No.	Function
Pin 1	Input
Pin 4	Output
Pin 2,3	Ground

## 2. Marking

 **315N01**

1. Black Ink Marking
2. N: Product Code
3. 01: One-port SAW Resonator
4. 315.00: Center Frequency

### 3. Equivalent LC Model



## 4. Performance

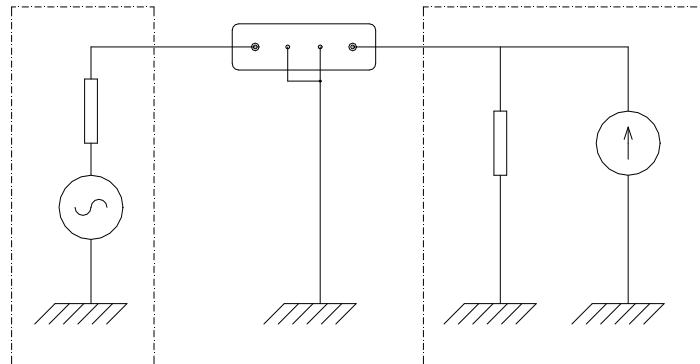
### 4.1 Maximum Rating

Item	Value
Operation Temperature Range	-40°C to +80°C
Storage Temperature Range	-45°C to +85°C
DC Voltage	10V
Source Power	0 dBm

### 4.2 Electronic Characteristics

Item	Units	Minimum	Typical	Maximum
Center Frequency (fo)	MHz	314.925	315.00	315.075
Insertion Loss	dB	—	1.5	2.0
Quality Factor				
Unloaded Q	—	—	11,000	—
50Ω Loaded Q	—	—	2,000	—
Temperature Stability				
Turnover Temperature	°C	—	25	—
Freq. Temp. Coefficient	ppm/°C	—	0.032	—
Frequency Aging	ppm/yr	—	<±10	—
DC Insulation Resistance	MΩ	1.0	—	—
RF Equivalent RLC Model				
Motional Resistance R1	Ω	—	18	26
Motional Inductance L1	μH	—	86	—
Motional Capacitance C1	fF	—	1.56	—
Shunt Static Capacitance C0	pF	1.7	2.0	2.3

### 4.3 Test Circuit



Note: Reference temperature shall be  $25 \pm 2^\circ\text{C}$ . However, the measurement may be carried out at  $5^\circ\text{C}$  to  $35^\circ\text{C}$  unless there is a dispute.

## 5. Reliability

### 5.1 Resistance to Soldering heat:

5.1.1 The components shall remain within the electrical specifications after it soldered on the 1mm-thickness PCB board and dipped in the solder at  $260^\circ\text{C} \pm 5^\circ\text{C}$  for  $10 \pm 1$  seconds.

5.1.2 The components shall remain within the electrical specifications after it soldered by electric iron, solder at  $350^\circ\text{C} \pm 10^\circ\text{C}$  for 3~4 seconds, recovery time :  $2\text{h} \pm 0.5\text{h}$ .

### 5.2 Thermal Shock:

The components shall remain within the electrical specifications after being kept at the condition of heat cycle conditions:  $T_A = -40^\circ\text{C} \pm 3^\circ\text{C}$ ,  $T_B = 85^\circ\text{C} \pm 2^\circ\text{C}$ ,  $t_1 = t_2 = 30\text{min}$ , switch time  $\leq 3\text{min}$  & cycle time : 100 times, recovery time :  $2\text{h} \pm 0.5\text{h}$ .

### 5.3 The Temperature Storage:

5.3.1 High Temperature Storage: The components shall remain within the electrical specifications after being kept at the  $85^\circ\text{C} \pm 2^\circ\text{C}$  for 500 hours, recovery time :  $2\text{h} \pm 0.5\text{h}$ .

5.3.2 Low Temperature Storage: The components shall remain within the electrical specifications after being kept at the  $-40^\circ\text{C} \pm 3^\circ\text{C}$  for 500 hours, recovery time :  $2\text{h} \pm 0.5\text{h}$ .

### 5.4 Humidity test:

The components shall remain within the electrical specifications after being kept at the condition of ambient temperature  $60^\circ\text{C} \pm 2^\circ\text{C}$ , and 90~95% RH for 500 hours.

### 5.5 Drop test:

The components shall remain within the electrical specifications after random free drops 10 times from height of 1.0 meter onto concrete floor, and the specimens shall meet the electrical specifications in table 5, external visual inspection.

**5.6 Solderability test:**

at the condition of temperature  $245^{\circ}\text{C} \pm 5^{\circ}\text{C}$  Depth: DIP 2/3 , SMD 1/5, time: 3.0s-5.0s, 80% or more of the immersed surface shall be covered with solder and well-proportioned.

**5.7 Vibration Fatigue:**

The components shall remain within the electrical specifications after loaded vibration at 10~55Hz, amplitude 1.5mm, X, Y, Z, direction, for 2 hours.

**5.8 Terminal strength:**

The force  $10 \pm 1$  seconds of 19.6N is applied to each terminal, and  $45^{\circ}$  in the same direction 2 times with 2N bending force (Exception: SMD)

**5.9 Mechanical Shock:**

The components shall remain within the electrical specifications after 1000 shocks, acceleration  $392 \text{ m/s}^2$ , duration 6ms.

**Note: As a result of the particularity of inner structure of SAW products, it easy to be breakdown by electrostatic, so we should pay attention to ESD protect in the test.**

**6. Remarks****6.1 Static voltage**

Static voltage between signal load & ground may cause deterioration & destruction of the component. Please avoid static voltage.

**6.2 Ultrasonic cleaning**

Ultrasonic vibration may cause deterioration & destruction of the component. Please avoid ultrasonic cleaning.

**6.3 Soldering**

Only leads of component may be soldered. Please avoid soldering another part of component.

**[© Copyright 2006 STRONG, All Rights Reserved](#)**

单击下面可查看定价，库存，交付和生命周期等信息

[>>StrongFirst\(思硕\)](#)