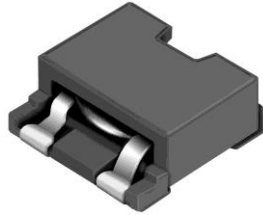


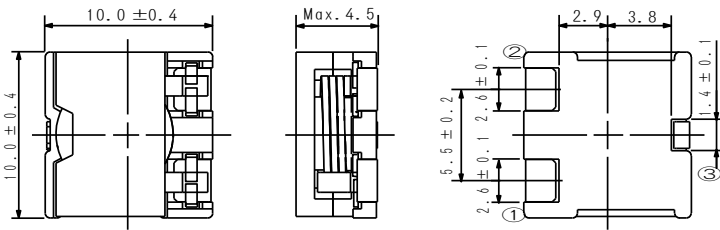
SMD Power Inductor CDEP104



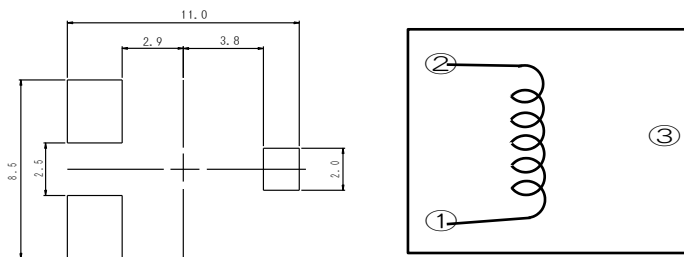
Description

- Ferrite core construction.
- Magnetically shielded.
- L × W × H: 10.4 × 10.4 × 4.5 mm Max.
- Product weight: 2.1g(Ref.)
- Moisture Sensitivity Level: 1
- RoHS compliance.

Dimension - [mm]



Land pattern and Schematics - [mm]



Environmental Data

- Operating temperature range: -40°C ~ +125°C (including coil's self temperature rise)
- Storage temperature range: -40°C ~ +125°C
- Solder reflow temperature: 260 °C peak.

Packaging

- Carrier tape and reel packaging
- 13.0" diameter reel
- 500pcs per reel

Applications

- Ideally used in portable computer CPU power supply

SMD Power Inductor CDEP104



ELECTRICAL CHARACTERISTICS-LOW D.C.R. TYPE

| PART NO. | STAMP | INDUCTANCE [WITHIN] ※1 | D.C.R. (mΩ) [MAX.] (at 20°C) | THE SATURATION CURRENT (A) ※2 | | TEMPERATURE RISE CURRENT (A) ※3 ΔT=40°C |
|--------------------|-------|---------------------------|------------------------------------|----------------------------------|-----------|--|
| | | | | (at 20°C) | (at100°C) | |
| CDEP1Ø4NP-ØR3NC-88 | 0R3NL | 0.36μH±30% | 2.2(1.8) | 24.2 | 20.8 | 18.0 |
| CDEP1Ø4NP-ØR8MC-88 | 0R8ML | 0.8μH±20% | 3.7(3.1) | 16.2 | 14.0 | 13.4 |
| CDEP1Ø4NP-1R4MC-88 | 1R4ML | 1.4μH±20% | 5.9(4.9) | 12.2 | 10.5 | 10.2 |
| CDEP1Ø4NP-2R2MC-88 | 2R2ML | 2.2μH±20% | 11.8(9.8) | 9.8 | 8.6 | 7.3 |
| CDEP1Ø4NP-3R2MC-88 | 3R2ML | 3.2μH±20% | 18.6(15.5) | 8.1 | 7.0 | 5.4 |
| CDEP1Ø4NP-4R3MC-88 | 4R3ML | 4.3μH±20% | 21.8(18.2) | 7.0 | 6.0 | 5.0 |

ELECTRICAL CHARACTERISTICS-STANDARD TYPE

| PART NO. | STAMP | INDUCTANCE [WITHIN] ※1 | D.C.R. (mΩ) [MAX.] (at 20°C) | THE SATURATION CURRENT (A) ※2 | | TEMPERATURE RISE CURRENT (A) ※3 ΔT=40°C |
|--------------------|-------|---------------------------|------------------------------------|----------------------------------|-----------|--|
| | | | | (at 20°C) | (at100°C) | |
| CDEP1Ø4NP-ØR2NC-5Ø | 0R2NS | 0.22μH±30% | 2.2(1.8) | 39.6 | 31.6 | 18.0 |
| CDEP1Ø4NP-ØR4MC-5Ø | 0R4MS | 0.45μH±20% | 3.7(3.1) | 27.6 | 22.1 | 13.4 |
| CDEP1Ø4NP-ØR8MC-5Ø | 0R8MS | 0.8μH±20% | 5.9(4.9) | 20.7 | 16.6 | 10.2 |
| CDEP1Ø4NP-1R3MC-5Ø | 1R3MS | 1.3μH±20% | 11.8(9.8) | 16.6 | 13.3 | 7.3 |
| CDEP1Ø4NP-1R8MC-5Ø | 1R8MS | 1.8μH±20% | 18.6(15.5) | 13.3 | 10.7 | 5.4 |
| CDEP1Ø4NP-2R5MC-5Ø | 2R5MS | 2.5μH±20% | 21.8(18.2) | 11.8 | 9.5 | 5.0 |

※1. Inductance measuring condition: at 100kHz.

※2. Saturation current: The value of D.C. current when the inductance decreases to 65% (while the tolerance is ±30%) or 75% (while the tolerance is ±20%) of it's nominal.

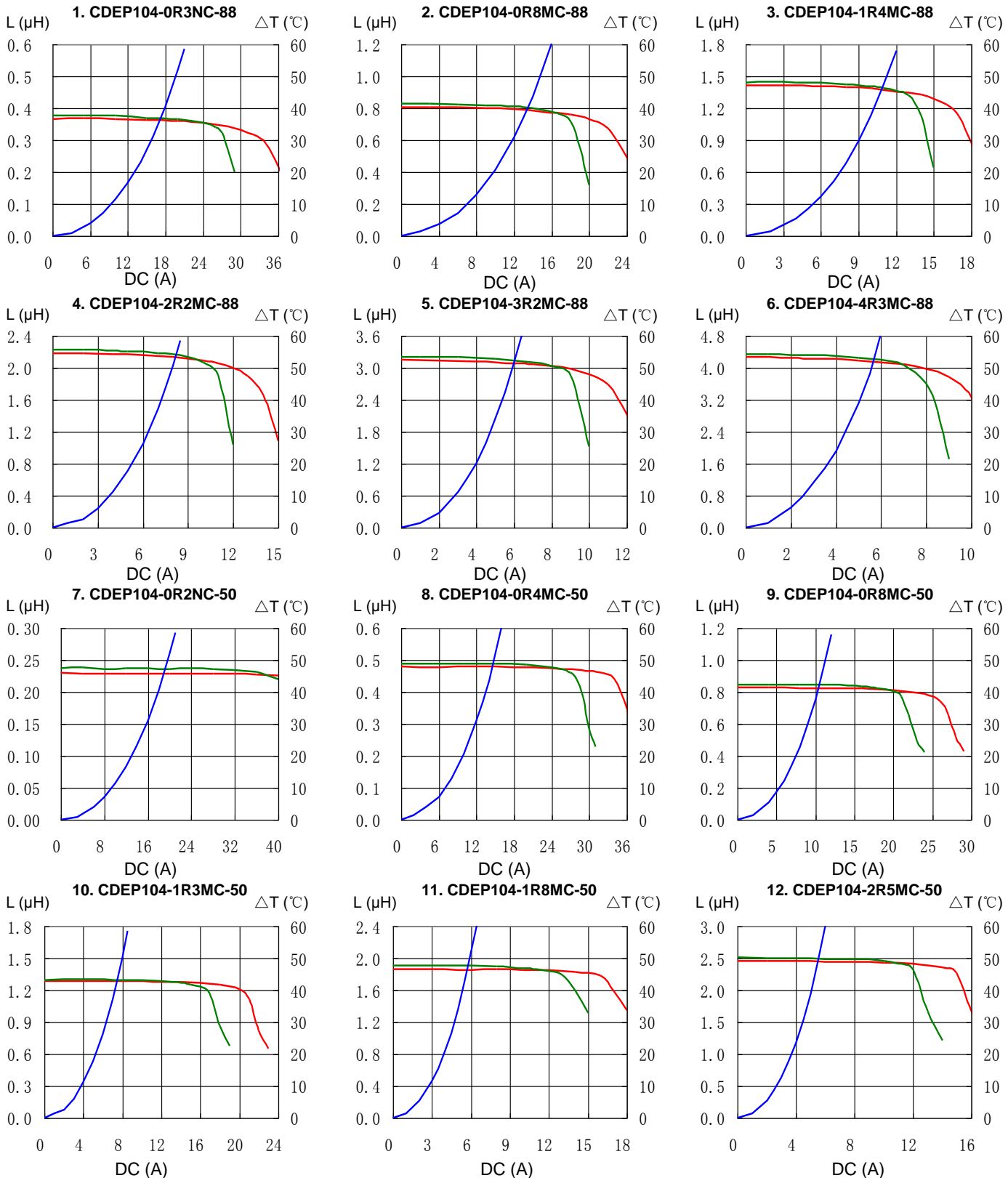
※3. Temperature rise current: The value of D.C. current when the temperature rise is Δt=40°C (Ta=20°C).

SMD Power Inductor CDEP104



Saturation Current & Temperature Rise Graph

— L (20°C) — L (100°C) — ΔT

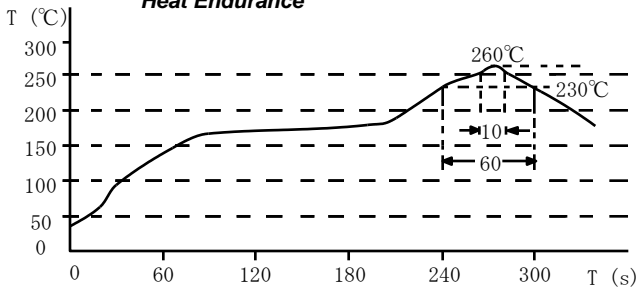


SMD Power Inductor CDEP104

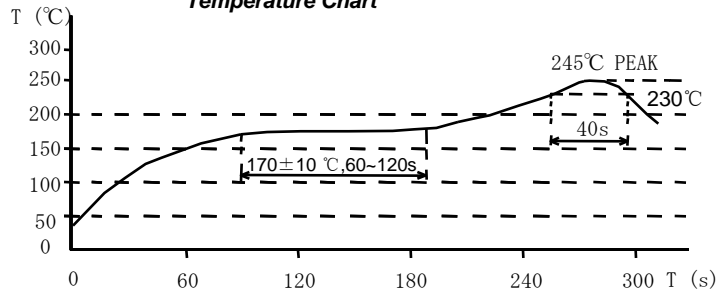


Solder Reflow Condition

Heat Endurance



Temperature Chart



Please refer to the sales offices on our website - <http://www.sumida.com>

Hong Kong

Tel.+852-2880-6781
FAX.+852-2565-9600
sales@hk.sumida.com

Saitama(Japan)

Tel.+81-48-691-7300
FAX.+81-48-691-7340
sales@jp.sumida.com

Chicago

Tel.+1-847-545-6700
FAX. +1-847-545-6720
sales@us.sumida.com

Shanghai

Tel.+86-21-5836-3299
FAX.+86-21-5836-3266
shanghai.sales@cn.sumida.com

Seoul

Tel.+82-2-6237-0777
FAX.+82-2-6237-0778
sales@kr.sumida.com

Obernzell

Tel.+49-8591-937-0
FAX. +49-8591-937-103
contact@eu.sumida.com

Shenzhen

Tel.+86-755-8291-0228
FAX.+86-755-8291-0338
shenzhen.sales@cn.sumida.com

Singapore

Tel.+65-6296-3388
FAX.+65-6841-4426
sales@sg.sumida.com

Neumarkt

Tel.+49-9181-4509-110
FAX. +49-9181-4509-310
infocomp@eu.sumida.com

Taipei

Tel.+886-2-8751-2737
FAX.+886-2-8751-2738
sales@tw.sumida.com

San Jose

Tel.+1-408-321-9660
FAX.+1-408-321-9308
sales@us.sumida.com

单击下面可查看定价，库存，交付和生命周期等信息

[>>Sumida Corporation\(胜美达\)](#)