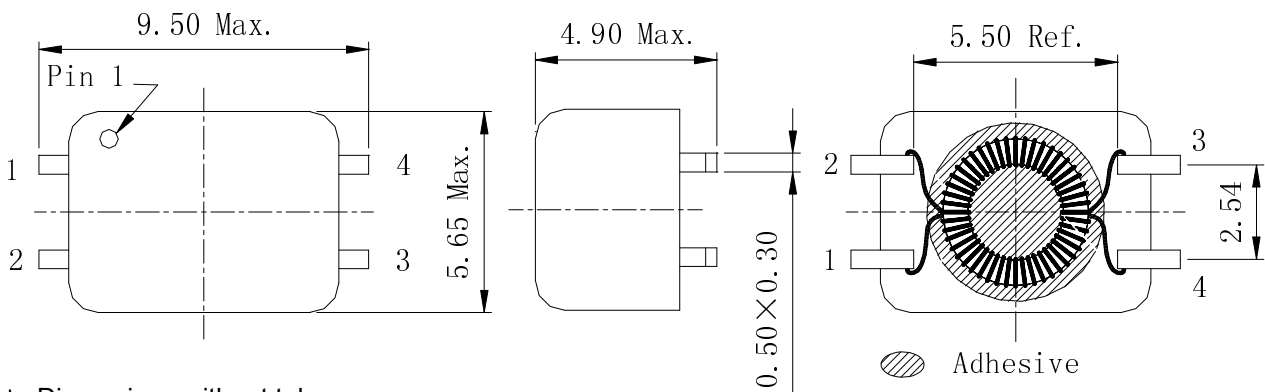


Type: CPFC54
◆ Product Description

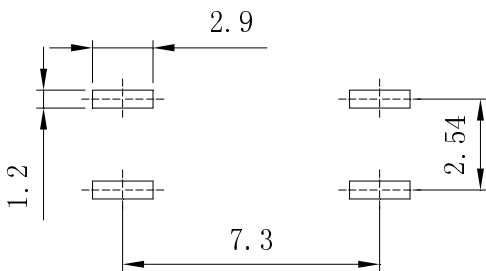
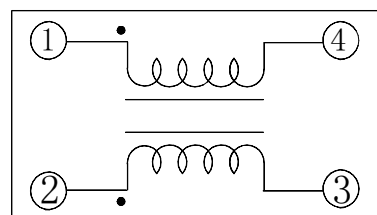
- 9.5 × 5.65mm Max.(L × W), 4.90mm Max. Height .

◆ Feature

- Ideally used in xDSL, Modem and telecom applications.
- RoHS Compliance.


◆ Dimensions (mm)


- * Dimensions without tolerance are approx.
- * Dimension does not include solder used on coil.
- * Pin pitch shall be measured at the root of terminal.

◆ Land Pattern (mm)

◆ Schematics (Bottom)


Type: CPFC54
◆ Specification

| Part Name | Stamp | Inductance (μH) (1-4) or (2-3) ※1 | L _S (nH)Typ. 1-4(2+3 short) ※2 | I _R (mA)1-2 (3+4short) ※3 | D.C.R(m Ω) Typ. (1-4) or (2-3) (at 20°C) | Hipot (V) (1, 4-2, 3) DC 2s 0.5mA |
|-------------|-------|-----------------------------------------|-------------------------------------------------|--------------------------------------------|---------------------------------------------------|--------------------------------------------|
| CPFC54-050C | 050C | 5 ± 30% | 50 | 900 | 100 | 250 |
| CPFC54-110C | 110C | 11 ± 30% | 50 | 700 | 120 | 250 |
| CPFC54-250C | 250C | 25 ± 30% | 150 | 700 | 130 | 250 |
| CPFC54-250S | 250S | 25 ± 30% | 1500 | 700 | 130 | 250 |
| CPFC54-510C | 510C | 51 ± 30% | 200 | 600 | 160 | 250 |
| CPFC54-510S | 510S | 51 ± 30% | 2000 | 600 | 160 | 250 |
| CPFC54-101C | 101C | 100 ± 30% | 200 | 500 | 230 | 250 |
| CPFC54-471C | 471C | 470 ± 30% | 200 | 500 | 200 | 750 |
| CPFC54-102C | 102C | ^{+50%} 1000-30% | 250 | 500 | 200 | 750 |
| CPFC54-222C | 222C | ^{+50%} 2200-30% | 250 | 400 | 400 | 750 |
| CPFC54-472C | 472C | ^{+50%} 4700-30% | 300 | 200 | 650 | 750 |

※1、※2 Measuring condition 100kHz, 0.1V

※3 . I_R:DC current when temperature of coil increased up to 40°C.(Ta=20°C)

单击下面可查看定价，库存，交付和生命周期等信息

[>>Sumida Corporation\(胜美达\)](#)