

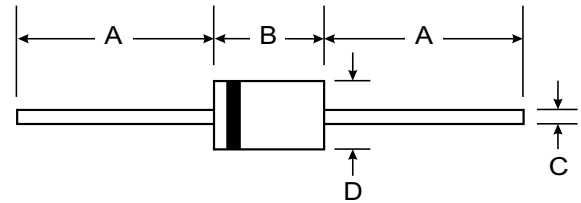
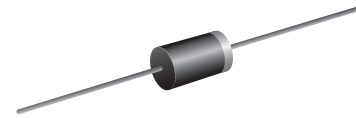
VOLTAGE RANGE: 50 - 1000V
CURRENT: 2.0 A

Features

- Diffused Junction
- High Current Capability and Low Forward Voltage Drop
- Plastic Material - UL Flammability Classification 94V-0

Mechanical Data

- Case: DO - 15
- Terminals: Plated Leads Solderable per MIL-STD-202, Method 208
- Polarity: Cathode Band
- Weight: 0.40 grams (approx.)
- Mounting Position: Any
- Marking: Type Number



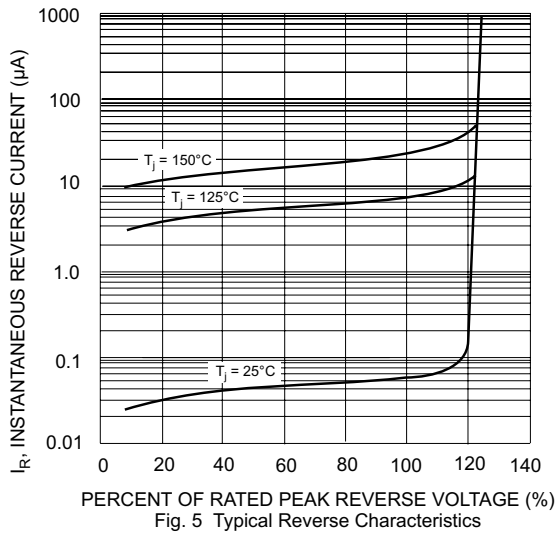
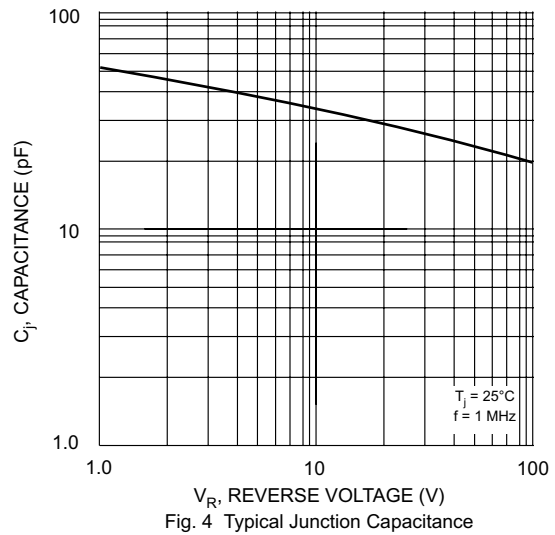
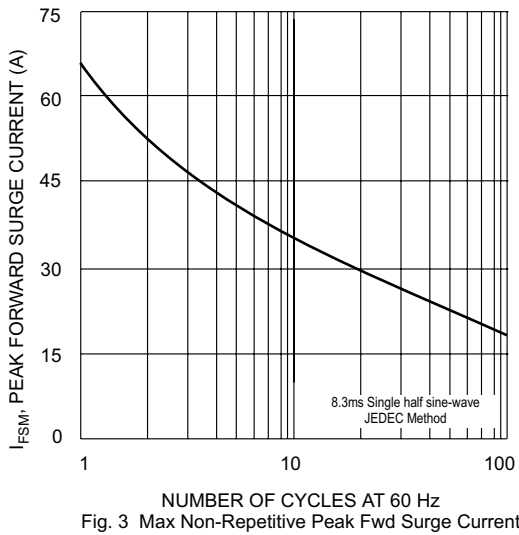
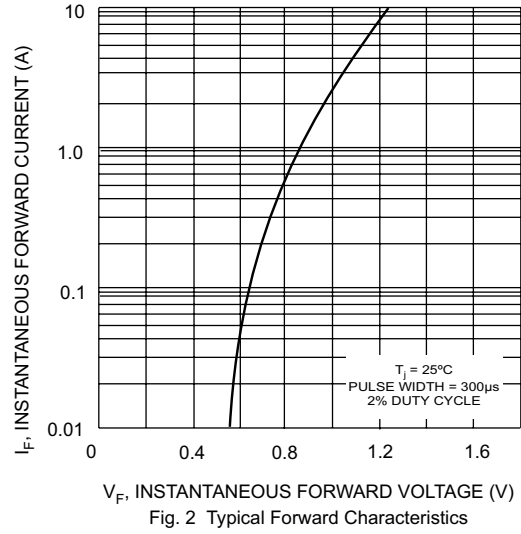
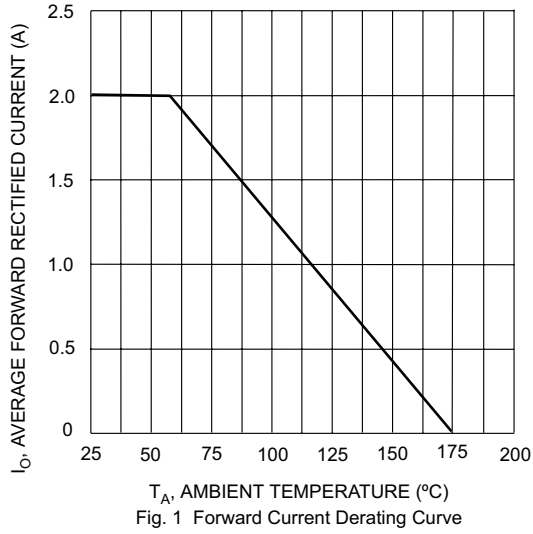
DO-15		
Dim	Min	Max
A	25.40	—
B	5.50	7.62
C	0.686	0.889
D	2.60	3.60
All Dimensions in mm		

Maximum Ratings and Electrical Characteristics T_A = 25°C unless otherwise specified

Single phase, half wave, 60Hz, resistive or inductive load. For capacitive load, derate current by 20%.

Characteristic	Symbol	2A01	2A02	2A03	2A04	2A05	2A06	2A07	Unit
Peak Repetitive Reverse Voltage Working Peak Reverse Voltage DC Blocking Voltage	V_{RRM} V_{RWM} V_R	50	100	200	400	600	800	1000	V
RMS Reverse Voltage	$V_{R(RMS)}$	35	70	140	280	420	560	700	V
Average Rectified Output Current (Note 1) @ T _A = 55°C	I _O	2.0							A
Non-Repetitive Peak Forward Surge Current 8.3ms single half sine-wave superimposed on rated load (JEDEC Method)	I _{FSM}	65							A
Forward Voltage @ I _F = 2.0A	V _{FM}	1.1							V
Peak Reverse Current @ T _A = 25°C at Rated DC Blocking Voltage @ T _A = 100°C	I _{RM}	5.0 200							μA
I ² t Rating For Fusing	I ² t	17.5							A ² s
Typical Junction Capacitance (Note 2)	C _j	40							pF
Typical Thermal Resistance Junction to Ambient	R _{θJA}	60							K/W
Operating and Storage Temperature Range	T _j , T _{STG}	-65 to +175							°C

- Notes: 1. Leads maintained at ambient temperature at a distance of 9.5mm from the case.
 2. Measured at 1.0 MHz and applied reverse voltage of 4.0V DC.



单击下面可查看定价，库存，交付和生命周期等信息

[>>SUNMATE\(森美特\)](#)