

VOLTAGE RANGE: 20 - 200V

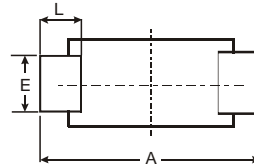
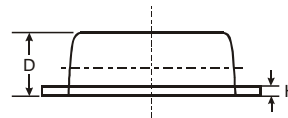
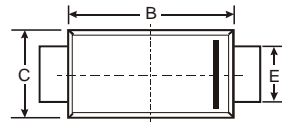
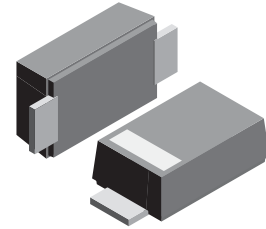
CURRENT: 1.0 A

Features

- The plastic package carries Underwriters Laboratory Flammability Classification 94V-0
- Metal silicon junction, majority carrier conduction
- Low power loss, high efficiency
- High forward surge current capability
- High temperature soldering guaranteed:
250°C/10 seconds, 0.375(9.5mm) lead length,
5 lbs. (2.3kg) tension

Mechanical Data

- Case: SOD-123FL
plastic body over passivated junction
- Terminals : Plated axial leads,
- solderable per MIL-STD-750, Method 2026
- Polarity : Color band denotes cathode end
- Mounting Position : Any
- Weight: 0.0007 ounce, 0.02 grams



SOD-123FL			
Dim	Min	Max	Typ
A	3.58	3.72	3.65
B	2.72	2.78	2.75
C	1.77	1.83	1.80
D	1.02	1.08	1.05
E	0.097	1.03	1.00
H	0.13	0.17	0.15
L	0.53	0.57	0.55
All Dimensions in mm			



Maximum Ratings and Electrical Characteristics T_A = 25°C unless otherwise specified

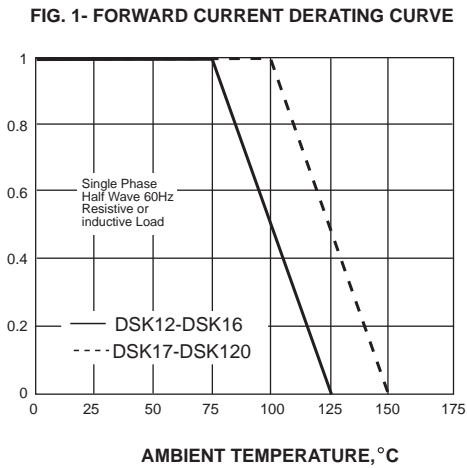
Single phase, half wave, 60Hz, resistive or inductive load. For capacitive load, derate current by 20%.

Characteristic	Symbol	DSK12	DSK13	DSK14	DSK15	DSK16	DSK17	DSK18	DSK19	DSK110	DSK115	DSK120	Unit
	Marking	K12	K13	K14	K15	K16	K17	K18	K19	K110	K115	K120	
Maximum repetitive peak reverse voltage	V _{RRM}	20	30	40	50	60	70	80	90	100	150	200	V
Maximum RMS voltage	V _{RMS}	14	21	28	35	42	49	56	63	70	105	140	V
Maximum DC blocking voltage	V _{DC}	20	30	40	50	60	70	80	90	100	150	200	V
Maximum average forward rectified current	I _(AV)	1.0											A
Peak forward surge current 8.3ms single half sine-wave superimposed on rated load (JEDEC Method)	I _{FSM}	25.0											A
Maximum instantaneous forward voltage at 1.0A	V _F	0.55			0.70			0.85			0.95		V
Maximum DC reverse current at rated DC blocking voltage	I _R	0.5					0.2					mA	
<small>T_A=25°C</small> <small>T_A=100°C</small>		10.0				5.0				2.0			
Typical junction capacitance (NOTE 1)	C _J	110					80					pF	
Operating junction temperature range	T _J	-65 to +125					-65 to +150					°C	
Storage temperature range	T _{STG}	-65 to +150											°C

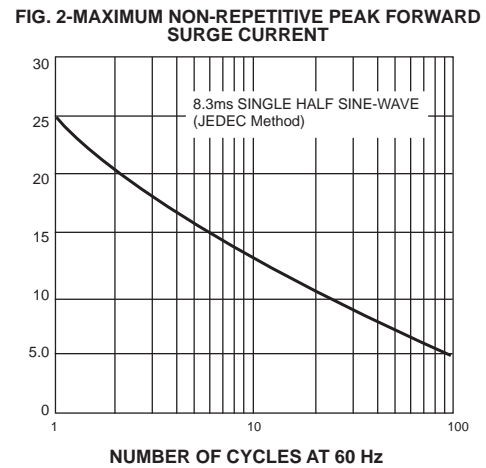
Note: 1. Measured at 1MHz and applied reverse voltage of 4.0V D.C.

RATINGS AND CHARACTERISTIC CURVES DSK12 THRU DSK120

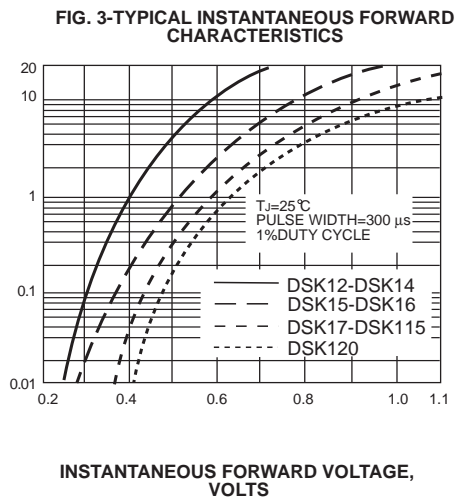
AVERAGE FORWARD RECTIFIED CURRENT, AMPERES



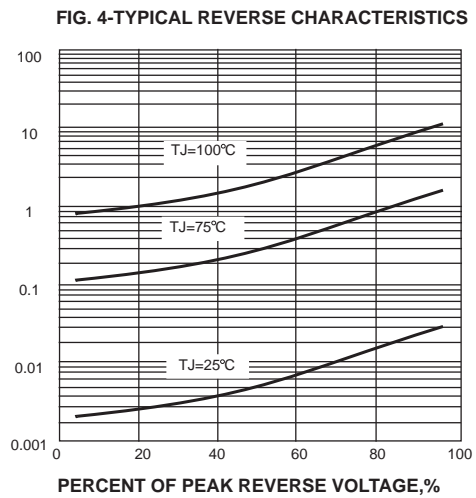
PEAK FORWARD SURGE CURRENT, AMPERES



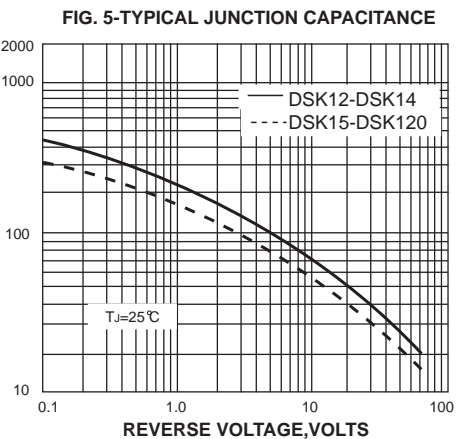
INSTANTANEOUS FORWARD CURRENT, AMPERES



INSTANTANEOUS REVERSE CURRENT, MILLIAMPERES



JUNCTION CAPACITANCE, pF



单击下面可查看定价，库存，交付和生命周期等信息

[>>SUNMATE\(森美特\)](#)