

**VOLTAGE RANGE: 20 - 100V**

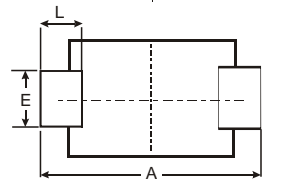
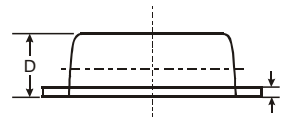
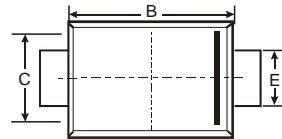
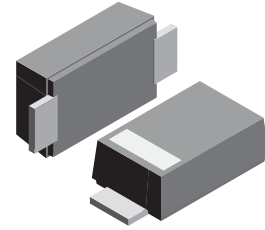
**CURRENT: 3.0 A**

### Features

- For Surface Mounted Applications
- High Temperature Metallurgically Bonded Contacts
- Plastic Material - UL Flammability Classification 94V-0
- High Reliability
- High Current Capability and Low VF

### Mechanical Data

- Case:SMBF , Molded Plastic
- Terminals: Solder Plated, Solderable per MIL-STD-750, Method 2026
- Polarity: Cathode Band or Cathode Notch
- Marking: Type Number
- Weight: 0.0018 ounces,0.05grams



SMBF			
Dim	Min	Max	Typ
A	5.45	5.55	5.50
B	4.27	4.33	4.30
C	3.57	3.63	3.60
D	1.32	1.38	1.35
E	1.96	2.00	1.98
H	0.019	0.021	0.20
L	0.73	0.77	0.75
All Dimensions in mm			

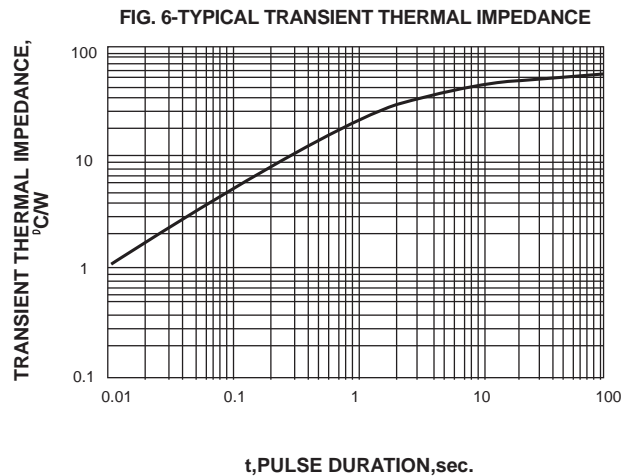
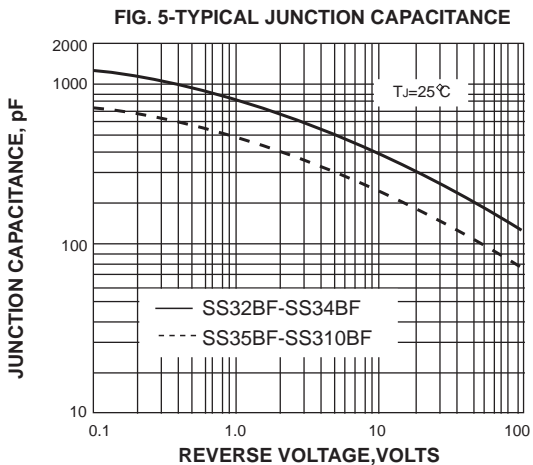
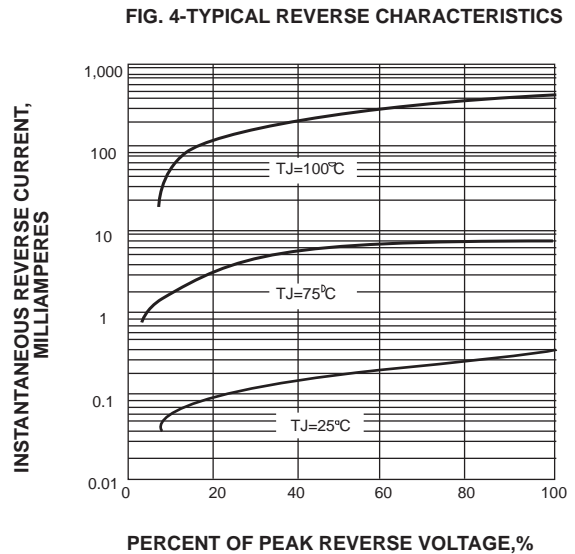
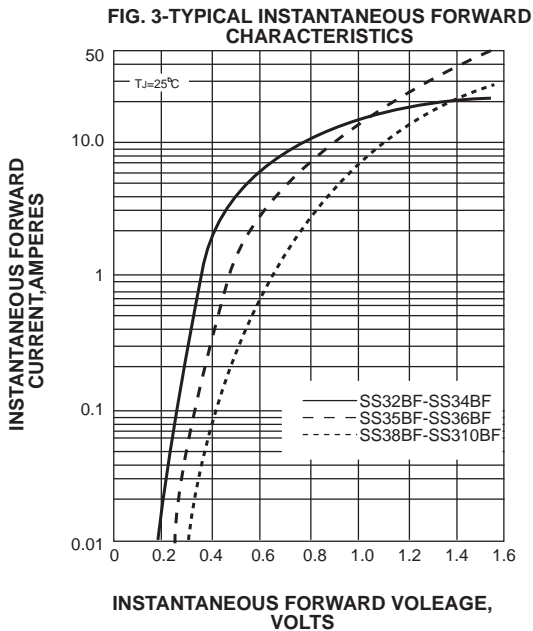
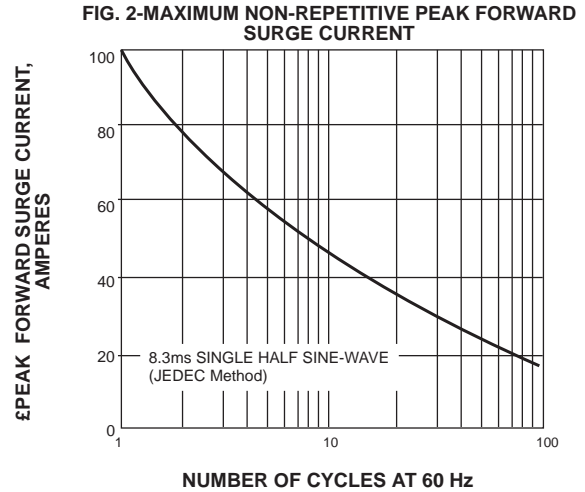
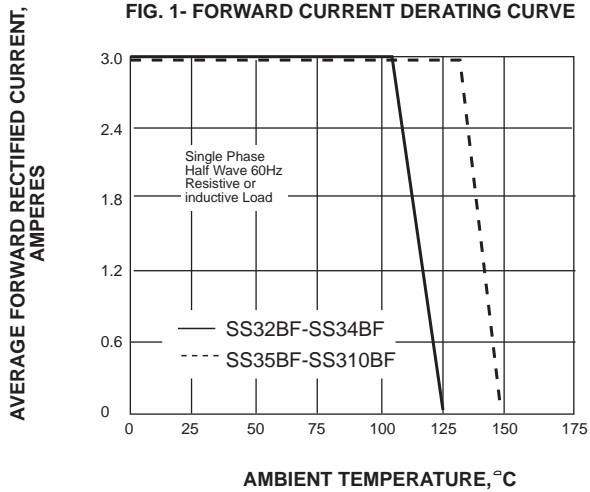
### Maximum Ratings and Electrical Characteristics T<sub>A</sub> = 25°C unless otherwise specified

Single phase, half wave, 60Hz, resistive or inductive load. For capacitive load, derate current by 20%.

Characteristic	Symbol	SS32BF	SS33BF	SS34BF	SS35BF	SS36BF	SS38BF	SS310BF	Unit
Maximum repetitive peak reverse voltage	V <sub>RRM</sub>	20	30	40	50	60	80	100	V
Maximum RMS voltage	V <sub>RMS</sub>	14	21	28	35	42	56	70	V
Maximum DC blocking voltage	V <sub>DC</sub>	20	30	40	50	60	80	100	V
Maximum average forward rectified current at T <sub>L</sub> (see fig.1)	I <sub>(AV)</sub>	3.0							A
Peak forward surge current 8.3ms single half sine-wave superimposed on rated load (JEDEC Method)	I <sub>FSM</sub>	100.0							A
Maximum instantaneous forward voltage at 3.0A	V <sub>F</sub>	0.55		0.70		0.85		V	
Maximum DC reverse current at rated DC blocking voltage <small>T<sub>A</sub>=25°C</small> <small>T<sub>A</sub>=100°C</small>	I <sub>R</sub>	20			10			mA	
Typical junction capacitance (NOTE 1)	C <sub>J</sub>	500			300			pF	
Typical thermal resistance (NOTE 2)	R <sub>θJA</sub>	55.0							°C/W
Operating junction temperature range	T <sub>J</sub>	-65 to +125			-65 to +150			°C	
Storage temperature range	T <sub>STG</sub>	-65 to +150							°C

**Note:**1.Measured at 1MHz and applied reverse voltage of 4.0V D.C.  
2.P.C.B. mounted with 0.2x0.2"(5.0x5.0mm) copper pad areas

## RATINGS AND CHARACTERISTIC CURVES SS32BF THRU SS310BF



单击下面可查看定价，库存，交付和生命周期等信息

[>>SUNMATE\(森美特\)](#)