

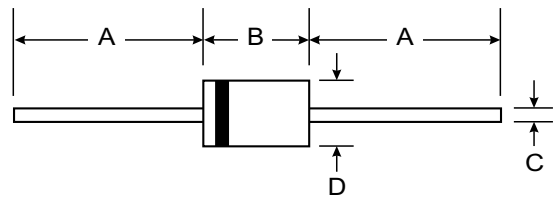
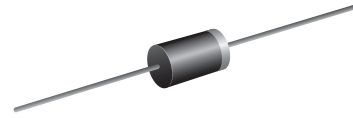
**VOLTAGE RANGE: 300 - 400V**  
**CURRENT: 1.5 A**

### Features

- Low leakage
- Low forward voltage drop
- High current capability
- Easily cleaned with alcohol, Isopropanol and similar solvents

### Mechanical Data

- Case: DO-201AD, molded plastic
- Terminals: Axial lead, solderable per MIL-STD202, method 208
- Polarity: Color band denotes cathode
- Weight: 0.041 ounces, 1.15 grams
- Mounting position: Any



DO-201AD		
Dim	Min	Max
A	25.40	—
B	7.20	9.50
C	1.20	1.30
D	4.80	5.30
All Dimensions in mm		

### Maximum Ratings and Electrical Characteristics T<sub>A</sub> = 25°C unless otherwise specified

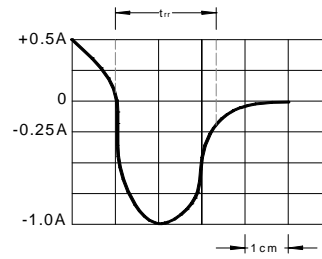
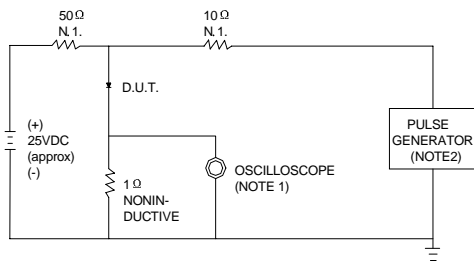
Single phase, half wave, 60Hz, resistive or inductive load. For capacitive load, derate current by 20%.

Characteristic	Symbol	31DF3	31DF4	UNITS
Maximum recurrent peak reverse voltage	$V_{RRM}$	300	400	V
Maximum RMS voltage	$V_{RMS}$	210	280	V
Maximum DC blocking voltage	$V_{DC}$	300	400	V
Maximum average forward rectified current 9.5mm lead length, @T <sub>A</sub> =75°C	$I_{F(AV)}$	1.5		A
Peak forward surge current 8.3ms single half-sine-wave superimposed on rated load @T <sub>J</sub> =125°C	$I_{FSM}$	125.0		A
Maximum instantaneous forward voltage @ I <sub>F</sub> =3A	$V_F$	1.25		V
Maximum reverse current @T <sub>A</sub> =25°C at rated DC blocking voltage @T <sub>A</sub> =100°C	$I_R$	5.0	50.0	μA
Maximum reverse recovery time (Note1)	$t_{rr}$	30		ns
Typical junction capacitance (Note2)	$C_J$	90		pF
Typical thermal resistance (Note3)	$R_{\theta JA}$	34		°C/W
Operating junction temperature range	$T_J$	- 55 ----- + 150		°C
Storage temperature range	$T_{STG}$	- 55 ----- + 150		°C

NOTE: 1. Measured with I<sub>F</sub>=0.5A, I<sub>R</sub>=1A, I<sub>rr</sub>=0.25A.

2. Measured at 1.0MHz and applied reverse voltage of 4.0V DC.

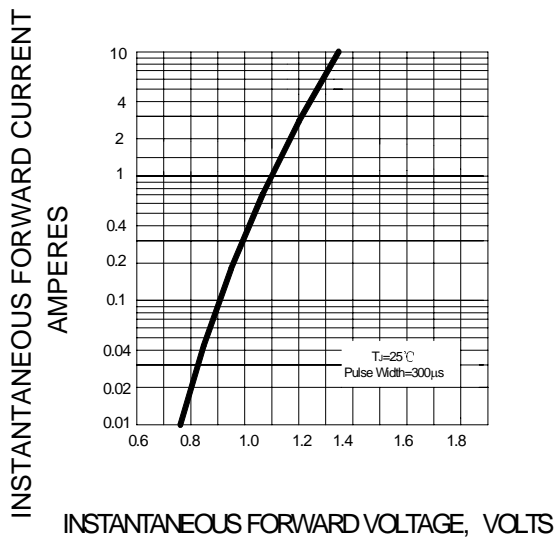
**FIG.1 – TEST CIRCUIT DIAGRAM AND REVERSE RECOVERY TIME CHARACTERISTIC**



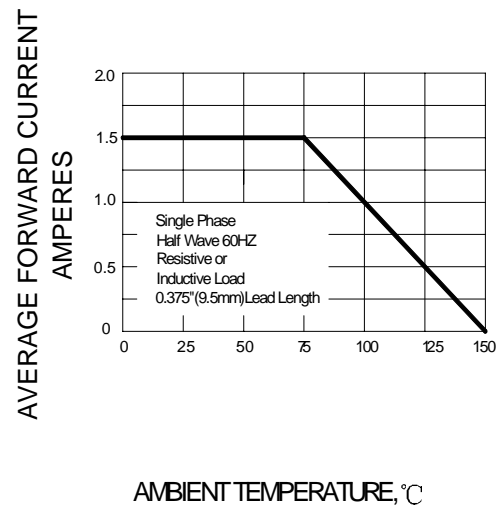
SET TIME BASE FOR 10 ns/cm

NOTES:1. RISE TIME = 7ns MAX INPUT IMPEDANCE = 1MΩ, 22pF.  
2. RISE TIME = 10ns MAX SOURCE IMPEDANCE = 50 Ω.

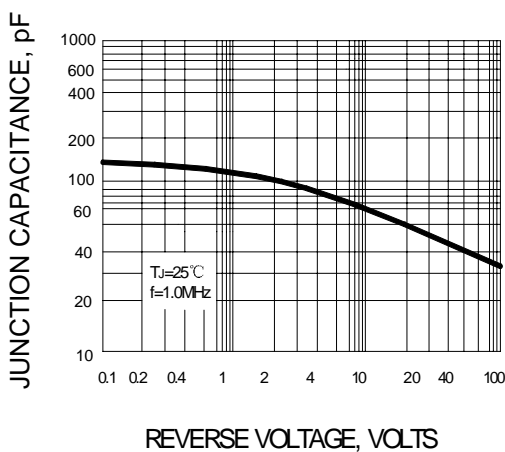
**FIG.2 – TYPICAL FORWARD CHARACTERISTIC**



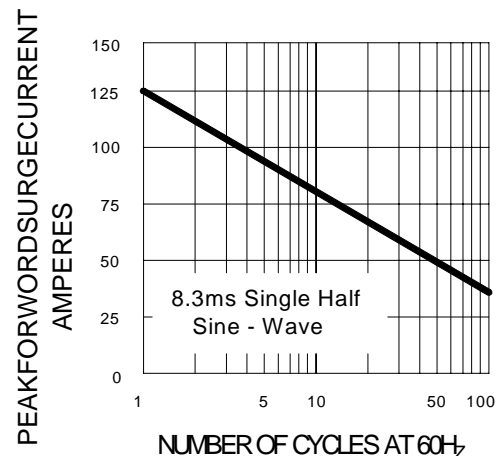
**FIG.3 – FORWARD DERATING CURVE**



**FIG.4- TYPICAL JUNCTION CAPACITANCE**



**FIG.5- PEAK FORWARD SURGE CURRENT**



单击下面可查看定价，库存，交付和生命周期等信息

[>>SUNMATE\(森美特\)](#)