

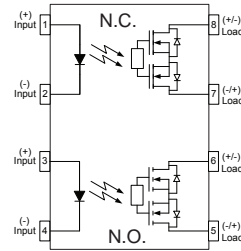


Parameter	Symbol	Rating	Units
Load Voltage	$V_L$	400	V
Load Current	$I_L$	0.12	A
On-Resistance	$R_{on}$	20	$\Omega$
I/O Breakdown Voltage	$V_{io}$	5000	Vrms



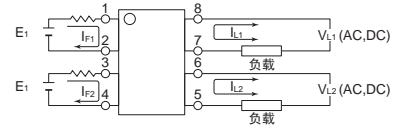
SMD-8

DIP-8

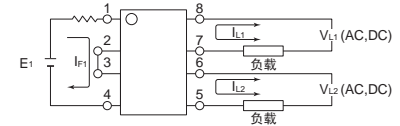


1,3. LED Anode  
2,4. LED Cathode  
5,6. Drain (MOS FET)  
7,8. Drain (MOS FET)

(1) 1a1b 2input



(2) 1a1b 1input



### SUPSiC PhotoRelays

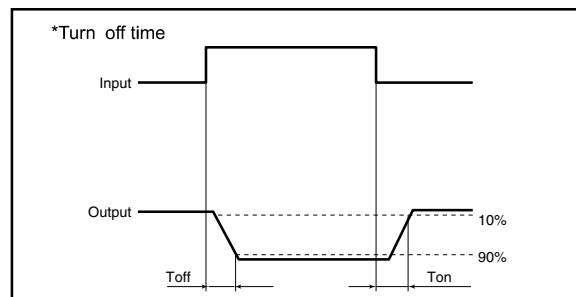
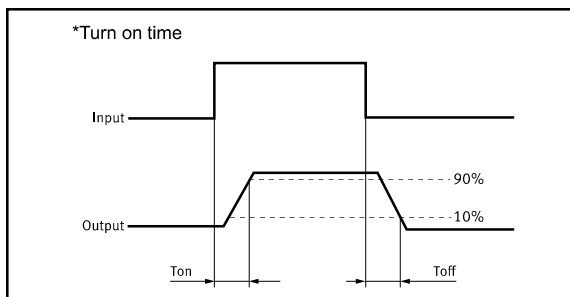
- Long life (No limit on mechanical and electrical lifetime) Bounce-free switching
- Higher speed and high frequency switching
- Higher sensitivity (less power consumption)
- Immunity to EMI or RFI
- No have voltaic arc, bounce, and noise More
- resistant to vibration and impact AC or DC load
- switching
- Small package size

### Applications

- Telecom/Datacom switching
- Multiplexers
- Meter reading systems
- Data acquisition
- Medical equipment
- Battery monitoring
- I/O Sub-Systems
- Robotics
- Aerospace
- Home/Safety security systems
- Process Control
- Energy Management
- Reed Relay EMR Replacement
- Programmable Controllers

### TPYES

Category	Output Rating		Package	Part No.	Packing Quantity
	Load Voltage	Load Current			
AC/DC	400V	120mA	DIP-8	GAQW614E	50pcs /tube
			SMD-8	GAQW614EH	1000pcs /reel



## Absolute Maximum Ratings (Ta = 25°C)

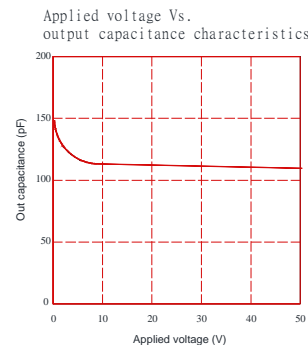
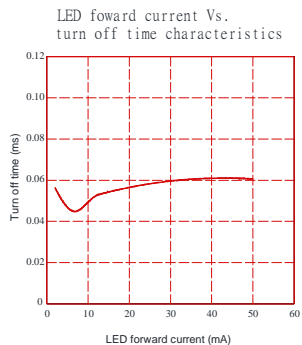
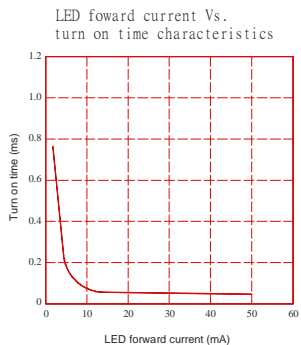
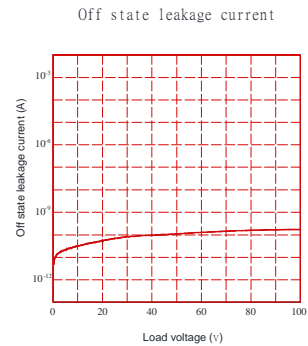
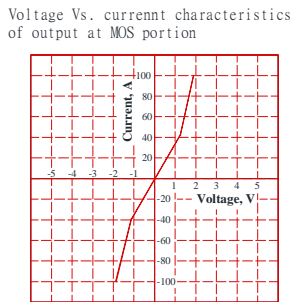
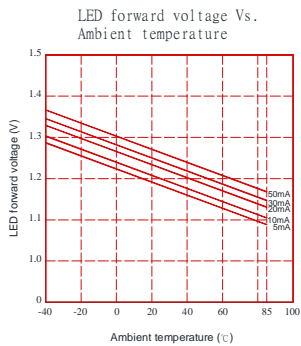
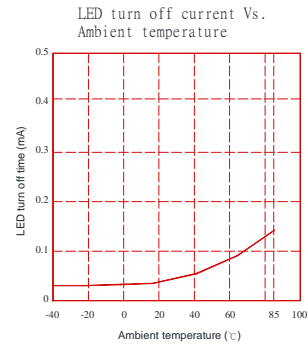
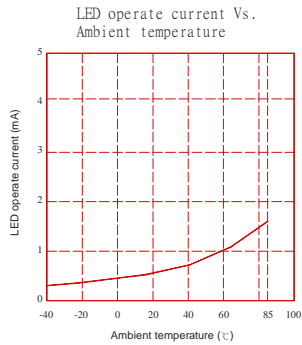
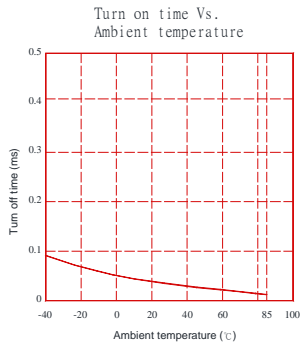
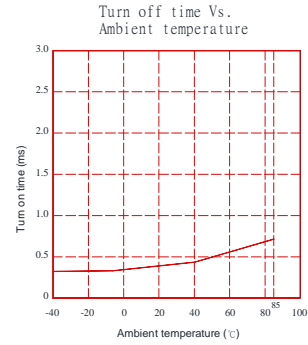
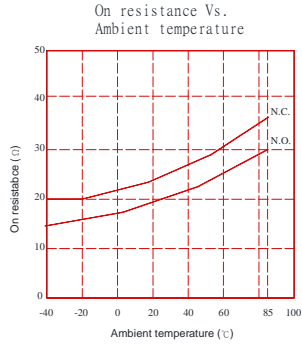
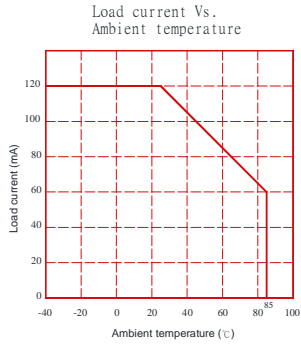
Item		Symbol	Value	Units	Note
Input	Continuous LED Current	IF	50	mA	
	Peak LED Current	IFP	1000	mA	f=100Hz, duty=1%
	LED Reverse Voltage	VR	5	V	
	Input Power Dissipation	Pin	75	mW	
Output	Load Voltage	VL	400	V(AC peak or DC)	
	Load Current	IL	120	mA	
	Peak Load Current	IPeak	0.6	A	1ms(1 pulse)
	Output Power Dissipation	Pout	450	mW	
Total Power Dissipation		PT	500	mW	
I/O Breakdown Voltage		VI/O	5000	Vrms	RH=60%, 1min
Operating Temperature		TOpr	-40 to +85	-40 to +85	
Storage Temperature		TStg	-40 to +100	-40 to +100	
Pin Soldering Temperature		TSol	260	260	10 sec max.

## Electrical Characteristics (Ta = 25°C)

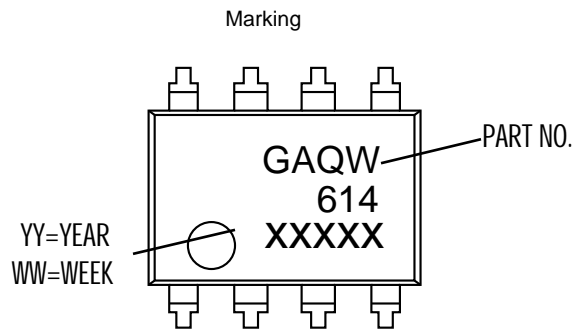
Item		Symbol	MIN.	TYP.	MAX.	Units	Conditions
Input	LED Forward Voltage	V <sub>F</sub>		1.2	1.5	V	I <sub>F</sub> =10mA
	Operation LED Current	I <sub>F on</sub>		0.5	5.0	mA	
	Recovery LED Current	I <sub>F off</sub>		0.35	0.5	mA	
	Recovery LED Voltage	V <sub>F off</sub>	0.5			V	
Output	On-Resistance	R <sub>On</sub>		20(N.O.)	30(N.O.)	Ω	I <sub>F</sub> =5mA (N.O.) I <sub>F</sub> =0mA (N.C) I <sub>L</sub> =100mA Time to flow is within 1 sec.
				20(N.C.)	50(N.C.)		
	Off-State Leakage Current	I <sub>Leak</sub>			1(N.O.) 10(N.C.)	uA	I <sub>F</sub> =0mA (N.O.) I <sub>F</sub> =5mA (N.C) V <sub>L</sub> = Rating
Output Capacitance	C <sub>Out</sub>		150		pF	I <sub>F</sub> =5mA, V <sub>L</sub> =0, f=1MHz	
Transmission	Turn-On Time	T <sub>On</sub>		0.23 (N.O.)	0.5 (N.O.)	ms	I <sub>F</sub> =5mA, I <sub>L</sub> =Max
				0.2 (N.C.)	1.0 (N.C.)		
	Turn-Off Time	T <sub>Off</sub>		0.03 (N.O.)	0.2 (N.O.)	ms	
				0.5 (N.C.)	3.0 (N.C.)		
Coupled	I/O Isolation Resistance	R <sub>I/O</sub>	10 <sup>10</sup>			Ω	DC500V
	I/O Capacitance	C <sub>I/O</sub>		0.8		pF	f=1MHz

Please obey the following conditions to ensure proper device operation and resetting. Input LED current (Recommended value): IF ≥5mA and ≤30mA

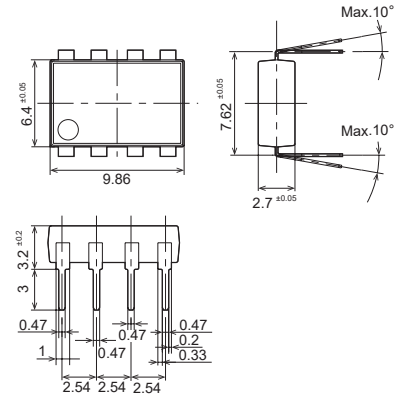
## Engineering Data



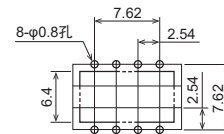
## Dimensions and DIP-8 Package Unit: mm



### Through hole terminal type

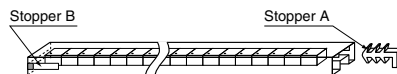


### PC board pattern (Bottom view)

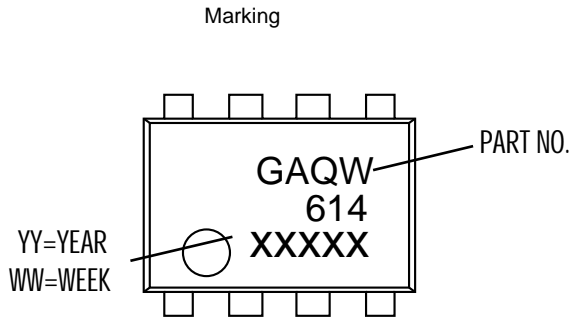


## DIP Tape dimensions Unit: mm

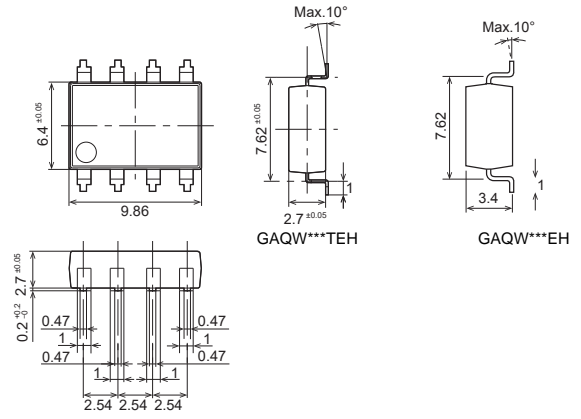
Devices are packaged in a tube so that pin No. 1 is on the stopper B side. Observe correct orientation when mounting them on PC boards.



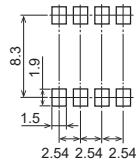
## Dimensions and SMD-8 Package Unit: mm



### Surface mount terminal type

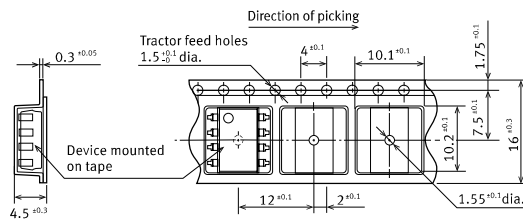


### Recommended mounting pad (Top view)

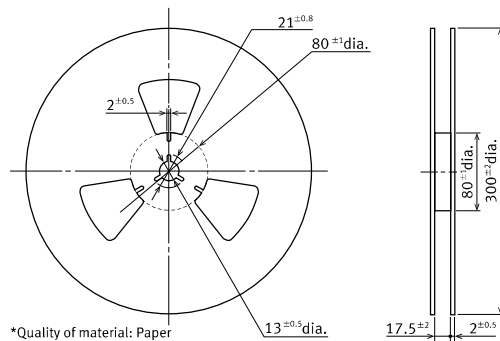


## Tape dimensions ( tape reel )

### Tape dimensions (Unit: mm)

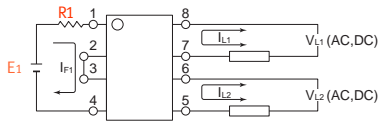


### Dimensions of paper tape reel (Unit: mm)



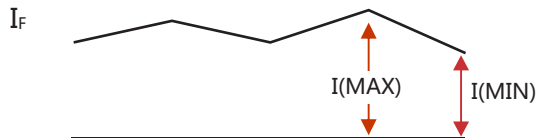
## Using Methods

Examples of resistance value to control LED forward current ( $I_F=5\text{mA}$ )



E1	R1 (Approx)
3.3V	300 $\Omega$
5.0V	600 $\Omega$
12V	1.9K $\Omega$
24V	4.1K $\Omega$

LED forward current must be more than 5mA , at  $I(\text{MIN})$  , and less than 30mA , at  $I(\text{MAX})$ .



## Recommended Operating Conditions

Please obey the following conditions to ensure proper device operation and resetting. Input LED current (Recommended value):

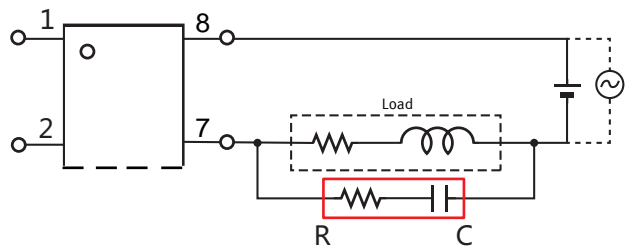
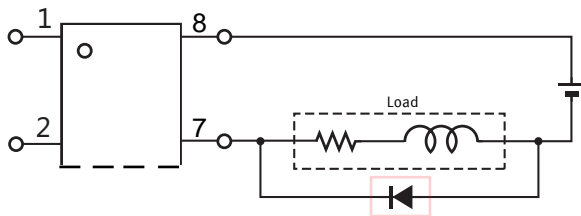
Characteristic	Symbol	Min	Typ.	Max	Unit
Forward current	$I_F$	5.0	7.0	30	mA

## Protection Circuit

Output spike voltages:if an inductive load generates spike voltages which exceed heabsolute maximum rating, the spike voltage shall be limited.

Clamp diode is connected in parallel with the load.  
Absorb capacity with external diode.

CR Snubber is connected in parallel with the load.  
Absorb capacity with buffer capacity.



When adding diodes, buffer circuits (C-R), and other protections, they need to be installed near the MOS RELAY to be effective. Adding protection elements may result in a slow reset time, so adjust them according to the actual situation before use.

Note: When developing designs using this product, perform the expected performance of the equipment under the operating conditions recommended by the guidelines in this document. Continuous use under heavy loads (including, but not limited to, the application of high temperatures/current/voltage and significant changes in temperature, etc.) may result in deterioration of the reliability of this product.

单击下面可查看定价，库存，交付和生命周期等信息

[>>SUPSiC\(国晶微\)](#)