

Ferrite Bead

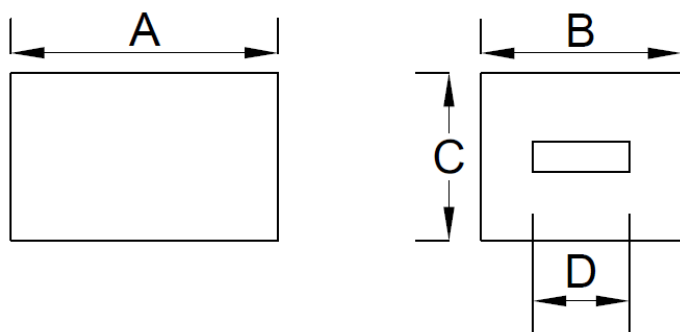
BPH853025R5V-101T

1. Features

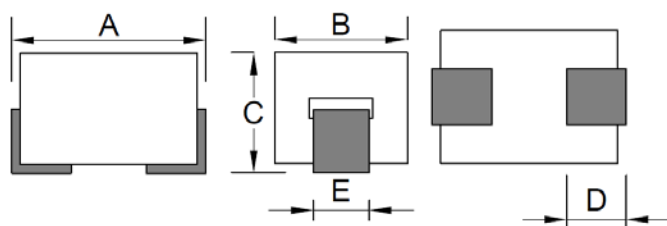
- 100% Lead(Pb) & Halogen-Free and RoHS compliant.
- High reliability -Reliability tests comply with AEC-Q200
- Operating temperature -40~+125°C (Including self - temperature rise)



2. Dimension

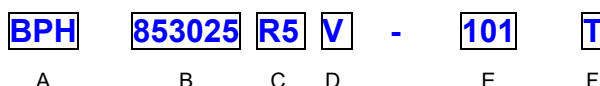


CORE SIZE			
A(mm)	B(mm)	C(mm)	D(mm)
8.5 ±0.25	3.0 ±0.15	2.5 ±0.15	1.5 ±0.15



PRODUCT SIZE				
A(mm)	B(mm)	C(mm)	D(mm)	E(mm)
9.0 ±0.40	3.0 ±0.15	2.8 ±0.25	1.50±0.50	1.25±0.20

3. Part Numbering



- A: Series
- B: Dimension
- C: Material
Ferrite Core
- D: Category Code
V=Vehicle
- E: Impedance
101=100Ω
- F: Packaging
T=Taping and Reel

4. Specification

TAI-TECH Part Number	ELECTRICAL REQUIREMENTS 1			ELECTRICAL REQUIREMENTS 2			DCR (mΩ) Max.	Rated Current(A)	
	Impedance (Ω)	Tolerance (%)	Test Frequency (MHz)	Impedance (Ω)	Tolerance (%)	Test Frequency (MHz)		ΔT=40°C TYP.	ΔT=60°C TYP.
BPH853025R5V-101T	65	±25	25	100	±25	100	1.00	30(1) 13(2)	40(1) 18(2)

Note:

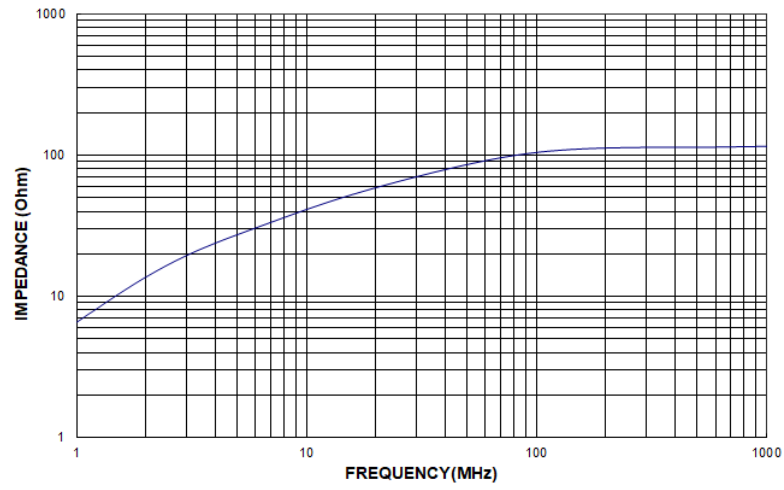
Rated Current :

(1) : Chroma high current test fixture.

(2) :PCB test fixture (30x45mm copper pattern , 50um copper thickness).

www.tai-tech.com.tw

Typical Impedance v.s. Frequency Curve



单击下面可查看定价，库存，交付和生命周期等信息

[>>TAI-TECH\(台庆\)](#)