

Ferrite Bead

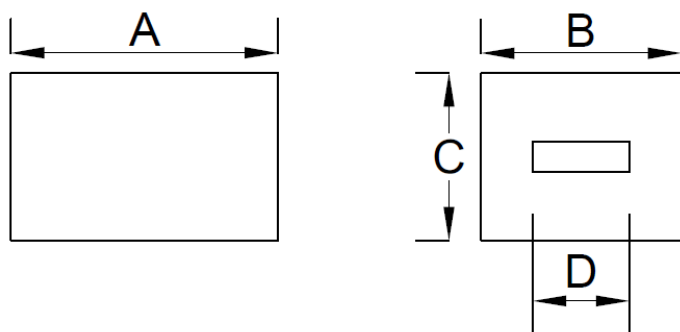
BPH403025R5V-530T

1. Features

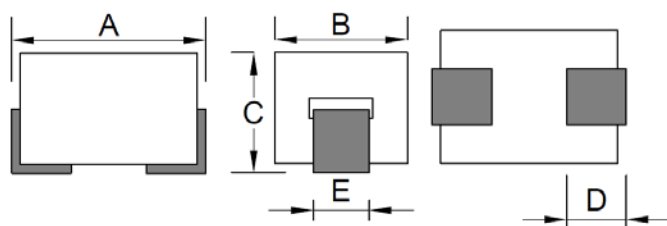
- 100% Lead(Pb) & Halogen-Free and RoHS compliant.
- High reliability -Reliability tests comply with AEC-Q200
- Operating temperature-40~+125°C (Including self - temperature rise)



2. Dimension

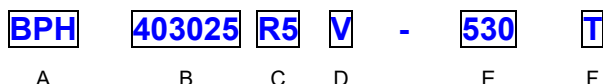


CORE SIZE			
A(mm)	B(mm)	C(mm)	D(mm)
4.00 ±0.25	3.10 ±0.15	2.50 ±0.15	1.50 ±0.15



PRODUCT SIZE				
A(mm)	B(mm)	C(mm)	D(mm)	E(mm)
4.30~5.10	3.1 ±0.15	2.70~3.1	1.35±0.20	1.35±0.15

3. Part Numbering



- A: Series
- B: Dimension
- C: Material
Ferrite Core
- D: Category Code
V=Vehicle
- E: Impedance
530=53Ω
- F: Packaging
T=Taping and Reel

4. Specification

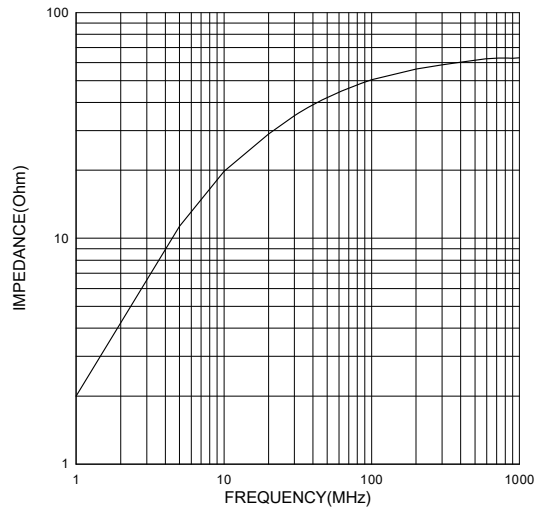
TAI-TECH Part Number	ELECTRICAL REQUIREMENTS 1			ELECTRICAL REQUIREMENTS 2			DCR (mΩ) Max.	Rated Current(A)	
	Impedance (Ω)	Tolerance (%)	Test Frequency (MHz)	Impedance (Ω)	Tolerance (%)	Test Frequency (MHz)		ΔT=40°C TYP.	ΔT=60°C TYP.
BPH403025R5V-530T	35	±25	25	53	±25	100	0.60	35.0(1) 15.0(2)	45.0(1) 18.0(2)

Note:

Rated Current :

- (1) : Chroma high current test fixture.
- (2) :PCB test fixture (30x45mm copper pattern , 50um copper thickness).

Typical Impedance v.s. Frequency Curve



单击下面可查看定价，库存，交付和生命周期等信息

[>>TAI-TECH\(台庆\)](#)