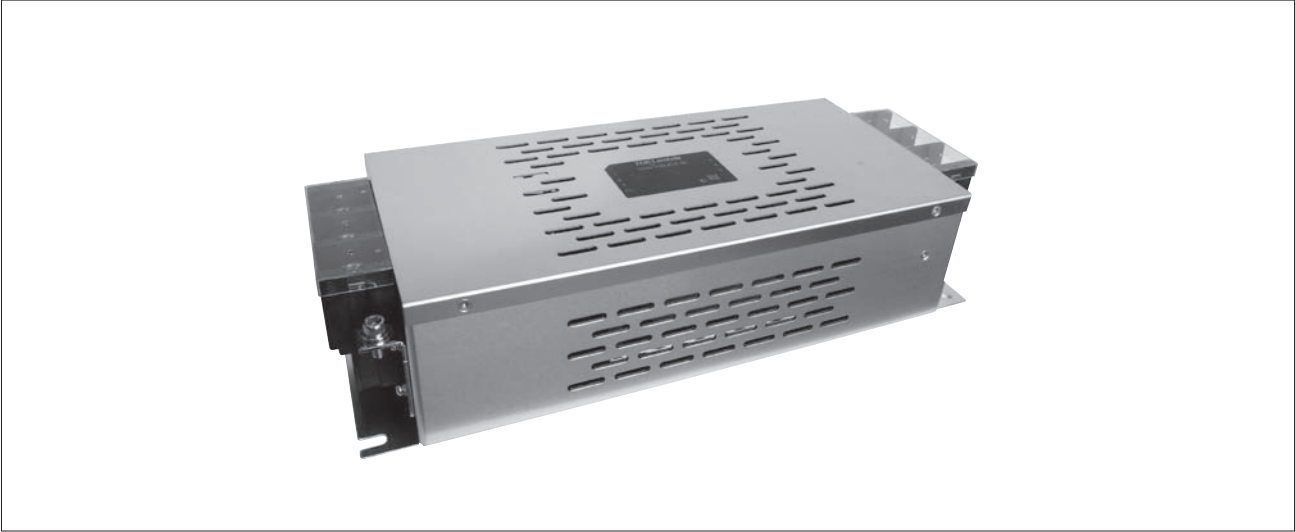


RTEN-J9J3-00 SERIES

Three-Phase Filter Of Block Terminal and Low Profile



EMC
filter

FEATURES

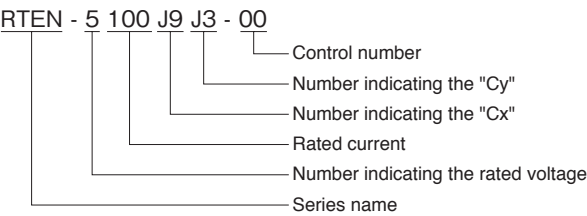
- High specification model of RTEN-5 series
- Attenuation characteristics is improved by coils and capacitors
- 100 to 300A are lined up
- Suitable for EMI prevention for the equipment exporting to Europe (Approved by EN60939)

SAFETY STANDARDS

EN60939-1/-2 (ENEC14)

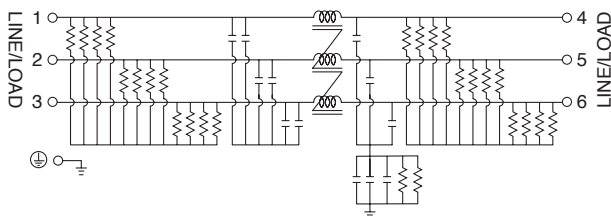
RTEN-
J9J3

PRODUCT IDENTIFICATION



CONFORMITY TO RoHS Directive

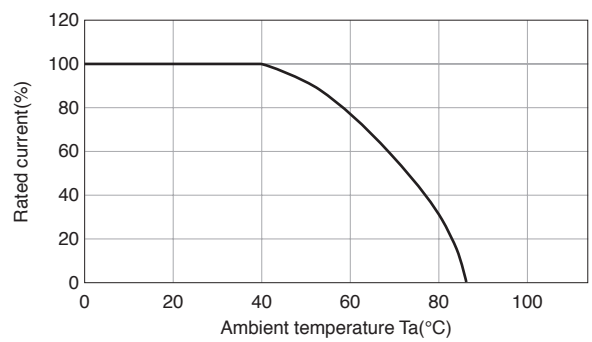
CIRCUIT DIAGRAM



ELECTRICAL CHARACTERISTICS

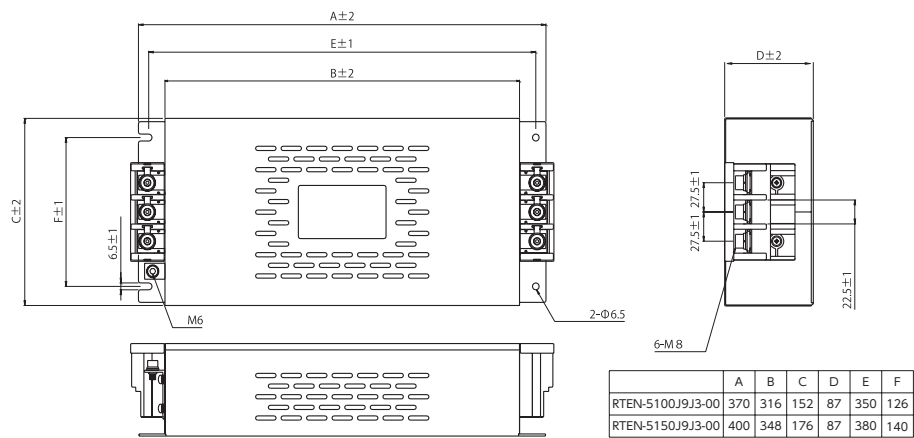
Part No.	Rated voltage (AC/DC)	Rated current (AC/DC)	Withstand voltage	Leakage current	Operating temperature range	With derating over	Attenuation frequency range (MHz)				Weight
							Common mode		Differential mode		
							at 40dB	at 30dB	at 40dB	at 30dB	(kg)
RTEN-5100J9J3-00	500V	100A	DC.2150V	168mA max. [500V/50Hz]	-25 to +85℃	+40℃	0.2 to 6	-	0.2 to 6	-	4.2
RTEN-5150J9J3-00		150A					0.2 to 6	-	0.2 to 6	-	7.1
RTEN-5200J9J3-00		200A	60s [line - earth]				-	0.2 to 6	-	0.2 to 6	10.7
RTEN-5250J9J3-00		250A					-	0.2 to 6	-	0.2 to 6	10.7
RTEN-5300J9J3-00		300A					-	0.2 to 3	-	0.2 to 3	10.7

DERATING GRAPH

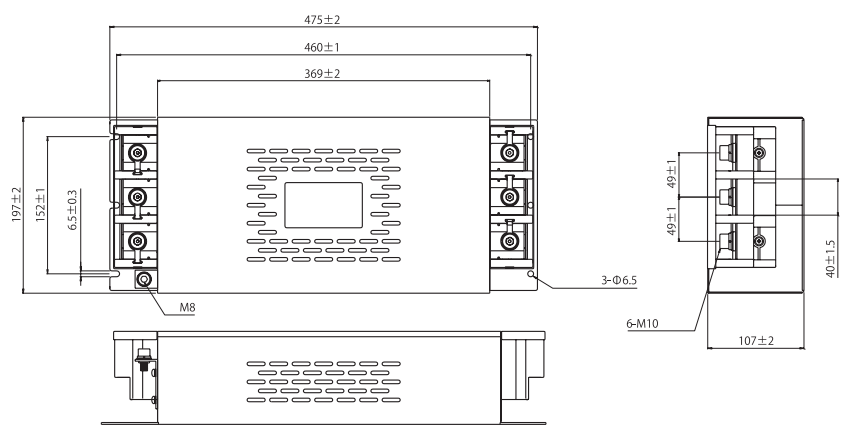


MECHANICAL

RTEN-5100J9J3-00 / RTEN-5150J9J3-00



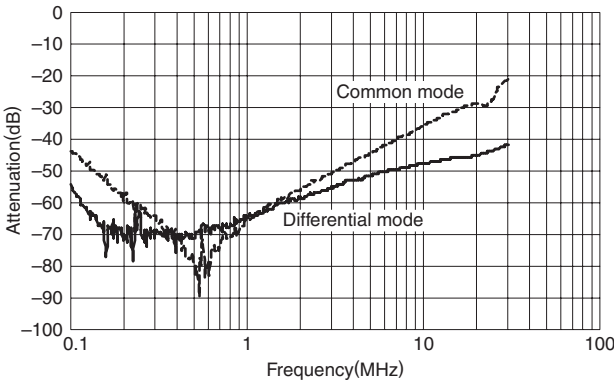
RTEN-5200J9J3-00 / RTEN-5250J9J3-00 / RTEN-5300J9J3-00



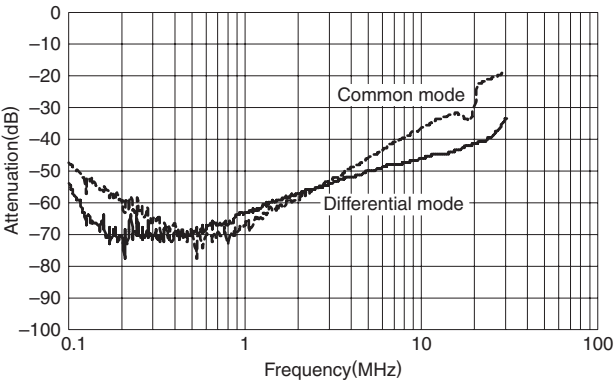
Dimensions in mm

ATTENUATION vs. FREQUENCY CHARACTERISTICS

RTEN-5100J9J3-00

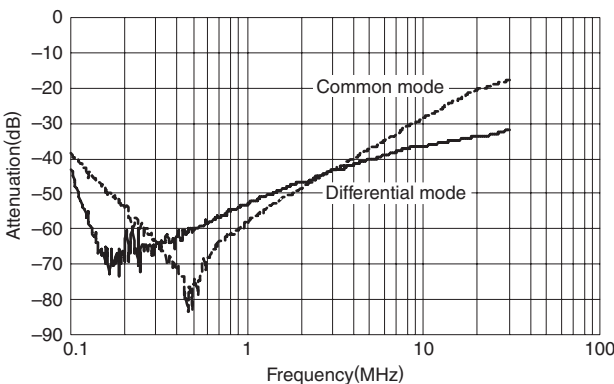


RTEN-5150J9J3-00

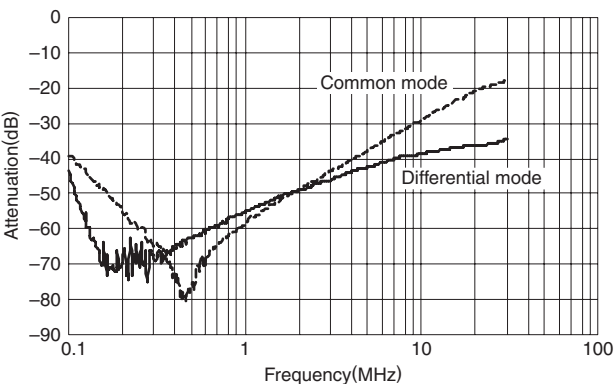


EMC
フィルタ

RTEN-5200J9J3-00

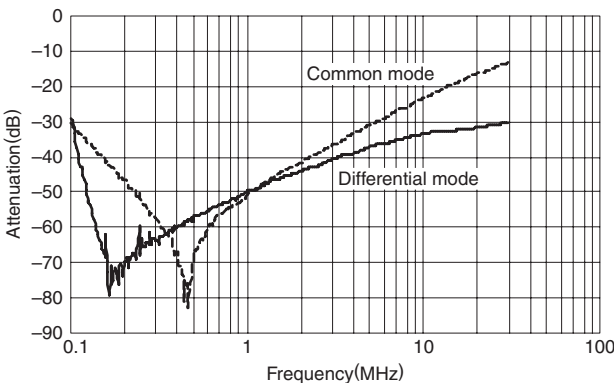


RTEN-5250J9J3-00



RTEN-
J9J3

RTEN-5300J9J3-00



单击下面可查看定价，库存，交付和生命周期等信息

[>>TDK-Lambda](#)