

# EMC Filters for AC Power Line

Conformity to RoHS Directive

## For Triple-phase, Large-size Box Cased ZRWT-ME Series

### FEATURES

- Two-stage construction, utilizing both common mode and differential mode chokes to greatly improve attenuation characteristics. Highly compact and light weight.
- Great attenuation of both differential mode and common mode noise within the CISPR frequency range.
- Provides self-recovery protection and high reliability due to use of capacitors between lines and ground.
- Withstands AC.2000V between lines and ground.
- Block terminal board simplifies wiring by making possible single-direction wiring of EMC filter terminal lines. Cover attached to the terminal board assures safety.
- It is a product conforming to RoHS directive.

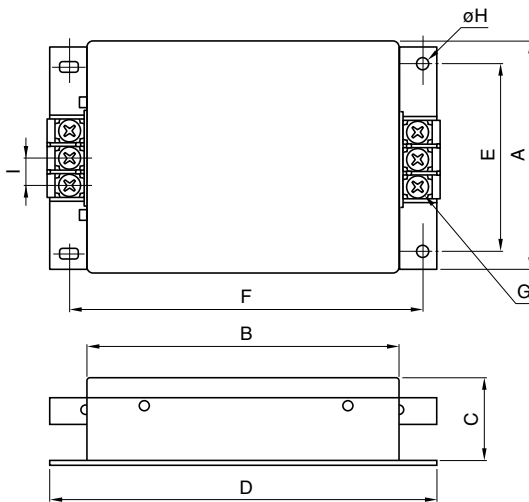
### SAFETY STANDARDS

Part No.	Standard and standard No.
	Europe
	Ⓝ NEMKO
	EN60939
ZRWT2205-ME	P08209038
ZRWT2210-ME	P08209038
ZRWT2220-ME	P08209038
ZRWT2230-ME	P08209038

### APPLICATIONS

Computers, general control equipment, numerical control equipment, general-purpose inverter power sources, and other industrial equipment applications.

### SHAPES AND DIMENSIONS



Dimensions in mm

Part No.	A	B	C	D	E	F	G	øH	I
ZRWT2205-ME	85	120	40	160	68	140	M4	4.2	16
ZRWT2210-ME	90	150	40	190	68	170	M4	5.2	16
ZRWT2220-ME	100	170	50	210	78	190	M4	5.2	16
ZRWT2230-ME	125	170	60	210	101	190	M6	5.2	27.5

• Case:metal, block terminal: phillips head screw terminals, terminal cover:polyvinyl chloride terminal cover plate.

### ELECTRICAL CHARACTERISTICS

Part No.	ZRWT2205-ME	ZRWT2210-ME	ZRWT2220-ME	ZRWT2230-ME
Rated voltage Eac(V)	250	250	250	250
Rated current(A)	5	10	20	30
Test voltage Eac (V) [Between terminal and case]	2000	2000	2000	2000
Insulation resistance (MΩ)[DC.500V,1min / between terminal and case]	100min.	100min.	100min.	100min.
Leakage current (mA)[250V • 60Hz]	1max.	1max.	1max.	1max.
DC resistance (mΩ)	160max.	80max.	25max.	15max.
Operating temperature range (°C) [Including self-temperature rise]	-25 to +85	-25 to +85	-25 to +85	-25 to +85
With derating over(°C)	55	55	55	55
Temperature rise (°C)	35max.	35max.	35max.	35max.
Attenuation frequency range (MHz)[+5 to +35°C]	Differential mode at 40dB Common mode at 20dB			
	0.2 to 30	0.2 to 30	0.3 to 30	0.3 to 30
	0.2 to 30	0.2 to 30	0.3 to 30	0.5 to 30
Weight (kg)	0.8	1	1.6	2.3

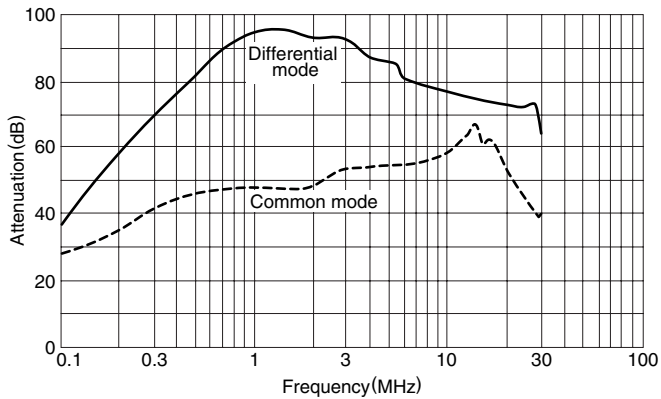
• Conformity to RoHS Directive: This means that, in conformity with EU Directive 2002/95/EC, lead, cadmium, mercury, hexavalent chromium, and specific bromine-based flame retardants, PBB and PBDE, have not been used, except for exempted applications.

• All specifications are subject to change without notice.

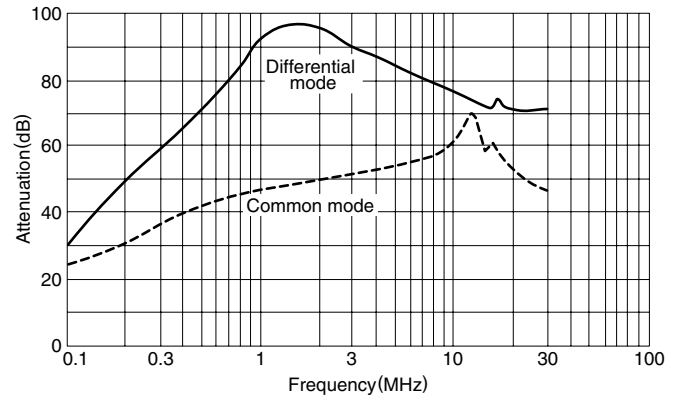
## TYPICAL ELECTRICAL CHARACTERISTICS

### ATTENUATION vs. FREQUENCY CHARACTERISTICS

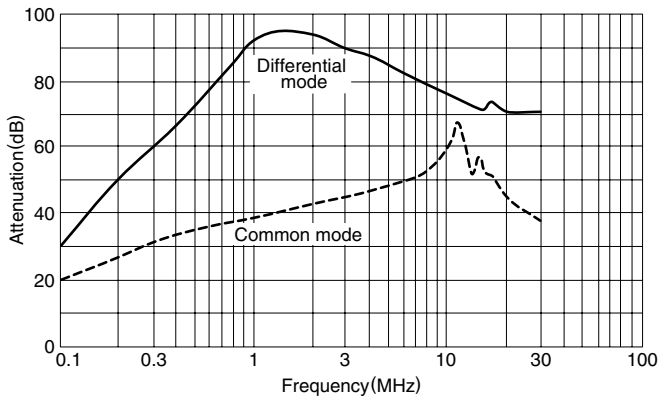
#### ZRWT2205-ME



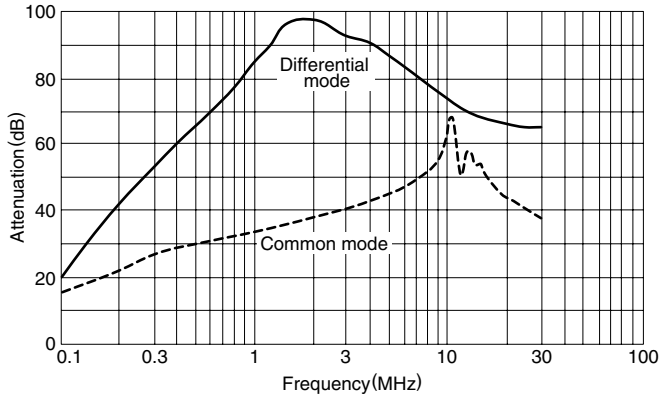
#### ZRWT2210-ME



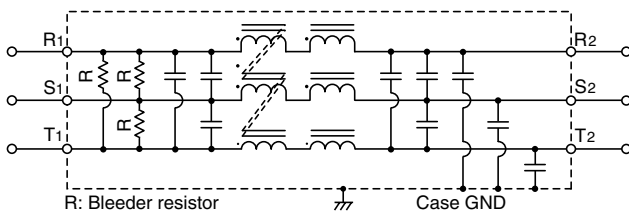
#### ZRWT2220-ME



#### ZRWT2230-ME



### CIRCUIT DIAGRAM



### CAUTIONS

- When there is a danger of a high energy pulse voltage (over 2kV for over 1 $\mu$ s), use a surge absorbing element such as a varistor, or arrester on the EMC filter power supply input side.

单击下面可查看定价，库存，交付和生命周期等信息

[>>TDK-Lambda](#)