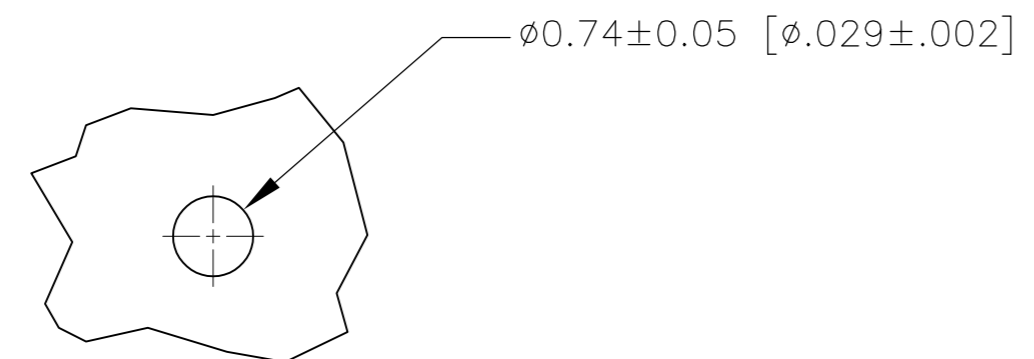
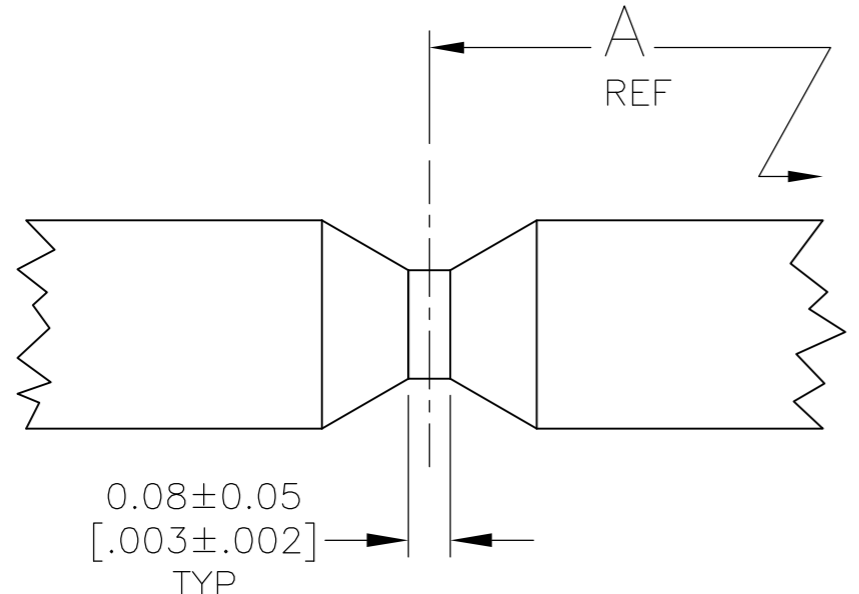
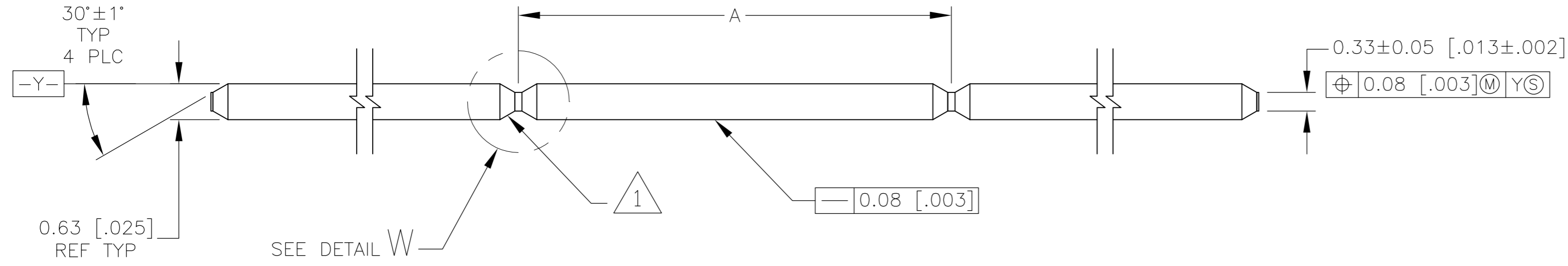


THIS DRAWING IS UNPUBLISHED. RELEASED FOR PUBLICATION  
 BY TYCO ELECTRONICS CORPORATION. ALL RIGHTS RESERVED.

| LOC | DIST | REVISIONS                 |         |     |      |
|-----|------|---------------------------|---------|-----|------|
| P   | LTR  | DESCRIPTION               | DATE    | DWN | APVD |
|     | B    | ECO-07-021031             | 11SEP07 | MB  | JG   |
|     | B1   | REVISED PER ECO-09-020689 | 22AUG09 | KK  | AEG  |



RECOMMENDED PC BOARD  
TIN-PLATED HOLE SIZE

- 1 THE NOTCHED EDGES AND POST TIPS WILL NOT BE PLATED.
- 2 0.00038 [.000015] GOLD OVER 0.00127 [.000050] NICKEL.
- 3 MATERIAL: COPPER ALLOY.
- 4 OBSOLETE PARTS: OBSOLETE CIS STREAMLINING PER D.RENAUD/D.SINISI

| 4 OBSOLETE | Dimension     | Part Number |
|------------|---------------|-------------|
|            | 25.40 [1.000] | 6-147334-1  |
|            | 25.15 [.990]  | 6-147334-0  |
|            | 24.89 [.980]  | 5-147334-9  |
|            | 24.64 [.970]  | 5-147334-8  |
|            | 24.38 [.960]  | 5-147334-7  |
|            | 24.13 [.950]  | 5-147334-6  |
|            | 23.88 [.940]  | 5-147334-5  |
|            | 23.62 [.930]  | 5-147334-4  |
|            | 23.37 [.920]  | 5-147334-3  |
|            | 23.11 [.910]  | 5-147334-2  |
|            | 22.86 [.900]  | 5-147334-1  |
|            | 22.61 [.890]  | 5-147334-0  |
|            | 22.35 [.880]  | 4-147334-9  |
|            | 22.10 [.870]  | 4-147334-8  |
|            | 21.84 [.860]  | 4-147334-7  |
|            | 21.59 [.850]  | 4-147334-6  |
|            | 21.34 [.840]  | 4-147334-5  |
|            | 21.08 [.830]  | 4-147334-4  |
|            | 20.83 [.820]  | 4-147334-3  |
|            | 20.57 [.810]  | 4-147334-2  |
|            | 20.32 [.800]  | 4-147334-1  |
|            | 20.07 [.790]  | 4-147334-0  |
|            | 19.81 [.780]  | 3-147334-9  |
|            | 19.56 [.770]  | 3-147334-8  |
|            | 19.30 [.760]  | 3-147334-7  |
|            | 19.05 [.750]  | 3-147334-6  |
|            | 18.80 [.740]  | 3-147334-5  |
|            | 18.54 [.730]  | 3-147334-4  |
|            | 18.28 [.720]  | 3-147334-3  |
|            | 18.03 [.710]  | 3-147334-2  |
|            | 17.78 [.700]  | 3-147334-1  |
|            | 17.53 [.690]  | 3-147334-0  |
|            | 17.27 [.680]  | 2-147334-9  |
|            | 17.02 [.670]  | 2-147334-8  |
|            | 16.76 [.660]  | 2-147334-7  |
|            | 16.51 [.650]  | 2-147334-6  |
|            | 16.26 [.640]  | 2-147334-5  |
|            | 16.00 [.630]  | 2-147334-4  |
|            | 15.75 [.620]  | 2-147334-3  |
|            | 15.49 [.610]  | 2-147334-2  |
|            | 15.24 [.600]  | 2-147334-1  |
|            | 14.99 [.590]  | 2-147334-0  |
|            | 14.73 [.580]  | 1-147334-9  |
|            | 14.48 [.570]  | 1-147334-8  |
|            | 14.22 [.560]  | 1-147334-7  |
|            | 13.97 [.550]  | 1-147334-6  |
|            | 13.72 [.540]  | 1-147334-5  |
|            | 13.46 [.530]  | 1-147334-4  |
|            | 13.21 [.520]  | 1-147334-3  |
|            | 12.95 [.510]  | 1-147334-2  |
|            | 12.70 [.500]  | 1-147334-1  |
|            | 12.45 [.490]  | 1-147334-0  |
|            | 12.19 [.480]  | 147334-9    |
|            | 11.94 [.470]  | 147334-8    |
|            | 11.68 [.460]  | 147334-7    |
|            | 11.43 [.450]  | 147334-6    |
|            | 11.18 [.440]  | 147334-5    |
|            | 10.92 [.430]  | 147334-4    |
|            | 10.67 [.420]  | 147334-3    |
|            | 10.41 [.410]  | 147334-2    |
|            | 10.16 [.400]  | 147334-1    |

|  |  |   |   |  |
|--|--|---|---|--|
| THIS DRAWING IS A CONTROLLED DOCUMENT. |  | DWN<br>B. HAYMAKER<br>06MAR00           | Tyco Electronics Corporation<br>Harrisburg, PA 17105-3608 |  |
| DIMENSIONS:<br>INCHES                  |  | CHK<br>J. GESFORD<br>06MAR00            | NAME<br>0.64 [.025] SQ CONTINUOUS POST                    |  |
| TOLERANCES UNLESS OTHERWISE SPECIFIED: |  | APVD<br>J. GESFORD<br>06MAR00           | PRODUCT SPEC  |  |
| 0 PLC ± -                              |  | APPLICATION SPEC                        |   |  |
| 1 PLC ± -                              |  | 114-13011                               |   |  |
| 2 PLC ± -                              |  | SIZE CAGE CODE DRAWING NO RESTRICTED TO |   |  |
| 3 PLC ± 0.13[.005]                     |  | A2 00779 C-147334                       |   |  |
| 4 PLC ± -                              |  | WEIGHT                                  |   |  |
| ANGLES ± -                             |  | CUSTOMER DRAWING                        |   |  |
| FINISH                                 |  | SCALE 15:1 SHEET 1 OF 1 REV B1          |   |  |

单击下面可查看定价，库存，交付和生命周期等信息

[>>TE Connectivity\(泰科\)](#)