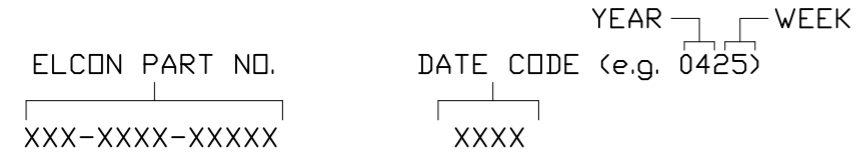


REVISIONS			
EC	REV	DESCRIPTION	DATE
	A2	REVISED PER ECO-11-005140	25MAR11

8. ITEMS PROVIDED TO THIS SPECIFICATION TO BE PERMANENTLY IDENTIFIED PER THE FOLLOWING IDENTIFIER:



7. RECOMMENDED PRESSING FIXTURE: FIX00058 FOR COMPLIANT APPLICATION IS AVAILABLE. PLEASE CONSULT FACTORY.

6. EXAMPLE PCB CONFIGURATION.

5. THIS CONFIGURATION WITH 2-SEGMENT POWER CONNECTOR IS SHOWN FOR REFERENCE ONLY. COMBINATION OF MULTIPLE NUMBERS OF 2 AND 3 SEGMENT MODULES COULD BE USED PER USER PREFERENCE. OVERALL COMBINATION SHOULD NOT EXCEED 8.0" IN LENGTH.

4. SOCKETS ACCEPT 1.6 [.062] ± 10% THICK PC BOARD.

3. FINISHES:

CONTACTS: SELECTIVE GOLD PER MIL-G-45204, .000030" MIN. THK, OVER NICKEL PER QQ-N-290

TERMINALS: SELECTIVE TIN PER ASTM B-545, OVER NICKEL PER QQ-N-290

2. MATERIALS:

INSULATORS: THERMOPLASTIC, GLASS REINFORCED, COLOR-BLACK UL94V-0 FLAMMABILITY RATED.

POWER CONTACTS: COPPER ALLOY

1. PART NUMBER CHANGES AND OR DESIGN CHANGES AFFECTING ITEM INTERCHANGEABILITY REQUIRE PRIOR ELCON APPROVAL AND AUTHORIZATION BY REVISION TO THIS DRAWING.

NOTES: UNLESS OTHERWISE SPECIFIED;

10. OBSOLETE PARTS: OBSOLETE CIS STREAMLINING PER D.RENAUD/D.SINISI

9. PART NUMBER INFORMATION

	CONNECTOR	REFERENCE PART NO	ELCON PART NUMBER	TERMINATION TYPE	PC TAIL LENGTH DIM "A"	RECOMMENDED MOUNTING BOARD	MATING BOARD
10 OBSOLETE	SOCKET	<del>6650534-2</del>	287-0022-12100	SOLDER TAIL (SHORT)	3.56 [.140] 2.54 [.100]	1.6 [.062] THICK	1.6 [.062] THICK
	SOCKET	<del>6650534-3</del>	287-0022-12300	SOLDER TAIL (STANDARD)	5.08 [.200] 4.06 [.160]	3.2 [.125] OR THINNER	1.6 [.062] THICK
	SOCKET	6650534-1	287-0022-11300	COMPLIANT TAIL	5.08 [.200] 4.06 [.160]	2.3 [.093] OR THICKER	1.6 [.062] THICK

<p>THIRD ANGLE PROJECTION</p> <p>UNLESS OTHERWISE SPECIFIED DIMENSIONS ARE IN METRIC [INCHES]</p> <p>TOLERANCES</p> <p>ANGLES ± .5'</p> <p>DECIMALS</p> <p>.XX ± .25 [.010]</p> <p>.X ± .5 [.020]</p>	<p>← MM OR MM [INCH]</p> <p>INCH</p>	DRAWN	DATE	TE Connectivity	
	HA NGUYEN	06/24/04	CHECKED		<p>TITLE</p> <p>SOCKET CONNECTOR, CROWNEDGE</p> <p>PN: 287-0022-12100/287-0022-12300</p> <p>PN: 287-0022-11300</p>
	APPROVED		APPROVED		
	D. CHAU	06/25/04	APPROVED		
M. ALIM	07/21/04	APPROVED			
ACAD FILE NUMBER C6650534A.DWG		DWG NUMBER		<p>SIZE B</p> <p>DWG NUMBER C = 6650534</p>	
DWG SCALE 2=1			SH 1 OF 5		

4

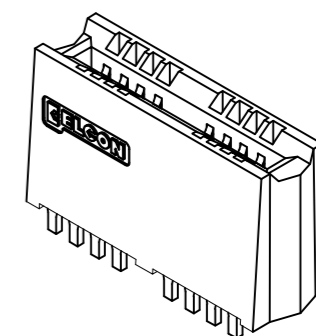
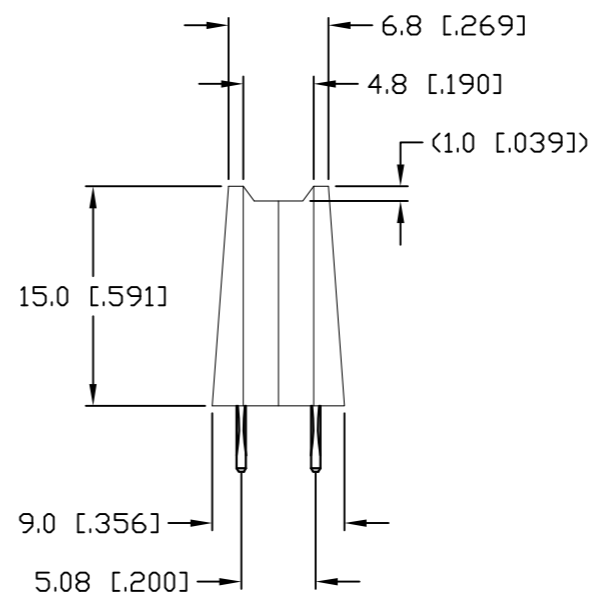
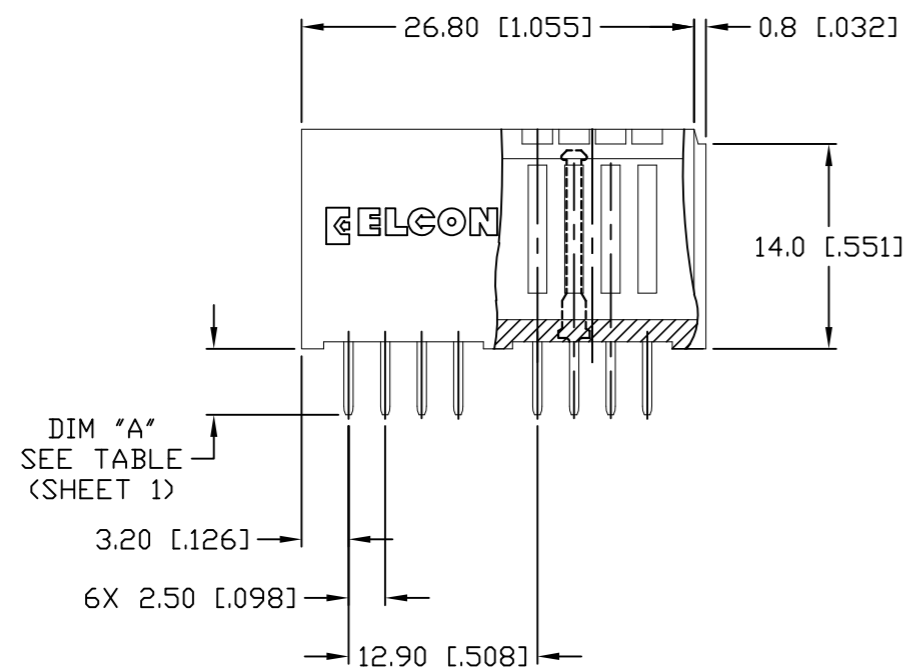
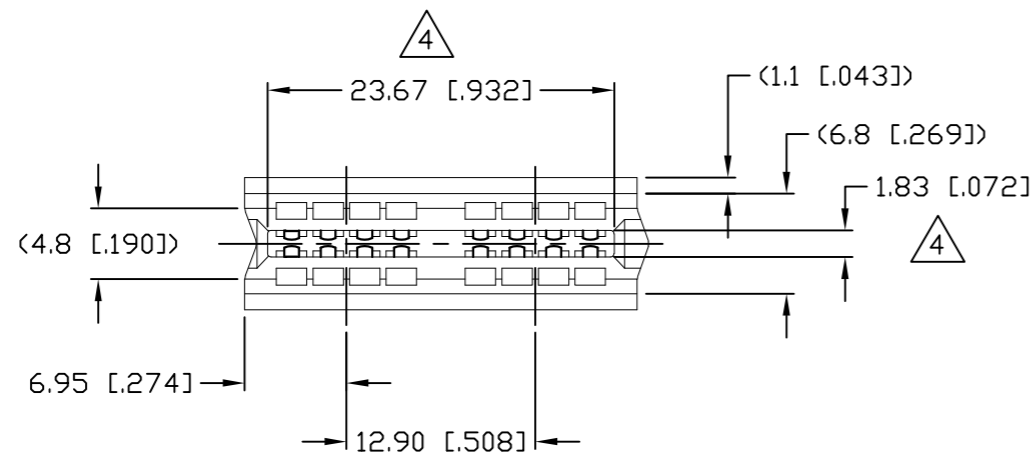
3

2

1

REVISIONS

EC	REV	DESCRIPTION	DATE
		SEE SHEET 1	



<p>← MM OR MM [INCH]</p> <p>INCH</p> <p>THIRD ANGLE PROJECTION</p> <p>UNLESS OTHERWISE SPECIFIED DIMENSIONS ARE IN METRIC [INCHES]</p> <p>TOLERANCES</p> <p>ANGLES ± .5°</p> <p>DECIMALS</p> <p>.XX ± .25 [.010]</p> <p>.X ± .5 [.020]</p>	<p>DRAWN</p> <p>HA NGUYEN</p>	<p>DATE</p> <p>06/24/04</p>	<p><b>STE</b> TE Connectivity</p>			
	<p>CHECKED</p>				<p>TITLE</p> <p>SOCKET CONNECTOR, CROWNEDGE STRAIGHT, 2 SEG, 16 SIGNAL, SOLDER PN: 287-0022-12100/287-0022-12300</p>	
	<p>APPROVED</p>		<p>APPROVED</p> <p>D. CHAU</p> <p>06/25/04</p>	<p>SIZE</p> <p>B</p>		
	<p>APPROVED</p> <p>M. ALIM</p> <p>07/21/04</p>	<p>ACAD FILE NUMBER</p> <p>C6650534A.DWG</p>		<p>DWG SCALE</p> <p>2=1</p>	<p>SH</p> <p>2 OF 5</p>	

4

3

2

1

4

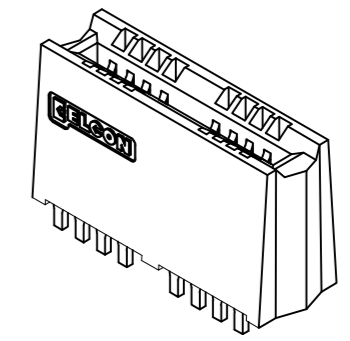
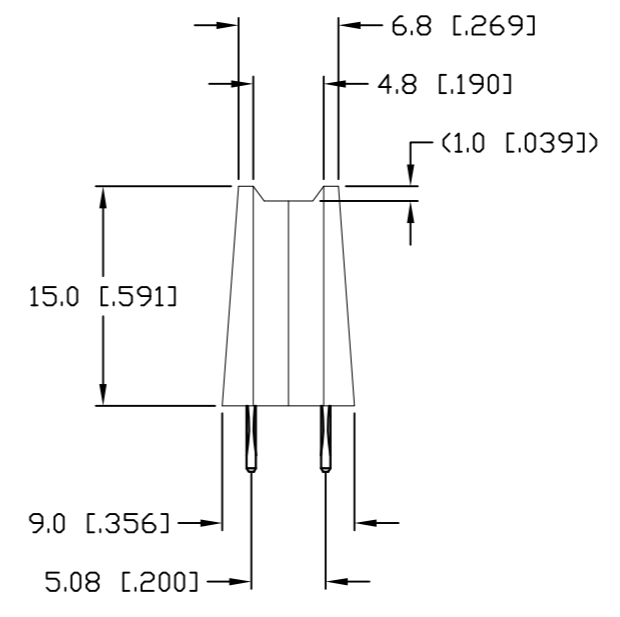
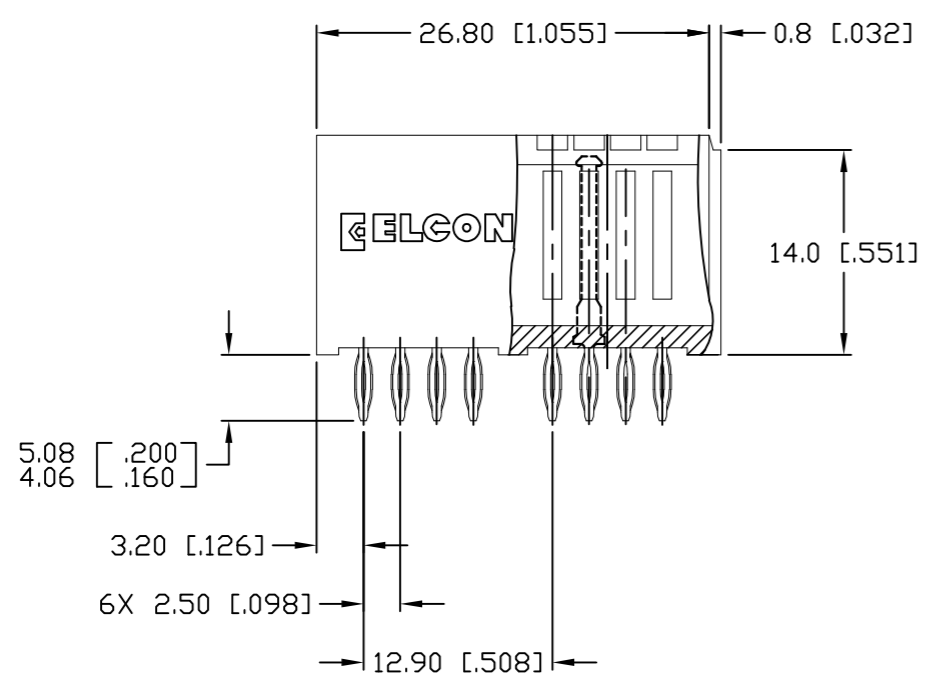
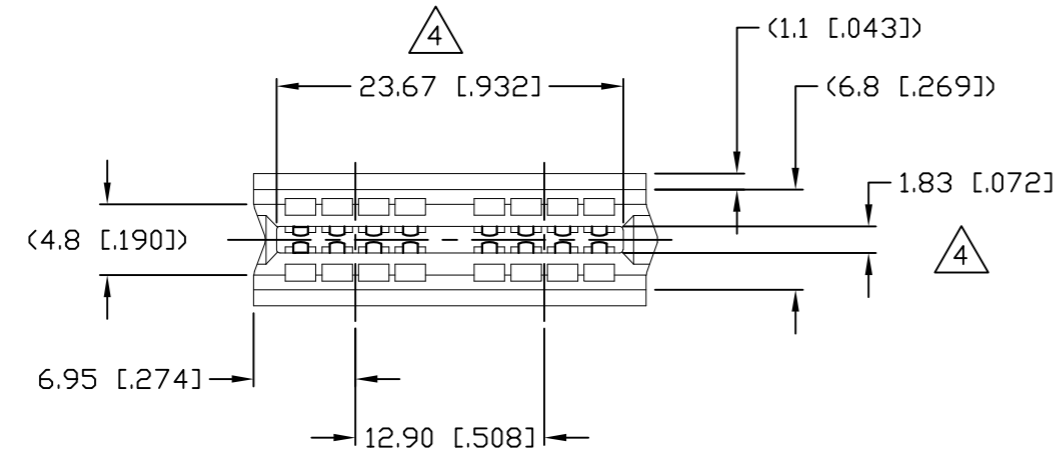
3

2

1

REVISIONS

EC	REV	DESCRIPTION	DATE
		SEE SHEET 1	



<p>← MM OR MM [INCH]</p> <p>INCH</p> <p>THIRD ANGLE PROJECTION</p> <p>UNLESS OTHERWISE SPECIFIED DIMENSIONS ARE IN METRIC [INCHES]</p> <p>TOLERANCES</p> <p>ANGLES ± .5°</p> <p>DECIMALS</p> <p>.XX ± .25 [.010]</p> <p>.X ± .5 [.020]</p>	<p>DRAWN</p> <p>HA NGUYEN</p>	<p>DATE</p> <p>06/24/04</p>	<p><b>STE</b> TE Connectivity</p>		
	<p>CHECKED</p>				<p>TITLE</p> <p>SOCKET CONNECTOR, CROWNEDGE STRAIGHT, 2 SEG, 16 SIGNAL, COMPLIANT PN: 287-0022-11300</p>
	<p>APPROVED</p>				
	<p>APPROVED</p>		<p>SIZE</p> <p>B</p>	<p>DWG NUMBER</p> <p>C = 6650534</p>	
	<p>D. CHAU</p> <p>06/25/04</p>	<p>M. ALIM</p> <p>07/21/04</p>	<p>ACAD FILE NUMBER C6650534A.DWG</p>		<p>DWG SCALE 2=1</p>

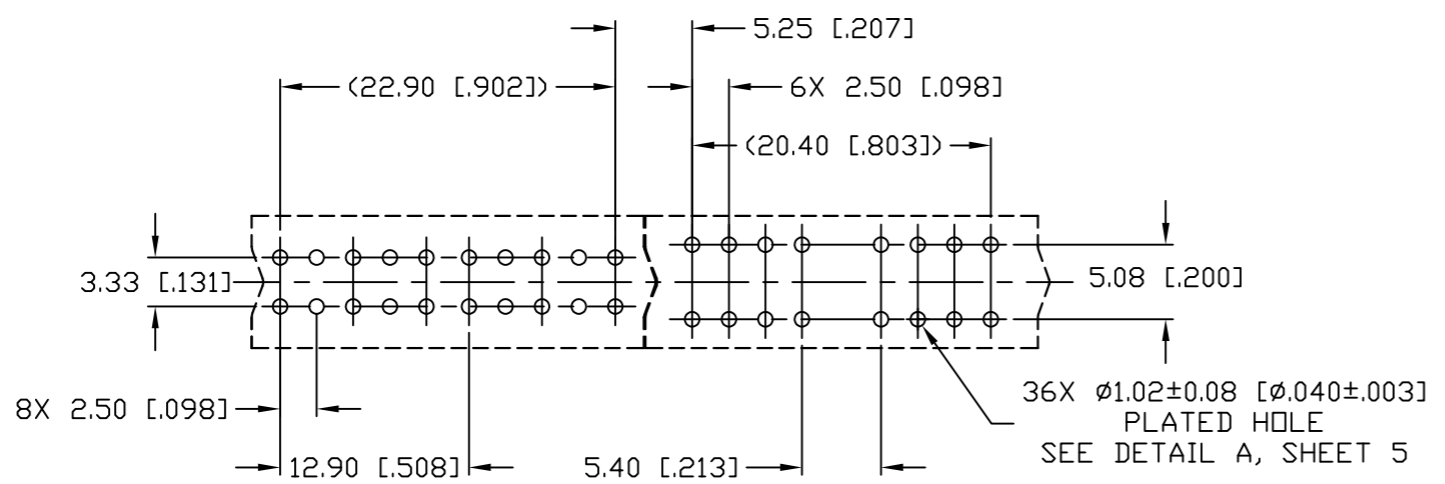
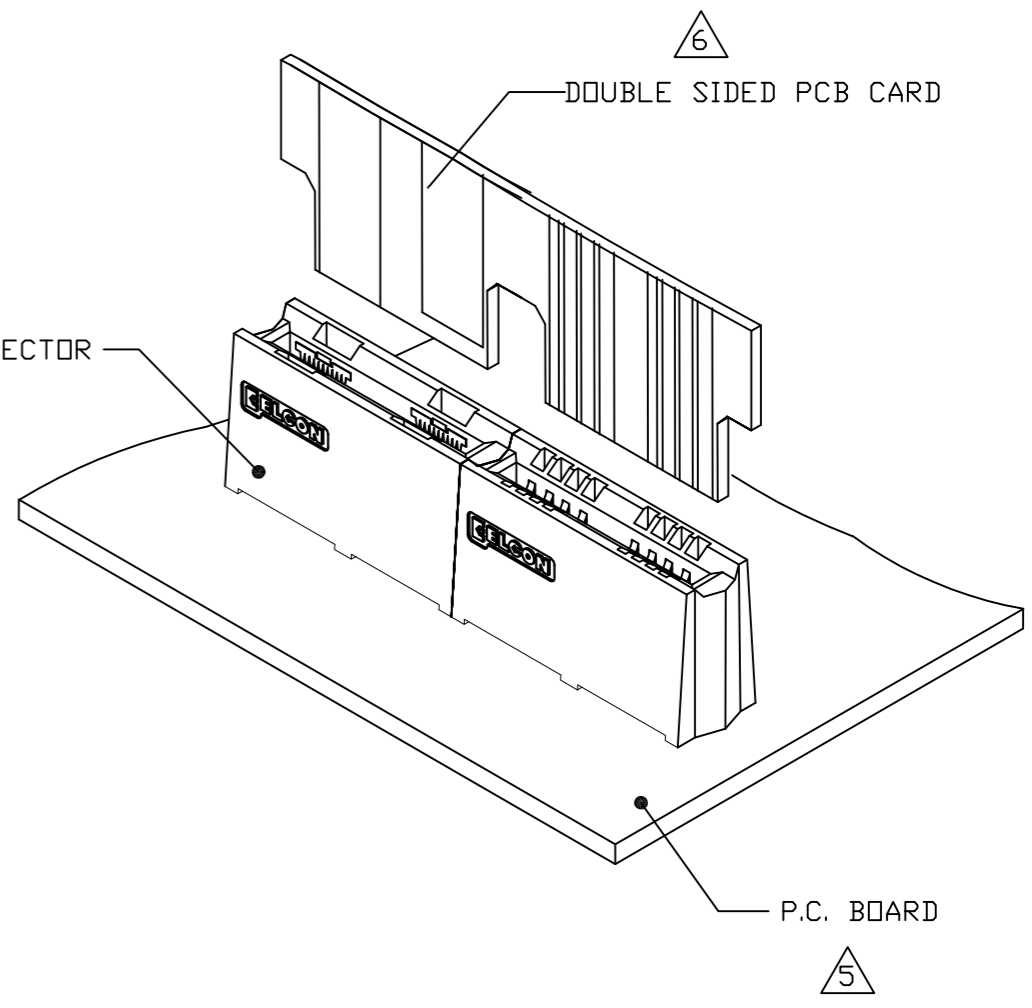
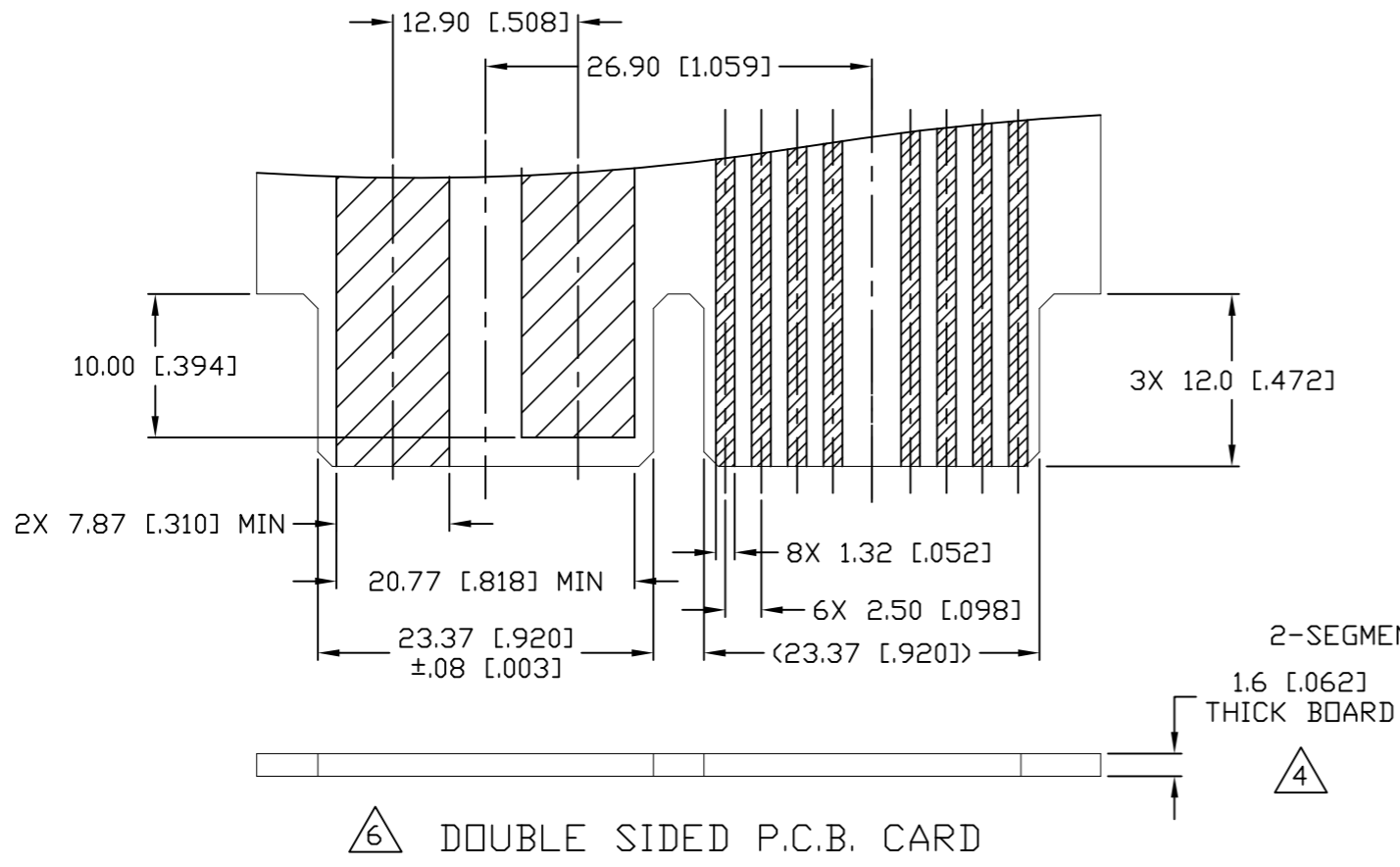
4

3

2

1

REVISIONS			
EC	REV	DESCRIPTION	DATE
SEE SHEET 1			



5 RECOMMENDED P.C. BOARD LAYOUT

<p>THIRD ANGLE PROJECTION</p> <p>UNLESS OTHERWISE SPECIFIED DIMENSIONS ARE IN METRIC [INCHES]</p> <p>TOLERANCES</p> <p>ANGLES ± .5°</p> <p>DECIMALS</p> <p>.XX ± .25 [.010]</p> <p>.X ± .5 [.020]</p>	<p>DRAWN</p> <p>HA NGUYEN</p>	<p>DATE</p> <p>06/24/04</p>	<p>TE Connectivity</p>			
	<p>CHECKED</p>				<p>TITLE</p> <p>USER INFORMATION</p> <p>RECOMMENDED PC BOARD LAYOUT</p> <p>CROWNEDGE</p>	
	<p>APPROVED</p>		<p>APPROVED</p> <p>D. CHAU</p> <p>06/25/04</p>	<p>SIZE</p> <p>B</p>		
	<p>APPROVED</p> <p>M. ALIM</p> <p>07/21/04</p>	<p>ACAD FILE NUMBER</p> <p>C6650534A.DWG</p>	<p>DWG SCALE</p> <p>2=1</p>	<p>SH 4 OF 5</p>		

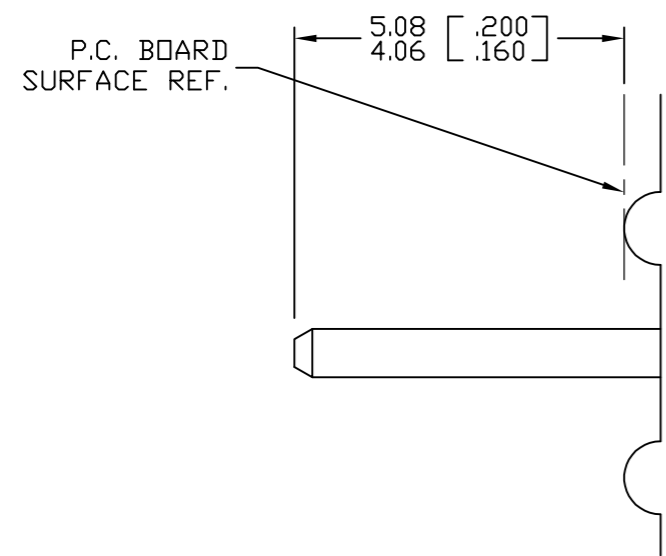
4

3

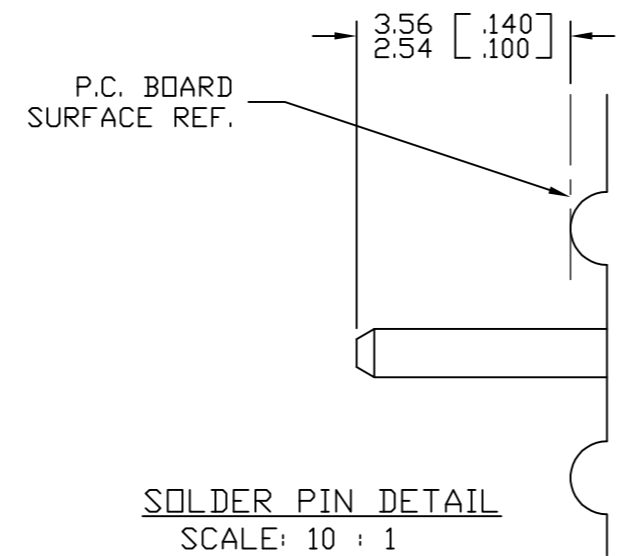
2

1

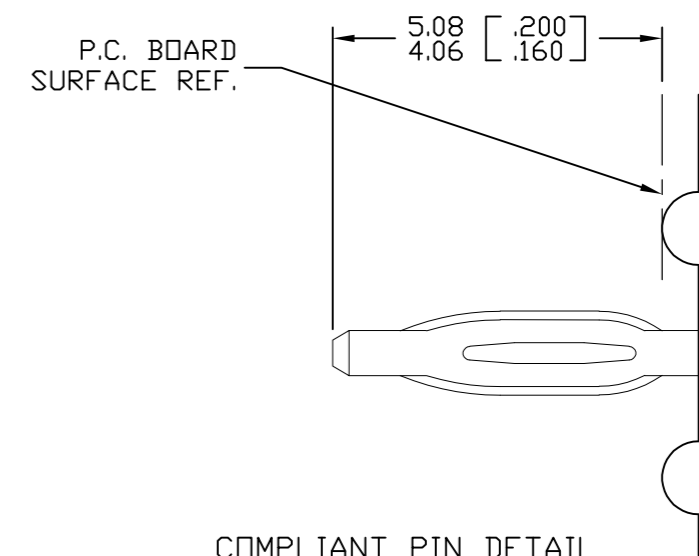
REVISIONS			
EC	REV	DESCRIPTION	DATE
		SEE SHEET 1	



SOLDER PIN DETAIL  
SCALE: 10 : 1



SOLDER PIN DETAIL  
SCALE: 10 : 1



COMPLIANT PIN DETAIL  
SCALE: 10 : 1  
INSERTION/EXTRACTION FORCES  
MAXIMUM PUSH IN: 133.3N PER PIN [30 LBS]  
MINIMUM PUSH OUT: 44.4N PER PIN [10 LBS]

RECOMMENDED PRINTED CIRCUIT HOLE  
SOLDER OR COMPLIANT PRESS FIT  
FINISHED HOLE:  $\phi 1.02$  [.040]  $\pm 0.08$  [.003]  
DRILLED HOLE:  $\phi 1.15$  [.0453]  $\pm 0.013$  [.0005]  
COPPER PLATE: .025 [.0010] MINIMUM (PER SURFACE)  
TIN PLATE: .008 [.0003] MINIMUM (PER SURFACE)

DETAIL A

← MM INCH → OR MM [INCH]   THIRD ANGLE PROJECTION  UNLESS OTHERWISE SPECIFIED DIMENSIONS ARE IN METRIC [INCHES]  TOLERANCES ANGLES $\pm .5^\circ$  DECIMALS .XX $\pm .25$ [.010] .X $\pm .5$ [.020]	DRAWN HA NGUYEN	DATE 06/24/04	TE Connectivity  TITLE USER INFORMATION SOLDER & COMPLIANT TERMINATION CROWNEDGE  SIZE DWG NUMBER REV. B C = 6650534 A2
	CHECKED		
	APPROVED		
	APPROVED D. CHAU	06/25/04	
	DCA APPROVED M. ALIM	07/21/04	
ACAD FILE NUMBER C6650534A.DWG		DWG SCALE 2=1	SH 5 OF 5

4

3

2

1

单击下面可查看定价，库存，交付和生命周期等信息

[>>TE Connectivity\(泰科\)](#)