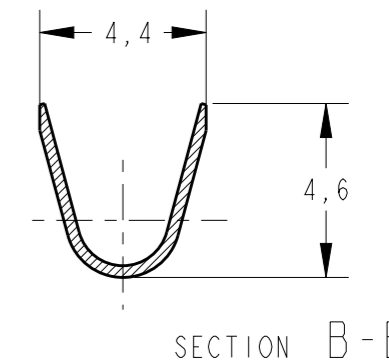
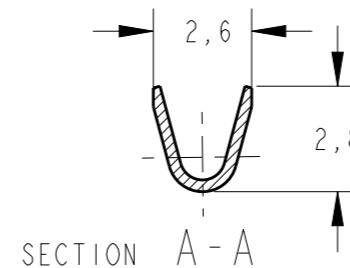
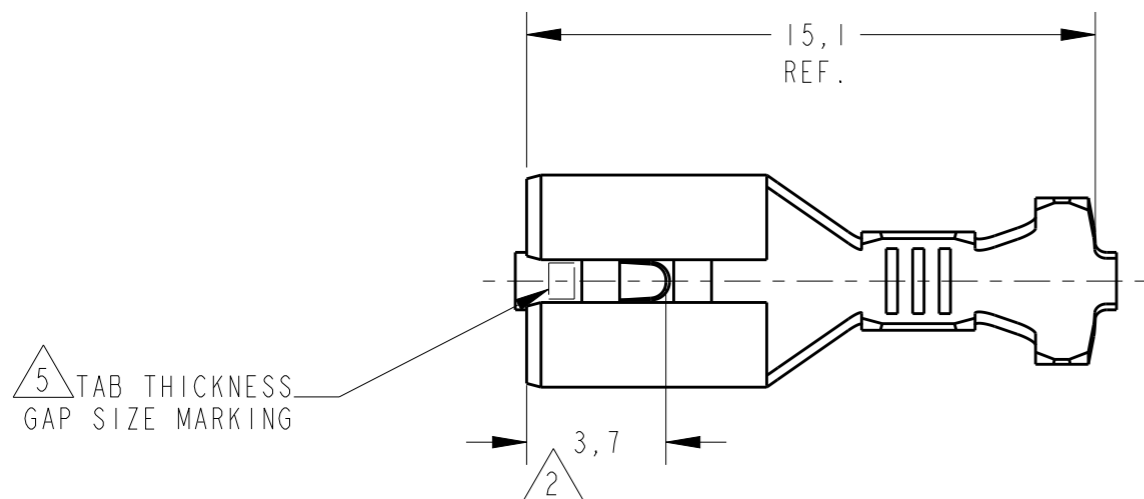


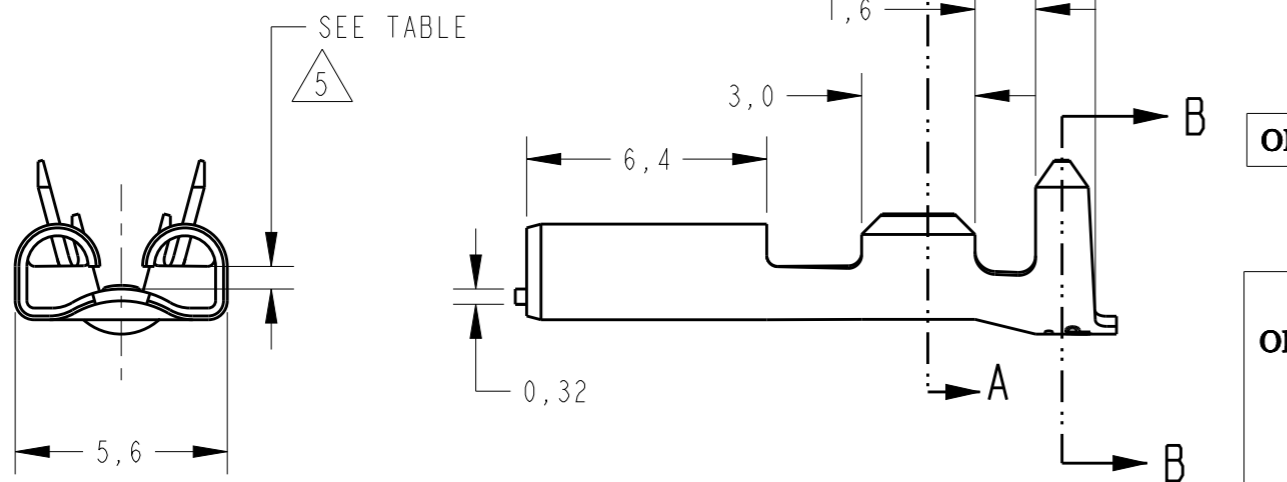
THIS DRAWING IS UNPUBLISHED. RELEASED FOR PUBLICATION 20
 © COPYRIGHT 20 BY - ALL RIGHTS RESERVED.

REVISIONS

P	LTR	DESCRIPTION	DATE	DWN	APVD
	J	REV. BY ECO 17-008400	23JUN2017	HC	WLS



- 1 - PEÇA SOLTA - VER DESENHO 444201.
LOOSE PIECE - SEE DRAWING 444201.
- 2 - LOCALIZAÇÃO DO DIMPLE - 3,0mm PARA O PN 1-881623-0
DIMPLE LOCATION 3,0mm. FOR PN 1-881623-0.
- 3 - OBSOLETE PARTS: OBSOLETE CIS STREAMLINING PER D.RENAUD/D.SINISI
- 4 - HEAT TREATMENT.



5	FOR TAB THICKNESS	FINISH	MATERIAL	PART NUMBER
	0,5	—	LATÃO/BRASS	4 1-881623-1
OBSOLETE	0,8	—	LATÃO/BRASS	2 1-881623-0
	0,5	ESTANHADO/TIN PLATED	LATÃO/BRASS	1 881623-9
	0,5	—	LATÃO/BRASS	1 881623-8
OBSOLETE	OBSOLETE	ESTANHADO/TIN PLATED	LATÃO/BRASS	881623-7
OBSOLETE	OBSOLETE	—	LATÃO/BRASS	881623-6
	0,8	NIQUELADO/NICKEL PLATED	AÇO/STEEL	881623-5
	0,8	—	AÇO/STEEL	881623-4
	0,8	ESTANHADO/TIN PLATED	BRONZE/PH.BRONZE	881623-3
	0,8	ESTANHADO/TIN PLATED	LATÃO/BRASS	1 881623-2
	0,8	—	LATÃO/BRASS	1 881623-1

INSERTION AND EXTRACTION REQUIREMENTS	1st ON (N)MAX	1st OFF (N)MIN	6th ON (N)MIN
	46	28	15

THIS DRAWING IS A CONTROLLED DOCUMENT.

DIMENSIONS:	TOLERANCES UNLESS OTHERWISE SPECIFIED:
mm	
	0 PLC ±-
	1 PLC ±0,3
	2 PLC ±-
	3 PLC ±-
	4 PLC ±-
ANGLES	±1°

MATERIAL SEE TABLE FINISH SEE TABLE

DWN	20JUN2017
H.C.CANTER	
CHK	26JUN2017
W.L.STEFANI	
APVD	-
PRODUCT SPEC	-
APPLICATION SPEC	-
WEIGHT	-
CUSTOMER DRAWING	



NAME			
.187 SERIES FASTON REC.			
SIZE	CAGE CODE	DRAWING NO	RESTRICTED TO
A3	-	881623	-
SCALE	SHEET	OF	REV
5/1	1	1	J

单击下面可查看定价，库存，交付和生命周期等信息

[>>TE Connectivity\(泰科\)](#)