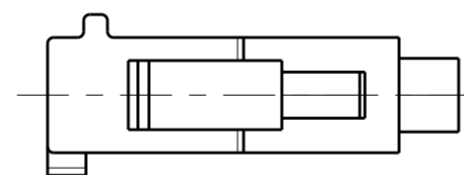
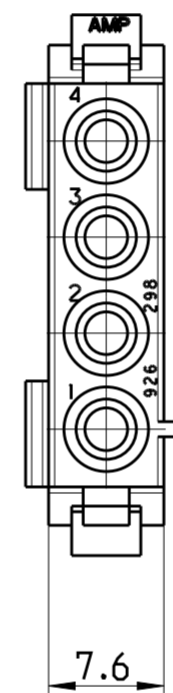
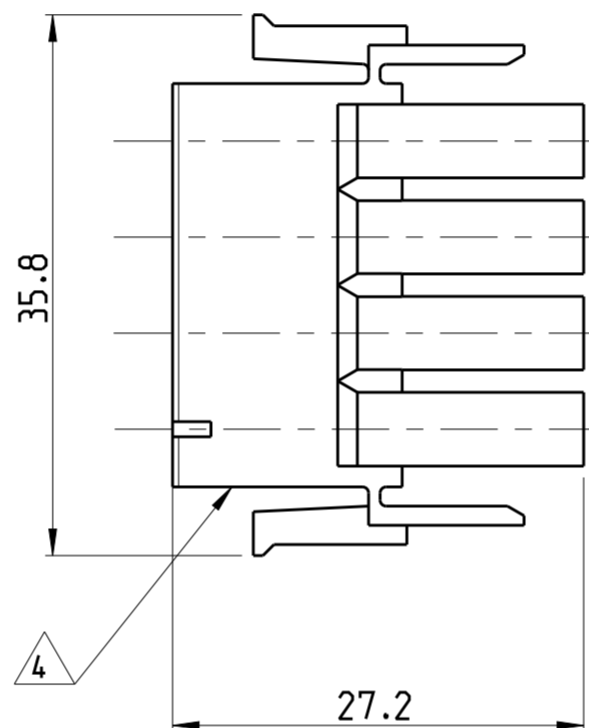
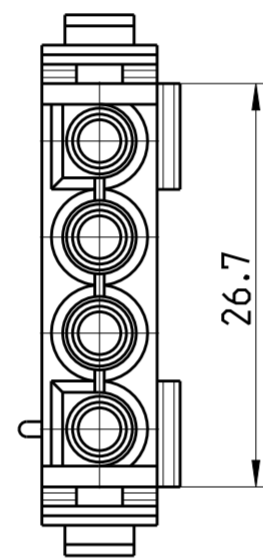


THIS DRAWING IS UNPUBLISHED. RELEASED FOR PUBLICATION 20
 © COPYRIGHT 20 BY - ALL RIGHTS RESERVED.

LOC		DIST		REVISIONS			
P	LTR	DESCRIPTION		DATE	DWN	APVD	
	F7	REVISED PER ECR-17-014951		16OCT2017	BDA	KR	

- 1 NEUES MATERIAL (PHOSPHOR UND HALOGEN FREI)
- 2 MATERIAL CORRESPONDING TO THE REQUIREMENT OF IEC60335-1 (INCL. GWT 750 °C WITHOUT FLAME)
- 3 COLOR OF HOUSINGS MAY RANGE FROM CLEAR TO GREEN OR YELLOW DUE TO HYGROSCOPIC NATURE OF RESIN.HOWEVER IT DOESN'T AFFECT THE FORM, FIT AND FUNCTION OF THE PRODUCT.
- 4 CSA CERTIFICATION LOGO LOCATED AT LEAST ONE SIDE OF THE HOUSING APPROXIMATELY AS SHOWN.
- 5 DIMENSIONS SHOWN REPRESENT PRODUCT IN DRY, AS MOLDED, CONDITION. ADDITIONAL 2% GROWTH DUE TO SUBSEQUENT MOISTURE ABSORPTION MAY OCCUR AND SHOULD BE ACCOUNTED FOR.



926298-7	PA66 UL94 V-0 NATURAL	2
926298-6	PA6.6 UL94 V2 NATURAL	2
926298-5	PA 6.6 UL94 V2 NATURAL	
926298-4	PA6.6 UL94 V-0 weiß	
926298-3	PA6.6 UL94 V-0 NATURAL	
926298-2	PA6.6 UL94 V-0 SCHWARZ	1
926298-1	PA66 UL94 V-2 NATURAL	3

PART NUMBER MATERIAL

THIS DRAWING IS A CONTROLLED DOCUMENT.		DWN	10FEB2014	STE		TE Connectivity	
DIMENSIONS:		CHK	10FEB2014	NAME UNIVERSAL MATE-N-LOK 4 WAY PLUG			
mm		APVD	10FEB2014				
TOLERANCES UNLESS OTHERWISE SPECIFIED:		RRP	10FEB2014	PRODUCT SPEC			
0 PLC ±				108-1031			
1 PLC ±0.2				APPLICATION SPEC			
2 PLC ±				114-18011			
3 PLC ±				WEIGHT			
4 PLC ±				-			
ANGLES ±				CUSTOMER DRAWING			
FINISH				SCALE 2:1 SHEET 1 OF 1 REV F7			
MATERIAL REFER TABLE				SIZE A2 CAGE CODE - DRAWING NO C-926298 RESTRICTED TO -			

单击下面可查看定价，库存，交付和生命周期等信息

[>>TE Connectivity\(泰科\)](#)