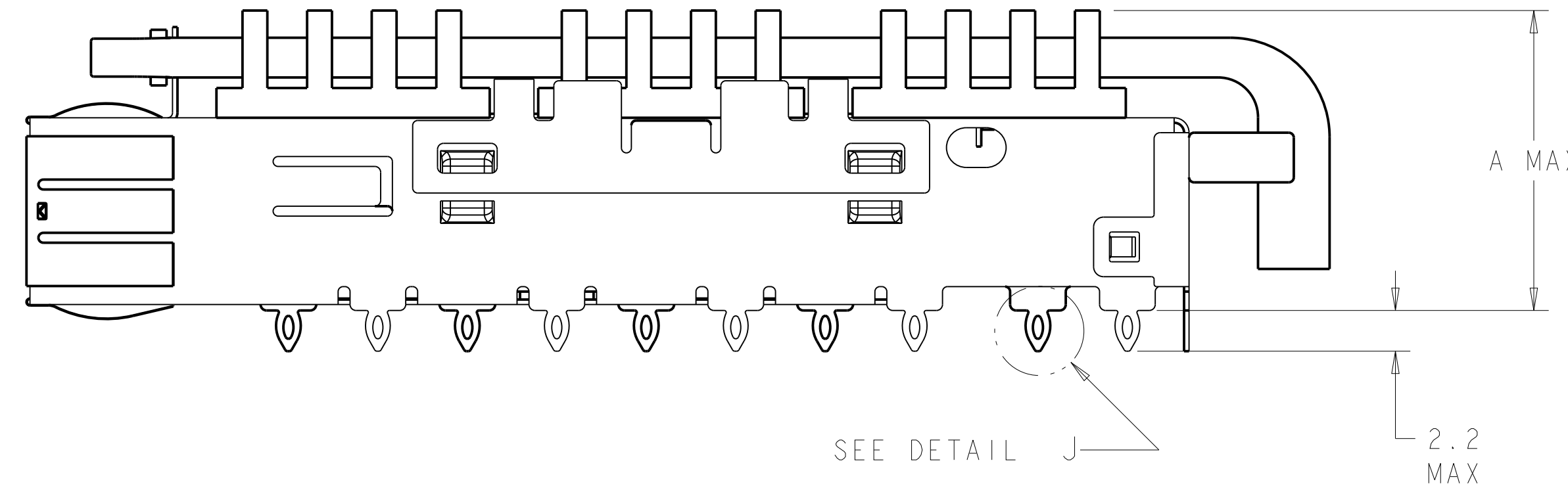
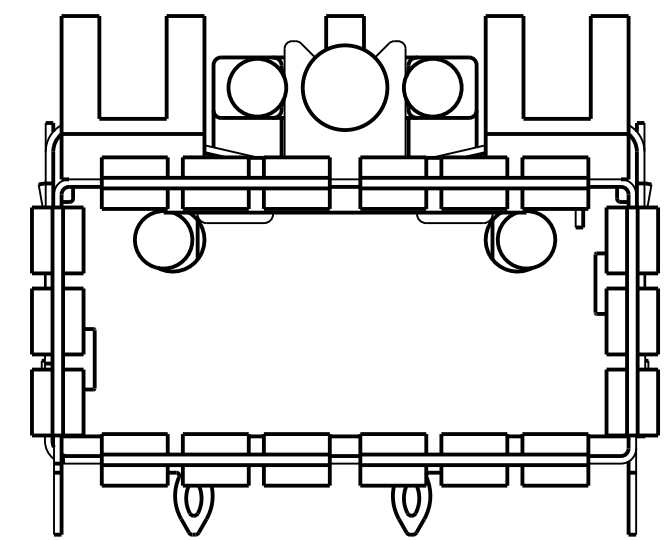
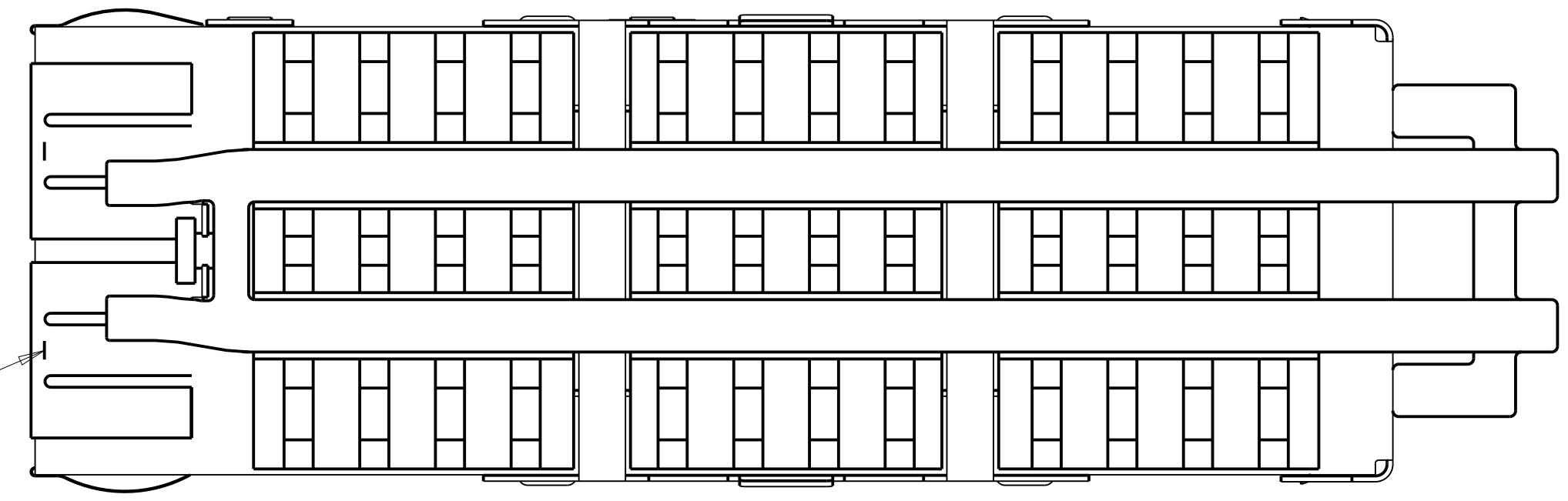


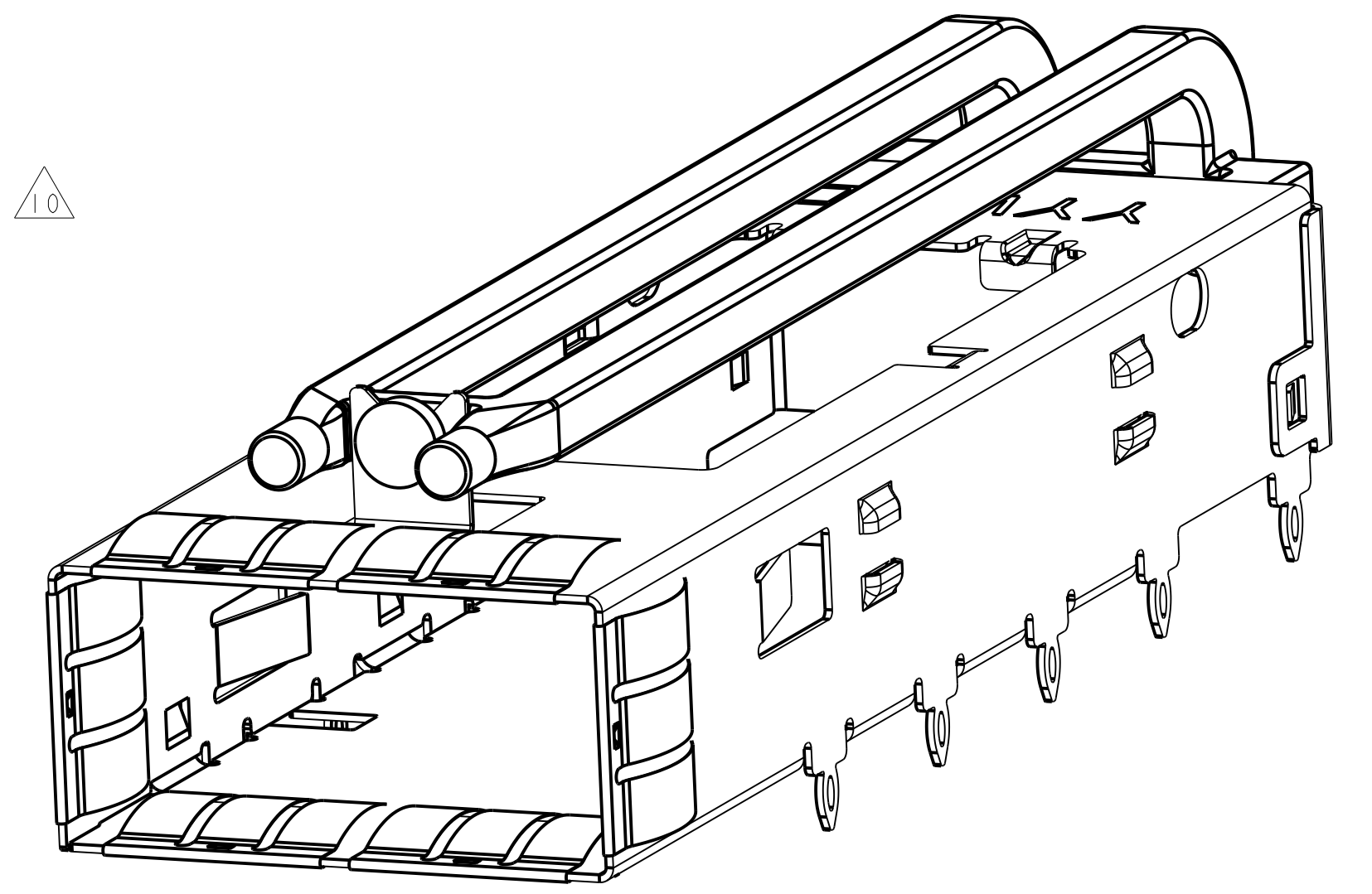
LOC	DIST	REVISIONS			
GP	00	REV	DATE	BY	CHK
		A1	08APR2011	AL	CW
		A2	18AUG2014	RG	MC

- △ MATERIAL:
 CAGE: NICKEL SILVER, 0.25 THICK
 HEAT SINK: ALUMINUM
 HEAT SINK CLIP: STAINLESS STEEL
 EMI SPRINGS: COPPER ALLOY
 LIGHT PIPE: CLEAR POLYCARBONATE.
- △ MINIMUM PITCH DIMENSION.
3. MATES WITH SFF-8436 COMPATIBLE TRANSCEIVER.
- △ REFERENCE APPLICATION SPEC 114-13217 FOR RECOMMENDED DRILL HOLE DIAMETER AND PLATING THICKNESS.
- △ DATUMS AND BASIC DIMENSIONS ESTABLISHED BY CUSTOMER.
6. MINIMUM PC BOARD THICKNESS:
 SINGLE SIDED = 1.45mm (shown, pg. 4)
 DOUBLE SIDED = 2.2mm.
- △ HEATSINK, LIGHT PIPE, AND CLIP SHIPPED ASSEMBLED TO CAGE ASSEMBLY. CAGE ASSEMBLY MAY BE PRESSED INTO THE PCB AS SHIPPED.
- △ DATUM -A- IS TOP SURFACE OF HOST BOARD.
- △ SURFACE TRACES PERMITTED WITHIN THIS LENGTH EXCEPT WHERE CAGE STANDOFFS, SHOWN IN DETAIL J, CONTACT PC BOARD.
- △ DIMENSION APPLIES WITH MODULE INSTALLED IN CAGE.
11. MAXIMUM HEIGHT OF CUSTOMER SUPPLIED LED OFF BOARD: 1.70mm.
- △ DATE CODE (YYWW) MARKED ON TOP OF CAGE AND CONCEALED BY HEAT SINK APPLIES TO CAGE ASSEMBLY ONLY.
- △ HEAT SINK AND CLIP SHIPPED ASSEMBLED TO CAGE ASSEMBLY. CAGE ASSEMBLY MAY BE PRESSED INTO THE PCB AS SHIPPED. LIGHT PIPE MUST BE ASSEMBLED BY CUSTOMER AFTER THE CAGE IS SEATED ON THE PCB.
- △ SPRING FINISH: 0.8um MIN TIN OVER 0.8um MIN NICKEL.
 HEAT SINK FINISH: NICKEL.
15. PRODUCT HAS NOT COMPLETED QUALIFICATION TESTING.

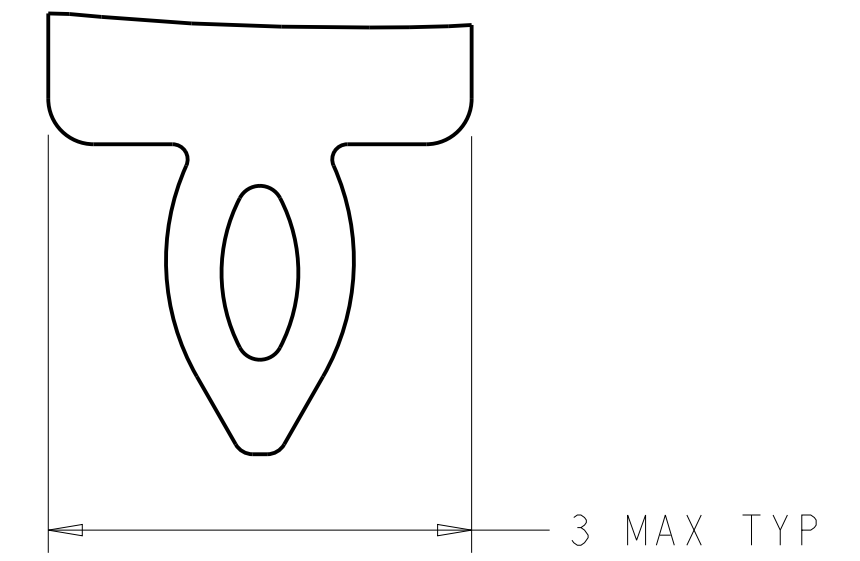
Sn42Bi58 SOLDER
 6 PLACES



SEE DETAIL J



1888971-4 AS SHOWN
 SCALE 5:1



DETAIL J
 SCALE 20:1

DESCRIPTION	PART NUMBER
- NO HEAT SINK	1888971-4
13.7 PCI HEAT SINK	1888971-3
23.0 NETWORKING HEAT SINK	1888971-2
16.0 SAN HEAT SINK (SHOWN)	1888971-1

THIS DRAWING IS A CONTROLLED DOCUMENT.

OWN: C. VALENTINE 22FEB2007
 CHK: E. BRIGHT 22FEB2007
 APVD: E. BRIGHT 22FEB2007

STE TE Connectivity

NAME: CAGE ASSEMBLY, THRU BEZEL, QSFP, W/ HEAT SINK AND DOUBLE LIGHT PIPE

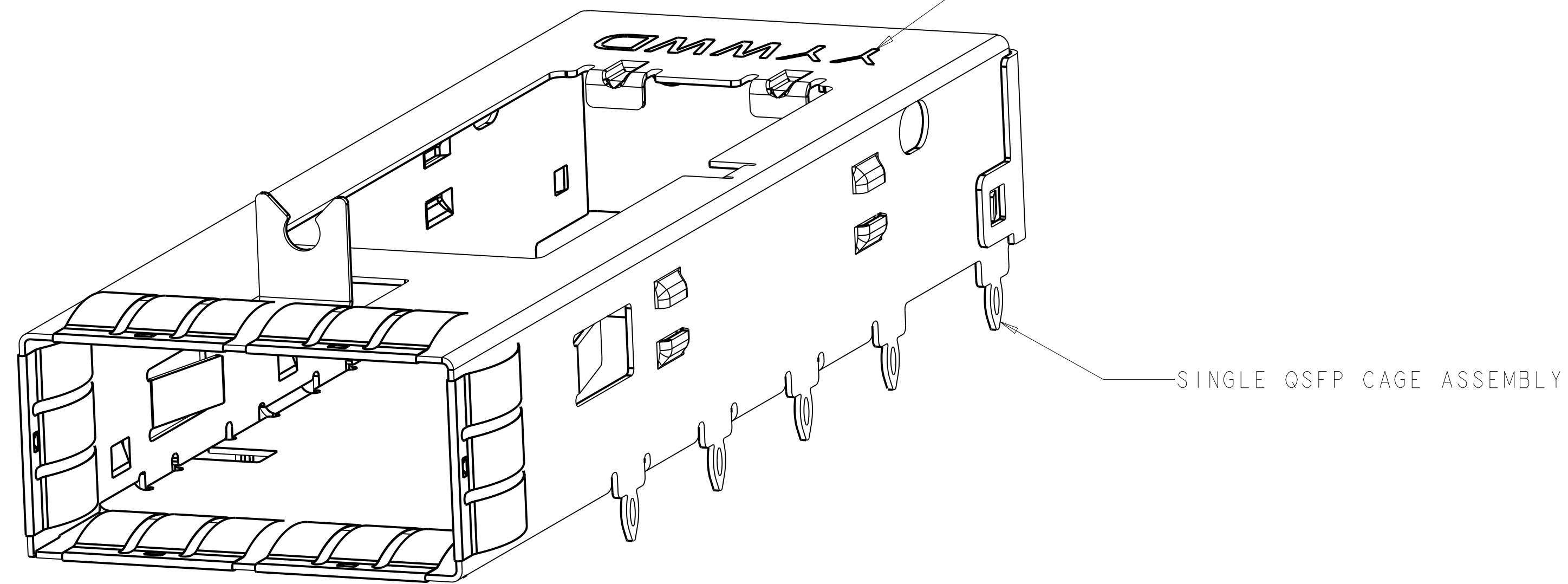
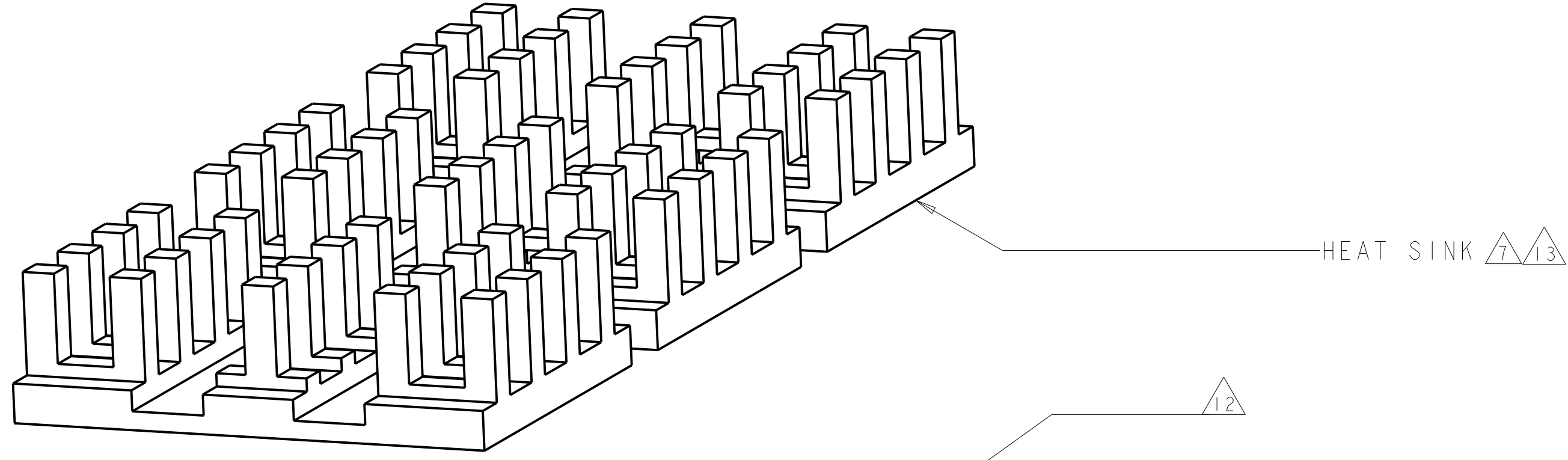
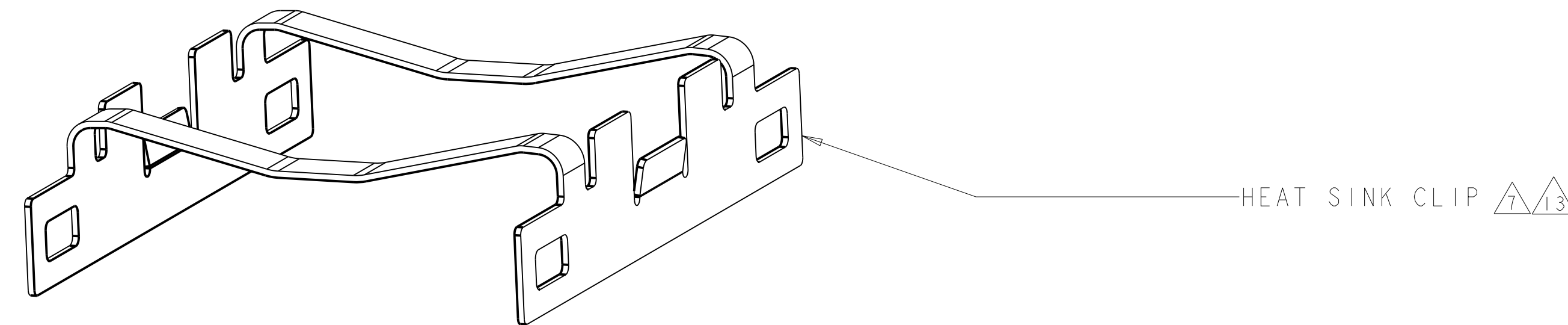
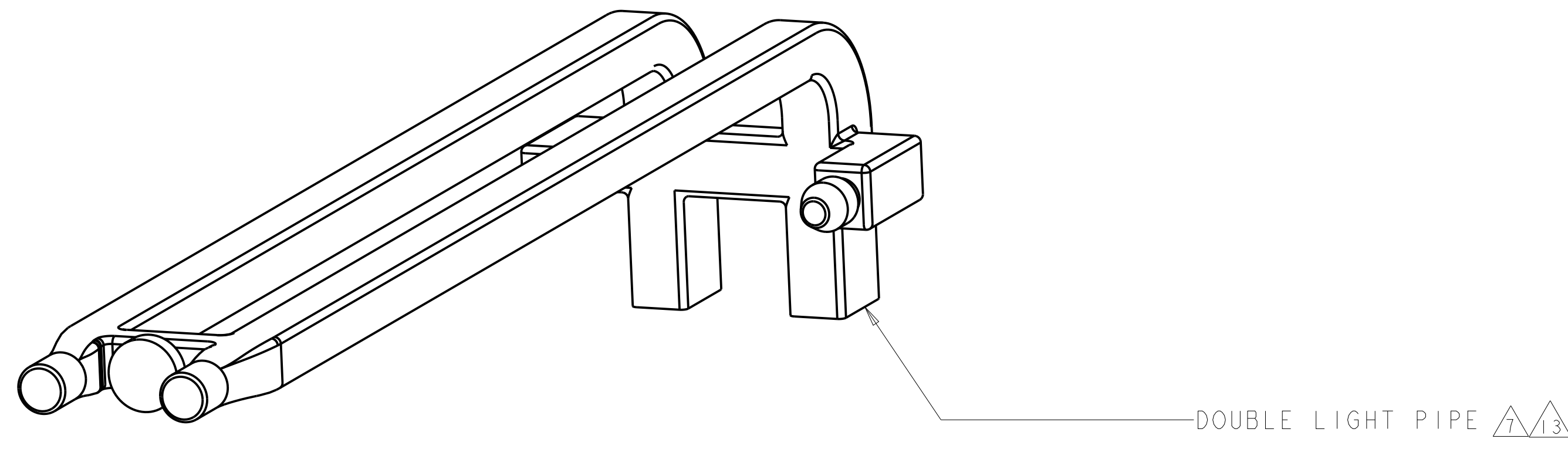
PRODUCT SPEC: 108-2286
 APPLICATION SPEC: 114-13217

SIZE: CAGE CODE DRAWING NO: A100779C=1888971
 WEIGHT: -

MATERIAL: △
 FINISH: △14

Customer Drawing SCALE 4:1 SHEET 1 OF 4 REV A2

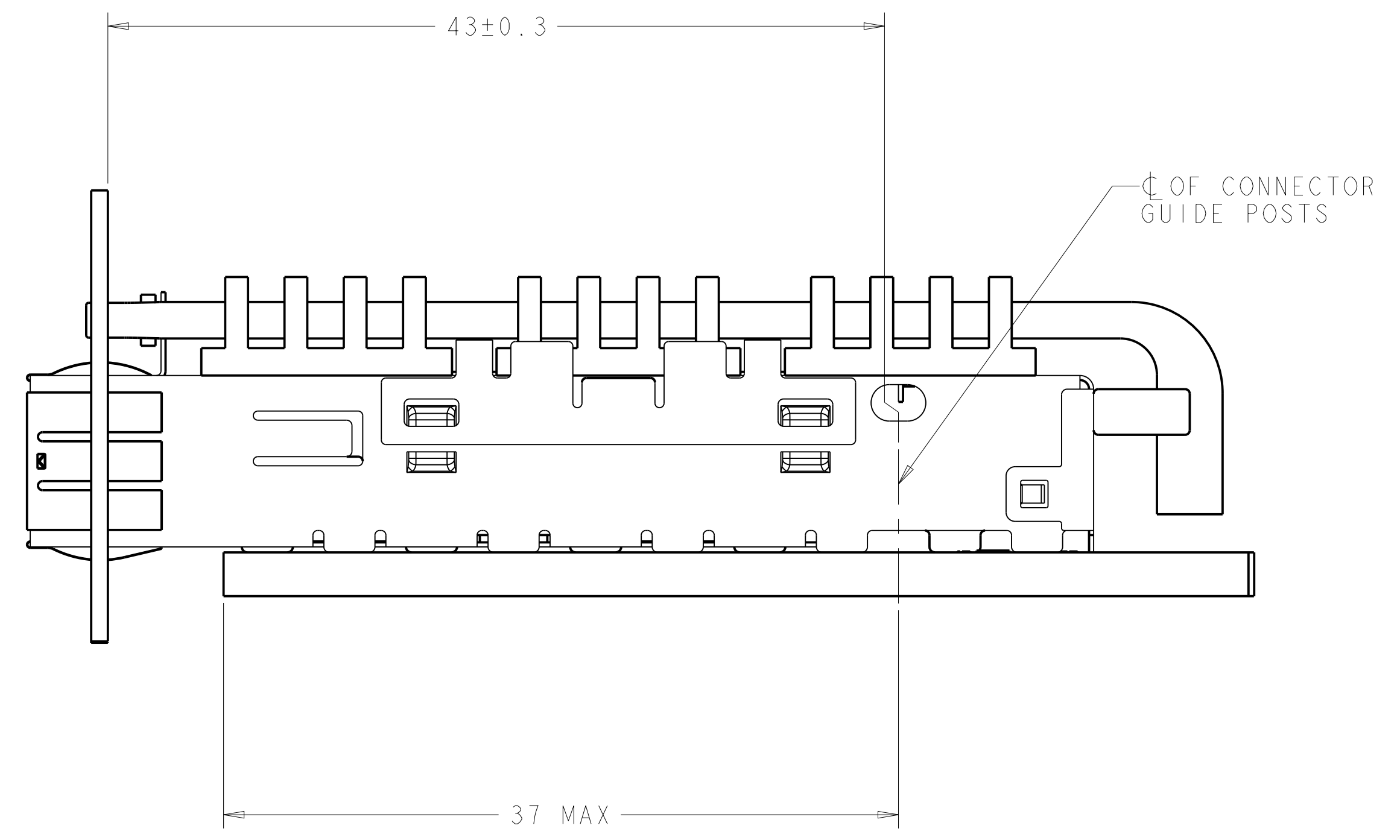
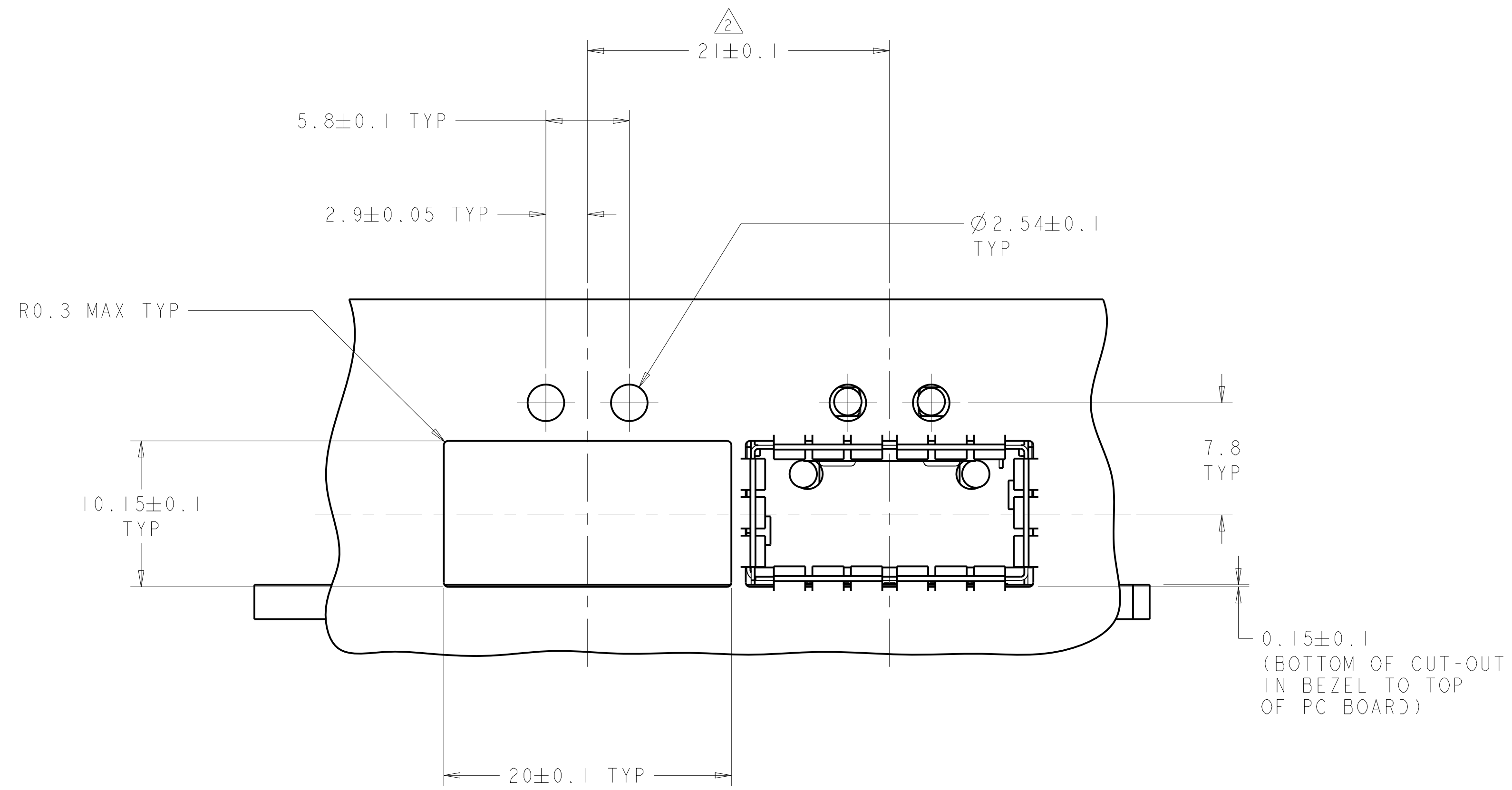
LOC		DIST		REVISONS			
GP	00	P	LTN	DESCRIPTION	DATE	DWN	APVD
		-		SEE SHEET 1			



ISOMETRIC EXPLODED VIEW
 SCALE 6:1

THIS DRAWING IS A CONTROLLED DOCUMENT.		DWN C. VALENTINE 22FEB2007	TE Connectivity														
DIMENSIONS: mm		CHK E. BRIGHT 22FEB2007															
<table border="1"> <tr> <td>0 PLC</td> <td>±0.13</td> </tr> <tr> <td>1 PLC</td> <td>±0.13</td> </tr> <tr> <td>2 PLC</td> <td>±0.13</td> </tr> <tr> <td>3 PLC</td> <td>±0.013</td> </tr> <tr> <td>4 PLC</td> <td>±0.0001</td> </tr> <tr> <td>ANGLES</td> <td>±0.0001</td> </tr> <tr> <td>FINISH</td> <td>-</td> </tr> </table>		0 PLC	±0.13	1 PLC	±0.13	2 PLC	±0.13	3 PLC	±0.013	4 PLC	±0.0001	ANGLES	±0.0001	FINISH	-	APVD E. BRIGHT 22FEB2007	NAME CAGE ASSEMBLY, THRU BEZEL, QSFP, W/ HEAT SINK AND DOUBLE LIGHT PIPE
0 PLC	±0.13																
1 PLC	±0.13																
2 PLC	±0.13																
3 PLC	±0.013																
4 PLC	±0.0001																
ANGLES	±0.0001																
FINISH	-																
MATERIAL -		PRODUCT SPEC 108-2286	SIZE A100779C=1888971														
		APPLICATION SPEC 114-13217	RESTRICTED TO -														
		WEIGHT -	SCALE 4:1 SHEET 2 OF 4 REV A2														
		Customer Drawing															

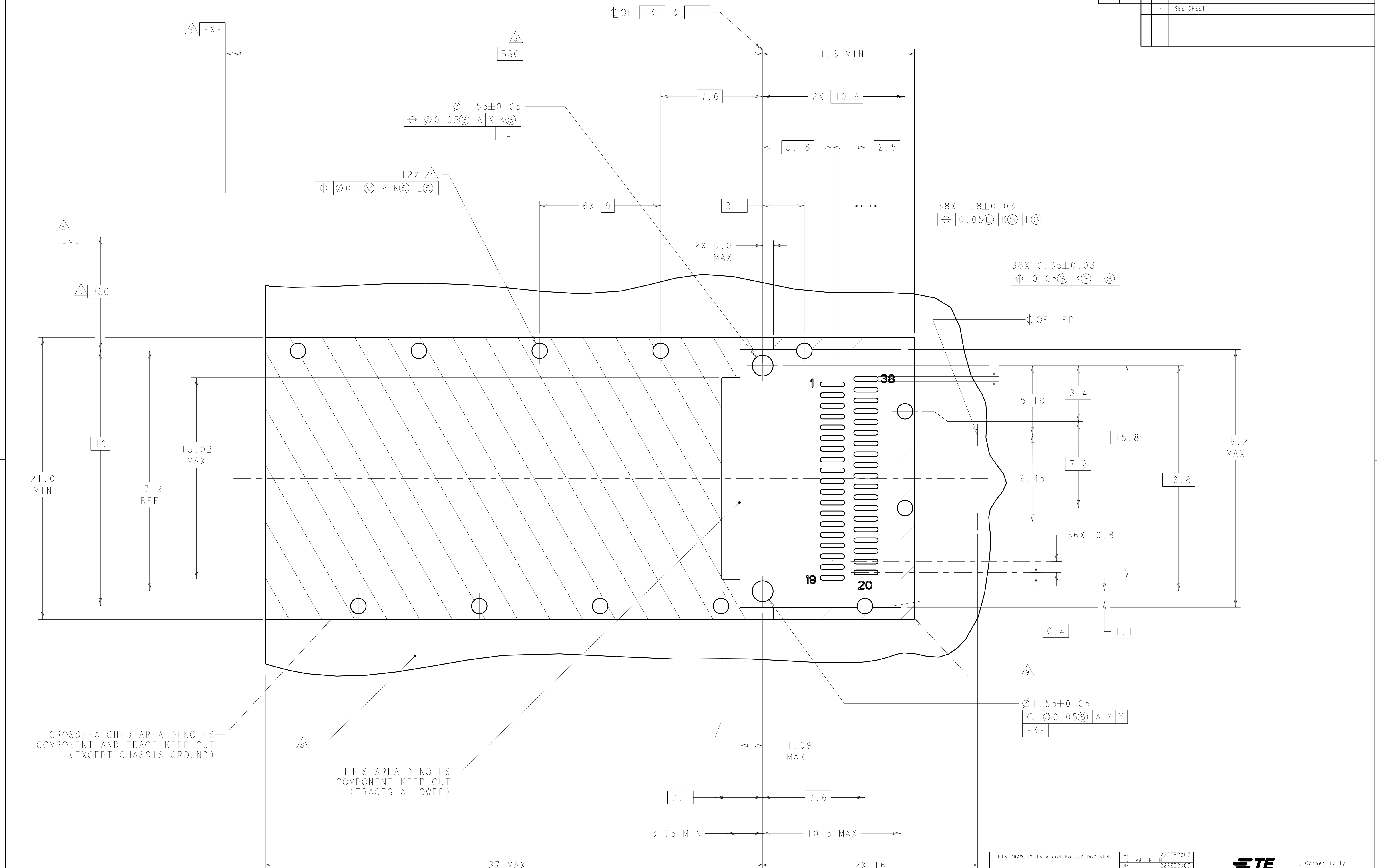
LOC		DIST		REVISIONS			
P	LTN	DESCRIPTION	DATE	DMN	APVD		
-	-	SEE SHEET 1	-	-	-		



THIS DRAWING IS A CONTROLLED DOCUMENT.		DMN C. VALENTINE 22FEB2007	TE Connectivity
DIMENSIONS: mm		CHK E. BRIGHT 22FEB2007	
TOLERANCES UNLESS OTHERWISE SPECIFIED:		APVD E. BRIGHT 22FEB2007	NAME CAGE ASSEMBLY, THRU BEZEL, QSFP, W/ HEAT SINK AND DOUBLE LIGHT PIPE
0 PLC	±0.13	PRODUCT SPEC	108-2286
2 PLC	±0.13	APPLICATION SPEC	114-13217
3 PLC	±0.013	WEIGHT	-
4 PLC	±0.0001	RESTRICTED TO	-
ANGLES	±0.0001	SCALE	4:1
MATERIAL	-	SHEET	3 OF 4
FINISH	-	REV	A2
Customer Drawing		A100779C=1888971	

LOC	DIST	REV	DATE	BY	APPV
GP	00				

REVISIONS					
REV	DATE	BY	APPV	DESCRIPTION	
-	-	-	-	SEE SHEET 1	



CROSS-HATCHED AREA DENOTES COMPONENT AND TRACE KEEP-OUT (EXCEPT CHASSIS GROUND)

THIS AREA DENOTES COMPONENT KEEP-OUT (TRACES ALLOWED)

RECOMMENDED PC BOARD LAYOUT
 SCALE 8:1

THIS DRAWING IS A CONTROLLED DOCUMENT.		DWN C. VALENTINE 22FEB2007	TE Connectivity
DIMENSIONS: mm		CHK E. BRIGHT 22FEB2007	
TOLERANCES UNLESS OTHERWISE SPECIFIED:		APVD E. BRIGHT 22FEB2007	NAME CAGE ASSEMBLY, THRU BEZEL, QSPF, W/ HEAT SINK AND DOUBLE LIGHT PIPE
0 PLC	±0.13	PRODUCT SPEC	108-2286
2 PLC	±0.13	APPLICATION SPEC	114-13217
3 PLC	±0.13	WEIGHT	A100779C=1888971
4 PLC	±0.013	Customer Drawing	SCALE 4:1 SHEET 4 OF 4 REV A2
ANGLES	±0.0001		
FINISH			

单击下面可查看定价，库存，交付和生命周期等信息

[>>TE Connectivity\(泰科\)](#)