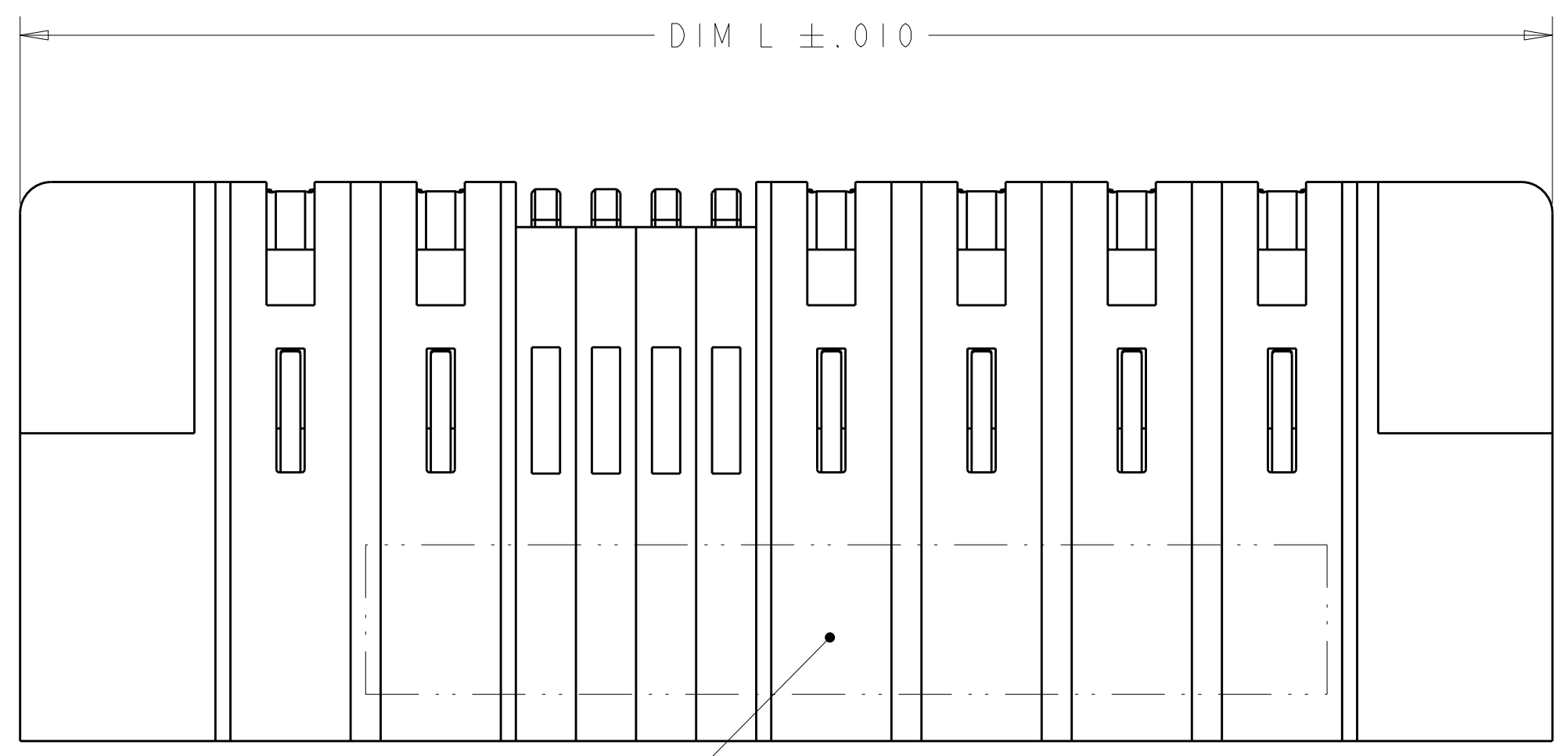
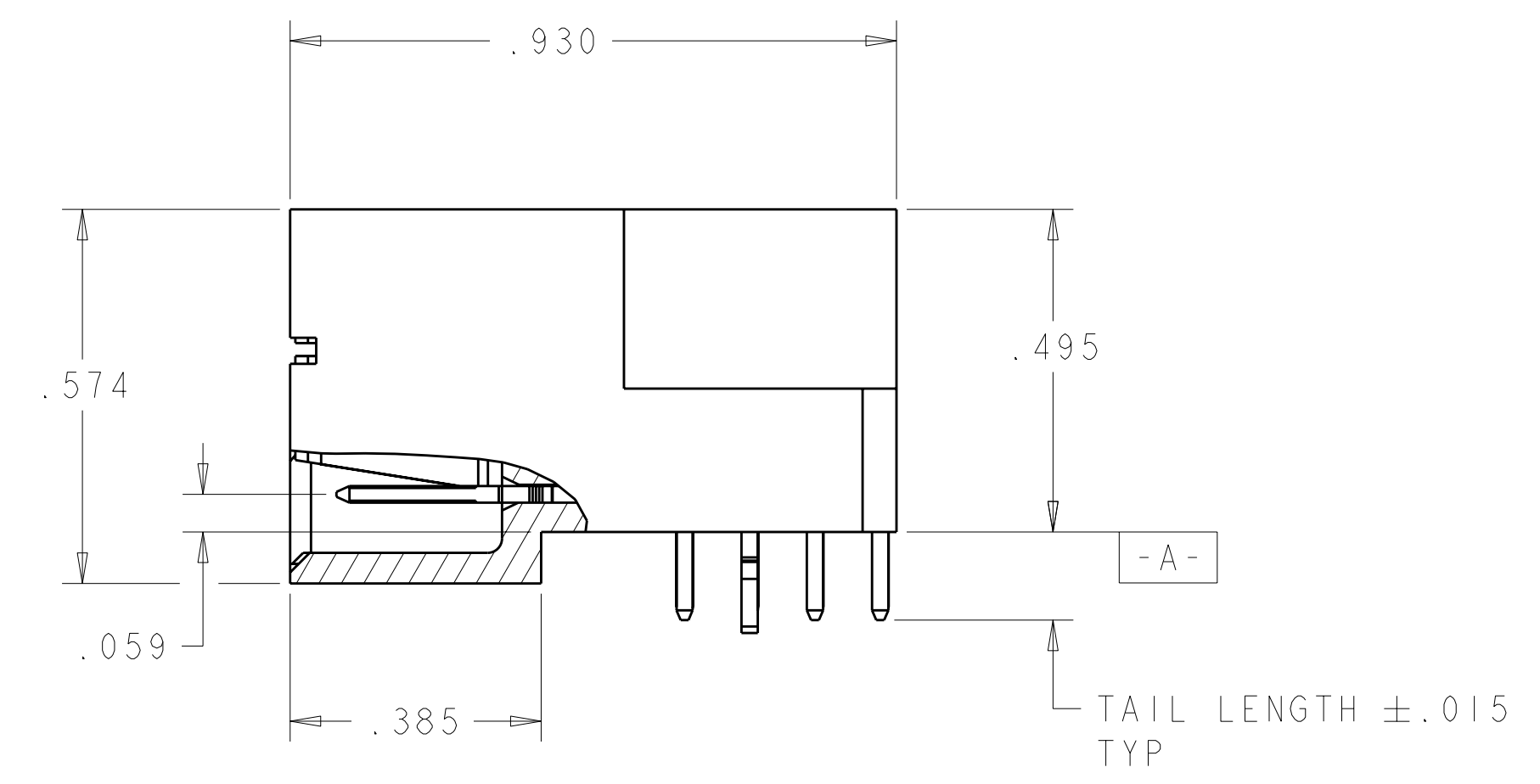
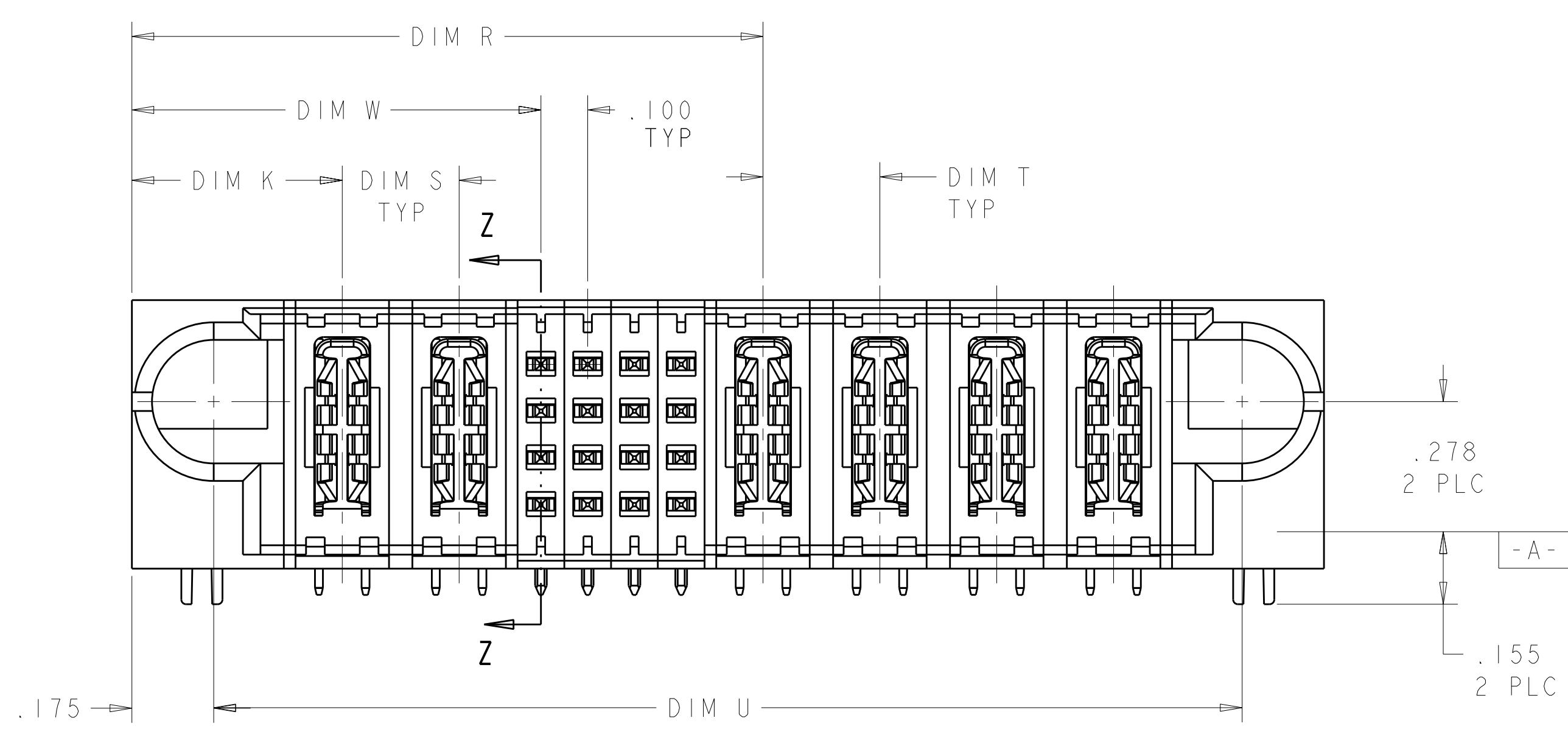


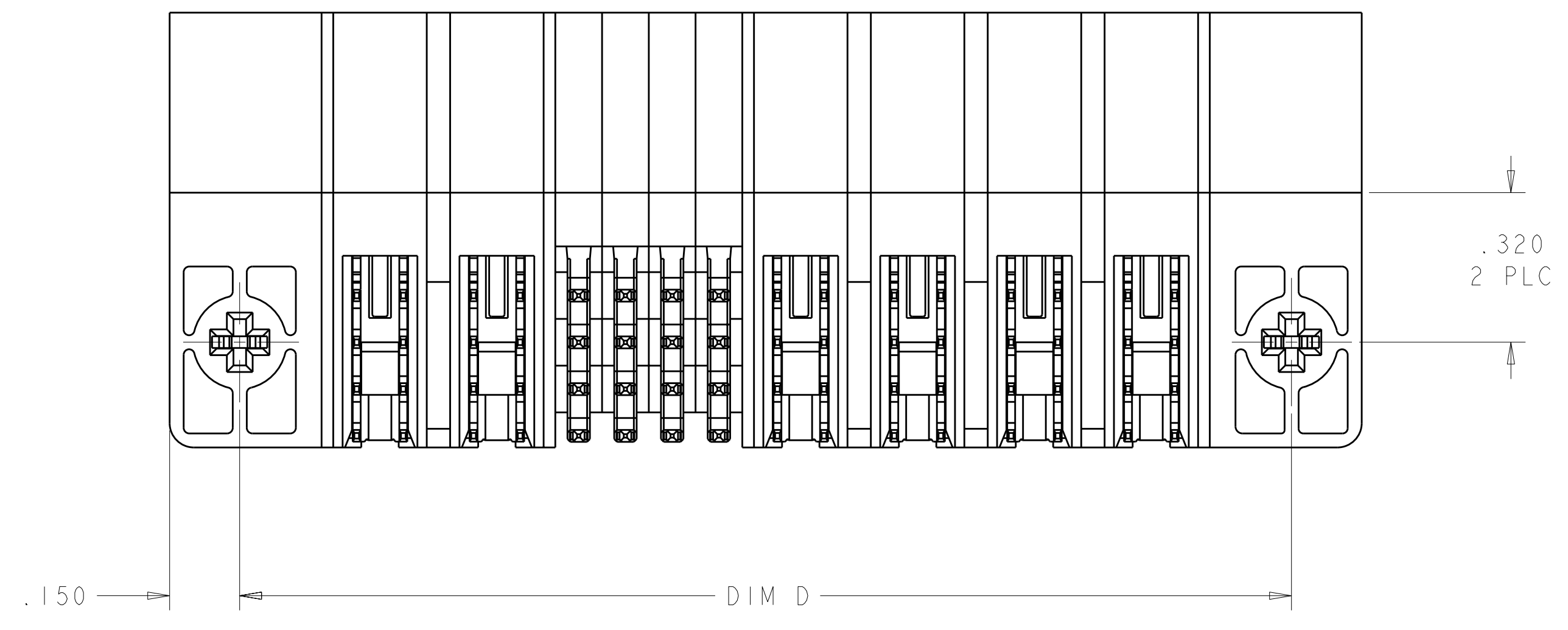
LOC	DIST	REV	DATE	BY	APPD
ES	00				
REVISIONS					
A		REV PER ECR-07-016848	19JUL2007	CZ	SY
B		REV PER ECR-08-011412	06MAY2008	TY	SY
BI		ADDED NEW DASH NUMBER	13JUN2008	VO	SY
C		REV PER ECR-08-015036	08JUL2008	VO	SY



- 1 PART NUMBER, AND DATE CODE MARKED IN AREA SHOWN.
- 2 MATERIAL:
 HOUSING - GLASS FILLED HIGH TEMP THERMO PLASTIC, UL94 V-0
 SIGNAL CONTACT - COPPER ALLOY
 POWER CONTACT - HIGH CONDUCTIVITY COPPER ALLOY
- 3 CONTACT PLATING:
 SIGNAL CONTACTS - .000050 MIN Ni UNDER ALL.
 .000030 MIN Au ON CONTACT AREA.
 .000100 MIN Sn AT PCB INTERFACE.
 POWER CONTACTS - .000050 MIN Ni UNDER ALL.
 .000030 MIN Au ON CONTACT AREA.
 .000100 MIN Sn AT PCB INTERFACE.
- 4 MECHANICAL CONNECTOR KEEP OUT ZONE.
- 5 DATUM AND BASIC DIMENSIONS ESTABLISHED BY CUSTOMER.
- 6 PCB - ALL HOLE DIAMETERS ARE FINISHED HOLE SIZES.
- 7 PCB - .0453±.0010 DRILLED HOLES PLATED WITH .0003 MIN Sn OVER .001 TO .003 Cu PLATING TO ACHIEVE A .040 HOLE.
- 8 NOT RELEASED FOR PRODUCTION.



SECTION Z-Z

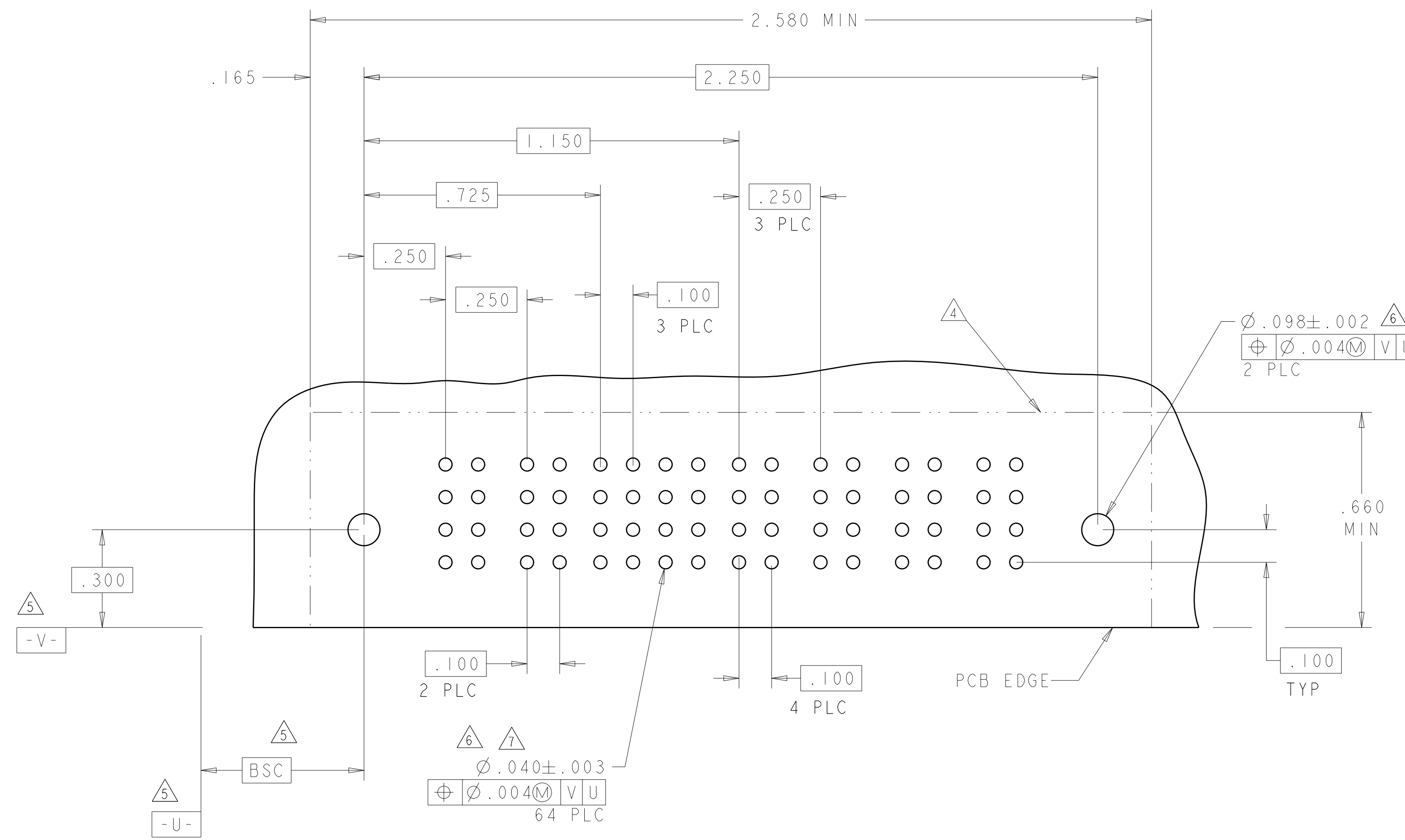


.250	.250	1.550	0.875	2.250	1.900	1.950	.450	2P + 24S + 2P	1888114-4
.250	.250	1.350	.875	2.550	2.200	2.250	.450	2P + 16S + 4P	1888114-3
.250	.250	1.800	1.125	2.500	2.150	2.200	.450	3P + 24S + 2P	1888114-2
.250	.250	1.350	.875	2.550	2.200	2.250	.450	2P + 16S + 4P	1888114-1
DIM S	DIM T	DIM R	DIM W	DIM L	DIM U	DIM D	DIM K	DESCRIPTION	PART NUMBER

DIMENSIONS: INCHES 		TOLERANCES UNLESS OTHERWISE SPECIFIED: 9 PLC ±. 2 PLC ±.01 5 PLC ±.005 4 PLC ±.0020 ANGLES ±.020		DWN C. ZHOU 19JUL2007 CHK C. ZHOU 19JUL2007 APVD S. YAO		Tyco Electronics Corporation Shanghai, P.R.China, 200233	
MATERIAL:		FINISH:		PRODUCT SPEC: 108-1973 APPLICATION SPEC: 114-13038		NAME: RIGHT ANGLE HEADER ASSEMBLY W/GUIDES MULTI-BEAM XL SIZE: CAGE CODE DRAWING NO: A100779C=1888114 WEIGHT: - CUSTOMER DRAWING	
SCALE: 4:1				SHEET 1 OF 5		REV C	

LOC	DIST	REVISIONS			
ES	00	REV	DATE	BY	APPV
-	-	SEE SHEET 1	-	-	-

PART NUMBER	ROWS	POWER		SIGNAL				POWER			
		P1	P2	1	2	3	4	P3	P4	P5	P6
1888114-1	D C B A	PM	PM	J	J	J	J	PM	PM	PM	PM
				K	K	K	K				
				FN	FN	FN	FN				
				S	S	S	S				
2P + 16S + 4P											

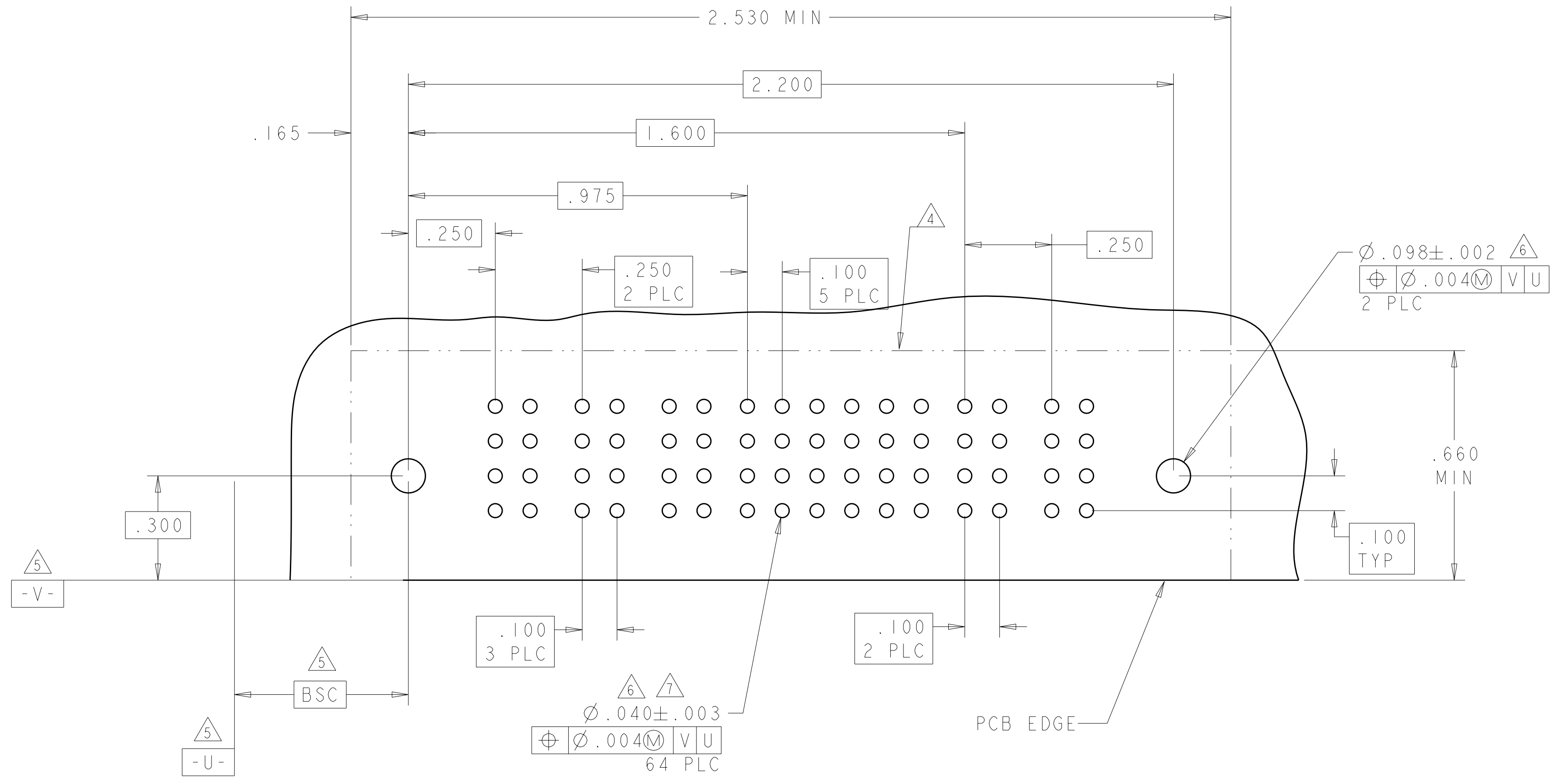


ROW	DESCRIPTION	CODE
D	SIGNAL CONTACT, MFBL .135 TAIL LENGTH	FJ
C	SIGNAL CONTACT, MFBL .135 TAIL LENGTH	FK
B	SIGNAL CONTACT, MFBL .135 TAIL LENGTH	FN
A	SIGNAL CONTACT, MFBL .135 TAIL LENGTH	FS
D	SIGNAL CONTACT, MLBF .135 TAIL LENGTH	E
C	SIGNAL CONTACT, MLBF .135 TAIL LENGTH	F
B	SIGNAL CONTACT, MLBF .135 TAIL LENGTH	G
A	SIGNAL CONTACT, MLBF .135 TAIL LENGTH	H
D	SIGNAL CONTACT, STD .135 TAIL LENGTH	J
C	SIGNAL CONTACT, STD .135 TAIL LENGTH	K
B	SIGNAL CONTACT, STD .135 TAIL LENGTH	N
A	SIGNAL CONTACT, STD .135 TAIL LENGTH	S
-	POWER CONTACT .135 TAIL LENGTH	PM

DIMENSIONS: INCHES		TOLERANCES UNLESS OTHERWISE SPECIFIED:		DWN: C.ZHOU 19JUL2007		CHK: C.ZHOU 19JUL2007		NAME: S.YAO		Tyco Electronics Tyco Electronics incorporation Shanghai, P.R.China.200233	
9 PLC ±.01		5 PLC ±.005		PRODUCT SPEC 108-1973		APPLICATION SPEC 114-13038		SIZE: CAGE CODE: DRAWING NO: A100779C=1888114		RESTRICTED TO: -	
MATERIAL: -		FINISH: -		WEIGHT: -		CUSTOMER DRAWING		SCALE: 4:1		SHEET 2 OF 5 REV C	

LOC	DIST	REVISIONS			
ES	00	REV	DATE	BY	APPD
-	-	SEE SHEET 1	-	-	-

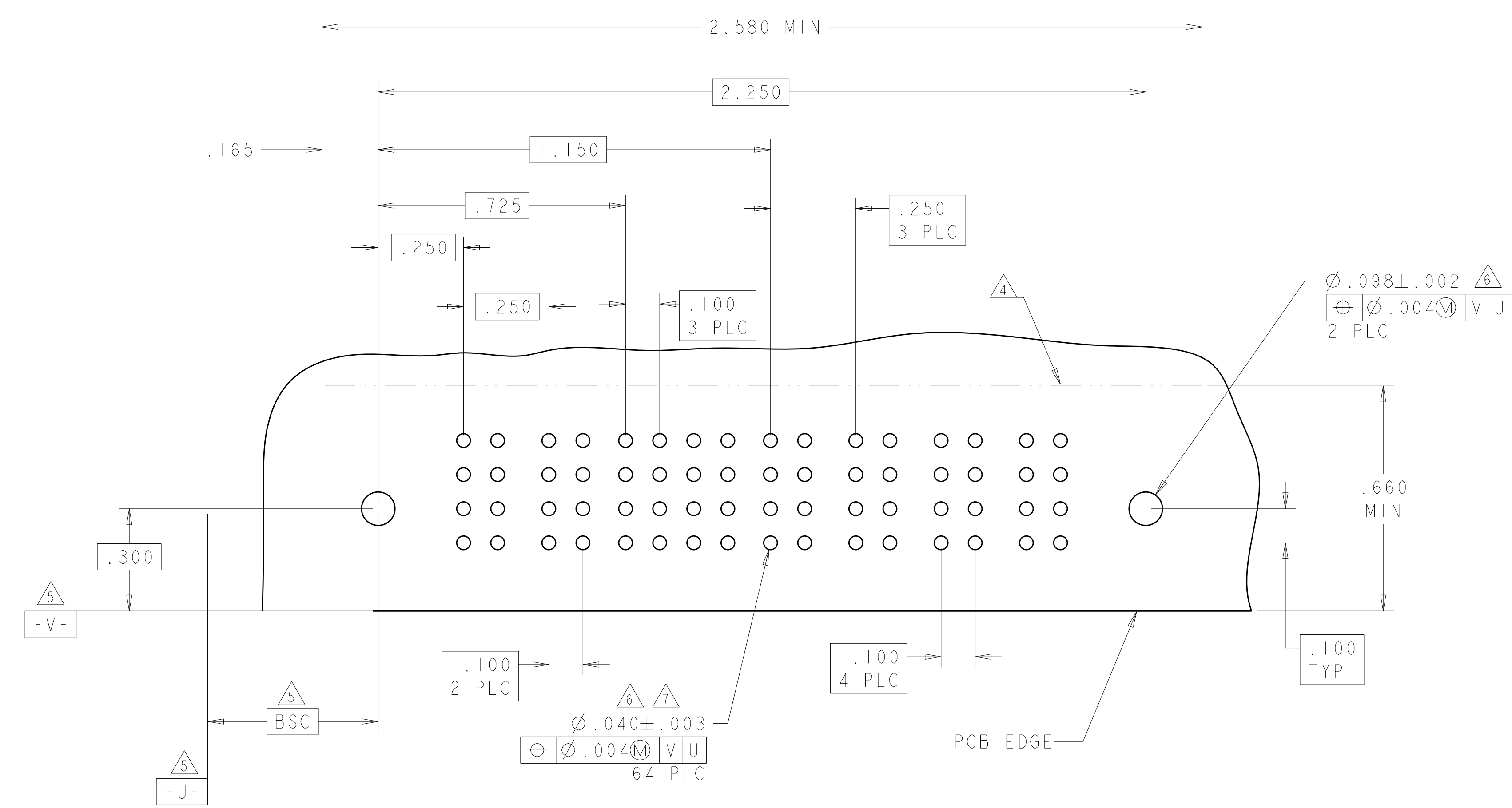
PART NUMBER	ROWS	POWER			SIGNAL						POWER	
		P1	P2	P3	1	2	3	4	5	6	P4	P5
1888114-2	D	PM	PM	PM	J	J	J	J	J	J	PM	PM
	C				K	K	K	K	K			
	B				N	N	N	N	N			
	A				S	S	S	S	S			
3P + 24S + 2P		HD										HD



<small>THIS DRAWING IS UNPUBLISHED. RELEASED FOR PUBLICATION. ALL RIGHTS RESERVED. THIS IS SUBJECT TO CHANGE WITHOUT NOTICE. TOLERANCES UNLESS OTHERWISE SPECIFIED: DIMENSIONS IN INCHES: 0 PLC ±.01, 1 PLC ±.01, 2 PLC ±.01, 3 PLC ±.005, 4 PLC ±.0020, ANGLES ±.2°</small>		DWN: C. ZHOU 19 JUL 2007 CHK: C. ZHOU 19 JUL 2007 APVD: S. YAO	Tyco Electronics Corporation Shanghai, P.R.China. 200233
DIMENSIONS: INCHES 		PRODUCT SPEC: 108-1973 APPLICATION SPEC: 114-13038 WEIGHT: - CUSTOMER DRAWING	NAME: RIGHT ANGLE HEADER ASSEMBLY W/GUIDES MULTI-BEAM XL SIZE: A 00779 C=1888114 SCALE: 4:1 SHEET 3 OF 5 REV C

LOC	DIST	REV	DATE	BY	APPD
ES	00				
REVISIONS			DESCRIPTION	DATE	DWN
			SEE SHEET 1		

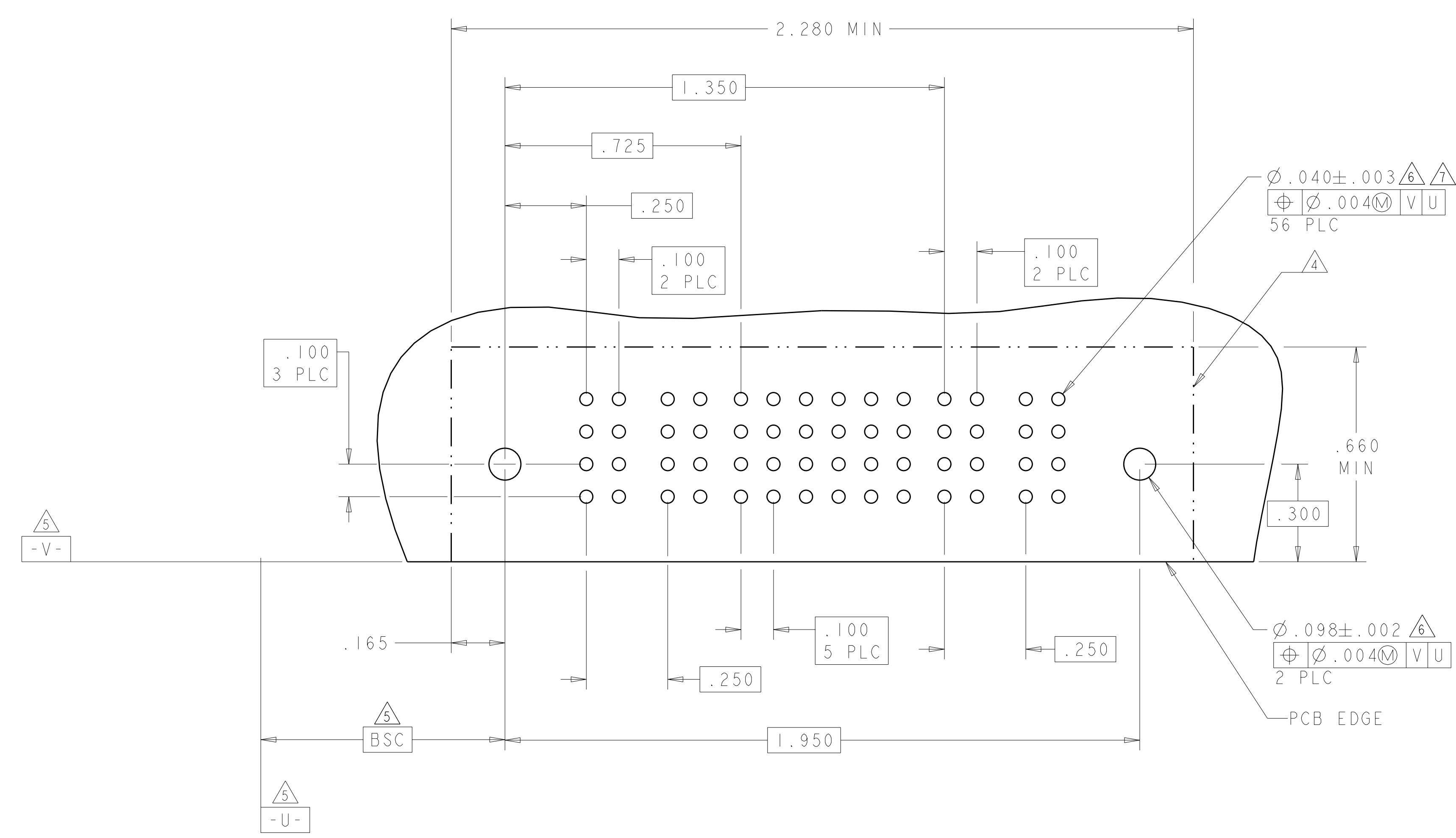
PART NUMBER	ROWS	POWER		SIGNAL				POWER			
		P1	P2	1	2	3	4	P3	P4	P5	P6
1888114-3	D	PM	PM	J	J	J	J	PM	PM	PM	PM
	C			FK	FK	FK	FK				
	B			G	G	G	G				
	A			S	S	S	S				
2P + 16S + 4P		HD	HD					HD	HD		



DIMENSIONS:		TOLERANCES UNLESS OTHERWISE SPECIFIED:		DWN		NAME	
INCHES		0 PLC	±	C. ZHOU	19 JUL 2007	Tyco Electronics Corporation	
		1 PLC	±.01	C. ZHOU	19 JUL 2007	Shanghai, P.R.China, 200233	
		2 PLC	±.05	APVD		S. YAO	
		3 PLC	±.005	PRODUCT SPEC		RIGHT ANGLE HEADER ASSEMBLY	
		4 PLC	±.0020	APPLICATION SPEC		W/GUIDES	
		ANGLES	±.0020	114-13038		MULTI-BEAM XL	
MATERIAL		FINISH		WEIGHT		RESTRICTED TO	
				CUSTOMER DRAWING		A100779C-1888114	
				SCALE		SHEET	
				4:1		4 OF 5	
						REV C	

LOC	DIST	REVISIONS			
ES	00	REV	DATE	BY	APPD
		-	SEE SHEET 1	-	-

PART NUMBER	ROWS	POWER		SIGNAL						POWER	
		P1	P2	1	2	3	4	5	6	P3	P4
1888114-4	D	PM	PM	F	J	J	J	J	J	PM	PM
	C			F	K	K	K	K	K		
	B			N	N	N	N	N	FN		
	A			S	S	H	S	S	FS		
2P + 24S + 2P											



DIMENSIONS: INCHES		TOLERANCES UNLESS OTHERWISE SPECIFIED: 9 PLC ±. 1 PLC ±.01 2 PLC ±.01 3 PLC ±.005 4 PLC ±.0020 ANGLES ±2° FINISH		DWN C. ZHOU 19 JUL 2007 CHK C. ZHOU 19 JUL 2007 APVD S. YAO		Tyco Electronics Tyco Electronics incorporation Shanghai, P.R.China. 200233	
MATERIAL: - FINISH: -		WEIGHT: -		PRODUCT SPEC: 108-1973 APPLICATION SPEC: 114-13038		NAME: RIGHT ANGLE HEADER ASSEMBLY W/GUIDES MULTI-BEAM XL SIZE: A100779 C=1888114	
CUSTOMER DRAWING				SCALE: 4:1		SHEET 5 OF 5 REV C	

单击下面可查看定价，库存，交付和生命周期等信息

[>>TE Connectivity\(泰科\)](#)