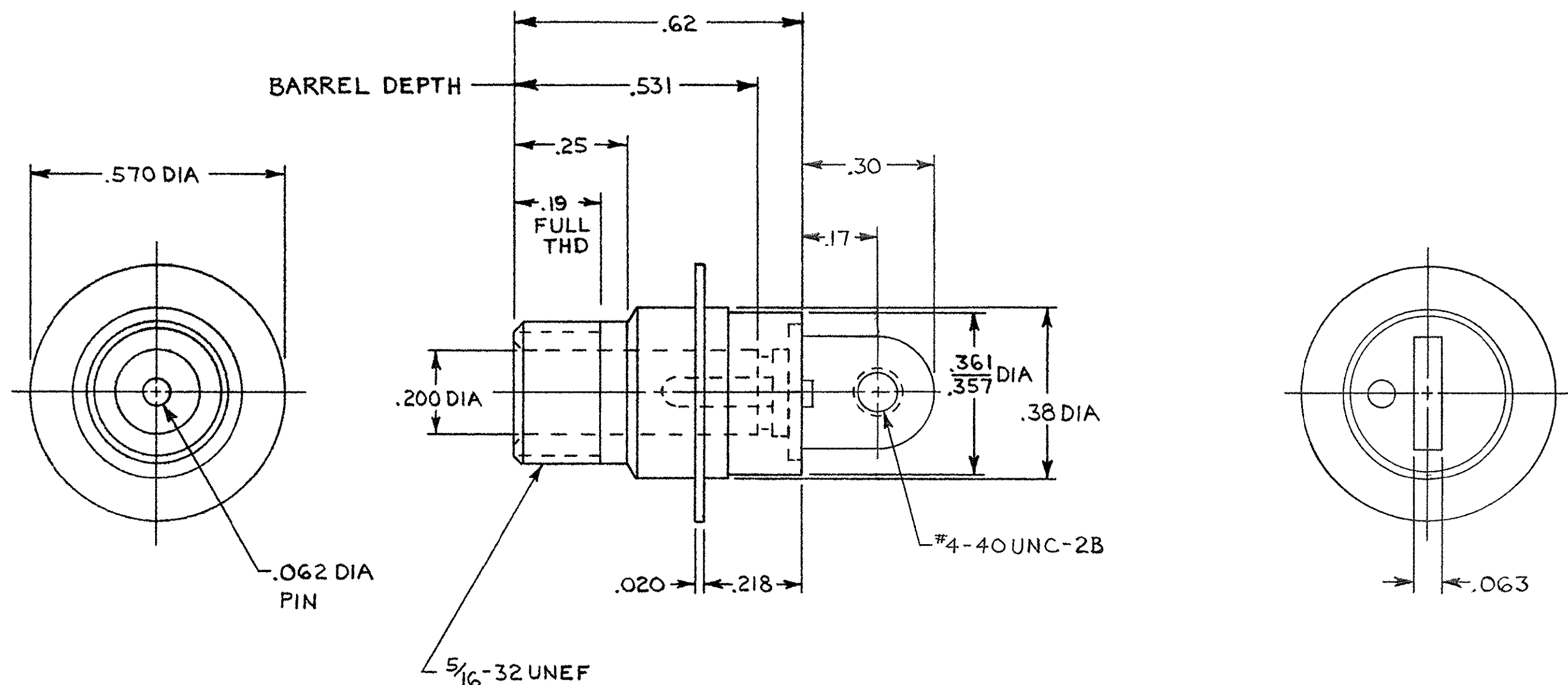


THIS DRAWING IS UNPUBLISHED. RELEASED FOR PUBLICATION
 © COPYRIGHT 19 BY AMP INCORPORATED, HARRISBURG, PA. ALL INTERNATIONAL RIGHTS RESERVED. AMP PRODUCTS MAY BE COVERED BY U.S. AND FOREIGN PATENTS AND/OR PATENTS PENDING.

REVISIONS						
P	F	ZONE	LTR	DESCRIPTION	DATE	APPROVED
✓	✓		O	RELEASE. NPR1638.	RPH 1-21-86	M.A.
			A	REV PER OH14-0192-05	1-06	PY



1. THIS RECEPTACLE IS HERMETICALLY SEALED.
2. SCREW THREAD MEASUREMENT IN ACCORDANCE WITH H28 HANDBOOK. (3 WIRE METHOD). USING WIRE .01804 DIA MEASUREMENT OVER WIRE SHALL BE .318/.307.
3. MARK PER MIL-STD-130.

TIN PLATED PIN AND FLANGE	5-868632-1
TIN-LEAD PLATED PIN AND FLANGE	868632-1

		DESCRIPTION	PART NO
UNLESS OTHERWISE SPECIFIED DIMENSIONS ARE IN INCHES. TOLERANCES ON: DECIMALS XX±.01 XXX±.005	CONTRACT NO	AMP AMP INCORPORATED Harrisburg, Pa. 17105	
	DR <i>R.G. Napier</i> 8-28-85		
MATERIAL MOLDED GLASS EPOXY	CHK	NAME FLANGED RECEPTACLE, LGH-1/2	
	APPD <i>M. Gardner</i> 1-21-86 APPD	SIZE C	FSCM NO 00779
FINISH	DSGN APPD	DRAWING NO 868632	
	OTHER APPD	SCALE NTS	SHEET

单击下面可查看定价，库存，交付和生命周期等信息

[>>TE Connectivity\(泰科\)](#)