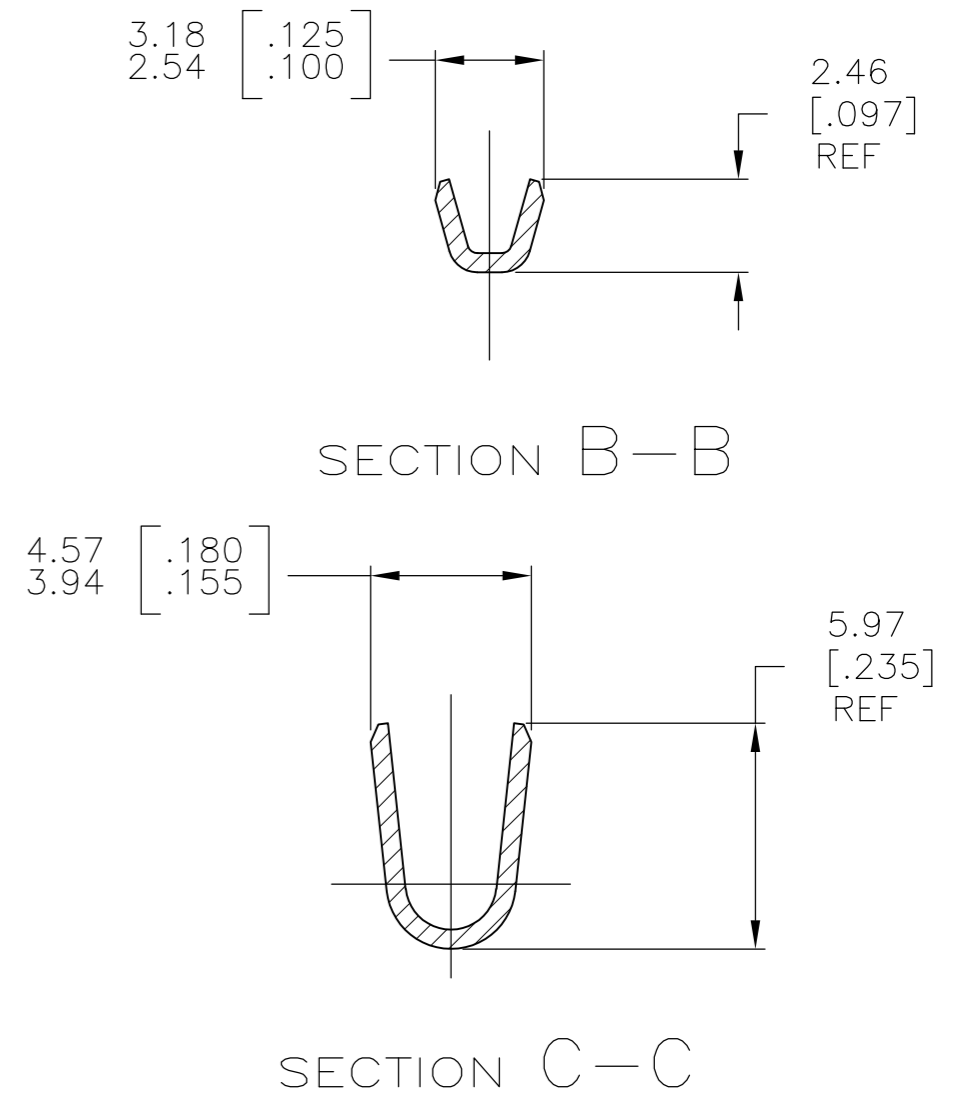
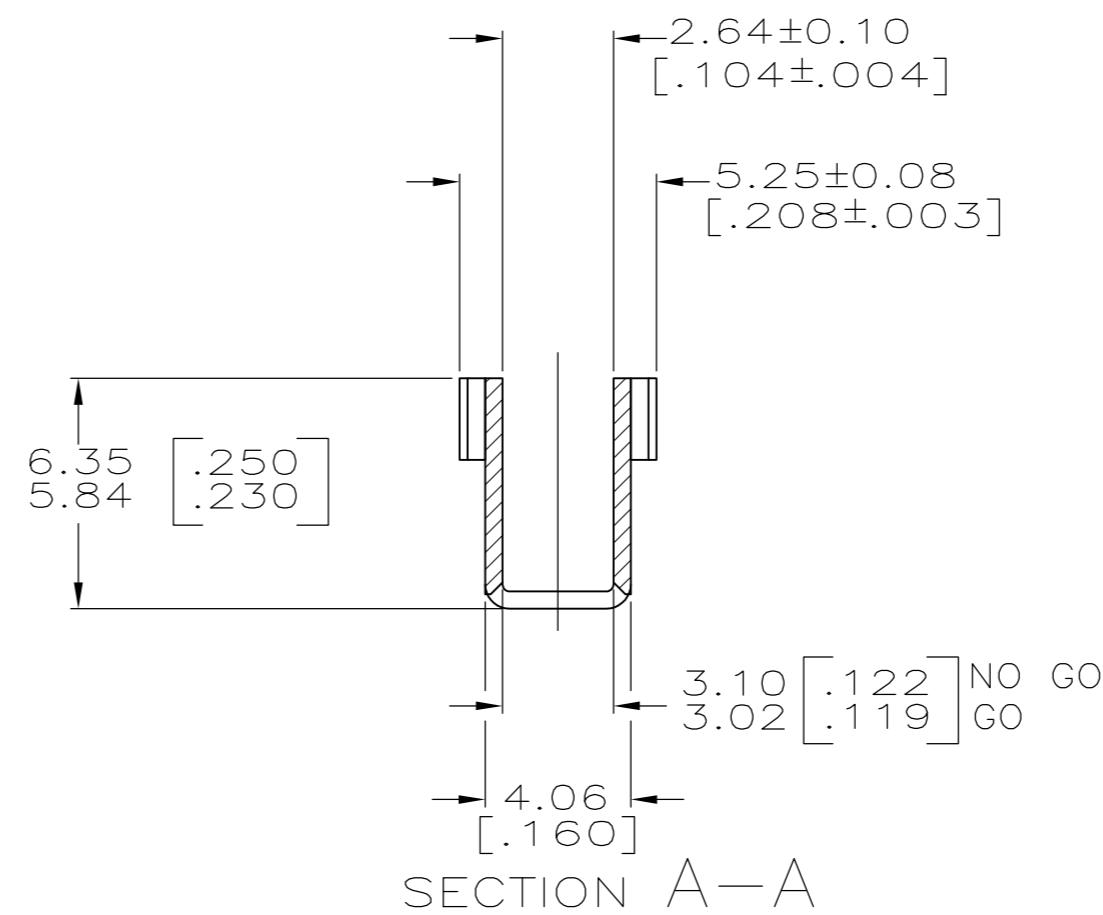
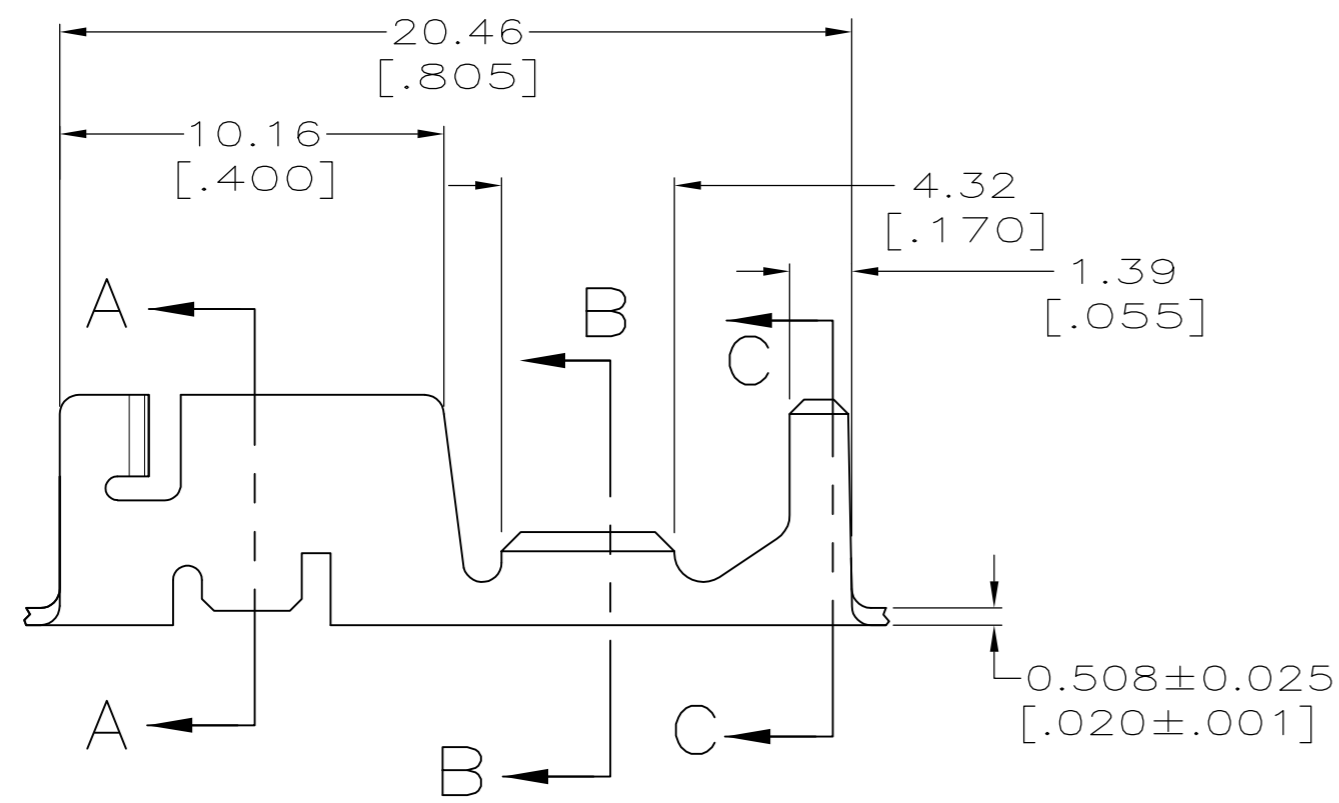
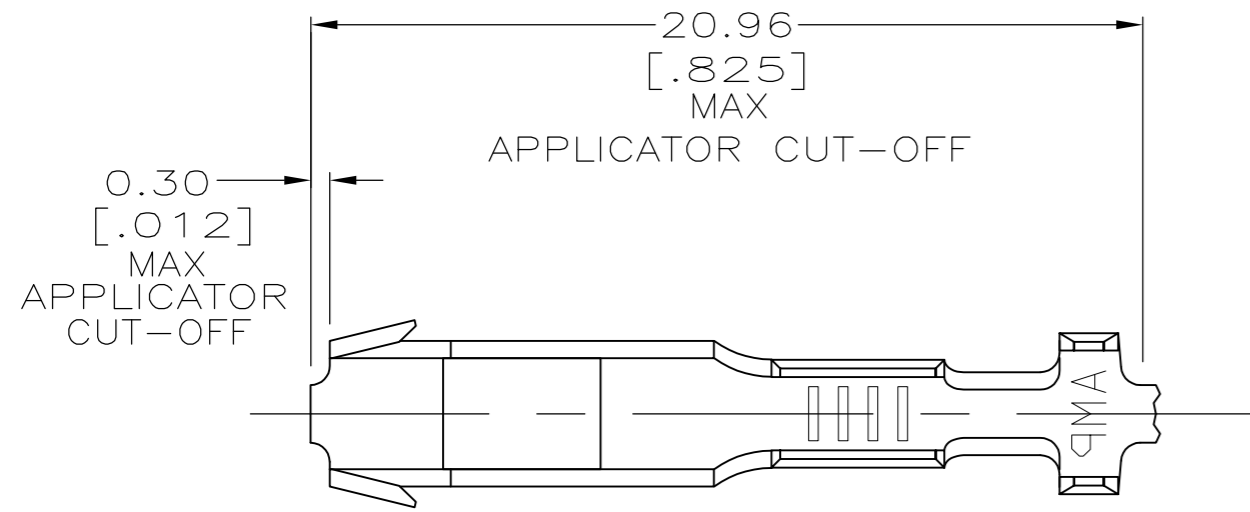


THIS DRAWING IS UNPUBLISHED. RELEASED FOR PUBLICATION  
 © COPYRIGHT - By - ALL RIGHTS RESERVED.

LOC	DIST	REVISIONS					
		P	LTR	DESCRIPTION	DATE	DWN	APVD
AF	50	B		REVISED PER ECR-12-016352	16NOV12	KH	GJ

- 1 CONTINUOUS STRIP ON REELS WITH TERMINALS LOCATED ON 22.61 [.890] CENTERS.
- 2 WIRE RANGE: 0.32-0.82mm<sup>2</sup> [#22-#18] AWG, OR (2) 0.32mm<sup>2</sup> [#22] AWG.
- 3 INSULATION RANGE: 2.79 [.110] MAX DIA OR (2) 2.29 [.090] MAX DIA.
- 4 CONNECTING 2 X 0.32mm<sup>2</sup> [#22 AWG] REQUIRES THE WIRES TO BE PLACED VERTICALLY IN THE CRIMP BARRELS.



WIRE SIZE	HEIGHT ±0.051 [±.002]	WIDTH	TYPE	STRIP LENGTH ±0.38 [±.015]	WIDTH	TYPE
0.75mm <sup>2</sup> [#18 AWG]	1.52 [.060]	2.29 [.090]	F	6.22 [.245]	3.56 [.140]	F OR O
2 X 0.32mm <sup>2</sup> [2X#22 AWG]	1.47 [.058]					
0.50mm <sup>2</sup> [#20 AWG]	1.42 [.056]					
0.32mm <sup>2</sup> [#22 AWG]	1.35 [.053]					
		WIRE BARREL CRIMP			INSULATION BARREL CRIMP	

POST TIN	H03 TIN-BRASS	1742657-1
FINISH	MATERIAL	PART NUMBER
THIS DRAWING IS A CONTROLLED DOCUMENT. DIMENSIONS: mm [INCHES] TOLERANCES UNLESS OTHERWISE SPECIFIED: 0 PLC ± - 1 PLC ± - 2 PLC ± 0.25 [.010] 3 PLC ± - 4 PLC ± - ANGLES ± - FINISH SEE TABLE		DWN M.S. FEHER 16NOV2007 CHK G.D. PORTA 16NOV2007 APVD G.D. PORTA 16NOV2007 PRODUCT SPEC 108-2008 APPLICATION SPEC 114-2019 WEIGHT - CUSTOMER DRAWING
NAME RECEPTACLE, CLUSTER PIN, 3.18 [.125] DIA SIZE A2 CAGE CODE 00779 DRAWING NO C=1742657 SCALE 5:1 SHEET 1 of 1 REV B		TE Connectivity RESTRICTED TO -

单击下面可查看定价，库存，交付和生命周期等信息

[>>TE Connectivity\(泰科\)](#)