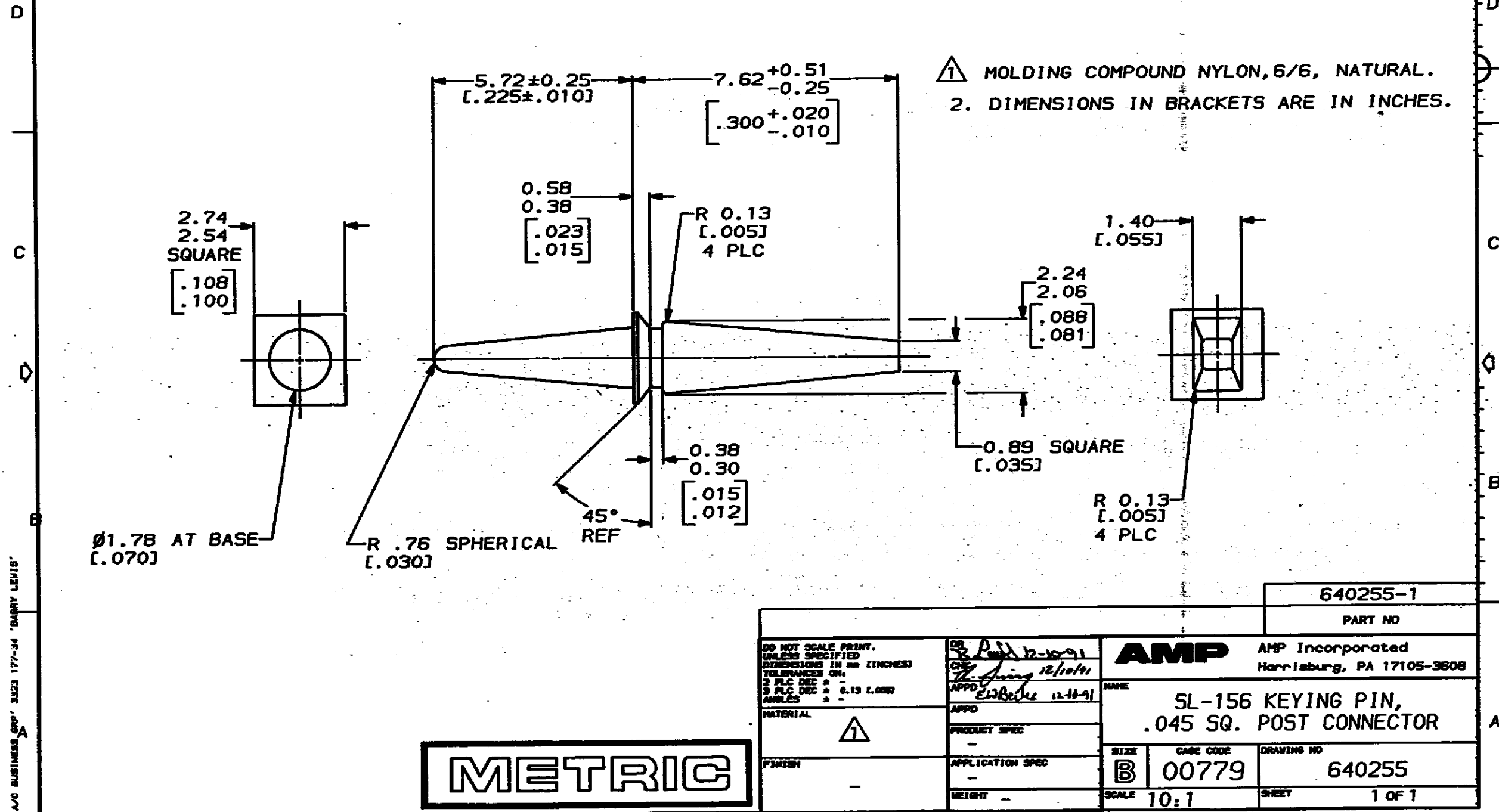


DRAWING MADE IN THIRD ANGLE PROJECTION

THIS DRAWING IS UNPUBLISHED. RELEASED FOR PUBLICATION  
© COPYRIGHT 19 BY AMP INCORPORATED. ALL INTERNATIONAL RIGHTS RESERVED.

LOC	DIST	ZONE	LTR	REVISIONS	DATE	APPD
CM	54			E REV AND REDWN PER ECN CM-11	12-4-91	EL RS



AMP BUSINESS GRP' 3523 177-34 'BARRY LEVIS'

AMP 140-18 REV 11-88

2D

**METRIC**

DO NOT SCALE PRINT. UNLESS SPECIFIED DIMENSIONS IN INCHES TOLERANCES ON: 2 PLC DEC * - 3 PLC DEC * 0.13 L.000 ANGLES * -		AMP Incorporated Harrisburg, PA 17105-3808	
MATERIAL $\triangle$		NAME SL-156 KEYING PIN, .045 SQ. POST CONNECTOR	
FINISH -		SIZE <b>B</b>	CAGE CODE 00779
WEIGHT -		DRAWING NO 640255	
		SCALE 10:1	SHEET 1 OF 1

CUSTOMER DRAWING

单击下面可查看定价，库存，交付和生命周期等信息

[>>TE Connectivity\(泰科\)](#)