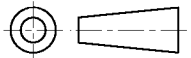


DO NOT SCALE  
DIMENSIONS IN mm

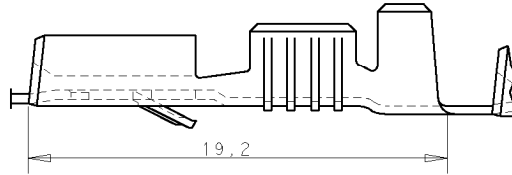
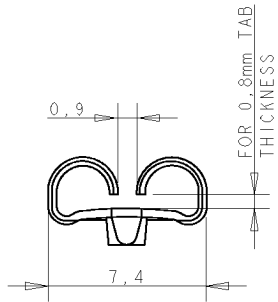
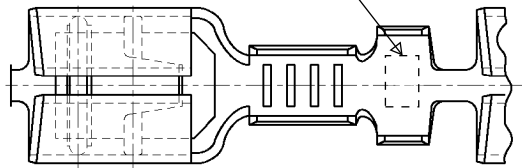
METRIC

THIRD ANGLE  
PROJECTION



LTR.	REVISION RECORD	DR.	CHK.	DATE
C3	REVISED PER ECR-21-100855	AA	BH	14APR2021

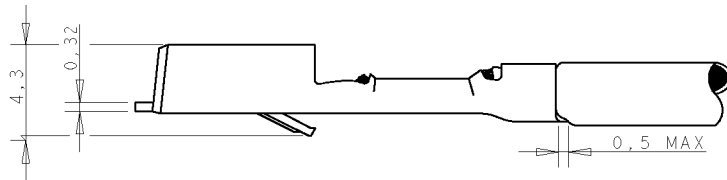
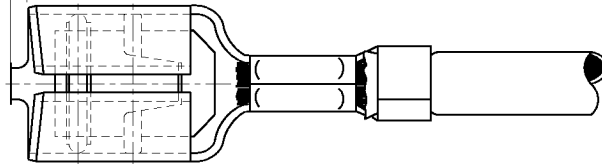
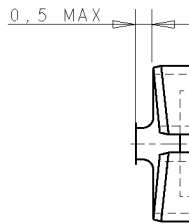
TRADEMARK



1 FOR USE ON MINIATURE APPLICATORS ( LEFT-RIGHT FEED ) AND STANDARD APPLICATORS ( RIGHT-LEFT FEED ).

2. REELED WITH PAPER AND PAPER COVER.

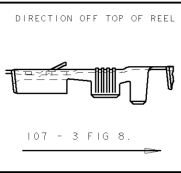
3 OBSOLETE PARTS: OBSOLETE CIS STREAMLINING PER D.RENAUD/D.SINISI



GENERAL TOLERANCES  $\pm 0.3$

3	OBSOLETE	NOTES	FINISH	MATERIAL	PARTNUMBER
			PRE-TINPLATED	PH.BRONZE	<del>6-160927-6</del>
			PRE-TINPLATED	BRASS	<del>6-160927-7</del>
			TINPLATED	PH.BRONZE	160927-4
			UNPLATED	PH.BRONZE	160927-3
			TINPLATED	BRASS	160927-2
			UNPLATED	BRASS	160927-1

CUSTOMER DRAWING		TE Connectivity	
FOR REFERENCE ONLY WILL NOT BE UPDATED		THIS DRAWING IS UNPUBLISHED RELEASED FOR PUBLICATION Jan .1988	
DR. R.v.Lokven	DATE 26.01.88	WIRE RANGE >1,0-2,5 mm <sup>2</sup>	NAME .250 SRS FAST-IN-ON RECEPTACLE.
CHK. A.B.	DATE 02.02.88	INSUL. RANGE 2,1-3,1 DIA	REV. DATE D M Y 14 4 21
APP. L.v.Soest	DATE 03.02.88	SIZE A3	SHEET 1 OF 1
		DWG. No. 160927	REV. LTR. C3



8 | 7 | 6 | 5 | 4 | 3 | 2 | 1

单击下面可查看定价，库存，交付和生命周期等信息

[>>TE Connectivity\(泰科\)](#)