

THIS DRAWING IS UNPUBLISHED.

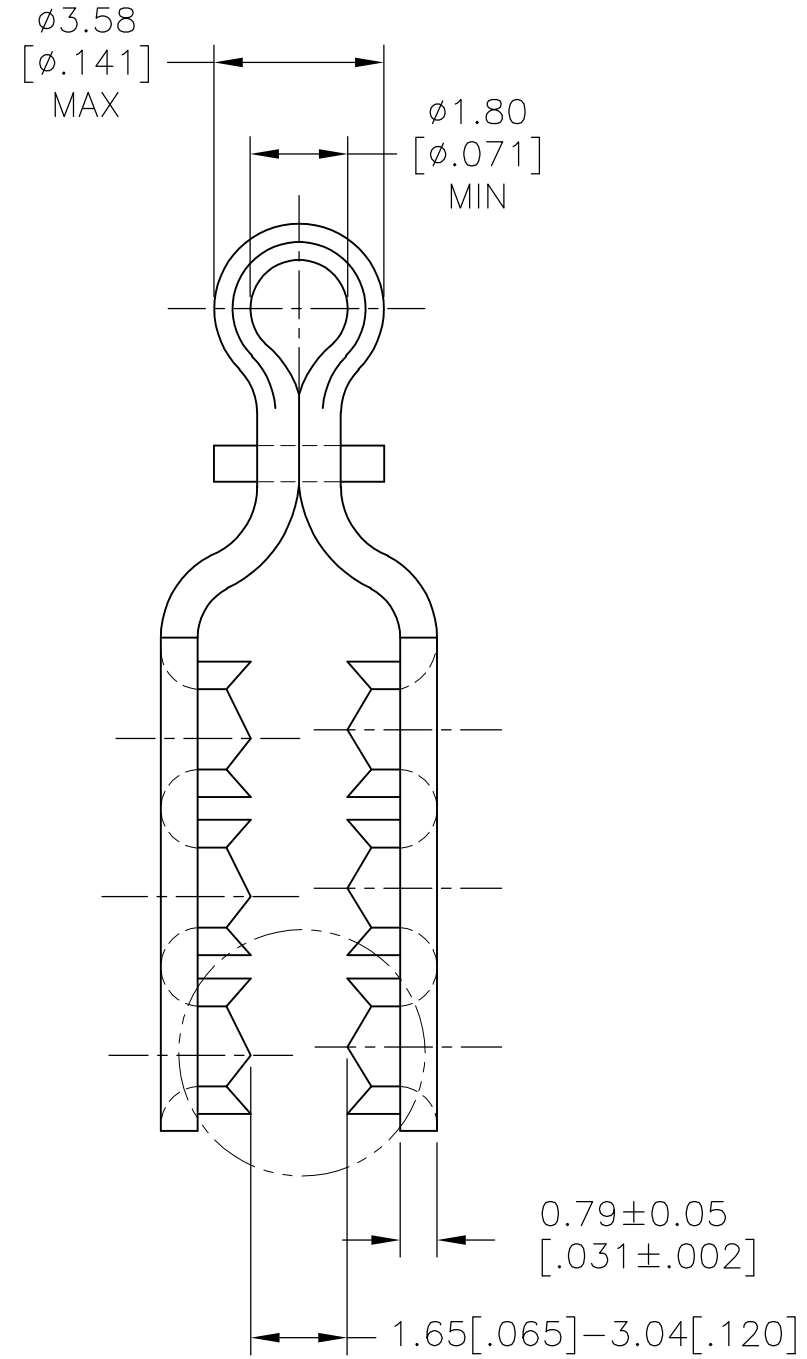
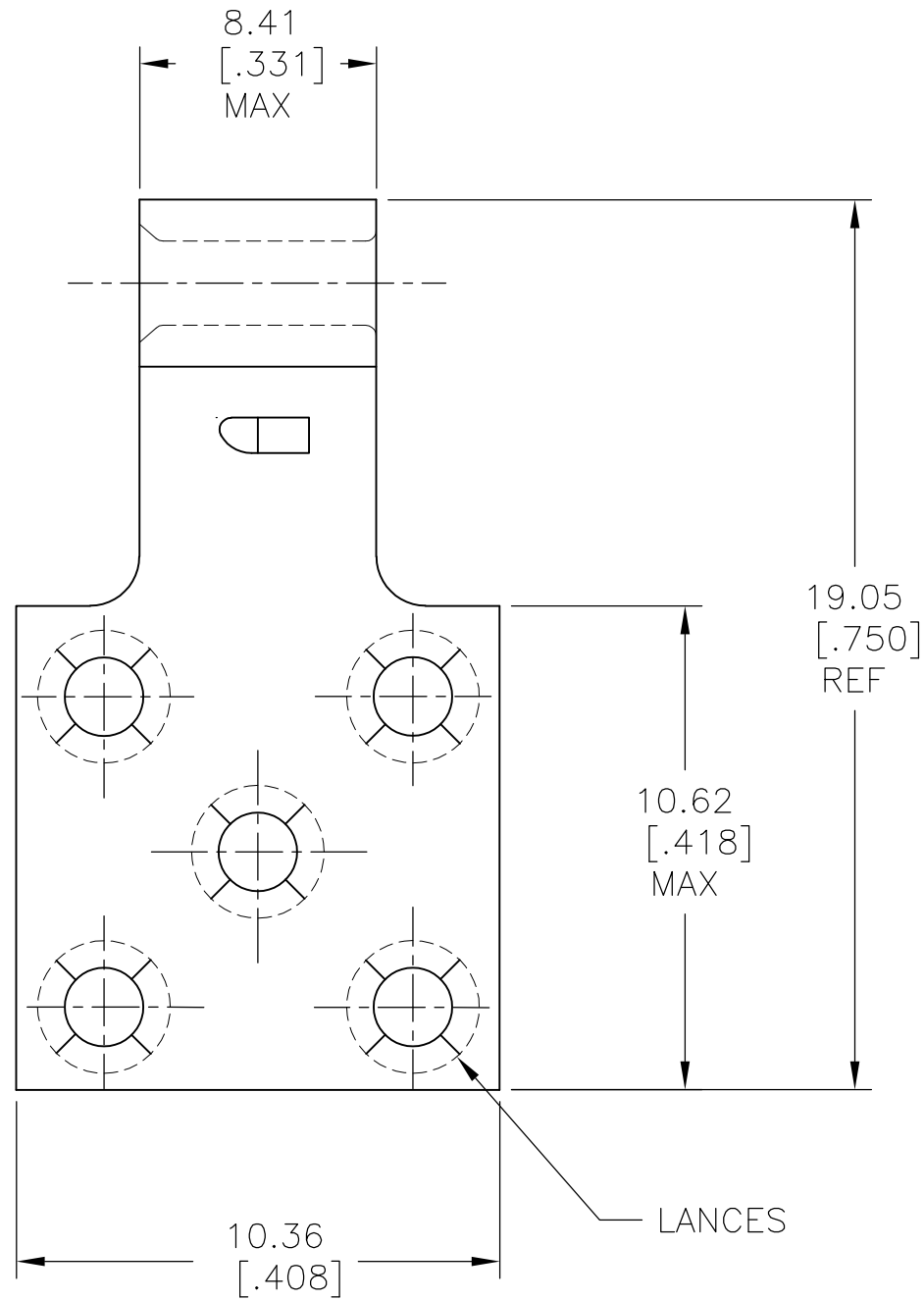
RELEASED FOR PUBLICATION

ALL RIGHTS RESERVED.

© COPYRIGHT - By -

REVISIONS

P	LTR	DESCRIPTION	DATE	DWN	APVD
	E1	REDRAWN PER ECO-16-008891	17JUN2016	NK	DR



THIS DRAWING IS A CONTROLLED DOCUMENT.		DWN NAGALAKSHMI K 18JUN2016	<b>STE</b> TE Connectivity			
DIMENSIONS: mm [INCHES]		CHK ROHDE DANIEL F 18JUN2016				
TOLERANCES UNLESS OTHERWISE SPECIFIED:		APVD ROHDE DANIEL F 18JUN2016	NAME			
<ul style="list-style-type: none"> <li>0 PLC ± -</li> <li>1 PLC ± -</li> <li>2 PLC ± -</li> <li>3 PLC ± 0.20 [.008]</li> <li>4 PLC ± -</li> <li>ANGLES ± 5°</li> </ul>		PRODUCT SPEC	TERMI-FOIL, DOUBLE FACE TAP W/BARREL WIRE SIZE:22-16			
MATERIAL		APPLICATION SPEC	SIZE	CAGE CODE	DRAWING NO	RESTRICTED TO
COPPER (QQ-C-576) TIN PLATE (MIL-T-10727)		FINISH	A3	00779	C-52584	-
CUSTOMER DRAWING			SCALE	SHEET	REV	
			3:1	1 OF 1	E1	

单击下面可查看定价，库存，交付和生命周期等信息

[>>TE Connectivity\(泰科\)](#)