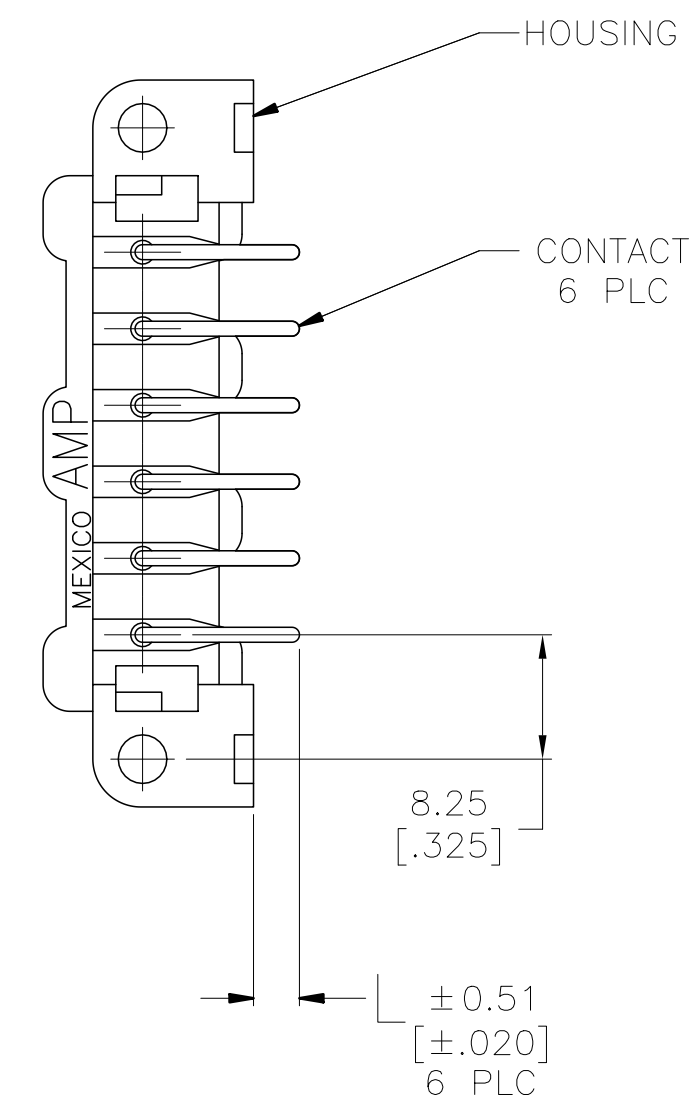
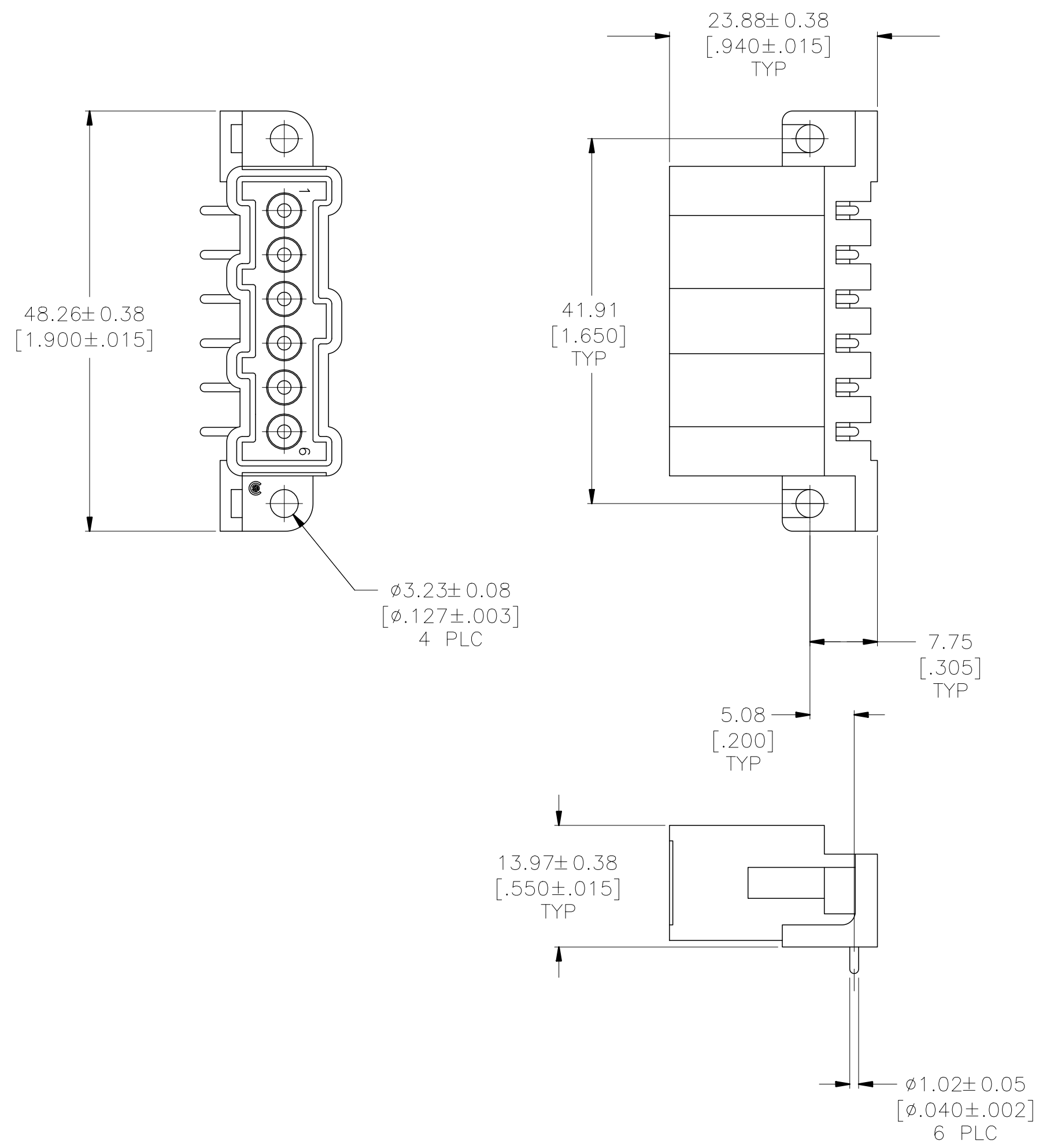


THIS DRAWING IS UNPUBLISHED. RELEASED FOR PUBLICATION
 © COPYRIGHT - TE Connectivity ALL RIGHTS RESERVED.

REVISIONS					
P	LTR	DESCRIPTION	DATE	DWN	APVD
K		REVISED PER ECO-20-001083	30JAN2020	SM	MZ
G1		REVISED PER ECO-09-021826	12JAN10	KK	AEG
H		REVISED PER ECO-17-011181	03AUG2017	RS	MZ
J		REVISED PER ECO-18-000443	30JAN2018	RS	MZ



- ① HOUSING MATERIAL: PA66, BLACK, UL 94 V-0 RATED.
- ② BRASS PER ASTM B36.
- ③ 3.81µm [.000150] MIN TIN-LEAD OVER 2.54µm [.000100] MIN COPPER.
- ④ 3.81µm [.000150] MIN TIN OVER 2.54µm [.000100] MIN COPPER.
- ⑤ OBSOLETE PARTS: OBSOLETE CIS STREAMLINING PER D.RENAUD/D.SINISI

⑤	OBSOLETE	④	12.83 [.505]	-208116-5-
		④	3.05 [.120]	208116-4
	OBSOLETE	③	12.83 [.505]	208116-3
	OBSOLETE	③	3.05 [.120]	208116-1
		CONTACT FINISH	L	PART NUMBER

THIS DRAWING IS A CONTROLLED DOCUMENT. DWN J.MCCLINTON 11/06/91
 CHK R. STONE 11-8-91

STE TE Connectivity

NAME: HEADER ASSEMBLY, PIN, 6 POSITION, METRIMATE

DIMENSIONS:	TOLERANCES UNLESS OTHERWISE SPECIFIED:	APVD	PRODUCT SPEC	APPLICATION SPEC	SIZE	CAGE CODE	DRAWING NO	RESTRICTED TO
mm [INCHES]	0 PLC ± - 1 PLC ± - 2 PLC ± 0.25 [.010] 3 PLC ± - 4 PLC ± - ANGLES ± -	-	-	-	A2	00779	C=208116	-
MATERIAL:	FINISH:	WEIGHT	CUSTOMER DRAWING		SCALE	SHEET	REV	
HOUSING: ①	CONTACTS: SEE TABLE	-			2:1	1 of 1	K	

单击下面可查看定价，库存，交付和生命周期等信息

[>>TE Connectivity\(泰科\)](#)